

TICKET	BCO-1901-0169
DATE	1/31/2019
CREW INFORMATION	
SUPERVISOR	Jeff Kopp
PUMP UNIT	445046
NUMBERS	
ARRIVAL (D&T)	1/31/19 9:20 AM
DEPARTURE (D&T)	1/31/19 3:30 PM

[illegible][illegible]

Customer Name Printed \_\_\_\_\_

Customer Signature \_\_\_\_\_

Date Signed \_\_\_\_\_

# Job Summary

Ticket Number	Ticket Date
TN# <b>BCO-1901-0169</b>	<b>1/31/2019</b>

COUNTY	COMPANY	API Number
<b>Weld</b>	<b>PDC ENERGY</b>	<b>05-123-20712</b>
WELL NAME	RIG	JOB TYPE
<b>State Peterson 42-16</b>	<b>Brigade 7</b>	<b>Plug to Abandon</b>
SURFACE WELL LOCATION	CJES Field Supervisor	CUSTOMER REP
<b>40.401766 -104.434341</b>	<b>Jeff Kopp</b>	<b>Ryan Beam</b>

EMPLOYEES
<i>Chad B</i>
<i>Austin H</i>

<b>WELL PROFILE</b>			
Max Treating Pressure (psi):	1500	Bottom Hole Static Temperature (°F):	
Bottom Hole Circulating Temperature (°F):		Well Type:	

## Open Hole

1	Size (in)	TMD From (ft)	TMD to (ft)	TVD From (Ft)	TVD to (Ft)
	10	1700	612		
2	Size (in)	TMD From (ft)	TMD to (ft)	TVD From (Ft)	TVD to (Ft)
	14	612	412		

## Casing/Tubing/Drill Pipe

Type	Size (in)	Weight (lb/ft)	Grade	TMD From (ft)	TMD to (ft)	TVD From (Ft)	TVD to (Ft)
Production	4 1/2	10.5		1815	1700		
Type	Size (in)	Weight (lb/ft)	Grade	TMD From (ft)	TMD to (ft)	TVD From (Ft)	TVD to (Ft)
Tubing	2 3/8	4.7		1815	0	612	0
Type	Size (in)	Weight (lb/ft)	Grade	TMD From (ft)	TMD to (ft)	TVD From (Ft)	TVD to (Ft)

## CEMENT DATA

**Stage 1:** From Depth (ft): **1815** To Depth (ft): **1378**  
 Type: **Balance Plug**  
 Volume (sacks): **140** Volume (bbls): **33.1**

Cement & Additives:	Density (ppg)	Yield (ft³/sk)	Water Req.
	14.8	1.33	6.32

**Stage 2:** From Depth (ft): **612** To Depth (ft): **0**  
 Type: **Surface Plug**  
 Volume (sacks): **202** Volume (bbls): **48**

Cement & Additives:	Density (ppg)	Yield (ft³/sk)	Water Req.
	14.8	1.33	6.32

**Stage 3:** From Depth (ft): **31** To Depth (ft): **0**  
 Type: **Top Off**  
 Volume (sacks): **9** Volume (bbls): **2**

Cement & Additives:	Density (ppg)	Yield (ft³/sk)	Water Req.
	14.8	1.33	6.32

**Stage 4:** From Depth (ft):  To Depth (ft):   
 Type:   
 Volume (sacks):  Volume (bbls):

Cement & Additives:	Density (ppg)	Yield (ft³/sk)	Water Req.

## SUMMARY

	Stage 1	Stage 2
Preflushes:		
<input type="text"/> bbls of <b>Fresh Water</b>	<b>3</b>	
<input type="text"/> bbls of <b>Fresh Water</b>	<b>3</b>	
<input type="text"/> bbls of <b>Fresh Water</b>		
Total Preflush/Spacer Volume (bbl):	<b>6</b>	
Total Slurry Volume (bbl):	<b>83</b>	
Total Fluid Pumped	<b>89</b>	
Returns to Surface:	<b>Cement</b>	<b>2 bbls</b>

Calculated Displacement (bbl): **5.3**  
 Actual Displacement (bbl): **3.5**

Plug Bump (Y/N): **N/A** Bump Pressure (psi): **N/A**  
 Lost Returns (Y/N): **N** (if Y, when )

Job Notes (fluids pumped / procedures / tools / etc.):

Job pumped per customers request. Job went well.

Customer Representative Signature: \_\_\_\_\_

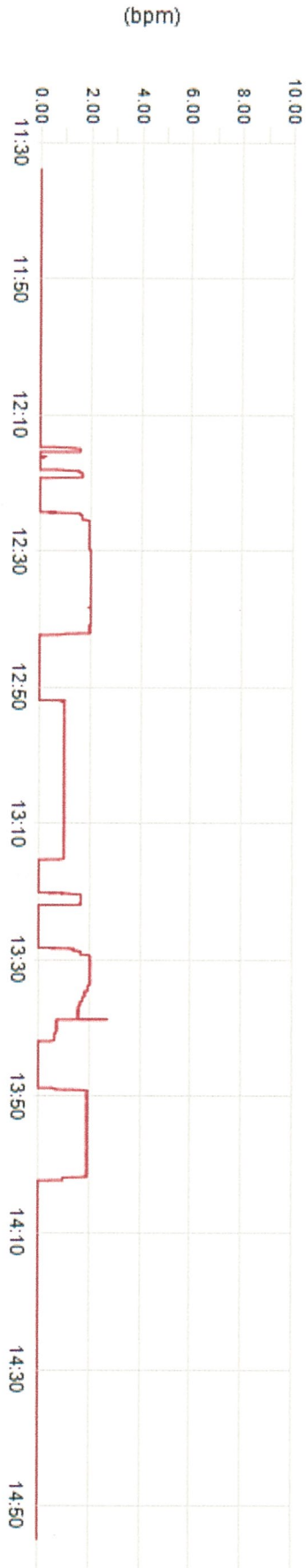
**Thank You For Using**  
**CJES O-TEX Cementing**



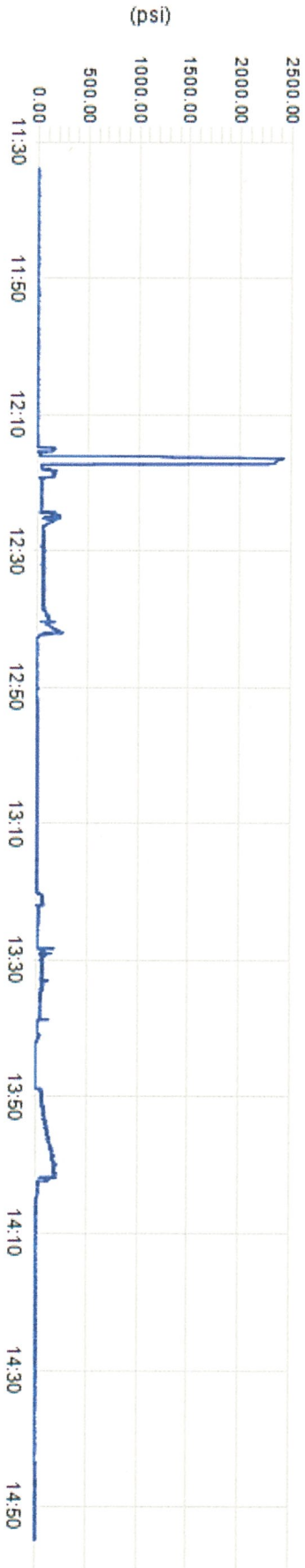


<b>Client</b>	PDC Energy	<b>Client Rep</b>	Ryan Beam	<b>Supervisor</b>	Jeff Kopp
<b>Ticket No.</b>	19010169	<b>Well Name</b>	State Peterson 42-16	<b>Unit No.</b>	445046
<b>Location</b>	SENE 16 5N63W	<b>Job Type</b>	Abandonment Plugs	<b>Service District</b>	Brighton Co
<b>Comments</b>		<b>Job Date</b>	01/31/2019		

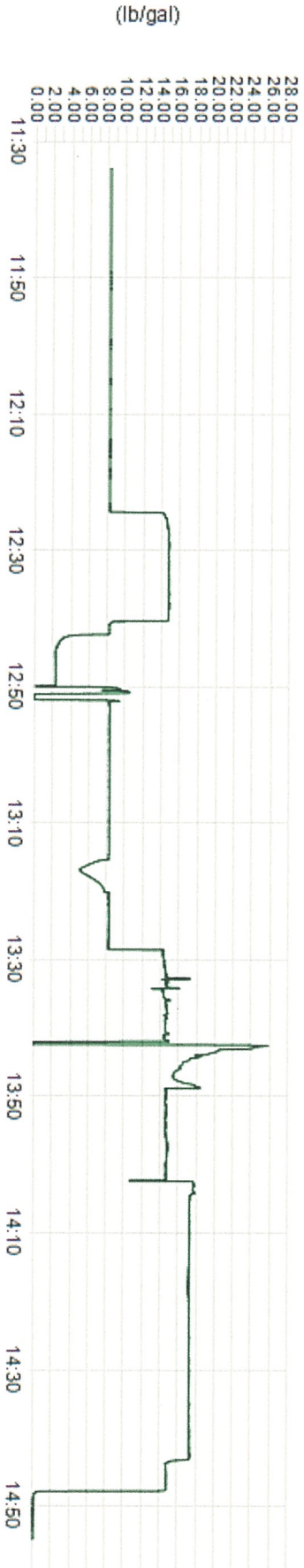
Unit 445046 Rate Total



Unit 445046 Pump Pressure



Unit 445046 Density





# RANGER ENERGY SERVICES, LLC

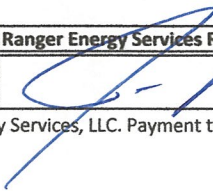
## WIRELINER DIVISION

3333 Center Dr.  
Milliken, CO  
80543



<b>Company Name:</b> PDC ENERGY, INC.		<b>Company Address:</b>		<b>Field Ticket Number:</b> 70001568
<b>Well Name:</b> STATE PETERSON 42-16	<b>Field:</b> WATTENBERG	<b>County:</b> WELD	<b>State:</b> COLORADO	<b>Rig Name &amp; Number:</b> BRIGADE RIG #7
<b>API #:</b> 05-123-20712	<b>AFE #:</b>		<b>Date:</b> 1/30/2019	<b>Wireline Unit #</b> 233
<b>SERVICE NOTES:</b> Gauge Ring to 6686' Set STS 4-1/2" 10K CIBP @ 6355' Casing Cut @ 1700' Set STS 4-1/2" 10K CIBP @ 6630" Cement Dump Bail 2sx @ 6355' Cement Dump Bail 2sx @ 6630" Cement Bond Log 2000' - Surface				<b>Engineer:</b> J. Michael <b>Operator:</b> T. VanNest <b>Operator:</b>

RUN	CODE	DESCRIPTIONS	QTY	UNIT PRICE	DISCOUNT	AMOUNT
	1000-001	Set Up Charge Cased Hole Unit	1			
	3000-001	Packoff Operation Charge0#-1000#	1			
	8000-009	Junk Catcher / Gauge Ring Depth Charge	6686			
	8000-010	Junk Catcher / Gauge Ring Operation Charge	1			
	8000-001	Bridge Plug Depth Charge	6630			
	8000-015	Setting Tool Rental, per tool	1			
	8000-002	Bridge Plug Operation Charge	1			
	8000-014	Standard Set Power Charge	1			
	7000-006	Dump Bailer Depth Charge	6630			
	7000-007	Dump Bailer Operation Charge	1			
	8000-001	Bridge Plug Depth Charge	6355			
	8000-015	Setting Tool Rental, per tool	1			
	8000-002	Bridge Plug Operation Charge	1			
	8000-014	Standard Set Power Charge	1			
	7000-006	Dump Bailer Depth Charge	6355			
	7000-007	Dump Bailer Operation Charge	1			
	4000-017	Cement Bond Log Depth Charge	2000			
	4000-018	Cement Bond Log Operation Charge	2000			
	4000-009	Simultaneous Gamma Ray Log Depth Charge	2000			
	4000-010	Simultaneous Gamma Ray Log Operation Charge	2000			
	4000-013	Simultaneous CCL Log Depth Charge	2000			
	4000-014	Simultaneous CCL Log Operation Charge	2000			
	5000-011	Jet Cutter Depth Charge	1700			
	5000-014	Jet Cutter Operation Charge for Casing	1			

<b>Customer Signature:</b>	<b>Customer Name Printed:</b> MR. RYAN BEAM	<b>Ranger Energy Services Representative Signature:</b> 	<b>Ranger Energy Services Representative:</b> JOE MICHAEL
----------------------------	--	--	--

The above estimated charges and data shown are subject to change by Ranger Energy Services, LLC. Payment terms are net 30 Days.