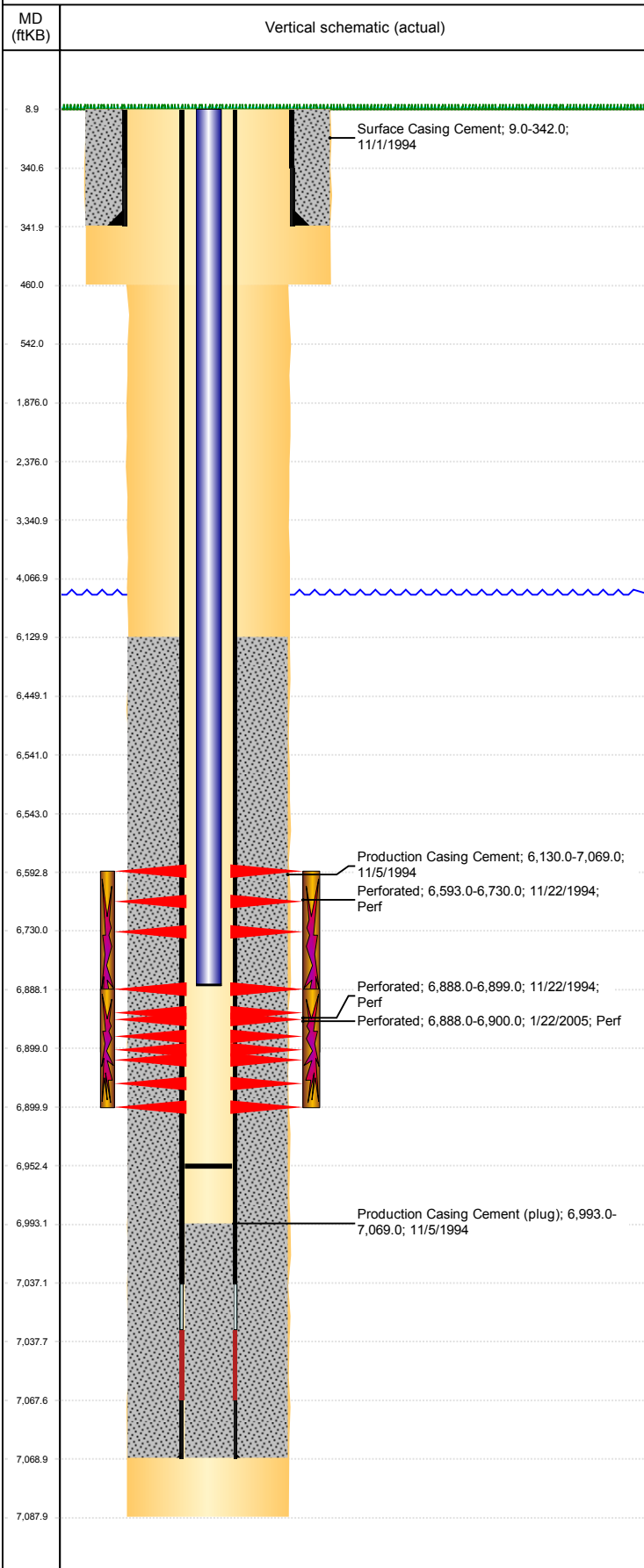


Well Name: RUBIX A32-04

VERTICAL, ORIGINAL HOLE, 2/28/2019 9:16:31 AM



Well Header									
API 05-123-18644		Business Unit DJ BASIN		District 15		Well Config VERTICAL			
KB - GL / MSL (ft... 9.00		Spud Date 11/1/1994		P & A Date		Well Production Status PR		SoRT No	
Comment									
Surface Location (Congressional)									
Qtr 3 NW	Qtr 4 NW	Section 32	Twnshp 6	Twnsh... N	Range 64	Rng E... W	Actual Latitude (°) 40.44841207	Actual Longitude (°) -104.58093240	
Wellbore Sections									
Section Des			Size (in)			Act Top, MD (ftKB)		Act Btm, MD (ftKB)	
SURFACE			12 1/4			9		460	
PRODUCTION			7 7/8			460		7,088	
Casing Strings									
Csg Des			Run Date		OD (in)	Wt/Len (lb/ft)	Grade	Top, MD (ftKB)	MD (ftKB)
Surface			11/1/1994		8 5/8	24.00		9.0	342.0
Production			11/5/1994		2 7/8	6.50	N-80	9.0	7,069.0
Cement									
Des					Start Date		Top (ftKB)		Btm (ftKB)
Surface Casing Cement					11/1/1994		9.0		342.0
Production Casing Cement					11/5/1994		6,130.0		7,069.0
Zone Statuses									
Zone Name	Status Date	Status	Fluid Type	Job				Prod Method	
NIOBRARA	3/5/2010	PR	Water	RE-FRAC, 1/21/2005 00:00				Flowing	
NIOBRARA	2/13/2016	PR							
CODELL	2/4/2005	PR							
CODELL	3/5/2010	PR	Water					Flowing	
Perforation Data									
Linked Zone			Bnch/Stg	Entered Shot Total	Top (ftKB)		Btm (ftKB)		Date
NIOBRARA, ORIGINAL HOLE				12	6,593.00		6,730.00		11/22/1994
CODELL, ORIGINAL HOLE				48	6,888.00		6,900.00		1/22/2005
CODELL, ORIGINAL HOLE				10	6,888.00		6,899.00		11/22/1994
Stimulation Intervals									
Zone				Start Date		Top (ftKB)		Btm (ftKB)	
NIOBRARA-CODELL, ORIGINAL HOLE				11/23/1994		6,593.0		6,899.0	
CODELL, ORIGINAL HOLE				1/31/2005		6,888.0		6,900.0	
Other In Hole									
Run Date		Des				OD (in)	Top (ftKB)		Btm (ftKB)
Logs									
Date		Type				Top, MD (ftKB)		Btm, MD (ftKB)	
11/5/1994		COMPENSATED DENSITY				3,500.0		7,080.0	
11/5/1994		INDUCTION				3,500.0		4,500.0	
11/11/1994		CBL/CCL/GR				5,900.0		6,986.0	
Plug Back Total Depths									
Date		Type		Com				Depth (ftKB)	
11/11/1994		FILL		DEPTH LOGGER ON CBL				6,993.0	
2/3/2005		FILL		TAGGED FILL				6,952.4	