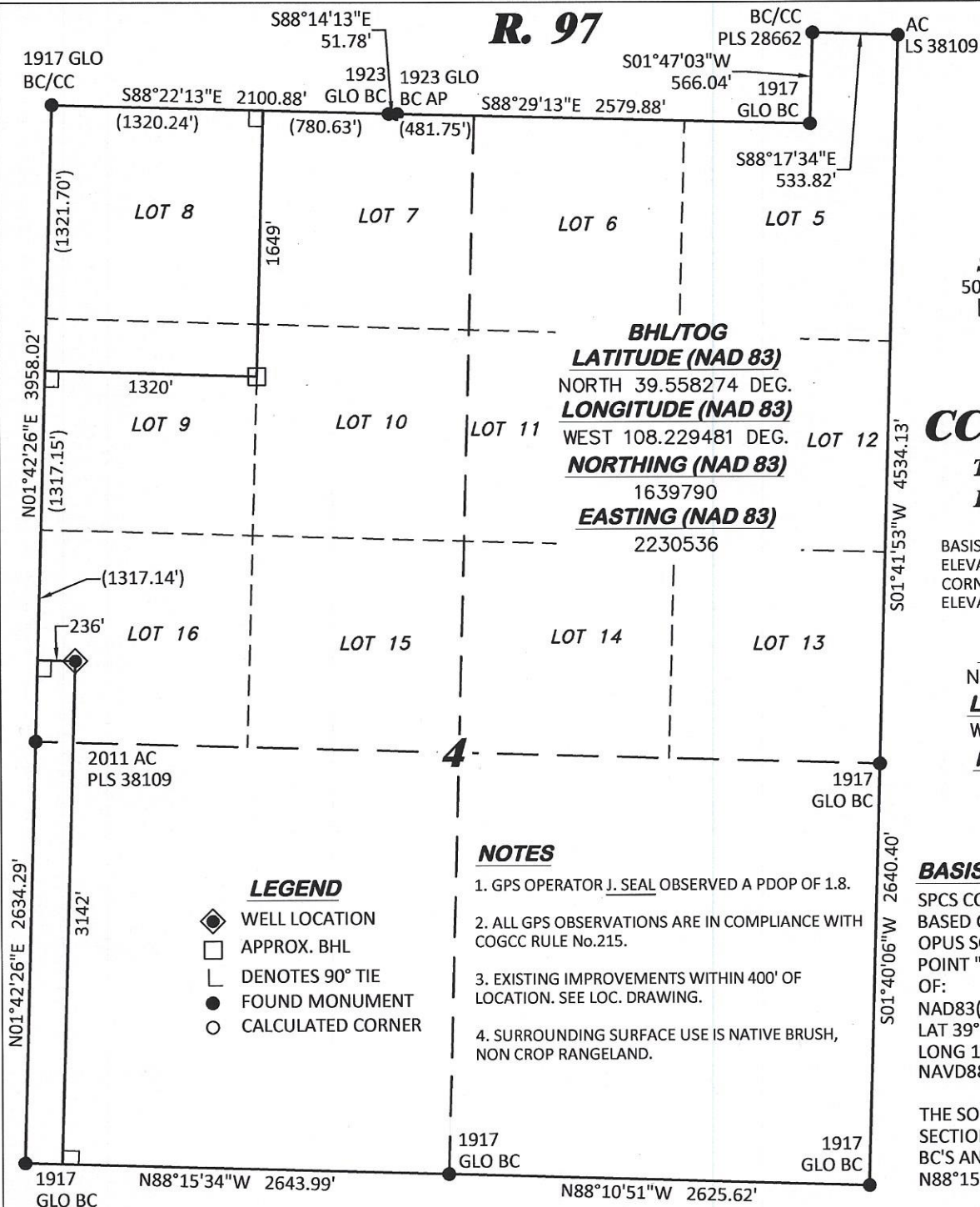


R. 97**LEGEND**

- ◆ WELL LOCATION
- APPROX. BHL
- └ DENOTES 90° TIE
- FOUND MONUMENT
- CALCULATED CORNER

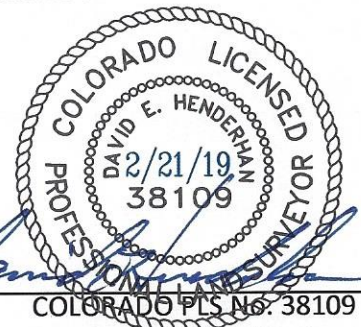
NOTES

1. GPS OPERATOR J. SEAL OBSERVED A PDOP OF 1.8.
2. ALL GPS OBSERVATIONS ARE IN COMPLIANCE WITH COGCC RULE No.215.
3. EXISTING IMPROVEMENTS WITHIN 400' OF LOCATION. SEE LOC. DRAWING.
4. SURROUNDING SURFACE USE IS NATIVE BRUSH, NON CROP RANGELAND.

SURVEYOR'S STATEMENT

I, DAVID E. HENDERHAN, AN EMPLOYEE AND AGENT ON BEHALF OF D.R. GRIFFIN & ASSOCIATES, INC. STATE THE PLAT HEREON IS A CORRECT REPRESENTATION OF A SURVEY MADE UNDER MY SUPERVISION ON THE 13th DAY OF JANUARY, 2012 OF THE SHOWN CC 0697-04-07W AS-DRILLED CONDUCTOR.

Notice: In accordance with Colorado State Law, any legal action based upon any defect in this survey plat must commence within three (3) years after first discovery of such defect. In no event, may any action based upon any defect in this survey plat be commenced more than ten (10) years from the date of certification shown hereon.

CC 604-12-13 ANNEX PAD

DRG **DAVID E. HENDERHAN & ASSOCIATES, INC.**
(307) 362-6028 1414 ELK ST., ROCK SPRINGS, WY 82901

DRAWN: 12/26/2017 - DEH

SCALE: 1" = 1000'

REVISED: 2/20/2019 - TCM

DRG JOB No. 21376

SHL MOVE

A9-04-07W

**PLAT OF AS-DRILLED CONDUCTOR
IN LOT 16, SECTION 4, FOR
LARAMIE ENERGY, LLC.**

**3142' F/SL, & 236' F/WL, SECTION 4,
T. 6 S., R. 97, 6TH P.M.,
GARFIELD COUNTY, COLORADO**