



Corporate Office
1775 Sherman Street, #3000
Denver, Colorado 80203
303.860.5800
www.pdce.com

November 30, 2018

HighPoint Operating Corporation
1099 18th St., Suite 2300
Denver, CO 80202

Re: **Stimulation Setback Consent, Rule 317.s.**
Wayne 22Y-302
NESE Section 22, T5N-R64W
Weld County, Colorado

To Whom It May Concern,

PDC Energy, Inc. ("PDC") hereby requests a Statewide Fracture Stimulation Setback waiver from HighPoint Operating Corporation, the offset operator of the following wells that are estimated to be closer than 150' to the subject well(s).

PDC Proposed Well	HighPoint Encroached Upon Well		3D Interwell Distance
Wayne 22Y-302	Peterson CX GH 30-27D	05-123-36143	131'
	Peterson CX GH 30-28D	05-123-36170	132'

Per COGCC Rule 317s., No portion of a proposed wellbore's treated interval shall be located within 150 feet of an existing (producing, shut-in, or temporarily abandoned) or permitted oil and gas wellbore's treated interval belonging to another operator without the signed written consent of the operator of the encroached upon wellbore. The signed written consent shall be attached to the Application for Permit-to-Drill, Form 2 for the proposed wellbore.

If HighPoint Operating Corporation is in agreement to waive the Rule 317.s requirement, please sign the waiver in the space provided below.

Sincerely,

A handwritten signature in blue ink, appearing to read "Ally Ota".

Ally Ota
Regulatory Technician
PDC Energy, Inc.



Corporate Office
1775 Sherman Street, #3000
Denver, Colorado 80203
303.860.5800
www.pdce.com

As the offset operator or a designated representative thereof, I understand that the subject well will be potentially drilled and stimulated within 150' of the offset well listed above. I hereby give my consent for the subject well(s).

OPERATOR: HIGHPOINT OPERATING CORPORATION

A handwritten signature in blue ink, appearing to read "Julie T. Jenkins", written over a horizontal line.

Signature

JK

1.7.19

Date

Julie T. Jenkins, Sr. Director, Land

Name, Title

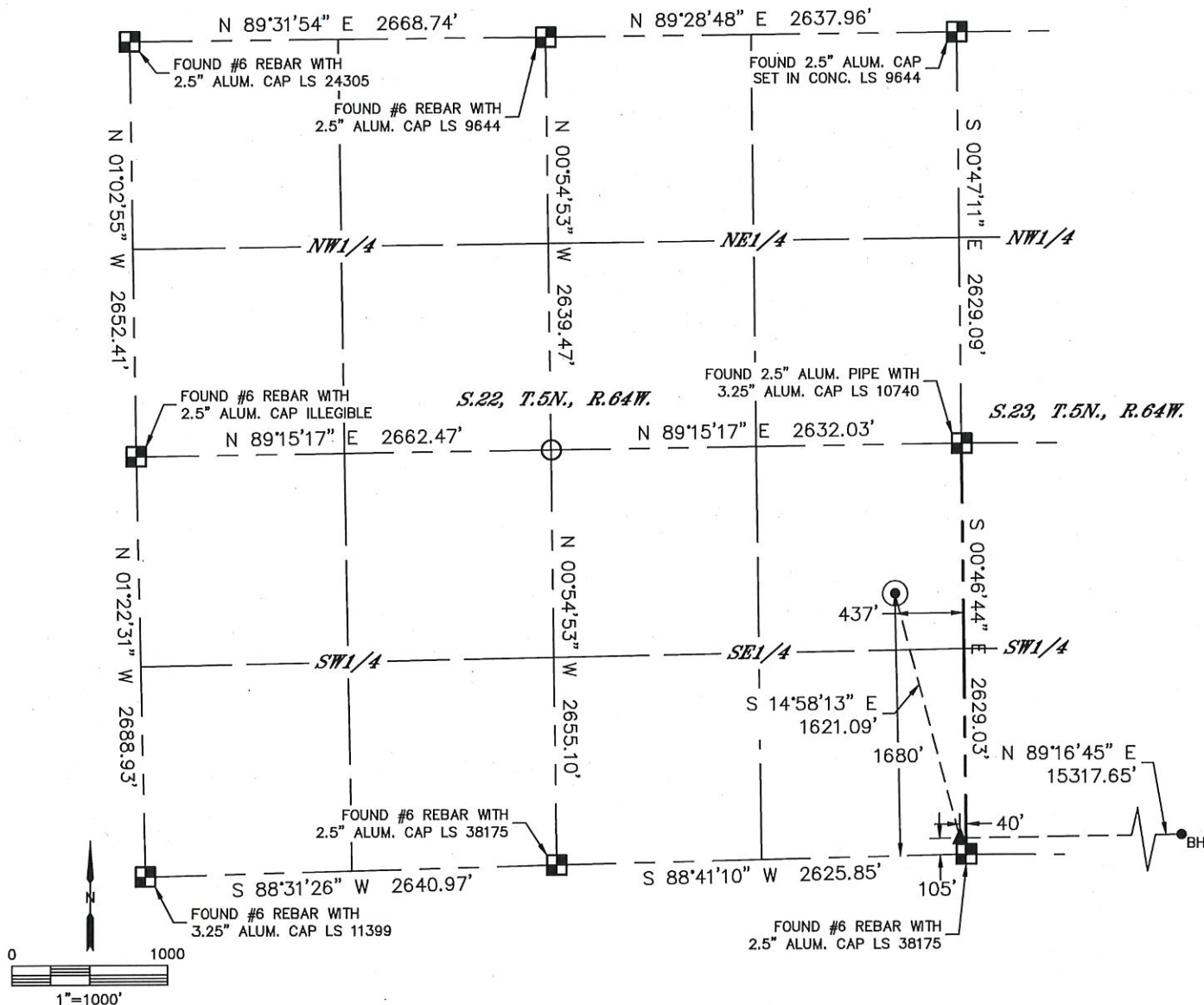


Lat40°, Inc. 6250 W. 10th Street, Unit 2, Greeley, CO 970-515-5294

WELL LOCATION CERTIFICATE

WAYNE 22Y-302

SECTION: 22
TOWNSHIP: 5N
RANGE: 64W
6TH. P.M.
WELD COUNTY, CO



CLIENT: PDC ENERGY, INC.					LANDMAN: DANIELLE BARNES				
INSTRUMENT OPERATOR: JAKE STILLE					SURVEY DATE: 9/29/2018		SURFACE USE: CROPLAND		
SHL FOOTAGE				SHL LAT °	SHL LONG °	SHL PDOP	SHL ELEV (FT.)	SHL 1/4/1/4	SHL S-T-R
1680	FSL	437	FEL	40.38224	-104.52795	5.3	4600	NESE	22-5-64

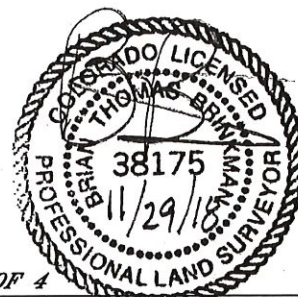
BHL FOOTAGE				BHL LAT °	BHL LONG °	BHL S-T-R	EP LAT °	EP LONG °	EP S-T-R
105	FSL	500	FEL	40.37798	-104.47155	19-5-63	40.37793	-104.52651	22-5-64

LEGEND

- = ALIQUOT MONUMENT AS DESCRIBED
- = CALCULATED POSITION
- = SURFACE HOLE LOCATION (SHL)
- ▲ = ENTRY POINT LOCATION (EP)
- _{BH} = BOTTOM HOLE LOCATION (BHL)
- ⊙ = EXISTING WELL
- ⊙ = ABANDONED WELL

NOTE:

- Bearings shown are Grid Bearings of the Colorado State Plane Coordinate System, North Zone, North American Datum 1983. The lineal dimensions as contained herein are based upon the "U.S. Survey Foot."
- Distances to section lines measured at 90 degrees from said section lines.
- Ground elevations are based on an observed GPS elevation (NAVD 1988 DATUM).
- Latitude and Longitude shown are (NAD 83 DATUM).
- IMPROVEMENTS: See LOCATION DRAWING for all visible improvements within 500' of oil and gas location.
- This map does not represent a boundary survey.



SHEET 1 OF 4

Brian T. Brinkman—On behalf of Lat40°, Inc.
Colorado Licensed Professional Land Surveyor No. 38175
DATE: 11/29/2018
PROJECT#: 2018142

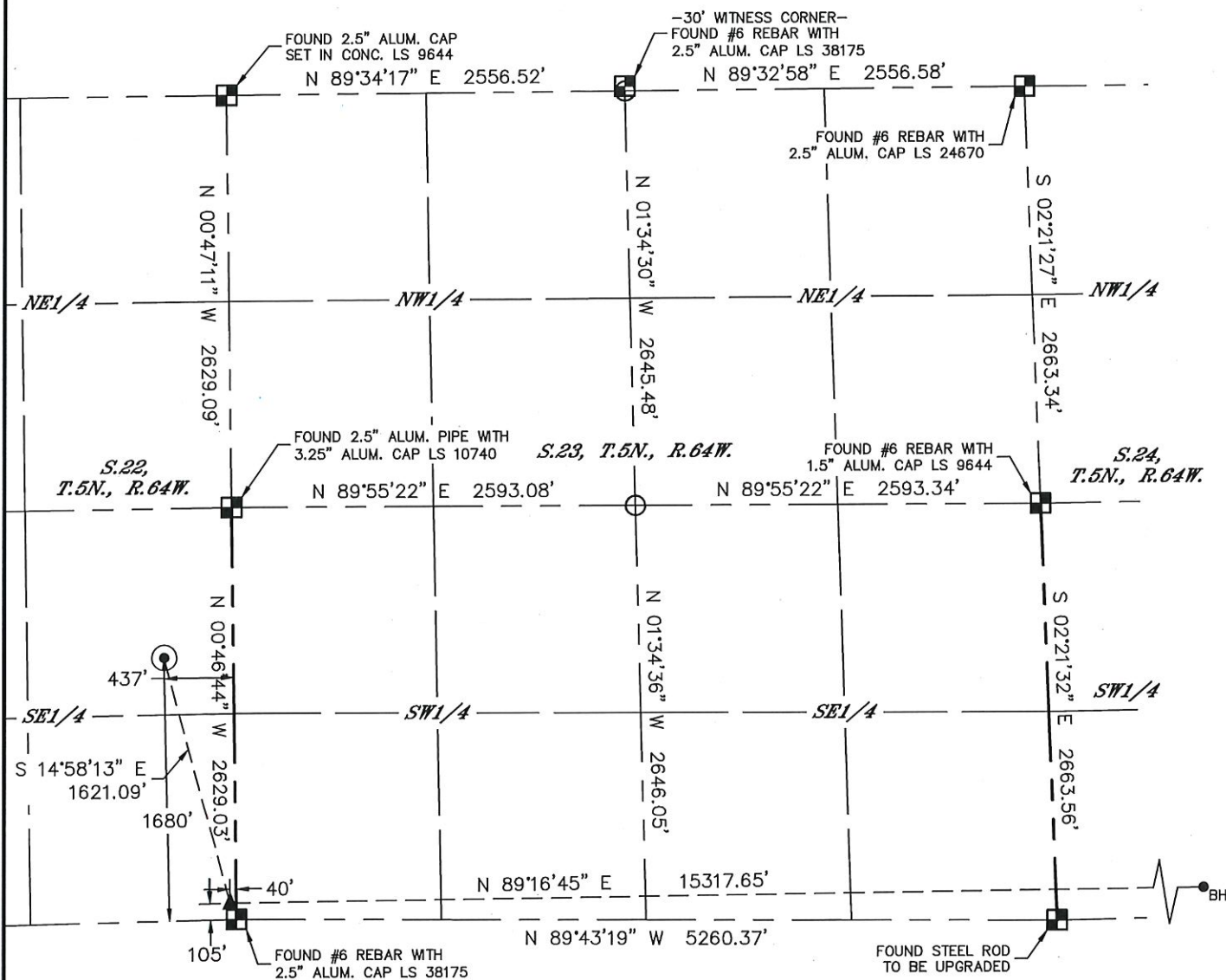


Lat40°, Inc. 6250 W. 10th Street, Unit 2, Greeley, CO 970-515-5294

WELL LOCATION CERTIFICATE

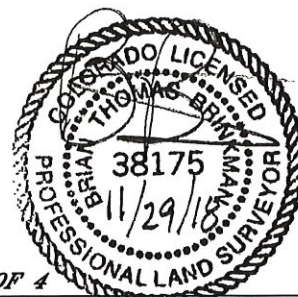
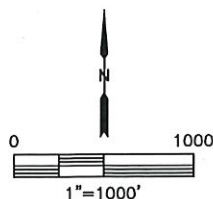
WAYNE 22Y-302

SECTION: 22
TOWNSHIP: 5N
RANGE: 64W
6TH. P.M.
WELD COUNTY, CO



LEGEND

- = ALIQUOT MONUMENT AS DESCRIBED
- = CALCULATED POSITION
- = SURFACE HOLE LOCATION (SHL)
- ▲ = ENTRY POINT LOCATION (EP)
- _{BH} = BOTTOM HOLE LOCATION (BHL)
- ⊙ = EXISTING WELL
- ⊙ = ABANDONED WELL



SHEET 2 OF 4

Brian T. Brinkman—On behalf of Lat40°, Inc.
Colorado Licensed Professional Land Surveyor No. 38175
DATE: 11/29/2018
PROJECT#: 2018142

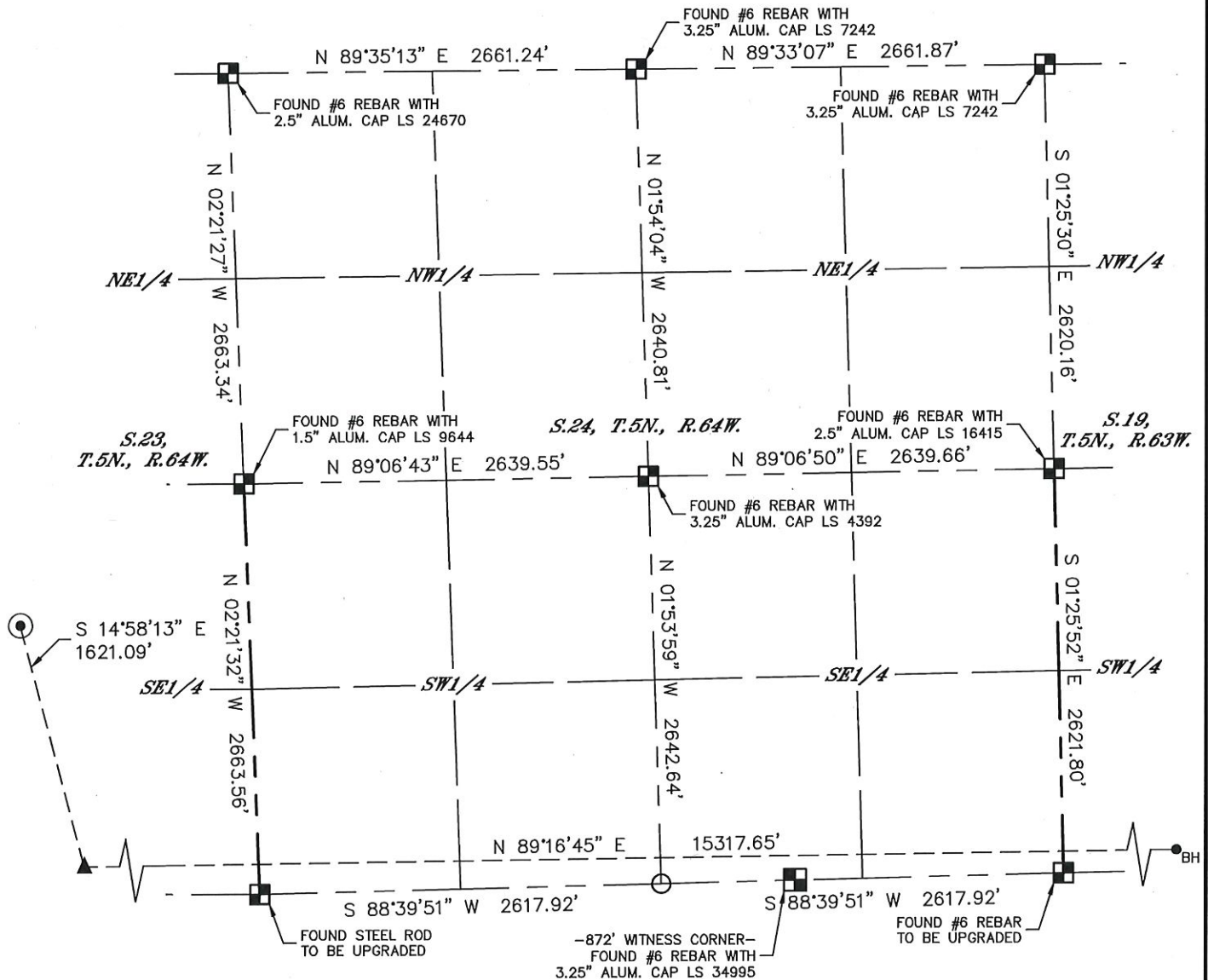


Lat40°, Inc. 6250 W. 10th Street, Unit 2, Greeley, CO 970-515-5294

WELL LOCATION CERTIFICATE

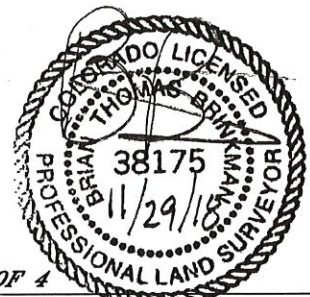
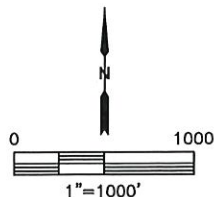
WAYNE 22Y-302

SECTION: 22
TOWNSHIP: 5N
RANGE: 64W
6TH. P.M.
WELD COUNTY, CO



LEGEND

- = ALIQUOT MONUMENT AS DESCRIBED
- = CALCULATED POSITION
- = SURFACE HOLE LOCATION (SHL)
- ▲ = ENTRY POINT LOCATION (EP)
- _{BH} = BOTTOM HOLE LOCATION (BHL)
- ⊙ = EXISTING WELL
- ⊙ = ABANDONED WELL



SHEET 3 OF 4

Brian T. Brinkman—On behalf of Lat40°, Inc.
Colorado Licensed Professional Land Surveyor No. 38175
DATE: 11/29/2018
PROJECT#: 2018142

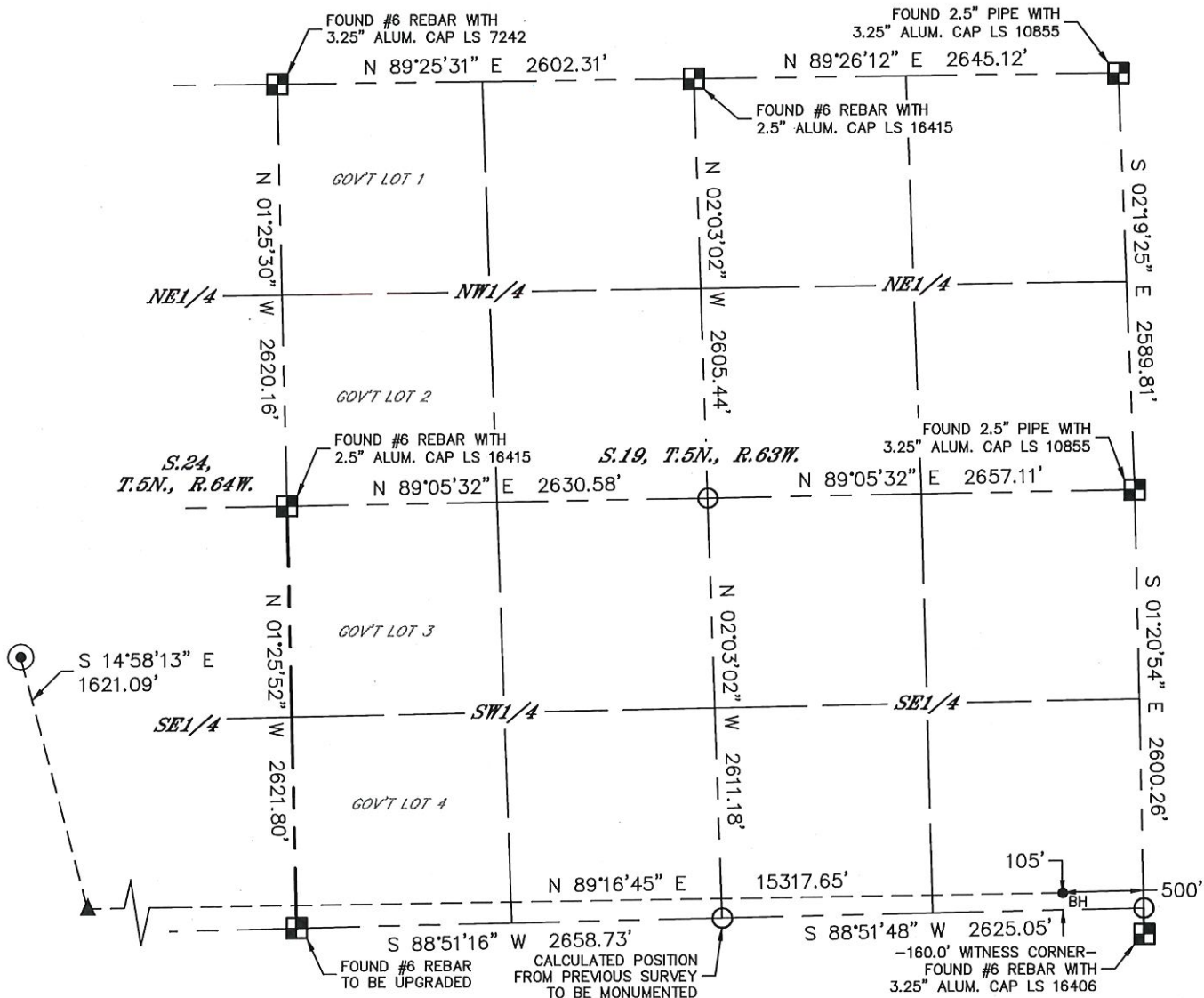


Lat40°, Inc. 6250 W. 10th Street, Unit 2, Greeley, CO 970-515-5294

WELL LOCATION CERTIFICATE

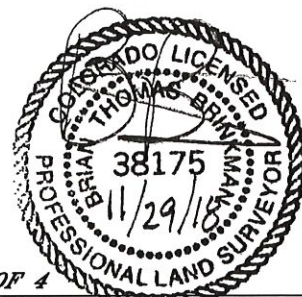
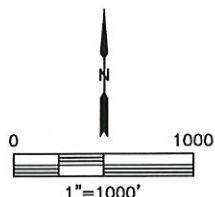
WAYNE 22Y-302

SECTION: 22
TOWNSHIP: 5N
RANGE: 64W
6TH. P.M.
WELD COUNTY, CO



LEGEND

- = ALIQUOT MONUMENT AS DESCRIBED
- = CALCULATED POSITION
- = SURFACE HOLE LOCATION (SHL)
- ▲ = ENTRY POINT LOCATION (EP)
- _{BH} = BOTTOM HOLE LOCATION (BHL)
- ⊙ = EXISTING WELL
- ⊙ = ABANDONED WELL



SHEET 4 OF 4

Brian T. Brinkman—On behalf of Lat40°, Inc.
Colorado Licensed Professional Land Surveyor No. 38175
DATE: 11/29/2018
PROJECT#: 2018142

