

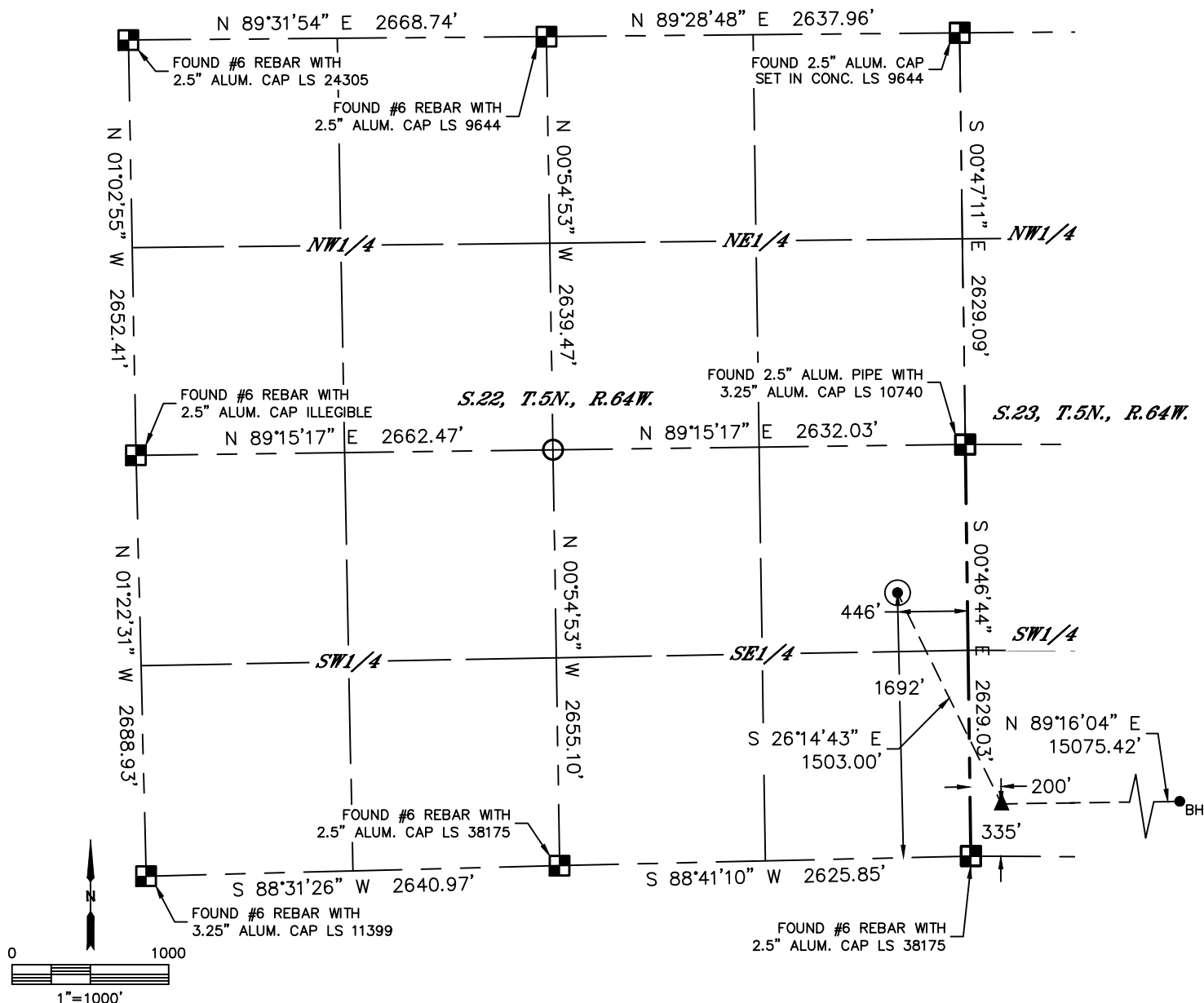


Lat40°, Inc. 6250 W. 10th Street, Unit 2, Greeley, CO 970-515-5294

# WELL LOCATION CERTIFICATE

WAYNE 22Y-212

SECTION: 22  
TOWNSHIP: 5N  
RANGE: 64W  
6TH. P.M.  
WELD COUNTY, CO



CLIENT: PDC ENERGY, INC.				LANDMAN: DANIELLE BARNES			
INSTRUMENT OPERATOR: JAKE STILLE				SURVEY DATE: 9/29/2018		SURFACE USE: CROPLAND	
SHL FOOTAGE				SHL LAT °	SHL LONG °	SHL PDOP	SHL ELEV (FT.)
1692	FSL	446	FEL	40.38227	-104.52799	2.8	4600
				SHL 1/4/1/4		SHL S-T-R	
				NESE		22-5-64	

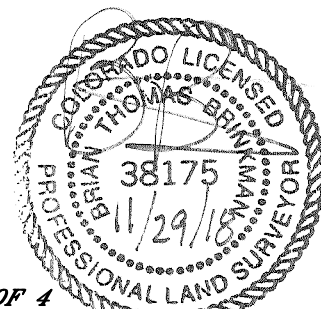
BHL FOOTAGE				BHL LAT °	BHL LONG °	BHL S-T-R	EP LAT °
335	FSL	500	FEL	40.37862	-104.47156	19-5-63	40.37855
				EP LONG °		EP S-T-R	
				-104.52565		23-5-64	

## LEGEND

- = ALIQUOT MONUMENT AS DESCRIBED
- = CALCULATED POSITION
- = SURFACE HOLE LOCATION (SHL)
- ▲ = ENTRY POINT LOCATION (EP)
- <sub>BH</sub> = BOTTOM HOLE LOCATION (BHL)
- ⊙ = EXISTING WELL
- ⊙ = ABANDONED WELL

## NOTE:

- 1) Bearings shown are Grid Bearings of the Colorado State Plane Coordinate System, North Zone, North American Datum 1983. The lineal dimensions as contained herein are based upon the "U.S. Survey Foot."
- 2) Distances to section lines measured at 90 degrees from said section lines.
- 3) Ground elevations are based on an observed GPS elevation (NAVD 1988 DATUM).
- 4) Latitude and Longitude shown are (NAD 83 DATUM).
- 5) IMPROVEMENTS: See LOCATION DRAWING for all visible improvements within 500' of oil and gas location.
- 6) This map does not represent a boundary survey.



SHEET 1 OF 4

Brian T. Brinkman—On behalf of Lat40°, Inc.  
Colorado Licensed Professional Land Surveyor No. 38175  
DATE: 11/29/2018  
PROJECT#: 2018142

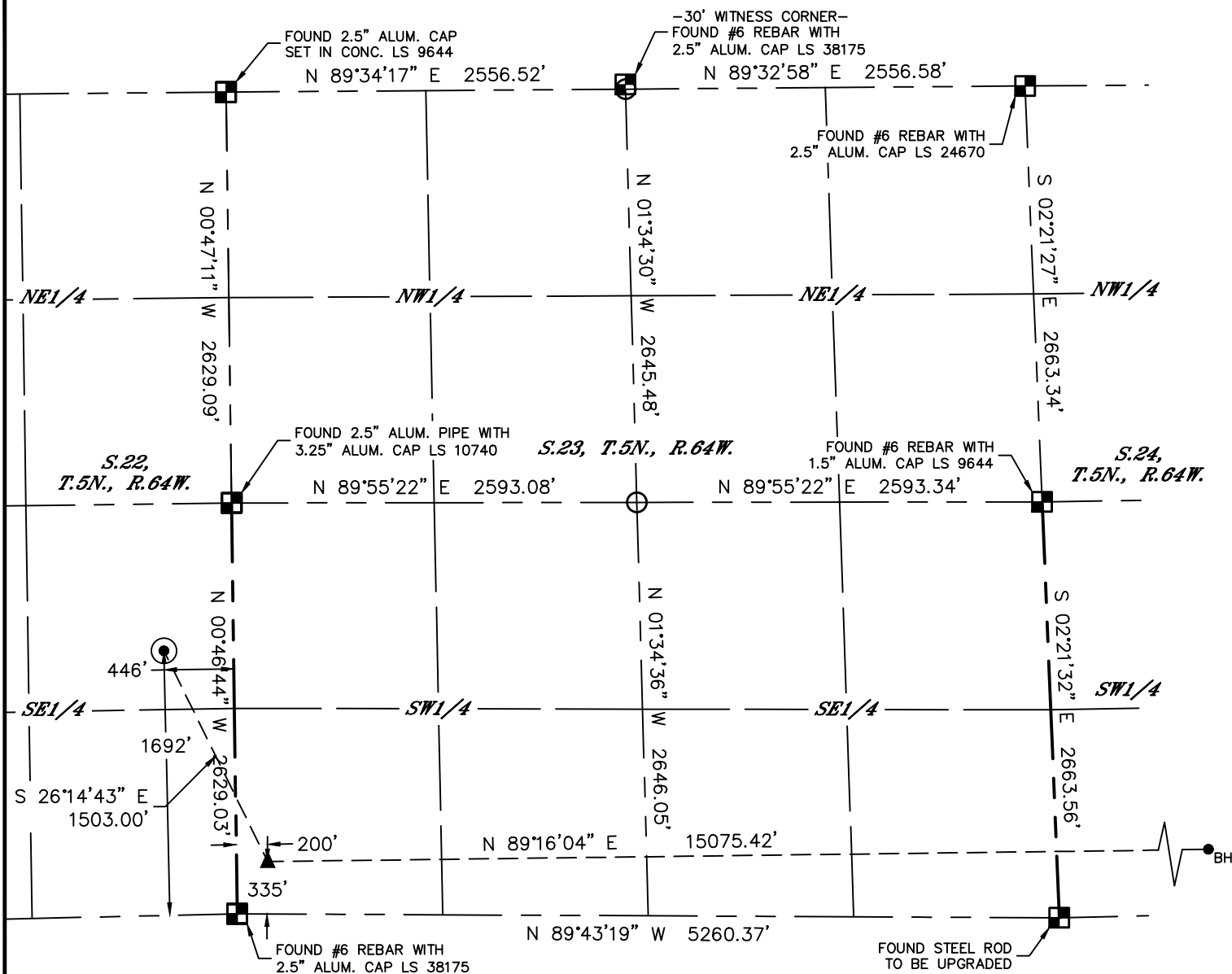


Lat40°, Inc. 6250 W. 10th Street, Unit 2, Greeley, CO 970-515-5294

# WELL LOCATION CERTIFICATE

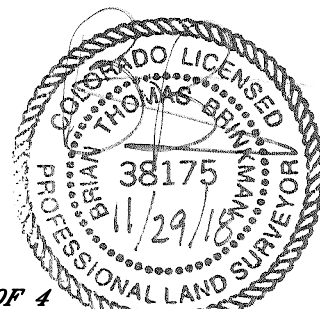
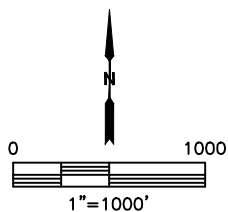
WAYNE 22Y-212

SECTION: 22  
TOWNSHIP: 5N  
RANGE: 64W  
6TH. P.M.  
WELD COUNTY, CO



## LEGEND

- = ALIQUOT MONUMENT AS DESCRIBED
- = CALCULATED POSITION
- = SURFACE HOLE LOCATION (SHL)
- ▲ = ENTRY POINT LOCATION (EP)
- <sub>BH</sub> = BOTTOM HOLE LOCATION (BHL)
- ⊙ = EXISTING WELL
- ⊙ = ABANDONED WELL



SHEET 2 OF 4

Brian T. Brinkman—On behalf of Lat40°, Inc.  
Colorado Licensed Professional Land Surveyor No. 38175  
DATE: 11/29/2018  
PROJECT#: 2018142

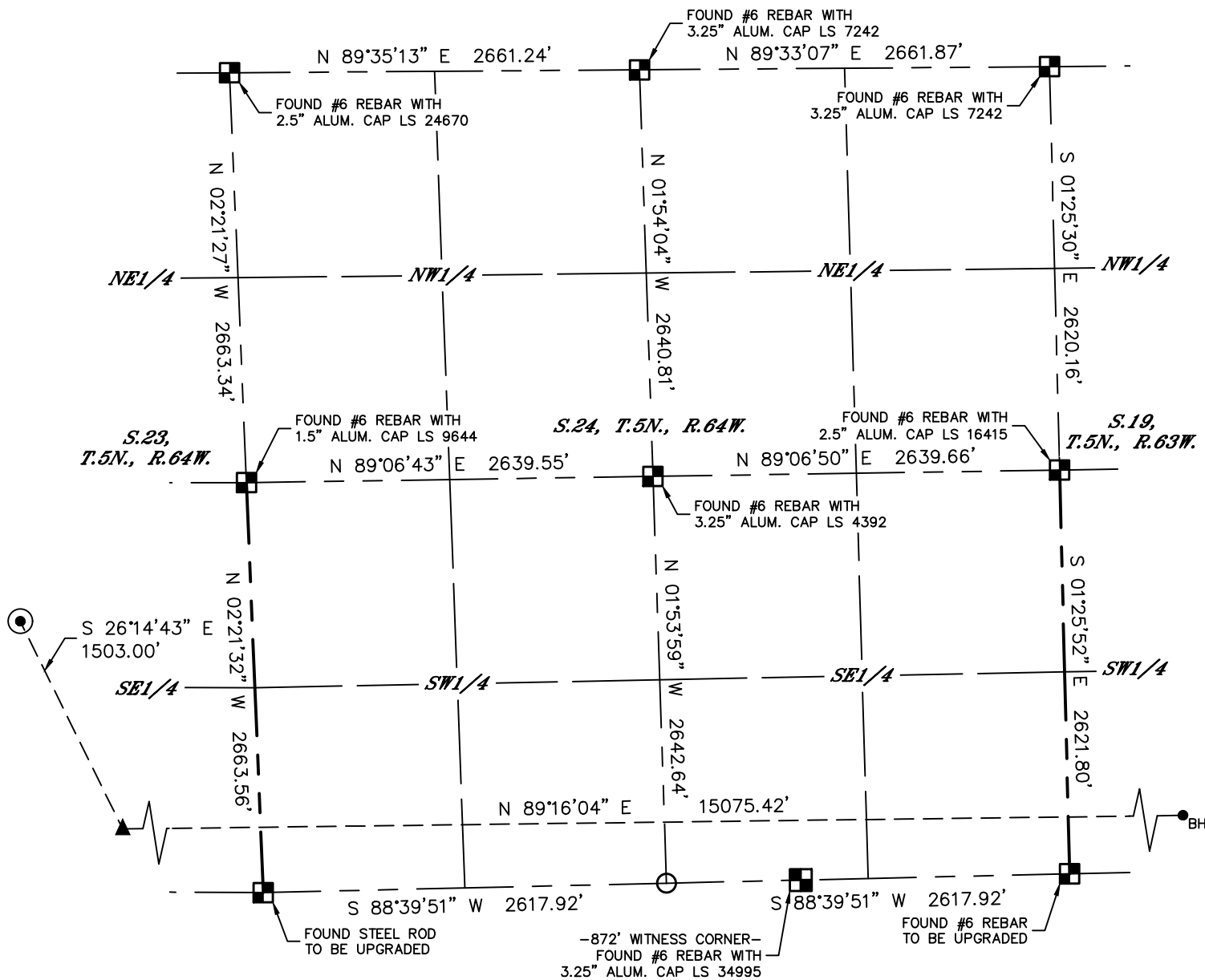


Lat40°, Inc. 6250 W. 10th Street, Unit 2, Greeley, CO 970-515-5294

# WELL LOCATION CERTIFICATE

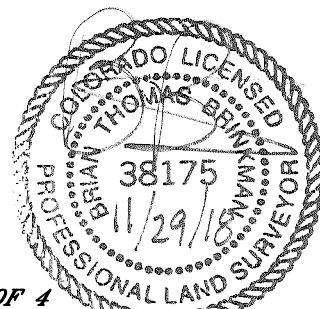
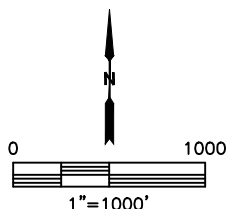
WAYNE 22Y-212

SECTION: 22  
TOWNSHIP: 5N  
RANGE: 64W  
6TH. P.M.  
WELD COUNTY, CO



## LEGEND

- = ALIQUOT MONUMENT AS DESCRIBED
- = CALCULATED POSITION
- = SURFACE HOLE LOCATION (SHL)
- ▲ = ENTRY POINT LOCATION (EP)
- <sub>BH</sub> = BOTTOM HOLE LOCATION (BHL)
- ⊙ = EXISTING WELL
- ⊙ = ABANDONED WELL



SHEET 3 OF 4

Brian T. Brinkman—On behalf of Lat40°, Inc.  
Colorado Licensed Professional Land Surveyor No. 38175  
DATE: 11/29/2018  
PROJECT#: 2018142

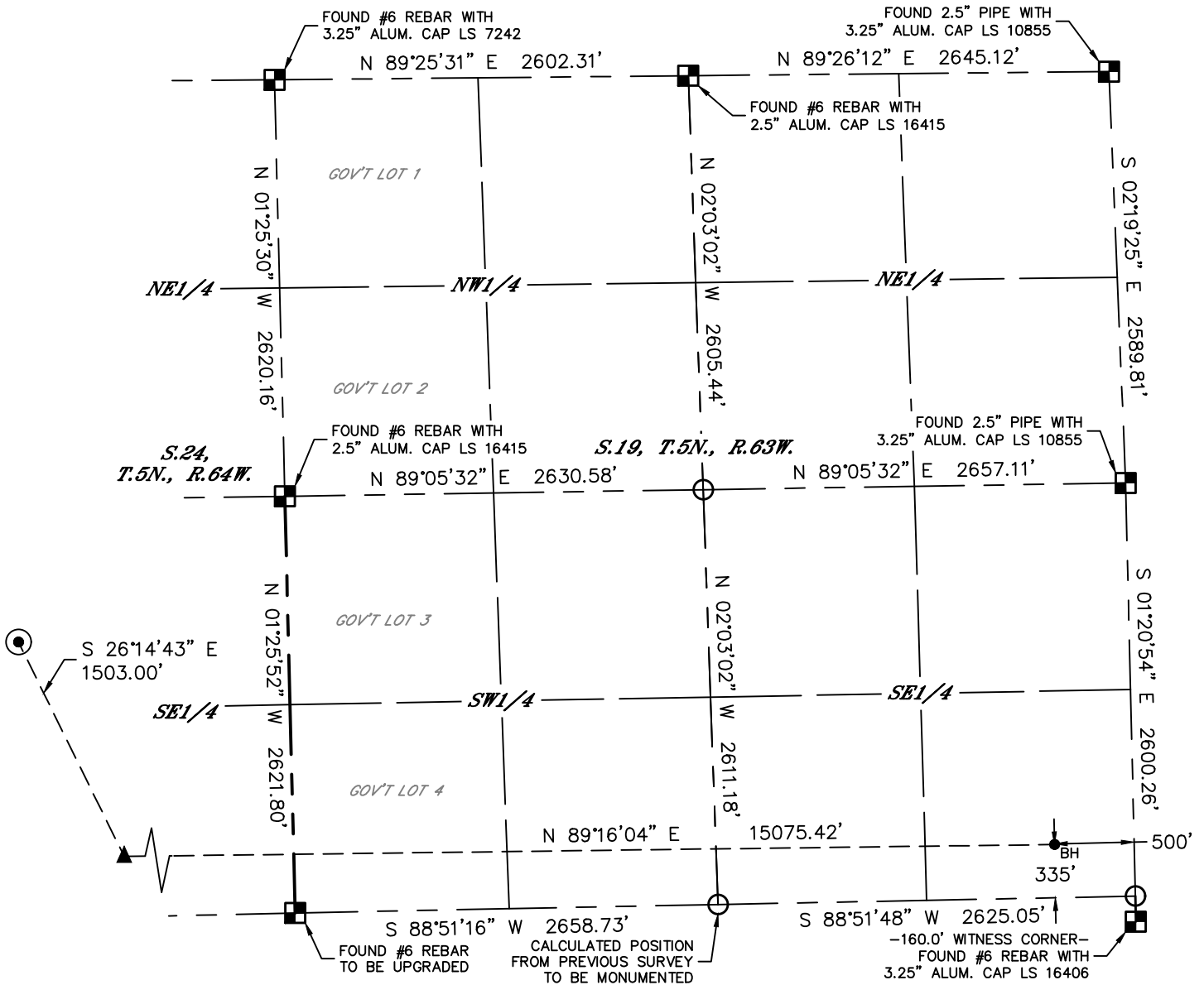


Lat40°, Inc. 6250 W. 10th Street, Unit 2, Greeley, CO 970-515-5294

# WELL LOCATION CERTIFICATE

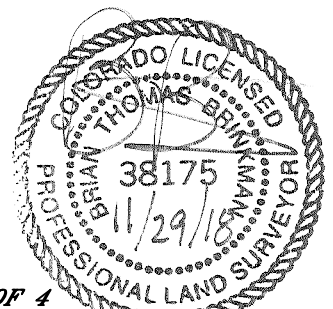
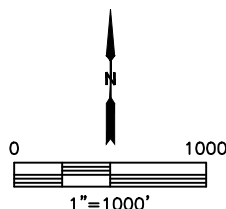
WAYNE 22Y-212

SECTION: 22  
TOWNSHIP: 5N  
RANGE: 64W  
6TH. P.M.  
WELD COUNTY, CO



## LEGEND

- = ALIQUOT MONUMENT AS DESCRIBED
- = CALCULATED POSITION
- = SURFACE HOLE LOCATION (SHL)
- = ENTRY POINT LOCATION (EP)
- = BOTTOM HOLE LOCATION (BHL)
- = EXISTING WELL
- = ABANDONED WELL



**SHEET 4 OF 4**

Brian T. Brinkman—On behalf of Lat40°, Inc.  
Colorado Licensed Professional Land Surveyor No. 38175  
DATE: 11/29/2018  
PROJECT#: 2018142