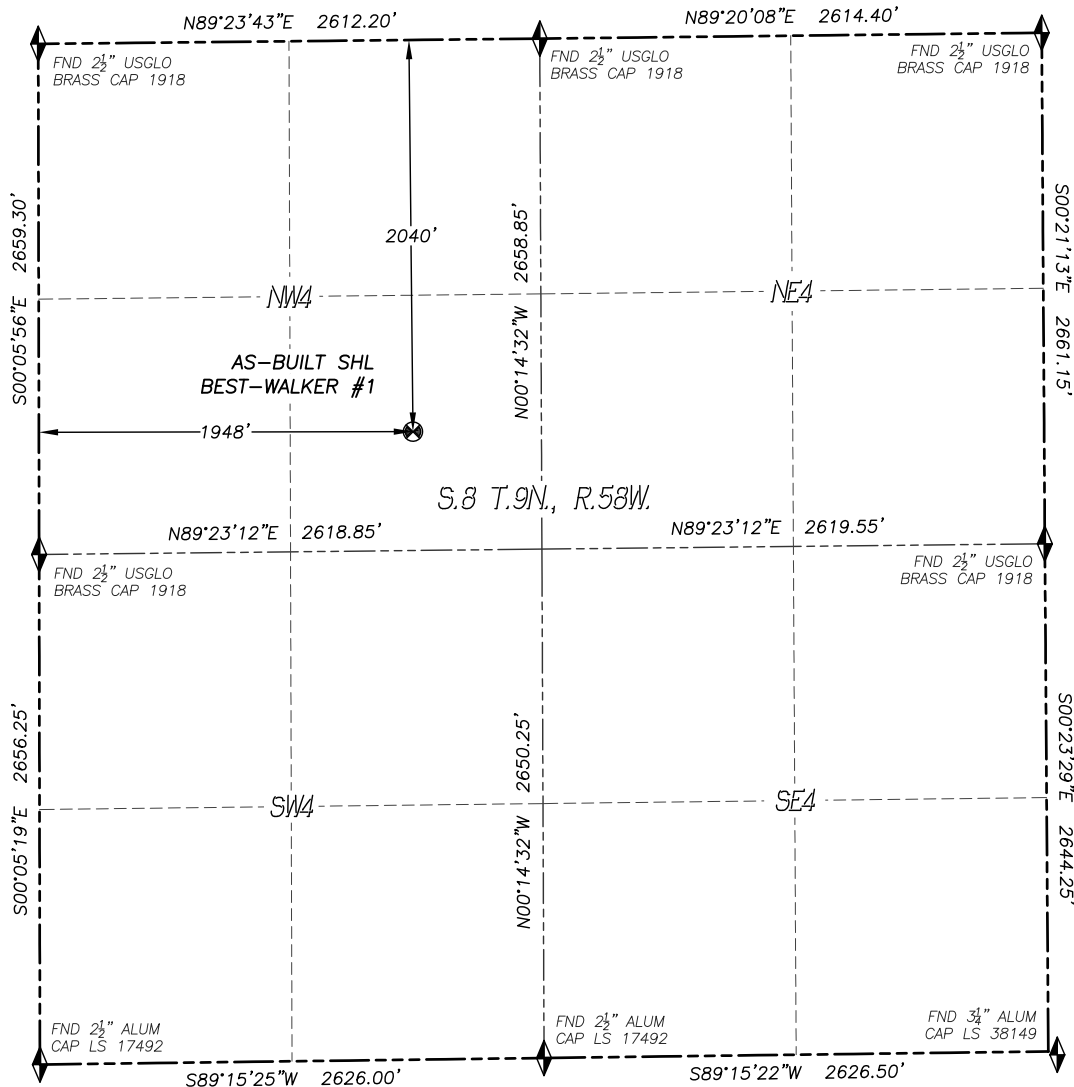


WELL AS-BUILT SURVEY BEST-WALKER #1

SECTION 8, TOWNSHIP 9 NORTH, RANGE 58 WEST OF THE 6TH P.M.

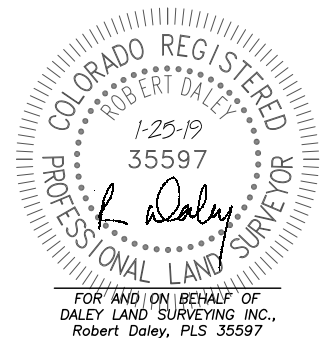


IN ACCORDANCE WITH A REQUEST FROM NOBLE ENERGY INC., DALEY LAND SURVEYING, INC. HAS DETERMINED THE SURFACE LOCATION OF THE **BEST-WALKER #1** WELL TO BE 2040' FNL, 1948' FWL, AS MEASURED AT NINETY (90) DEGREES FROM THE SECTION LINES OF SECTION 8, TOWNSHIP 9 NORTH, RANGE 58 WEST, OF THE 6TH PRINCIPAL MERIDIAN, WELD COUNTY, COLORADO.

I HEREBY STATE THAT THIS WELL AS-BUILT SURVEY WAS PREPARED BY ME OR UNDER MY DIRECT SUPERVISION, THAT THE WORK WAS COMPLETED ON 1/23/2019 FOR AND ON BEHALF OF NOBLE ENERGY INC., AND THAT THIS MAP DOES NOT REPRESENT A BOUNDARY SURVEY, IT IS NOT A LAND SURVEY PLAT OR AN IMPROVEMENT SURVEY PLAT AND IT IS NOT TO BE RELIED UPON FOR THE ESTABLISHMENT OF FENCE, BUILDING OR OTHER FUTURE IMPROVEMENT LINES.

NOTES:

- 1) BEARINGS FOR THIS MAP ARE ASSUMED AND BASED UPON GPS OBSERVATIONS MADE BETWEEN MONUMENTS LOCATED AT THE WEST QUARTER CORNER AND THE NORTHWEST CORNER OF SECTION 8, TOWNSHIP 9 NORTH, RANGE 58 WEST.
- 2) HORIZONTAL DATUM IS NAD83.
- 3) VERTICAL DATUM IS NAVD88 AND ORIGINATES FROM THE LOCAL C.O.R.S. NETWORK, UTILIZING THE GEOID12A MODEL.
- 4) SURFACE USE: RANGELAND.
- 5) INST. OPERATOR: KYLE DALEY
- 6) LOCATION DETERMINED USING METAL LOCATOR.



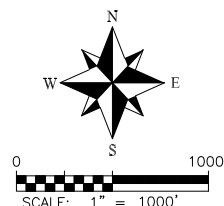
NAD 83 LATITUDE AND LONGITUDE

SURFACE LOCATION:

LATITUDE: N40.76745°
LONGITUDE: W103.89076°
ELEV: 4821'
PDOP: 1.5
QTR/QTR: SE4/NW4

LEGEND

- ◆ FOUND MONUMENT AS DESCRIBED
- ☀ PROPOSED WELL
- ⊙ EXISTING WELL
- BOTTOM HOLE
- ⊗ ABANDONED WELL
- ◆ CALCULATED POSITION



noble energy

DALEY LAND SURVEYING, INC.
PARKER, COLORADO
303.953.9841

LOCATION PICTURES

BEST-WALKER #1

SECTION 8, TOWNSHIP 9 NORTH, RANGE 58 WEST OF THE 6TH P.M.

DATE: 1/23/19



LOOKING NORTH



LOOKING WEST



LOOKING EAST



LOOKING SOUTH