



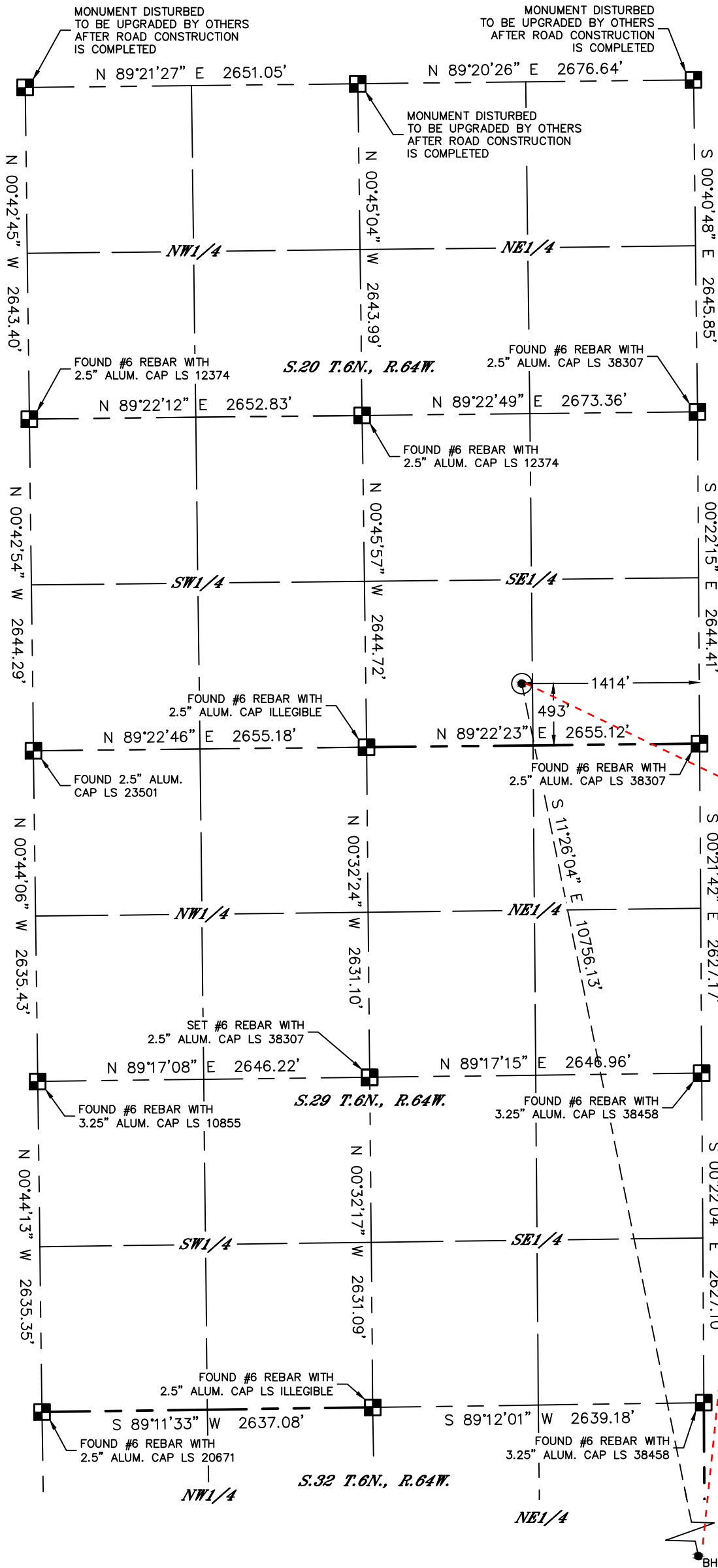
Lat40°, Inc. 6250 W. 10th Street, Unit 2, Greeley, CO 970-515-5294

APPROVED
By JacobEicher at 11:25 am, Nov 16, 2018

WELL LOCATION CERTIFICATE

RAMPART A33-780

SECTION: 20
TOWNSHIP: 6N
RANGE: 64W
6TH. P.M.
WELD COUNTY, CO

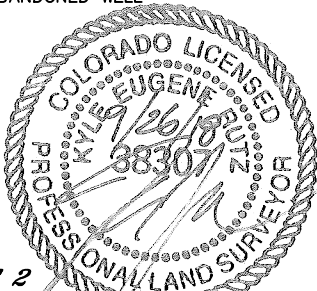


CLIENT: NOBLE ENERGY, INC.				LANDMAN: TONY BALL			
INSTRUMENT OPERATOR: SCOTT SHERARD				SURVEY DATE: 5/30/2018		SURFACE USE: PASTURE	
SHL FOOTAGE		SHL LAT°	SHL LONG°	SHL PDOP	SHL ELEV (FT.)	SHL 1/4/1/4	SHL S-T-R
493	FSL	1414	FEL	40.46558	-104.56969	2.5	4707 SWSE 20-6-64

BHL FOOTAGE		BHL LAT°	BHL LONG°	BHL S-T-R
460	FSL	636	FWL	40.43658 -104.56243 33-6-64

NOTE:
1) Bearings shown are Grid Bearings of the Colorado State Plane Coordinate System, North Zone, North American Datum 1983. The lineal dimensions as contained herein are based upon the "U.S. Survey Foot."
2) Distances to section lines measured at 90 degrees from said section lines.
3) Ground elevations are based on an observed GPS elevation (NAVD 1988 DATUM).
4) Latitude and Longitude shown are (NAD 83 DATUM).
5) IMPROVEMENTS: See LOCATION DRAWING for all visible improvements within 500' of oil and gas location.
6) This map does not represent a boundary survey.

- LEGEND
- = ALIQUOT MONUMENT AS DESCRIBED
 - = CALCULATED POSITION
 - = SURFACE HOLE LOCATION (SHL)
 - ▲ = ENTRY POINT LOCATION (EP)
 - = BOTTOM HOLE LOCATION (BHL)
 - ⊙ = EXISTING WELL
 - ⊙ = ABANDONED WELL



SHEET 1 OF 2
Kyle E. Rutz—On behalf of Lat40, Inc.
Colorado Licensed Professional Land Surveyor No. 38307
DATE: 9/26/2018
PROJECT#: 2018024

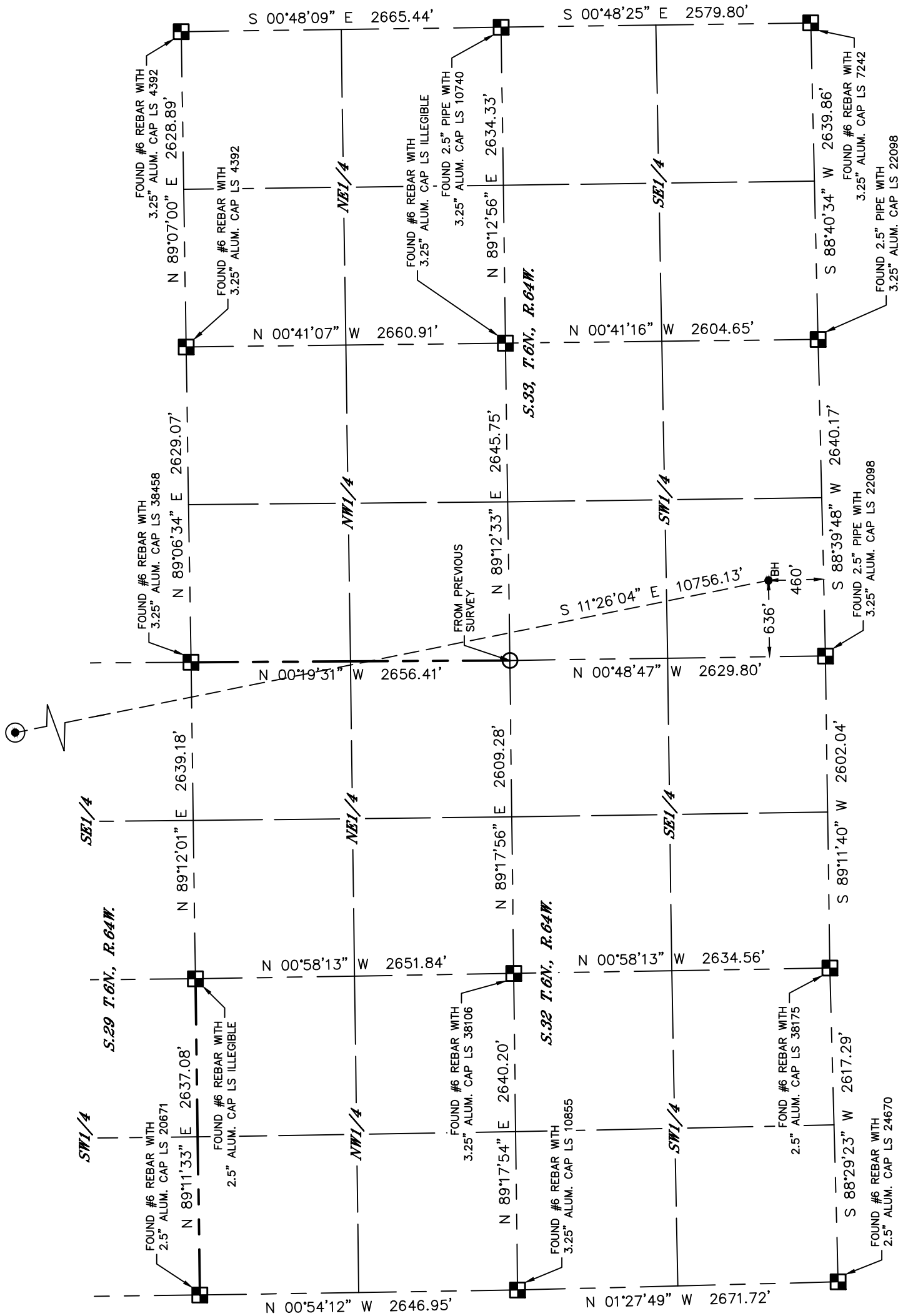


Lat40°, Inc. 6250 W. 10th Street, Unit 2, Greeley, CO 970-515-5294

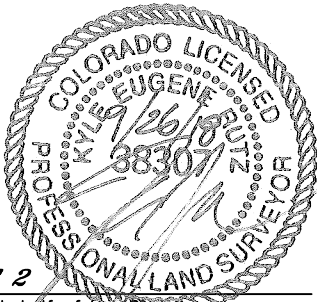
WELL LOCATION CERTIFICATE

RAMPART A33-780

SECTION: 20
TOWNSHIP: 6N
RANGE: 64W
6TH. P.M.
WELD COUNTY, CO



- LEGEND
- = ALIQUOT MONUMENT AS DESCRIBED
 - = CALCULATED POSITION
 - = SURFACE HOLE LOCATION (SHL)
 - ▲ = ENTRY POINT LOCATION (EP)
 - = BOTTOM HOLE LOCATION (BHL)
 - ⊗ = EXISTING WELL
 - ⊙ = ABANDONED WELL



SHEET 2 OF 2

Kyle E. Rutz-On behalf of Lat40, Inc.
Colorado Licensed Professional Land Surveyor No. 38307
DATE: 9/26/2018
PROJECT#: 2018024