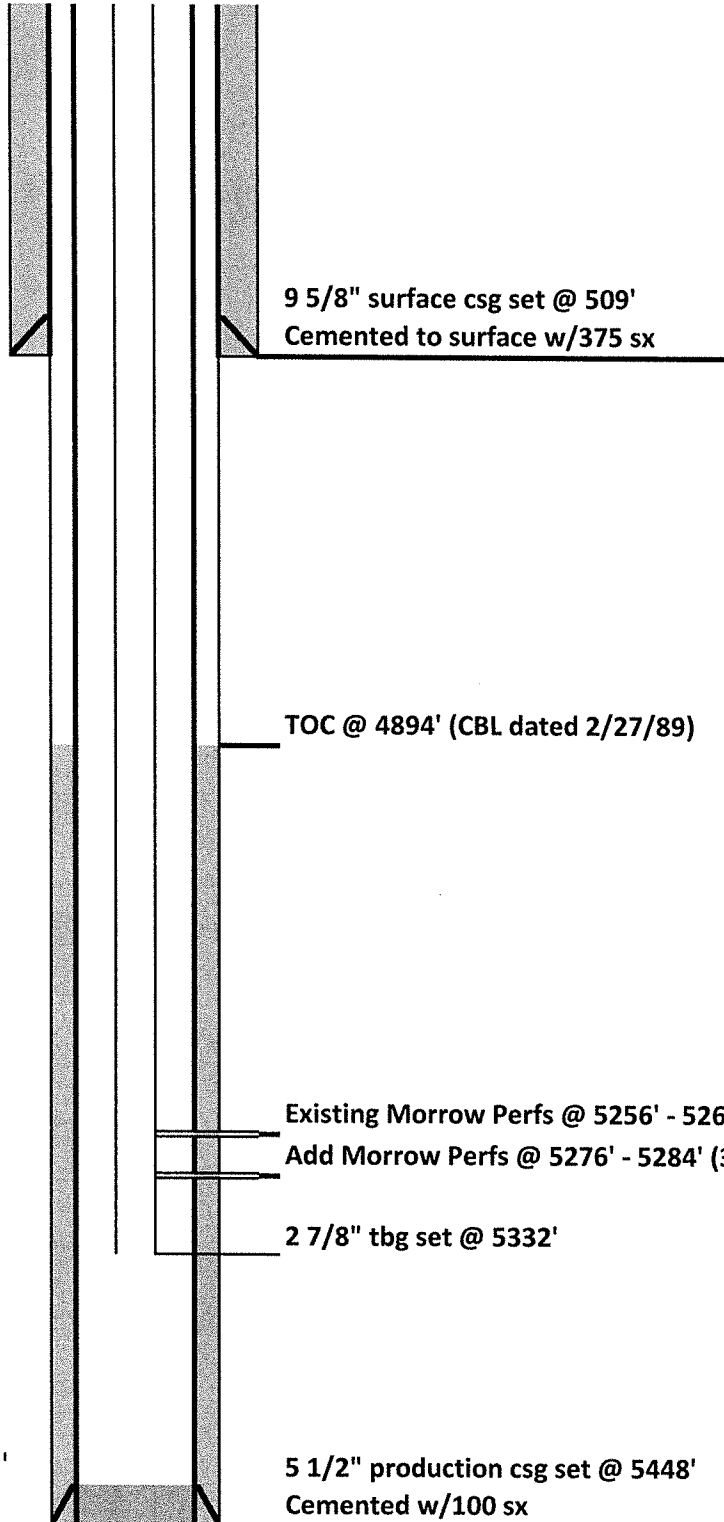




DRILLING COMPANY, INC.
WICHITA, KANSAS

Proposed Wellbore Diagram



Date:	1/31/2019
Well Name:	NWAU #29
F/K/A:	Howard "B" #1
Former Op:	MDC
Location:	2190' FSL & 2002' FWL NE/4 SW/4 6-14S-42W
County:	Cheyenne
State:	Colorado
API:	05-017-06944
GL:	4023'
KB:	4035'
Spud Date:	2/8/1989
DFP from Morrow:	3/1/1989

After perfs are added lower in the existing producing Morrow interval, gross producing interval will be 5256'-5284'.