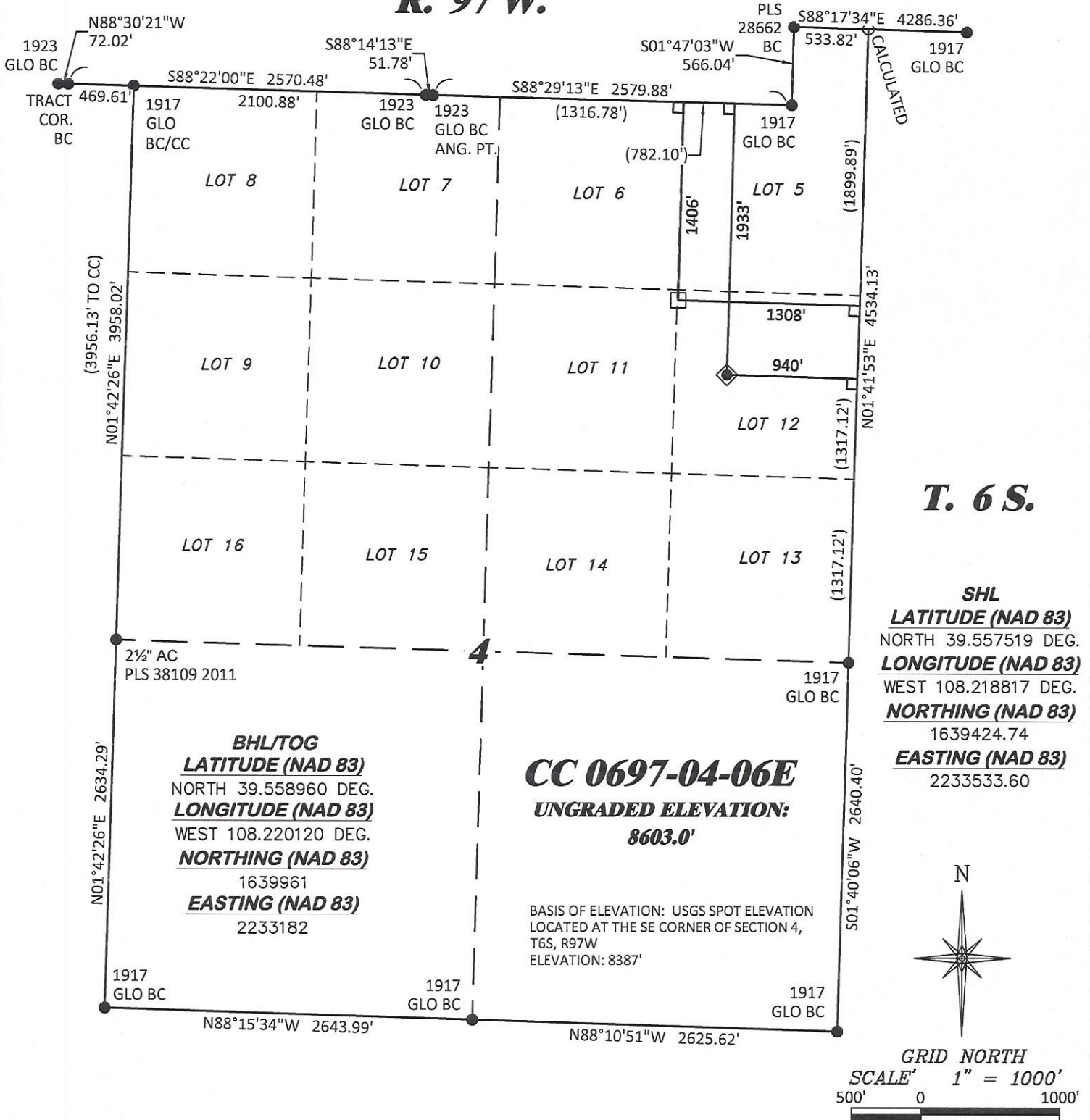


R. 97 W.



NOTES

- GPS OPERATOR T. SHERRILL OBSERVED A PDOP OF 1.3.
- ALL GPS OBSERVATIONS ARE IN COMPLIANCE WITH COGCC RULE No.215.
- EXISTING IMPROVEMENTS WITHIN 500' OF LOCATION. SEE LOC. DRAWING.
- SURROUNDING SURFACE USE IS NATIVE BRUSH, NON CROP RANGELAND.

LEGEND

- WELL LOCATION
- APPROX. BHL
- DENOTES 90° TIE
- FOUND MONUMENT
- CALCULATED

BASIS OF BEARING/DATUM

SPCS COLORADO CENTRAL NAD 27 BASED ON GPS OBSERVATIONS AND OPUS SOLUTION ON DRG CONTROL POINT "WILLIAMS" HAVING A POSITION OF: NAD83(2011)
LAT 39° 31' 35.18" NORTH
LONG 108° 12' 16.79" WEST
NAVD88 ELEVATION: 8618.14'

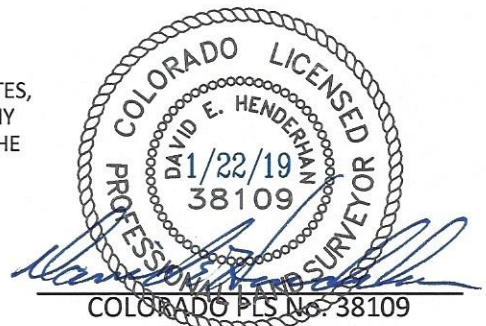
THE EAST LINE OF THE SE¼ OF SECTION 4, MONUMENTED BY BLM BC'S AND BEARING S 01°40'06" W.

SURVEYOR'S STATEMENT

I, DAVID E. HENDERHAN, AN EMPLOYEE AND AGENT ON BEHALF OF D.R. GRIFFIN & ASSOCIATES, INC. STATE THE PLAT HEREON IS A CORRECT REPRESENTATION OF A SURVEY MADE UNDER MY SUPERVISION ON THE 15th DAY OF JUNE, 2017 OF THE SHOWN CC 0697-04-06E AND THAT THE LOCATION HAS BEEN STAKED ON THE GROUND AS SHOWN ON THIS PLAT.

Notice: In accordance with Colorado State Law, any legal action based upon any defect in this survey plat must commence within three (3) years after first discovery of such defect. In no event, may any action based upon any defect in this survey plat be commenced more than ten (10) years from the date of certification shown hereon.

CC 604 41-32 PAD



DRG RIFFIN & ASSOCIATES, INC.
(307) 362-5028 1414 ELK ST., ROCK SPRINGS, WY 82901

DRAWN: 9/20/2017 - TCM

SCALE: 1" = 1000'

REVISED: 1/21/2019 - TCM

DRG JOB No. 21347

REVISED WELL SPACING

A5-04-06E

**PLAT OF DRILLING LOCATION IN
LOT 12, SECTION 4, FOR
LARAMIE ENERGY LLC**

**1933' F/NL, & 940' F/EL, SECTION 4,
T. 6 S., R. 97 W., 6TH P.M.,
GARFIELD COUNTY, COLORADO**