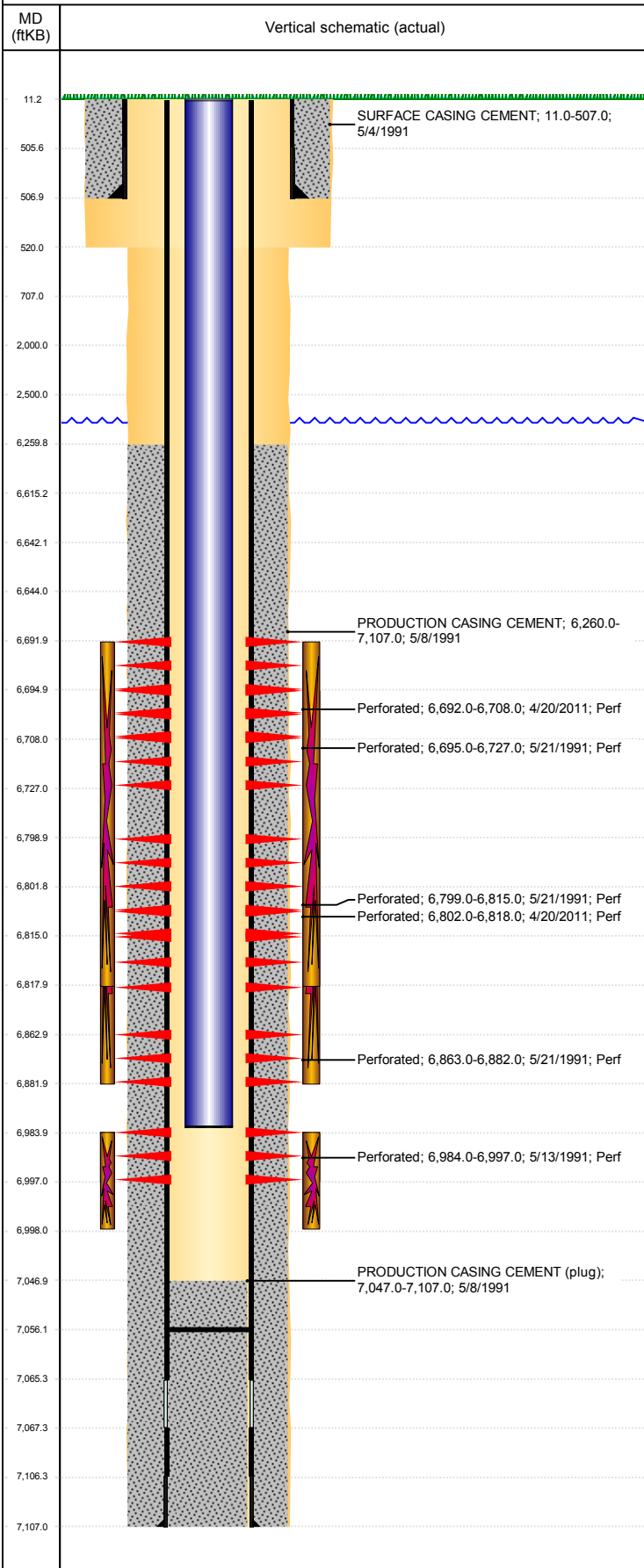


Well Name: SCHMIER 32-04A

VERTICAL, ORIGINAL HOLE, 2/7/2019 12:54:47 PM



Well Header									
API 05-123-14968		Business Unit DJ BASIN			District 15		Well Config VERTICAL		
KB - GL / MSL (ft... 11.00		Spud Date 5/3/1991		P & A Date		Well Production Status PR			SoRT No
Comment									
Surface Location (Congressional)									
Qtr 3 NW	Qtr 4 NW	Section 32	Twnshp 5	Twنش... N	Range 64	Rng E/... W	Actual Latitude (°) 40.36101783	Actual Longitude (°) -104.58071090	
Wellbore Sections									
Section Des			Size (in)			Act Top, MD (ftKB)		Act Btm, MD (ftKB)	
SURFACE			12 1/4			11		520	
PRODUCTION			7 7/8			520		7,107	
Casing Strings									
Csg Des			Run Date		OD (in)	Wt/Len (lb/ft)	Grade	Top, MD (ftKB)	MD (ftKB)
Surface			5/4/1991		8 5/8	23.00	M--50	11.0	507.0
Production			5/8/1991		4 1/2	11.60	M-75	11.1	7,107.0
Cement									
Des					Start Date		Top (ftKB)		Btm (ftKB)
SURFACE CASING CEMENT					5/4/1991		11.0		507.0
PRODUCTION CASING CEMENT					5/8/1991		6,260.0		7,107.0
Zone Statuses									
Zone Name		Status Date		Status	Fluid Type	Job			Prod Method
NIOBRARA		5/27/1991		PR		DRILLING/COMPLETION - ORIGINAL, 5/3/1991...			
NIOBRARA		5/5/2011		PR		RE-FRAC, 4/18/2011 06:00			
CODELL		7/12/2002		PR		RE-FRAC, 6/29/2002 00:00			
CODELL		4/18/2011		SI		RE-FRAC, 4/18/2011 06:00			
Perforation Data									
Linked Zone			Bnch/Stg	Entered Shot Total	Top (ftKB)		Btm (ftKB)		Date
NIOBRARA, ORIGINAL HOLE			A B C	32	6,692.00		6,708.00		4/20/2011
NIOBRARA, ORIGINAL HOLE				10	6,695.00		6,727.00		5/21/1991
NIOBRARA, ORIGINAL HOLE				10	6,799.00		6,815.00		5/21/1991
NIOBRARA, ORIGINAL HOLE				32	6,802.00		6,818.00		4/20/2011
NIOBRARA, ORIGINAL HOLE				8	6,863.00		6,882.00		5/21/1991
CODELL, ORIGINAL HOLE				44	6,984.00		6,997.00		5/13/1991
Stimulation Intervals									
Zone					Start Date		Top (ftKB)		Btm (ftKB)
NIOBRARA, ORIGINAL HOLE					5/4/2011		6,692.0		6,818.0
NIOBRARA, ORIGINAL HOLE					5/22/1991		6,695.0		6,882.0
CODELL, ORIGINAL HOLE					5/14/1991		6,984.0		6,997.0
CODELL, ORIGINAL HOLE					7/11/2002		6,984.0		6,998.0
Other In Hole									
Run Date		Des				OD (in)	Top (ftKB)		Btm (ftKB)
Logs									
Date		Type					Top, MD (ftKB)		Btm, MD (ftKB)
5/8/1991		COMPENSATED DENSITY					2,700.0		7,107.0
5/8/1991		INDUCTION					507.0		7,107.0
5/13/1991		ACOUSTIC					6,050.0		7,047.0
4/20/2011		COLLAR LOCATOR					5,850.0		6,865.0
6/8/2016		GYRO					0.0		6,900.0
Plug Back Total Depths									
Date		Type		Com					Depth (ftKB)
5/13/1991		CEMENT PLUG		DEPTH LOGGER ON CBL					7,047.0
6/7/2011		FILL		CLEAN OUT SAND PLUG W/ 228 JTS					7,056.0