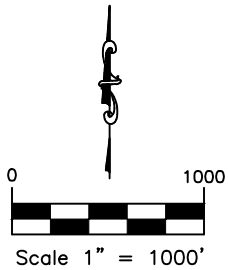
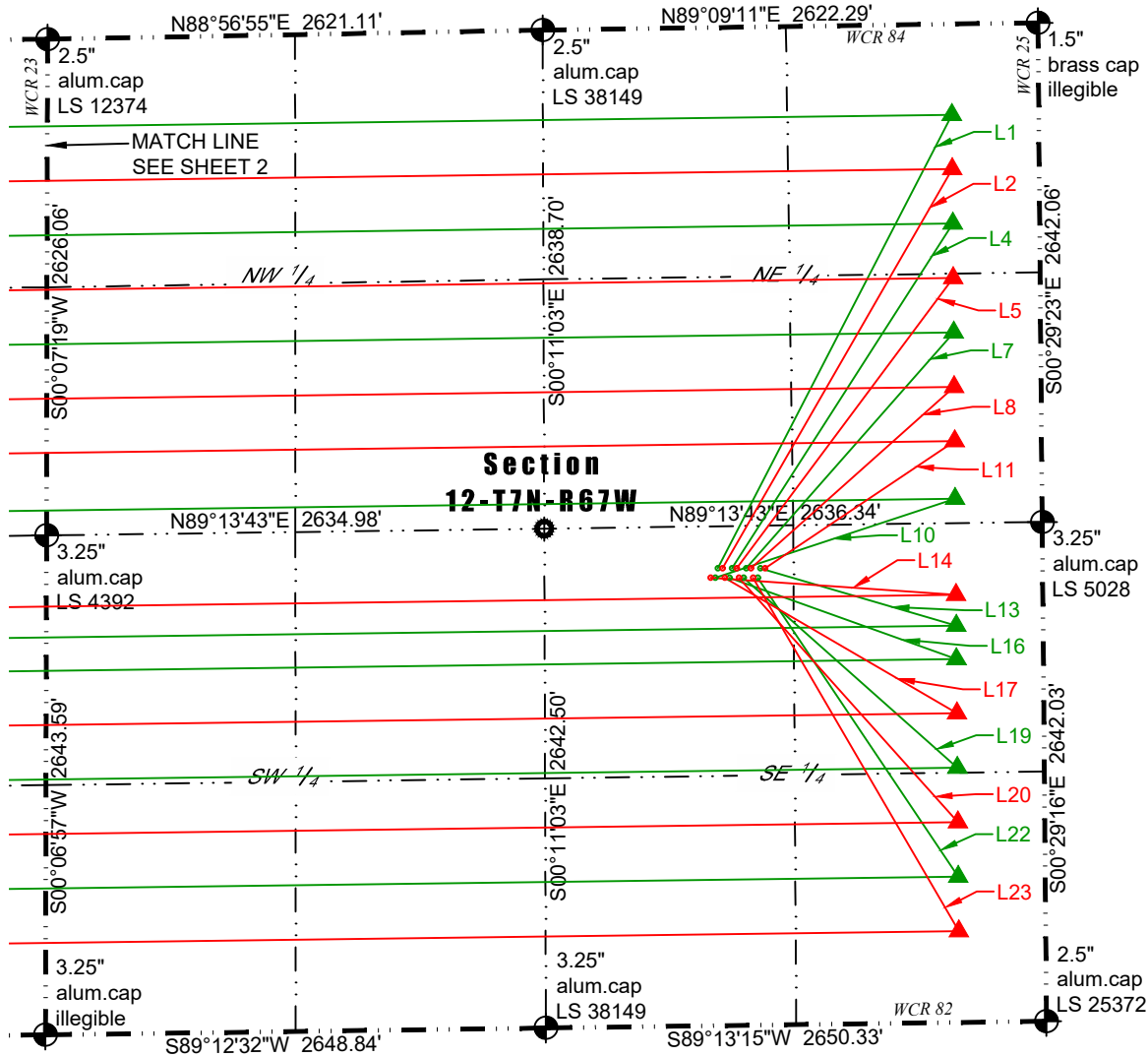




Washburn Land Surveying  
www.WashburnSurveying.com  
970-232-9645

# MULTI-WELL PLAN DRAKE 7N67W12 PAD

SECTION: 12  
TOWNSHIP: 7N  
RANGE: 67W  
6TH P.M.  
WELD COUNTY, CO



## LEGEND:

- ALIQUOT CORNER AS DESCRIBED
- CALCULATED POSITION
- SURFACE HOLE LOCATION (SHL)
- LANDING POINT LOCATION (LPL)
- BOTTOM HOLE LOCATION (BHL)

Parcel Line Table		
Line #	Length	Direction
L1	2702'	N27°18'33"E
L2	2439'	N29°56'38"E
L3	2464'	N30°57'05"E
L4	2168'	N32°39'19"E
L5	1918'	N36°44'01"E
L6	1948'	N37°54'44"E
L7	1664'	N41°21'25"E
L8	1444'	N48°15'15"E

Parcel Line Table		
Line #	Length	Direction
L9	1481'	N49°32'31"E
L10	1337'	N71°43'18"E
L11	1209'	N56°10'26"E
L12	1251'	N57°26'55"E
L13	1081'	S73°44'31"E
L14	1302'	S86°05'19"E
L15	1258'	N82°26'28"E
L16	1276'	S70°22'13"E

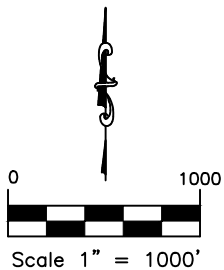
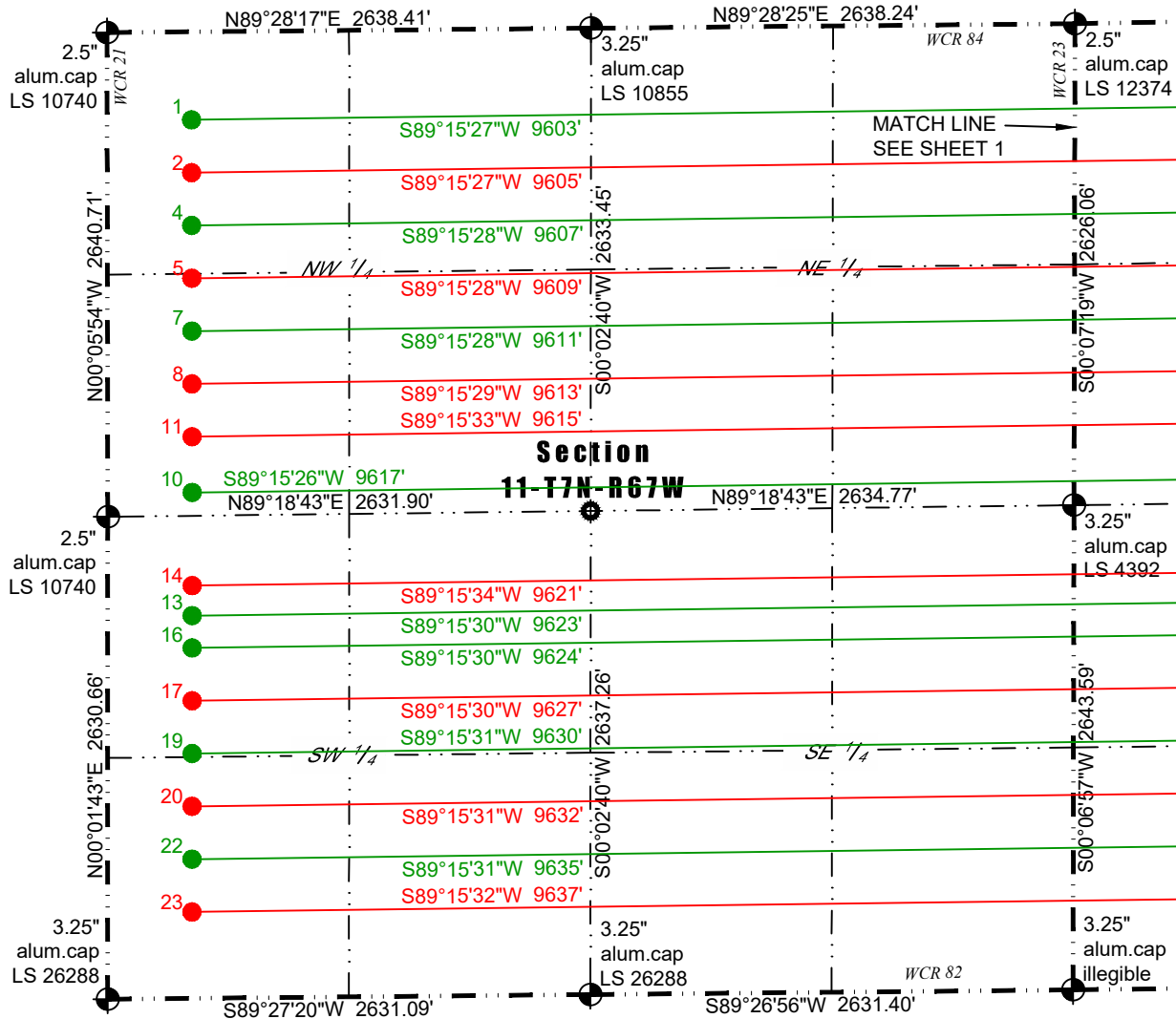
Parcel Line Table		
Line #	Length	Direction
L17	1423'	S59°45'34"E
L18	1380'	S58°42'51"E
L19	1513'	S48°24'23"E
L20	1736'	S41°53'11"E
L21	1703'	S40°38'04"E
L22	1904'	S33°53'23"E
L23	2163'	S30°14'13"E
L24	2138'	S29°04'46"E



Washburn Land Surveying  
www.WashburnSurveying.com  
970-232-9645

# MULTI-WELL PLAN DRAKE 7N67W12 PAD

SECTION: 12  
TOWNSHIP: 7N  
RANGE: 67W  
6TH P.M.  
WELD COUNTY, CO



### LEGEND:

- ALIQUOT CORNER AS DESCRIBED
- CALCULATED POSITION
- SURFACE HOLE LOCATION (SHL)
- ▲ LANDING POINT LOCATION (LPL)
- BOTTOM HOLE LOCATION (BHL)

Parcel Line Table		
Line #	Length	Direction
L1	2702'	N27°18'33\"E
L2	2439'	N29°56'38\"E
L3	2464'	N30°57'05\"E
L4	2168'	N32°39'19\"E
L5	1918'	N36°44'01\"E
L6	1948'	N37°54'44\"E
L7	1664'	N41°21'25\"E
L8	1444'	N48°15'15\"E

Parcel Line Table		
Line #	Length	Direction
L9	1481'	N49°32'31\"E
L10	1337'	N71°43'18\"E
L11	1209'	N56°10'26\"E
L12	1251'	N57°26'55\"E
L13	1081'	S73°44'31\"E
L14	1302'	S86°05'19\"E
L15	1258'	N82°26'28\"E
L16	1276'	S70°22'13\"E

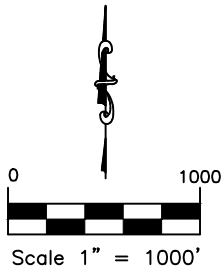
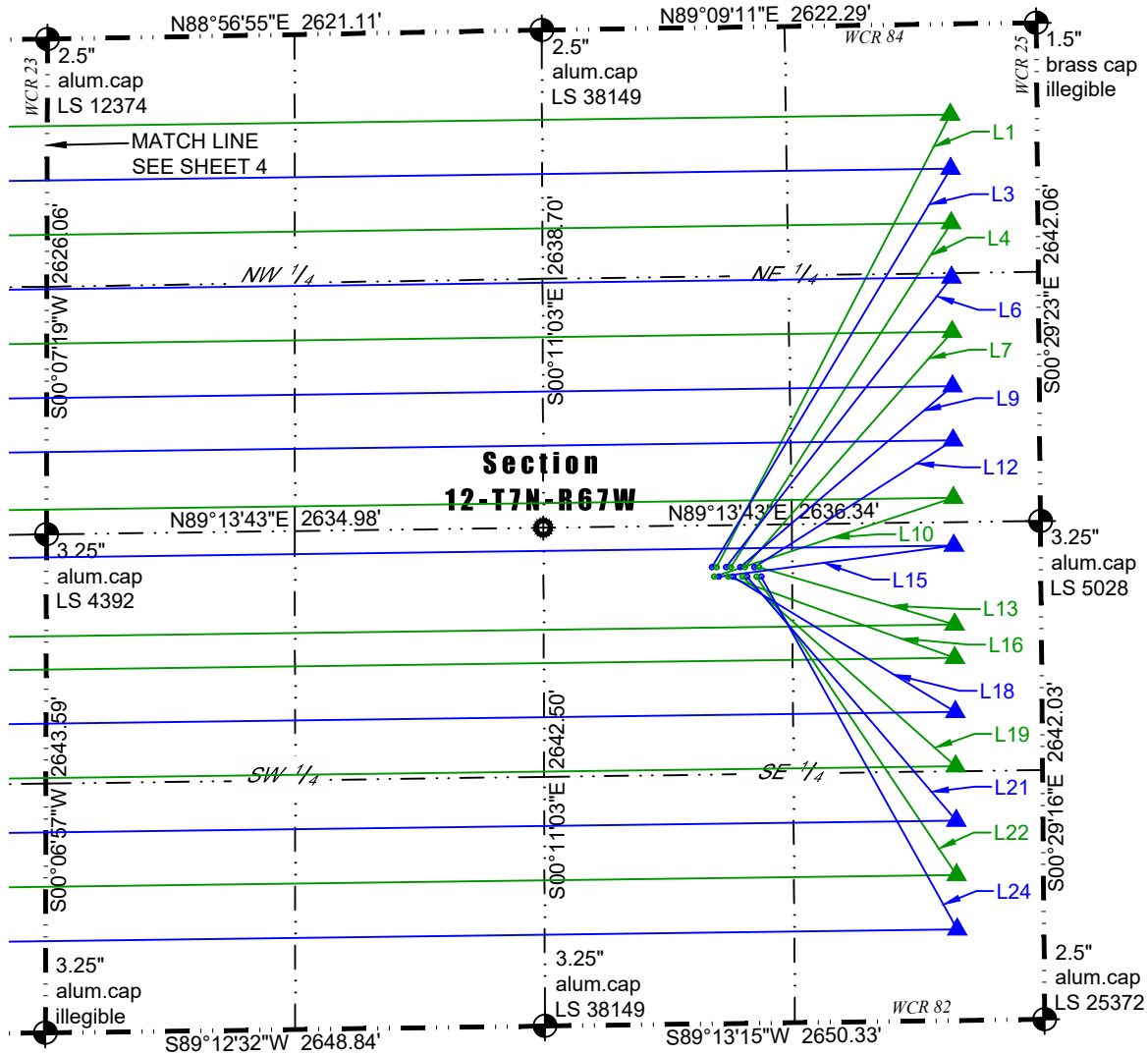
Parcel Line Table		
Line #	Length	Direction
L17	1423'	S59°45'34\"E
L18	1380'	S58°42'51\"E
L19	1513'	S48°24'23\"E
L20	1736'	S41°53'11\"E
L21	1703'	S40°38'04\"E
L22	1904'	S33°53'23\"E
L23	2163'	S30°14'13\"E
L24	2138'	S29°04'46\"E



Washburn Land Surveying  
www.WashburnSurveying.com  
970-232-9645

# MULTI-WELL PLAN DRAKE 7N67W12 PAD

SECTION: 12  
TOWNSHIP: 7N  
RANGE: 67W  
6TH P.M.  
WELD COUNTY, CO



## LEGEND:

- ALIQUOT CORNER AS DESCRIBED
- CALCULATED POSITION
- SURFACE HOLE LOCATION (SHL)
- LANDING POINT LOCATION (LPL)
- BOTTOM HOLE LOCATION (BHL)

Parcel Line Table		
Line #	Length	Direction
L1	2702'	N27°18'33"E
L2	2439'	N29°56'38"E
L3	2464'	N30°57'05"E
L4	2168'	N32°39'19"E
L5	1918'	N36°44'01"E
L6	1948'	N37°54'44"E
L7	1664'	N41°21'25"E
L8	1444'	N48°15'15"E

Parcel Line Table		
Line #	Length	Direction
L9	1481'	N49°32'31"E
L10	1337'	N71°43'18"E
L11	1209'	N56°10'26"E
L12	1251'	N57°26'55"E
L13	1081'	S73°44'31"E
L14	1302'	S86°05'19"E
L15	1258'	N82°26'28"E
L16	1276'	S70°22'13"E

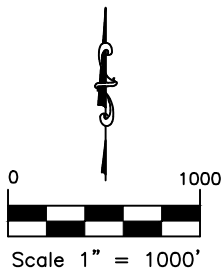
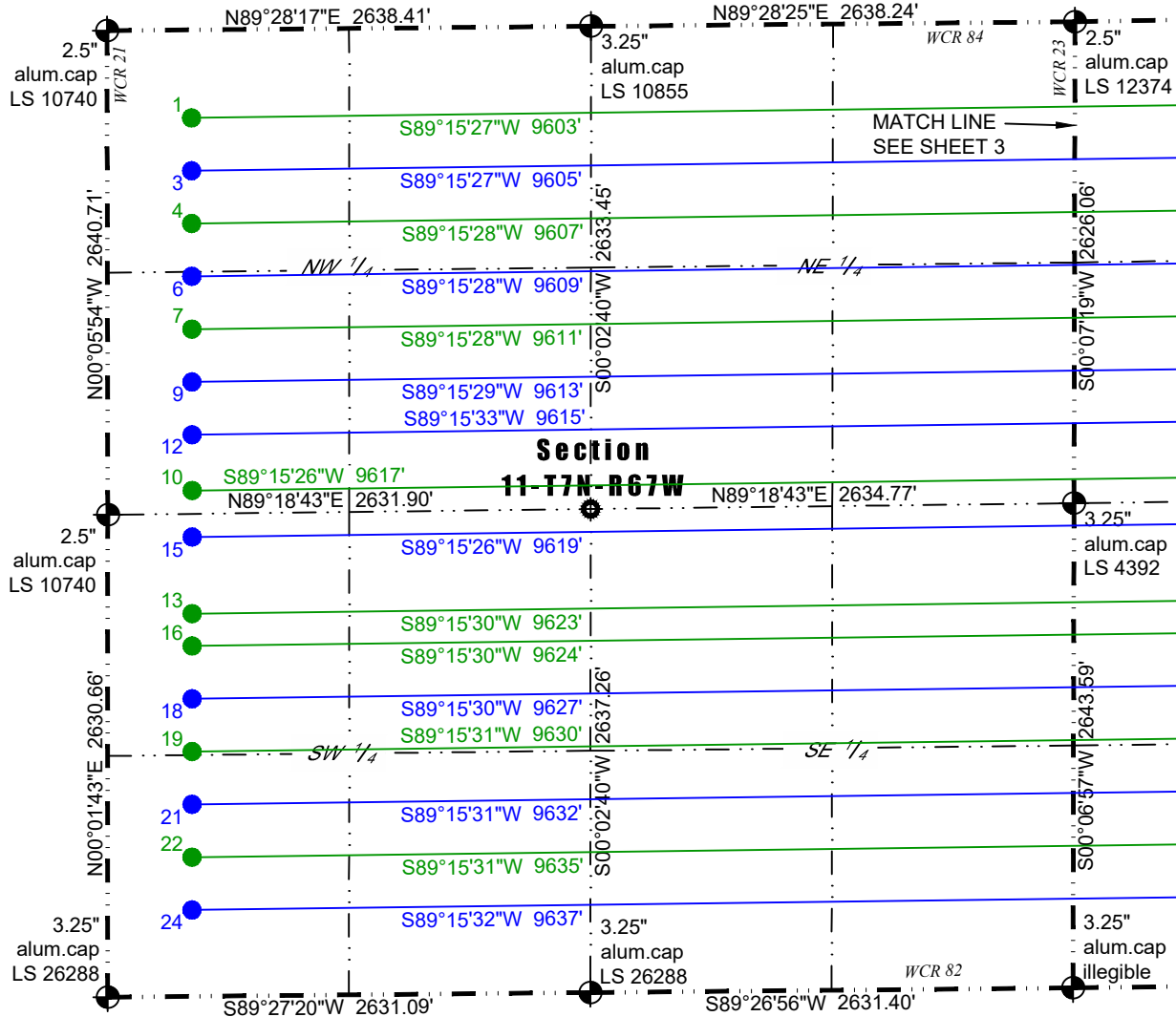
Parcel Line Table		
Line #	Length	Direction
L17	1423'	S59°45'34"E
L18	1380'	S58°42'51"E
L19	1513'	S48°24'23"E
L20	1736'	S41°53'11"E
L21	1703'	S40°38'04"E
L22	1904'	S33°53'23"E
L23	2163'	S30°14'13"E
L24	2138'	S29°04'46"E



Washburn Land Surveying  
www.WashburnSurveying.com  
970-232-9645

# MULTI-WELL PLAN DRAKE 7N67W12 PAD

SECTION: 12  
TOWNSHIP: 7N  
RANGE: 67W  
6TH P.M.  
WELD COUNTY, CO



## LEGEND:

- ALIQUOT CORNER AS DESCRIBED
- CALCULATED POSITION
- SURFACE HOLE LOCATION (SHL)
- LANDING POINT LOCATION (LPL)
- BOTTOM HOLE LOCATION (BHL)

Parcel Line Table		
Line #	Length	Direction
L1	2702'	N27°18'33"E
L2	2439'	N29°56'38"E
L3	2464'	N30°57'05"E
L4	2168'	N32°39'19"E
L5	1918'	N36°44'01"E
L6	1948'	N37°54'44"E
L7	1664'	N41°21'25"E
L8	1444'	N48°15'15"E

Parcel Line Table		
Line #	Length	Direction
L9	1481'	N49°32'31"E
L10	1337'	N71°43'18"E
L11	1209'	N56°10'26"E
L12	1251'	N57°26'55"E
L13	1081'	S73°44'31"E
L14	1302'	S86°05'19"E
L15	1258'	N82°26'28"E
L16	1276'	S70°22'13"E

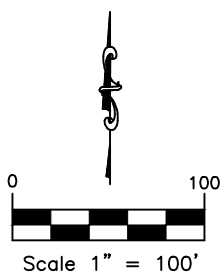
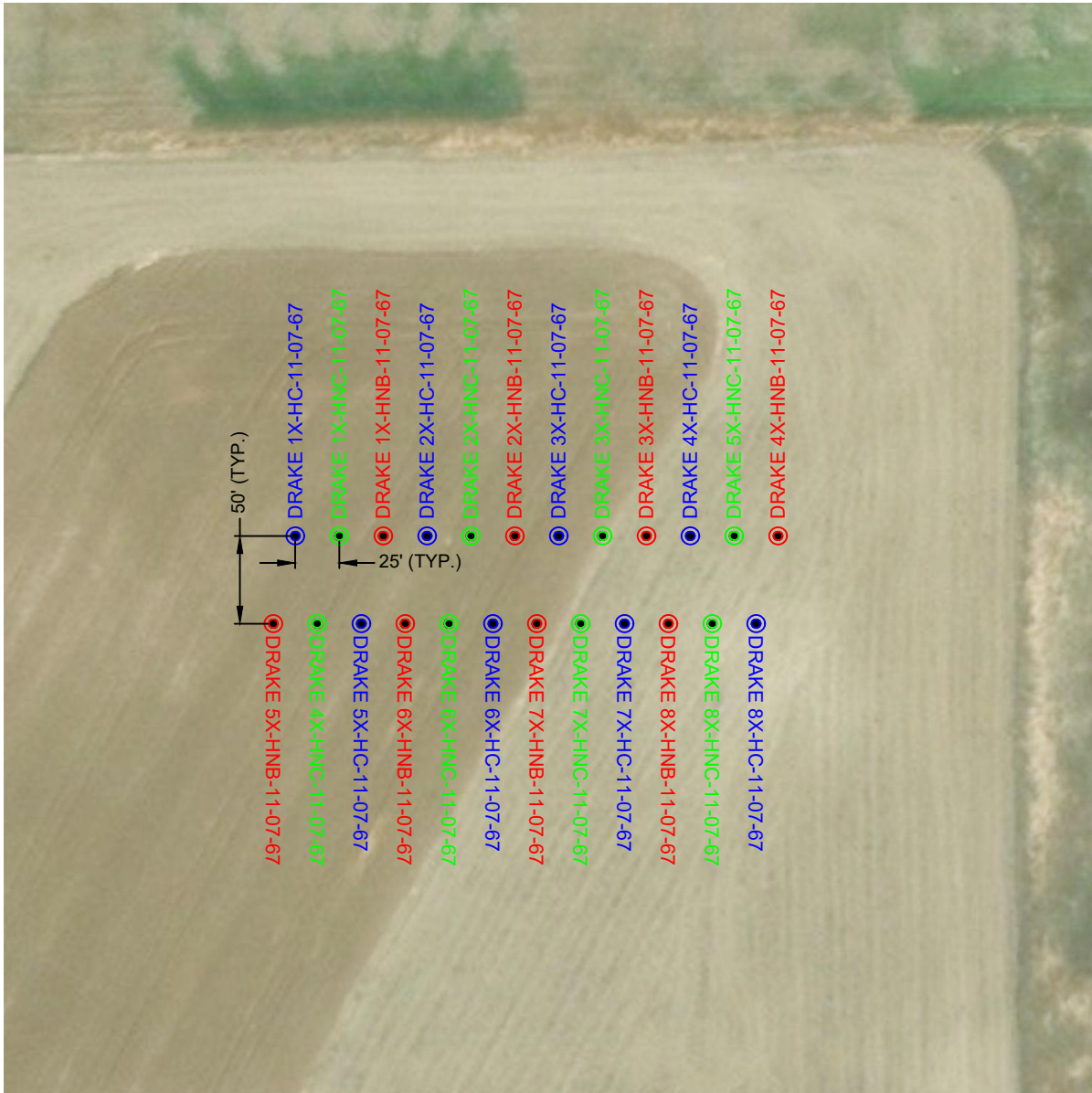
Parcel Line Table		
Line #	Length	Direction
L17	1423'	S59°45'34"E
L18	1380'	S58°42'51"E
L19	1513'	S48°24'23"E
L20	1736'	S41°53'11"E
L21	1703'	S40°38'04"E
L22	1904'	S33°53'23"E
L23	2163'	S30°14'13"E
L24	2138'	S29°04'46"E



Washburn Land Surveying  
www.WashburnSurveying.com  
970-232-9645

# MULTI-WELL PLAN DRAKE 7N67W12 PAD

SECTION: 12  
TOWNSHIP: 7N  
RANGE: 67W  
6TH P.M.  
WELD COUNTY, CO





Washburn Land Surveying  
www.WashburnSurveying.com  
970-232-9645

## MULTI-WELL PLAN DRAKE 7N67W12 PAD

SECTION: 12  
TOWNSHIP: 7N  
RANGE: 67W  
6TH P.M.  
WELD COUNTY, CO

ID	WELL	SHL LAT	SHL LONG	SHL FOOTAGES				
1	DRAKE 1X-HNC-11-07-67	40.588175	-104.838003	2419	FSL	1720	FEL	OF SECTION 12
2	DRAKE 1X-HNB-11-07-67	40.588174	-104.837913	2419	FSL	1695	FEL	OF SECTION 12
3	DRAKE 1X-HC-11-07-67	40.588176	-104.838093	2420	FSL	1745	FEL	OF SECTION 12
4	DRAKE 2X-HNC-11-07-67	40.588173	-104.837733	2418	FSL	1645	FEL	OF SECTION 12
5	DRAKE 2X-HNB-11-07-67	40.588173	-104.837643	2418	FSL	1620	FEL	OF SECTION 12
6	DRAKE 2X-HC-11-07-67	40.588174	-104.837823	2419	FSL	1670	FEL	OF SECTION 12
7	DRAKE 3X-HNC-11-07-67	40.588172	-104.837463	2417	FSL	1570	FEL	OF SECTION 12
8	DRAKE 3X-HNB-11-07-67	40.588171	-104.837373	2417	FSL	1545	FEL	OF SECTION 12
9	DRAKE 3X-HC-11-07-67	40.588172	-104.837553	2418	FSL	1595	FEL	OF SECTION 12
10	DRAKE 4X-HNC-11-07-67	40.588038	-104.838050	2369	FSL	1733	FEL	OF SECTION 12
11	DRAKE 4X-HNB-11-07-67	40.588170	-104.837103	2416	FSL	1470	FEL	OF SECTION 12
12	DRAKE 4X-HC-11-07-67	40.588171	-104.837283	2417	FSL	1520	FEL	OF SECTION 12
13	DRAKE 5X-HNC-11-07-67	40.588170	-104.837193	2416	FSL	1495	FEL	OF SECTION 12
14	DRAKE 5X-HNB-11-07-67	40.588039	-104.838140	2370	FSL	1758	FEL	OF SECTION 12
15	DRAKE 5X-HC-11-07-67	40.588037	-104.837960	2369	FSL	1708	FEL	OF SECTION 12
16	DRAKE 6X-HNC-11-07-67	40.588036	-104.837780	2368	FSL	1658	FEL	OF SECTION 12
17	DRAKE 6X-HNB-11-07-67	40.588037	-104.837870	2369	FSL	1683	FEL	OF SECTION 12
18	DRAKE 6X-HC-11-07-67	40.588036	-104.837690	2368	FSL	1633	FEL	OF SECTION 12
19	DRAKE 7X-HNC-11-07-67	40.588035	-104.837510	2367	FSL	1583	FEL	OF SECTION 12
20	DRAKE 7X-HNB-11-07-67	40.588035	-104.837600	2368	FSL	1608	FEL	OF SECTION 12
21	DRAKE 7X-HC-11-07-67	40.588034	-104.837420	2367	FSL	1558	FEL	OF SECTION 12
22	DRAKE 8X-HNC-11-07-67	40.588033	-104.837240	2366	FSL	1508	FEL	OF SECTION 12
23	DRAKE 8X-HNB-11-07-67	40.588034	-104.837330	2367	FSL	1533	FEL	OF SECTION 12
24	DRAKE 8X-HC-11-07-67	40.588033	-104.837150	2366	FSL	1483	FEL	OF SECTION 12
ID	WELL	LPL LAT	LPL LONG	LPL FOOTAGES				
1	DRAKE 1X-HNC-11-07-67	40.594740	-104.833474	480	FNL	460	FEL	OF SECTION 12
2	DRAKE 1X-HNB-11-07-67	40.593950	-104.833473	768	FNL	460	FEL	OF SECTION 12
3	DRAKE 1X-HC-11-07-67	40.593950	-104.833473	768	FNL	460	FEL	OF SECTION 12
4	DRAKE 2X-HNC-11-07-67	40.593159	-104.833472	1056	FNL	460	FEL	OF SECTION 12
5	DRAKE 2X-HNB-11-07-67	40.592369	-104.833471	1344	FNL	460	FEL	OF SECTION 12
6	DRAKE 2X-HC-11-07-67	40.592369	-104.833471	1344	FNL	460	FEL	OF SECTION 12
7	DRAKE 3X-HNC-11-07-67	40.591578	-104.833470	1632	FNL	460	FEL	OF SECTION 12
8	DRAKE 3X-HNB-11-07-67	40.590788	-104.833469	1920	FNL	460	FEL	OF SECTION 12
9	DRAKE 3X-HC-11-07-67	40.590788	-104.833469	1920	FNL	460	FEL	OF SECTION 12
10	DRAKE 4X-HNC-11-07-67	40.589163	-104.833467	2512	FNL	460	FEL	OF SECTION 12
11	DRAKE 4X-HNB-11-07-67	40.589997	-104.833468	2208	FNL	460	FEL	OF SECTION 12
12	DRAKE 4X-HC-11-07-67	40.589997	-104.833468	2208	FNL	460	FEL	OF SECTION 12
13	DRAKE 5X-HNC-11-07-67	40.587318	-104.833464	2099	FSL	460	FEL	OF SECTION 12
14	DRAKE 5X-HNB-11-07-67	40.587768	-104.833465	2263	FSL	460	FEL	OF SECTION 12
15	DRAKE 5X-HC-11-07-67	40.588466	-104.833466	2518	FSL	460	FEL	OF SECTION 12
16	DRAKE 6X-HNC-11-07-67	40.586835	-104.833464	1923	FSL	460	FEL	OF SECTION 12
17	DRAKE 6X-HNB-11-07-67	40.586045	-104.833463	1635	FSL	460	FEL	OF SECTION 12
18	DRAKE 6X-HC-11-07-67	40.586045	-104.833463	1635	FSL	460	FEL	OF SECTION 12
19	DRAKE 7X-HNC-11-07-67	40.585254	-104.833462	1347	FSL	460	FEL	OF SECTION 12
20	DRAKE 7X-HNB-11-07-67	40.584463	-104.833461	1059	FSL	460	FEL	OF SECTION 12
21	DRAKE 7X-HC-11-07-67	40.584463	-104.833461	1059	FSL	460	FEL	OF SECTION 12
22	DRAKE 8X-HNC-11-07-67	40.583673	-104.833460	771	FSL	460	FEL	OF SECTION 12
23	DRAKE 8X-HNB-11-07-67	40.582882	-104.833459	483	FSL	460	FEL	OF SECTION 12
24	DRAKE 8X-HC-11-07-67	40.582882	-104.833459	483	FSL	460	FEL	OF SECTION 12

Date: 1/17/2019  
SHEET 6 OF 7





Washburn Land Surveying  
www.WashburnSurveying.com  
970-232-9645

## MULTI-WELL PLAN DRAKE 7N67W12 PAD

SECTION: 12  
TOWNSHIP: 7N  
RANGE: 67W  
6TH P.M.  
WELD COUNTY, CO

ID	WELL	BHL LAT	BHL LONG	BHL FOOTAGES				
1	DRAKE 1X-HNC-11-07-67	40.594592	-104.868054	480	FNL	460	FWL	OF SECTION 11
2	DRAKE 1X-HNB-11-07-67	40.593801	-104.868059	768	FNL	460	FWL	OF SECTION 11
3	DRAKE 1X-HC-11-07-67	40.593801	-104.868059	768	FNL	460	FWL	OF SECTION 11
4	DRAKE 2X-HNC-11-07-67	40.593011	-104.868065	1056	FNL	460	FWL	OF SECTION 11
5	DRAKE 2X-HNB-11-07-67	40.592220	-104.868071	1344	FNL	460	FWL	OF SECTION 11
6	DRAKE 2X-HC-11-07-67	40.592220	-104.868071	1344	FNL	460	FWL	OF SECTION 11
7	DRAKE 3X-HNC-11-07-67	40.591430	-104.868076	1632	FNL	460	FWL	OF SECTION 11
8	DRAKE 3X-HNB-11-07-67	40.590639	-104.868082	1920	FNL	460	FWL	OF SECTION 11
9	DRAKE 3X-HC-11-07-67	40.590639	-104.868082	1920	FNL	460	FWL	OF SECTION 11
10	DRAKE 4X-HNC-11-07-67	40.589014	-104.868093	2512	FNL	460	FWL	OF SECTION 11
11	DRAKE 4X-HNB-11-07-67	40.589849	-104.868087	2208	FNL	460	FWL	OF SECTION 11
12	DRAKE 4X-HC-11-07-67	40.589849	-104.868087	2208	FNL	460	FWL	OF SECTION 11
13	DRAKE 5X-HNC-11-07-67	40.587170	-104.868111	2087	FSL	460	FWL	OF SECTION 11
14	DRAKE 5X-HNB-11-07-67	40.587620	-104.868106	2251	FSL	460	FWL	OF SECTION 11
15	DRAKE 5X-HC-11-07-67	40.588317	-104.868099	2505	FSL	460	FWL	OF SECTION 11
16	DRAKE 6X-HNC-11-07-67	40.586687	-104.868116	1911	FSL	460	FWL	OF SECTION 11
17	DRAKE 6X-HNB-11-07-67	40.585896	-104.868123	1623	FSL	460	FWL	OF SECTION 11
18	DRAKE 6X-HC-11-07-67	40.585896	-104.868123	1623	FSL	460	FWL	OF SECTION 11
19	DRAKE 7X-HNC-11-07-67	40.585105	-104.868131	1335	FSL	460	FWL	OF SECTION 11
20	DRAKE 7X-HNB-11-07-67	40.584315	-104.868139	1047	FSL	460	FWL	OF SECTION 11
21	DRAKE 7X-HC-11-07-67	40.584315	-104.868139	1047	FSL	460	FWL	OF SECTION 11
22	DRAKE 8X-HNC-11-07-67	40.583524	-104.868147	759	FSL	460	FWL	OF SECTION 11
23	DRAKE 8X-HNB-11-07-67	40.582734	-104.868155	471	FSL	460	FWL	OF SECTION 11
24	DRAKE 8X-HC-11-07-67	40.582734	-104.868155	471	FSL	460	FWL	OF SECTION 11