

Inspection Photos

1/31/2019

Operator: VERDAD RESOURCES LLC - 10651

Location ID: 425541

Inspection Doc. Number: 682504467

Weld County, CO

Aaron Trujillo
NE Reclamation Specialist
COGCC

Inspection Photos
Operator: VERDAD RESOURCES LLC - 10651
Location ID: 425541

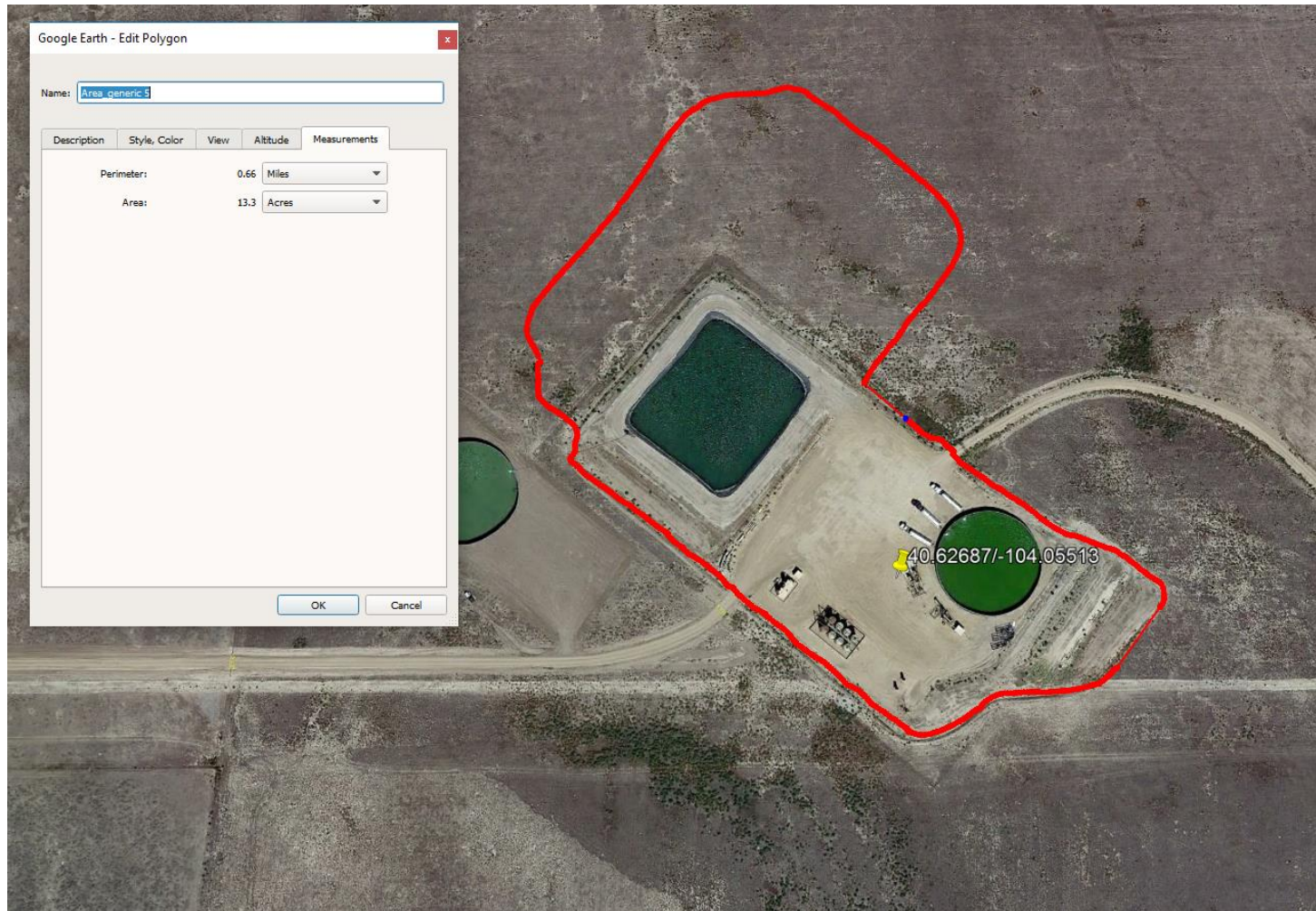


Photo 1: 2013 Google earth aerial imagery. Photo shows disturbance area for the location. A disturbance area of 13.3 acres was measured using a Trimble Juno 3B handheld device. This exceeds the permitted disturbance area of 4.5 acres. Note: pit has been expanded to the northeast since aerial photo. See photo 6 and doc. #400581604 for additional details.



Photo 2: Photo taken from the southeast end of pit #431409, facing west. Location received an approved 502.b variance to delay interim reclamation of the location for three (3) years until 12/31/2018. Photos 2- 4 shows pit has not been closed/reclaimed.



Photo 3: See comments under photo 2.



Photo 4: See comments under photo 2.

Inspection Photos
Operator: VERDAD RESOURCES LLC - 10651
Location ID: 425541



Photo 5: Photo taken from the south end of the location, facing west. Photo provides and overview of the location. Photo also shows interim reclamation has not been conducted in accordance with COGCC rule 1003.



Photo 6: Photo taken from the south end of the location, facing northwest. Photo provides an overview of the location. Photo also shows interim reclamation has not been conducted in accordance with COGCC rule 1003.



Photo 7: Photo taken from the southeast corner of the location, facing north. Photo shows interim reclamation has not been conducted in accordance with COGCC rule 1003



Photo 8: Photo taken from the south end of the location. Russian thistle (*Salsola tragus*) weed establishment along portions of the well pad perimeter and weed debris along the perimeter of the location. Russian thistle is a troublesome annual nonnative weed that easily breaks off at the stem and becomes a tumbleweed.



Photo 9: See comments under photo 8



Photo 10: Photo taken from the access road on the east end of the location. Photo shows culvert has filled with sediment and no longer in proper functioning condition.