

Caerus Oil & Gas LLC

NPR 004 696 PAD  
LOT 9, SECTION 4, T6S, R96W, 6th P.M.  
GARFIELD COUNTY, COLORADO

SURVEYED BY	DAYTON SLAUGH	10-01-18	SCALE
DRAWN BY	T.S.	01-15-19	1" = 80'
MULTI-WELL PLAN			FIGURE #6



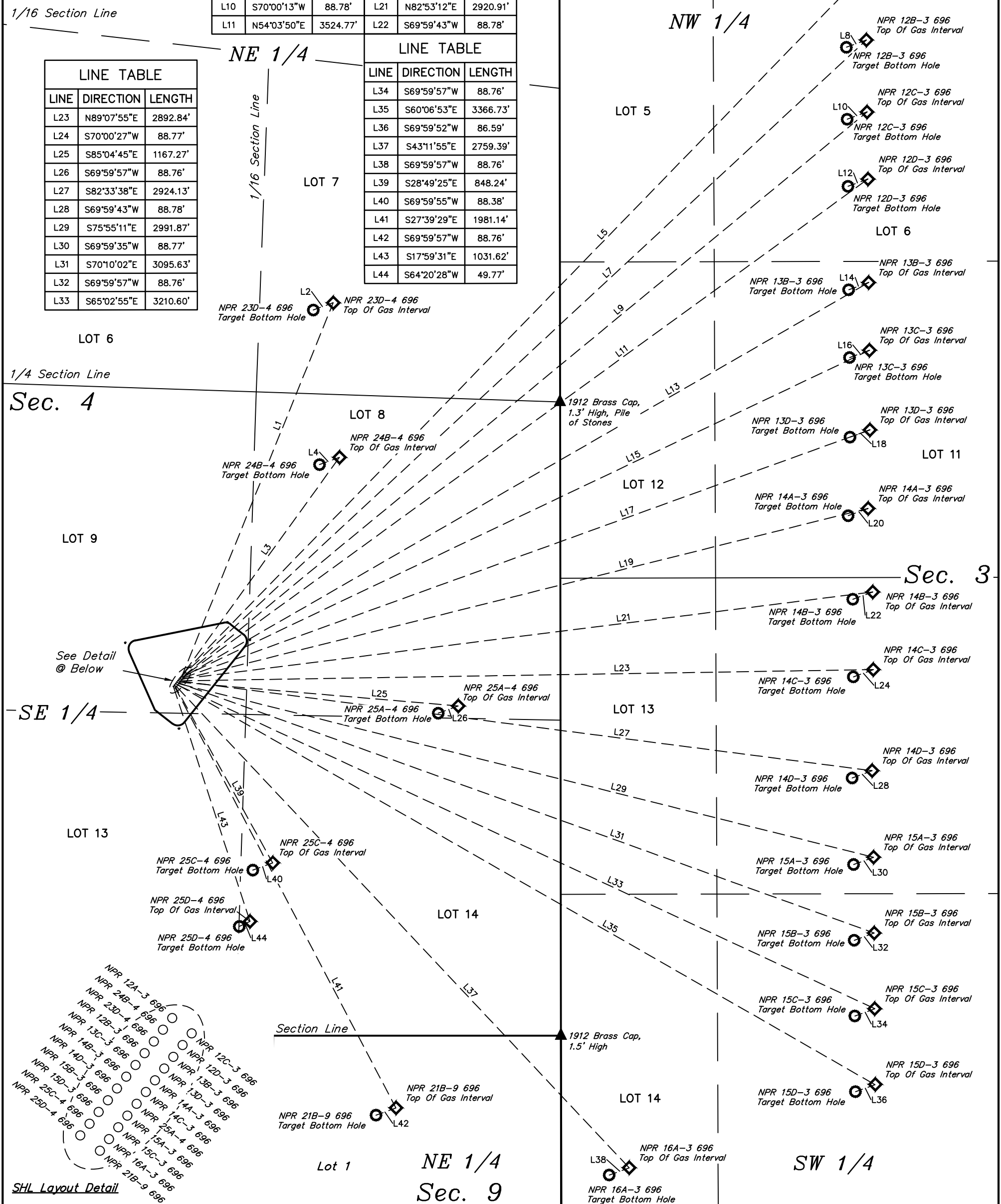
UELS, LLC  
Corporate Office \* 85 South 200 East  
Vernal, UT 84078 \* (435) 789-1017



LINE TABLE			LINE TABLE		
LINE	DIRECTION	LENGTH	LINE	DIRECTION	LENGTH
L1	N22°08'07"E	1677.86'	L12	S69°59'43"W	88.78'
L2	S70°00'05"W	88.77'	L13	N60°08'17"E	3298.92'
L3	N35°52'24"E	1114.12'	L14	S70°00'05"W	88.77'
L4	S70°00'27"W	88.77'	L15	N64°38'50"E	3188.26'
L5	N44°15'09"E	4080.53'	L16	S69°59'43"W	88.78'
L6	S69°59'51"W	88.79'	L17	N70°12'14"E	3050.59'
L7	N47°10'55"E	3905.81'	L18	S70°00'05"W	88.77'
L8	S69°59'51"W	88.79'	L19	N76°04'18"E	2953.80'
L9	N50°32'14"E	3686.26'	L20	S69°59'43"W	88.78'
L10	S70°00'13"W	88.78'	L21	N82°53'12"E	2920.91'
L11	N54°03'50"E	3524.77'	L22	S69°59'43"W	88.78'

LINE TABLE		
LINE	DIRECTION	LENGTH
L23	N89°07'55"E	2892.84'
L24	S70°00'27"W	88.77'
L25	S85°04'45"E	1167.27'
L26	S69°59'57"W	88.76'
L27	S82°33'38"E	2924.13'
L28	S69°59'43"W	88.78'
L29	S75°55'11"E	2991.87'
L30	S69°59'35"W	88.77'
L31	S70°10'02"E	3095.63'
L32	S69°59'57"W	88.76'
L33	S65°02'55"E	3210.60'

LINE TABLE		
LINE	DIRECTION	LENGTH
L34	S69°59'57"W	88.76'
L35	S60°06'53"E	3366.73'
L36	S69°59'52"W	86.59'
L37	S43°11'55"E	2759.39'
L38	S69°59'57"W	88.76'
L39	S28°49'25"E	848.24'
L40	S69°59'55"W	88.38'
L41	S27°39'29"E	1981.14'
L42	S69°59'57"W	88.76'
L43	S17°59'31"E	1031.62'
L44	S64°20'28"W	49.77'

**Caerus Oil & Gas LLC**

**NPR 004 696 PAD**  
**LOT 9, SECTION 4, T6S, R96W, 6th P.M.**  
**GARFIELD COUNTY, COLORADO**

<b>SURVEYED BY</b>	DAYTON SLAUGH	10-01-18	<b>SCALE</b>
<b>DRAWN BY</b>	T.S.	01-15-19	1" = 400'
<b>TARGET BOTTOM HOLE DRAWING</b>		<b>FIGURE #6A</b>	



**UELS, LLC**  
**Corporate Office \* 85 South 200 East**  
**Vernal, UT 84078 \* (435) 789-1017**