

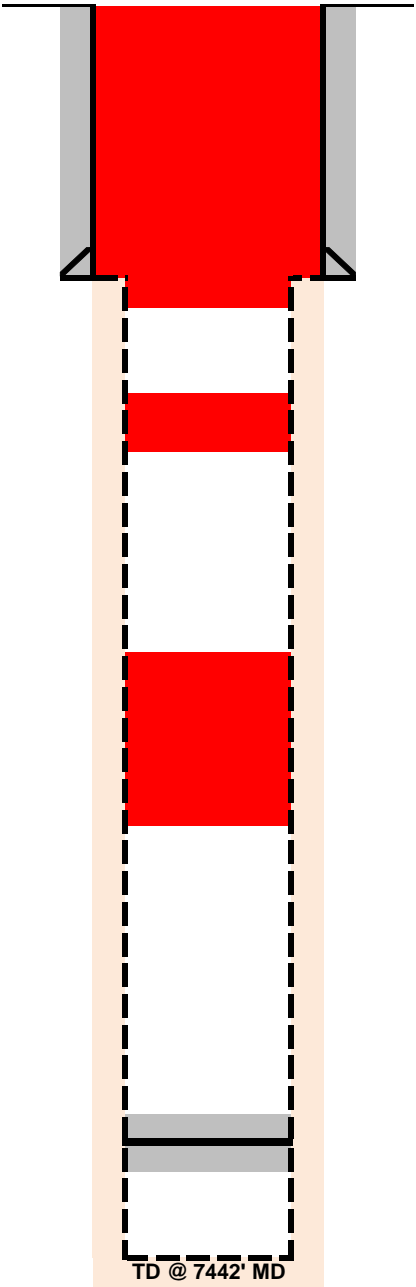
WELLBORE DIAGRAM
Sunset Plugging Equipment Inc.
Norton AJ-4

SHL: 1994' FNL, 664' FEL Sec. 33-T7N-R66W
Vertical Well
Lat/Long: 40.533093, -104.776693
Weld County, CO
API 05-123-11763

Current as Re-Plugged

NOT TO SCALE

TOPS (MD)



8-5/8" set @ 303' (12-1/4" OH)
Surface Plug @ 360' of 161 sks

TOC @ 708', tagged plug
Balanced Plug @ 881' of 120 sks

TOC @ 2988'
tagged plug

Balanced Plug @ 3260' of 120 sks

CIBP @ 6900

7-7/8" OH to TD