

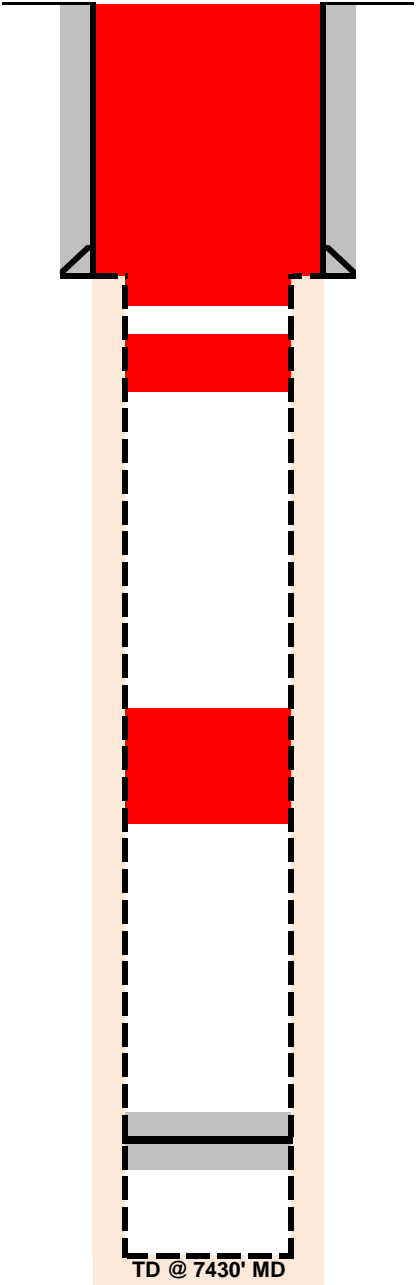
**WELLBORE DIAGRAM**  
**Sunset Plugging Equipment Inc.**  
**Norton AJ-2**

SHL: 664' FNL, 1992' FEL Sec. 33-T7N-R66W  
Vertical Well  
Lat/Long: 40.536693, -104.781303  
Weld County, CO  
API 05-123-11727

Current as Re-Plugged

**NOT TO SCALE**

TOPS (MD)



8-5/8" set @ 305' (12-1/4" OH)  
Surface Plug @ 390' of 166 sks  
TOC @ 524', plug tagged  
Balanced Plug @ 653' of 120 sks

TOC @ 2972'  
plug tagged  
Balanced Plug @ 3252' of 60 sks

CIBP @ 6900

7-7/8" OH to TD

TD @ 7430' MD