

**1001 17<sup>th</sup> Street  
Suite 2000  
Denver, Colorado  
80202**



**Natalie Svendsen  
Regulatory Analyst  
Tel: 720.595.2194  
E-mail:  
nsvendsen@gwogco.com**

September 13, 2018

Colorado Oil and Gas Conservation Commission  
1120 Lincoln Street, Suite 801  
Denver, Colorado 80203

RE: **Proposed Wellbore Spacing Unit**  
Berry IC 11-199HC  
Codell New Drill

NWNW Section 8  
Township 3 North, Range 67W, 6th P.M.  
Weld County, Colorado

Dear Director:

Great Western Operating Company, LLC is planning to drill the above captioned well in accordance with the provisions of COGCC Rule 318A.e.

Great Western proposed wellbore spacing unit consists of:

**T3N-R67W**

*Sec. 7: All*

*Sec. 8: W2W2*

**T3N-R68W**

*Sec. 11: E2E2*

*Sec. 12: All*

*1600 Acres*

The 30 day notification time period has passed and we have not received any objections to such well locations or proposed spacing unit, therefore Great Western hereby requests the Director to approve the above mentioned well. Great Western Operating Company, LLC respectfully requests that the COGCC review the enclosed map illustrating the proposed wellbore spacing unit.

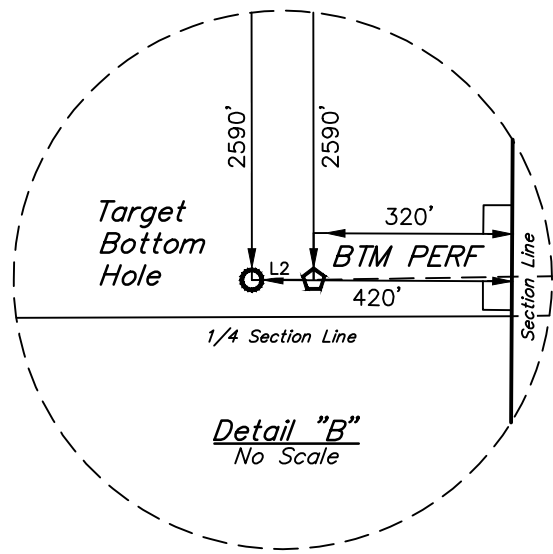
Respectfully,

*Natalie Svendsen*

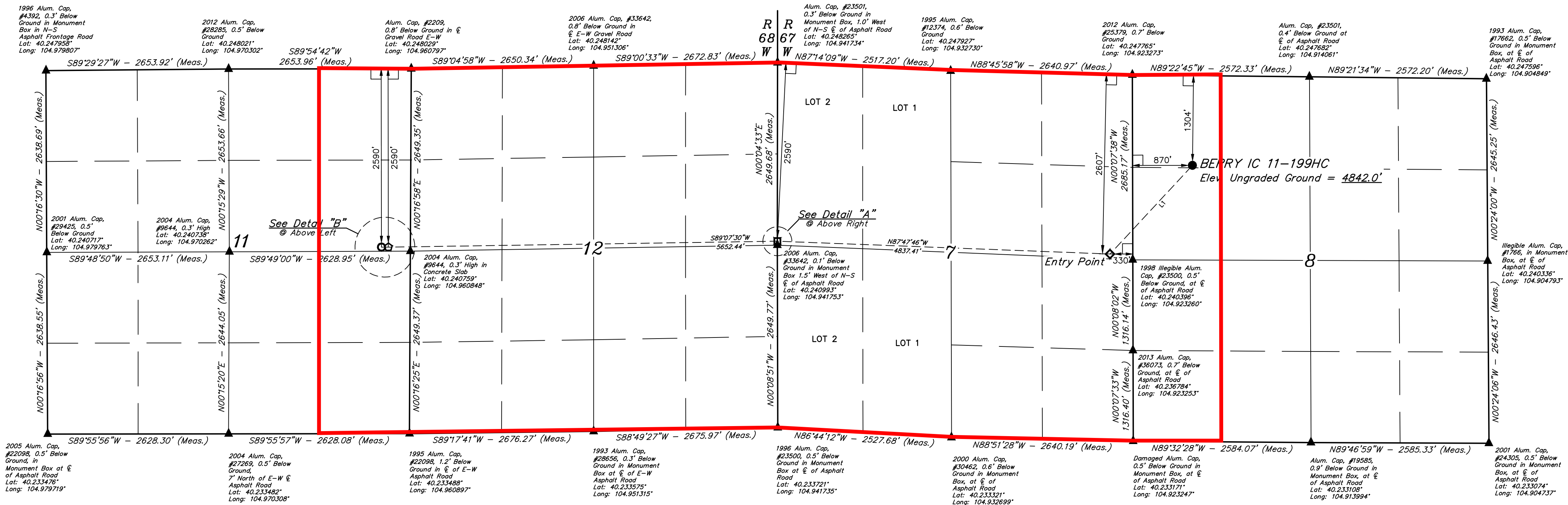
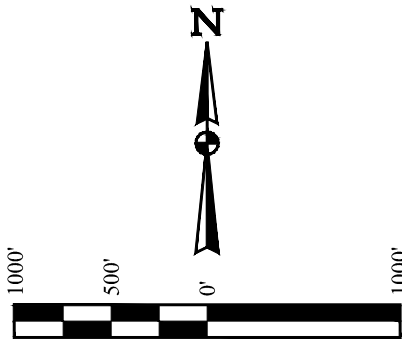
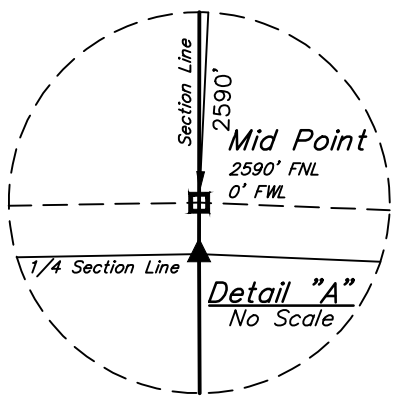
Natalie Svendsen  
Regulatory Analyst  
Great Western Operating Company, LLC

BERRY IC 11-199HC  
NW 1/4 NW 1/4, SECTION 8, T3N, R67W, 6th P.M.  
WELD COUNTY, COLORADO

BASIS OF BEARINGS  
TRANSVERSE MERCATOR PROJECTION WITH A CENTRAL MERIDIAN OF W105°00'00".  
BASIS OF ELEVATION  
OPUS SOLUTION GENERATED NAVD 88



LINE TABLE		
LINE	DIRECTION	LENGTH
L1	S42°54'59"W	1758.05'
L2	S89°54'42"W	100.00'



- LEGEND:
- 90° SYMBOL
  - PROPOSED WELLHEAD.
  - TARGET BOTTOM HOLE.
  - ENTRY POINT.
  - MID POINT.
  - BTM PERF.
  - SECTION CORNERS LOCATED. (NAD 83)

NAD 83 (SURFACE LOCATION)	NAD 83 (ENTRY POINT)	NAD 83 (MID-POINT)	NAD 83 (BTM PERF)	NAD 83 (TARGET BOTTOM HOLE)
LATITUDE = 40°14'38.97" (40.244159) LONGITUDE = 104°55'12.54" (104.920151)	LATITUDE = 40°14'26.26" (40.240628) LONGITUDE = 104°55'27.99" (104.924442)	LATITUDE = 40°14'28.14" (40.241149) LONGITUDE = 104°56'30.31" (104.941752)	LATITUDE = 40°14'27.31" (40.240920) LONGITUDE = 104°57'43.17" (104.961993)	LATITUDE = 40°14'27.31" (40.240920) LONGITUDE = 104°57'44.46" (104.962351)
NAD 27 (SURFACE LOCATION)	NAD 27 (ENTRY POINT)	NAD 27 (MID-POINT)	NAD 27 (BTM PERF)	NAD 27 (TARGET BOTTOM HOLE)
LATITUDE = 40°14'39.03" (40.244175) LONGITUDE = 104°55'10.63" (104.919620)	LATITUDE = 40°14'26.32" (40.240645) LONGITUDE = 104°55'26.08" (104.923911)	LATITUDE = 40°14'28.19" (40.241165) LONGITUDE = 104°56'28.39" (104.941221)	LATITUDE = 40°14'27.37" (40.240937) LONGITUDE = 104°57'41.26" (104.961460)	LATITUDE = 40°14'27.37" (40.240936) LONGITUDE = 104°57'42.54" (104.961818)

CERTIFICATE OF RECORDING  
THIS IS TO CERTIFY THAT THE ABOVE DESCRIBED SURVEY WAS MADE AND RECORDED UNDER MY SUPERVISION AND THAT THE SAME ARE TRUE AND CORRECT TO THE BEST OF MY KNOWLEDGE AND BELIEF.  
REGISTERED LAND SURVEYOR  
REGISTRATION NO. 28285  
STATE OF COLORADO  
JAMES FRESHWATER  
CIVIL ENGINEER  
JUL 18 2018

REV: 1 07-23-18 D.J.S. (ENTRY POINT MOVE)

PDOP = 1.4

UELTS, LLC  
Corporate Office \* 85 South 200 East  
Vernal, UT 84078 \* (435) 789-1017

SURVEYED BY JAMES FRESHWATER 02-09-18 SCALE  
DRAWN BY C.VIE 06-12-18 1" = 1000'

WELL LOCATION PLAT