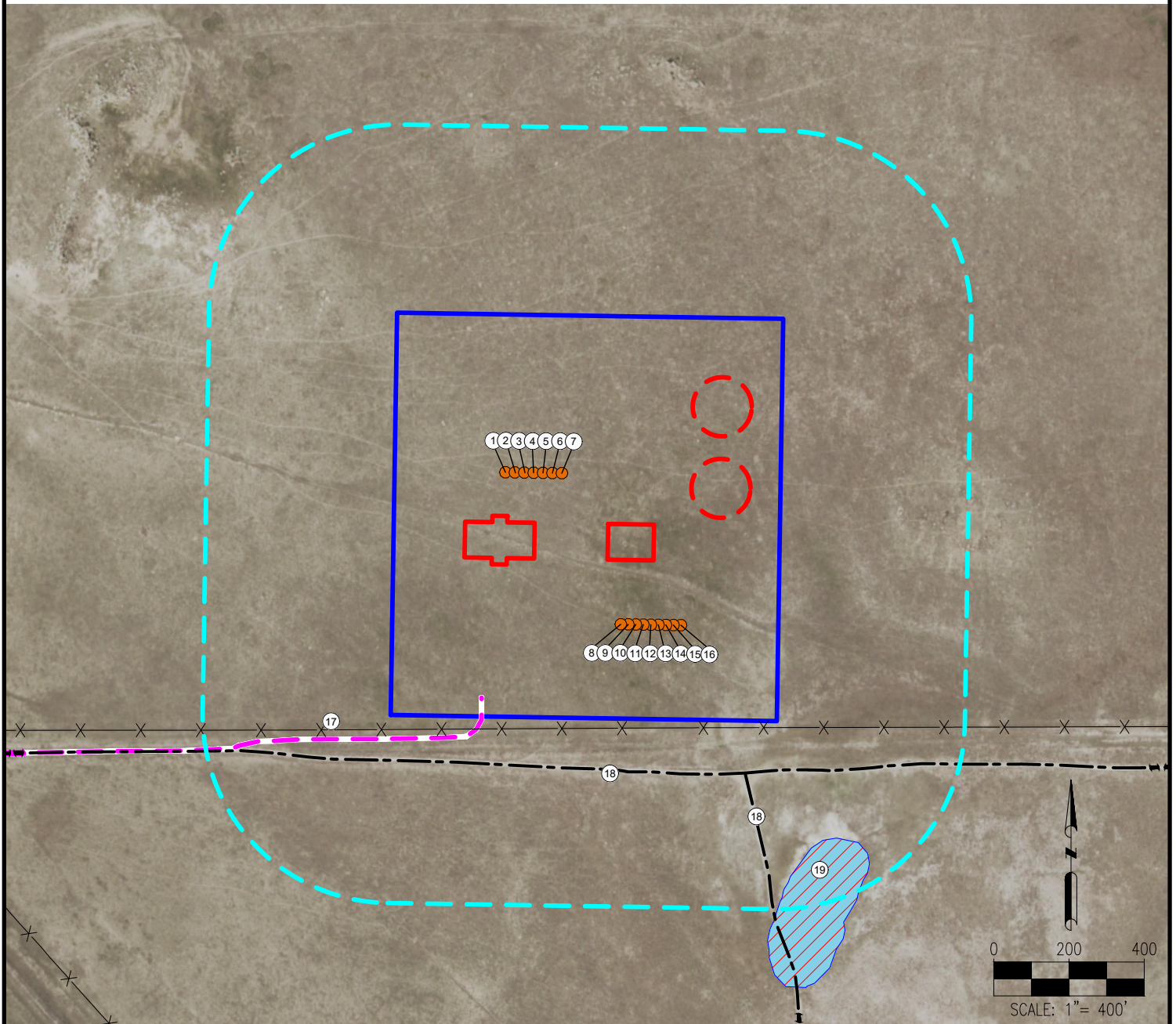


# PINTAIL PAD LOCATION DRAWING



- |                         |                          |   |
|-------------------------|--------------------------|---|
| 1. PT-1HN               | 9. PINTAIL FED 2-11-2HN  | 17. FENCE IS $\pm 276'$ S                         |
| 2. PT-2HC               | 10. PINTAIL FED 2-11-3HC | 18. PRIVATE ROADS ARE $\pm 387'$ S, $\pm 516'$ SE |
| 3. PT-3HN               | 11. PINTAIL FED 2-11-4HN | 19. LOW LYING AREA IS $\pm 782'$ SE               |
| 4. PT-4HN               | 12. PINTAIL FED 2-11-5HN |   |
| 5. PT-5HN               | 13. PINTAIL FED 2-11-6HN |   |
| 6. PT-6HC               | 14. PINTAIL FED 2-11-7HN |   |
| 7. PT-7HN               | 15. PINTAIL FED 2-11-8HC |   |
| 8. PINTAIL FED 2-11-1HN | 16. PINTAIL FED 2-11-9HN |   |

## LEGEND:

- |                             |                            |                  |
|-----------------------------|----------------------------|------------------|
| ● = PROPOSED WELL           | --- = PROPOSED ACCESS ROAD | = 500' RADIUS    |
| --- = EXISTING ROAD         | --- = FENCE                | = LOW LYING AREA |
| = PROPOSED DISTURBANCE AREA | = PROPOSED FACILITY        | = PROPOSED MLVT  |

## MEASURED FROM NEAREST WELL OR FACILITY:

- |                          |                |
|--------------------------|----------------|
| BUILDING                 | $\pm 2238'$ NW |
| BUILDING UNIT            | $\pm 2634'$ NW |
| PUBLIC ROAD (OSWEGO AVE) | $\pm 1728'$ W  |
| PROPERTY LINE (USA)      | $\pm 331'$ S   |
| UTILITY (POWERLINE)      | $\pm 1689'$ W  |
| RAILROAD                 | $\pm 5280'$ S  |

## MEASURED FROM NEAREST EDGE OF DISTURBANCE:

- |                                |               |
|--------------------------------|---------------|
| SURFACE WATER (LOW LYING AREA) | $\pm 340'$ SE |
|--------------------------------|---------------|

## REFERENCE LOCATION

**\*\*PINTAIL FED 2-11-1HN\*\***

LAT: 40.700024° N  
LONG: 104.063316° W  
ELEVATION: 4920'  
335' FSL & 1397' FWL  
PDOP: 1.3  
GPS OPERATOR: RYAN DESMOND

**DISCLAIMER:**  
THIS PLOT DOES NOT REPRESENT A MONUMENTED LAND SURVEY AND SHOULD NOT BE RELIED UPON TO DETERMINE BOUNDARY LINES, PROPERTY OWNERSHIP OR OTHER PROPERTY INTERESTS. PARCEL LINES, IF DEPICTED HAVE NOT BEEN FIELD VERIFIED AND MAY BE BASED UPON PUBLICLY AVAILABLE DATA THAT ALSO HAS NOT BEEN INDEPENDENTLY VERIFIED.

**DATA SOURCE:**  
AERIAL IMAGERY: NAIP 2017  
WATER WELLS: COLORADO DWR  
NHD: USGS

PUBLICLY AVAILABLE DATA SOURCES HAVE NOT BEEN INDEPENDENTLY VERIFIED BY ASCENT.

## MEASURED FROM NEAREST EDGE OF DISTURBANCE:

- |            |                |                  |
|------------|----------------|------------------|
| WATER WELL | $\pm 1217'$ N  | SWL = 0'         |
| PERMIT:    | 0108845B       |                  |
| WATER WELL | $\pm 1902'$ NW | SWL = 170'       |
| PERMIT:    | 3626257        | RECEIPT: 276779- |

## DISTURBANCE ACREAGE:

25.2 ACRES DRILLING OPERATIONS  
12.6 ACRES INTERIM RECLAIM  
CURRENT SURFACE USE: RANGELAND  
FUTURE SURFACE USE: RANGELAND

PREPARED FOR:



7535 Hilltop Circle  
Denver, CO 80221  
(303) 928-7128  
www.ascentgeomatics.com

FIELD DATE:  
12-15-17

DRAWING DATE:  
11-15-18

BY:  
JW

CHECKED:  
CSG

SITE NAME:  
PINTAIL PAD

SURFACE LOCATION:

SE 1/4 SW 1/4 SEC. 35, T9N, R60W, 6TH P.M.  
WELD COUNTY, COLORADO

