

# HALLIBURTON

iCem<sup>®</sup> Service

## **TERRA ENERGY PARTNERS**

United States of America, COLORADO

### **For: TEP**

Date: Sunday, November 18, 2018

### **SG 323-26 Surface PJR**

API# 05-045-23943

Sincerely,

**Grand Junction Cement Engineering**

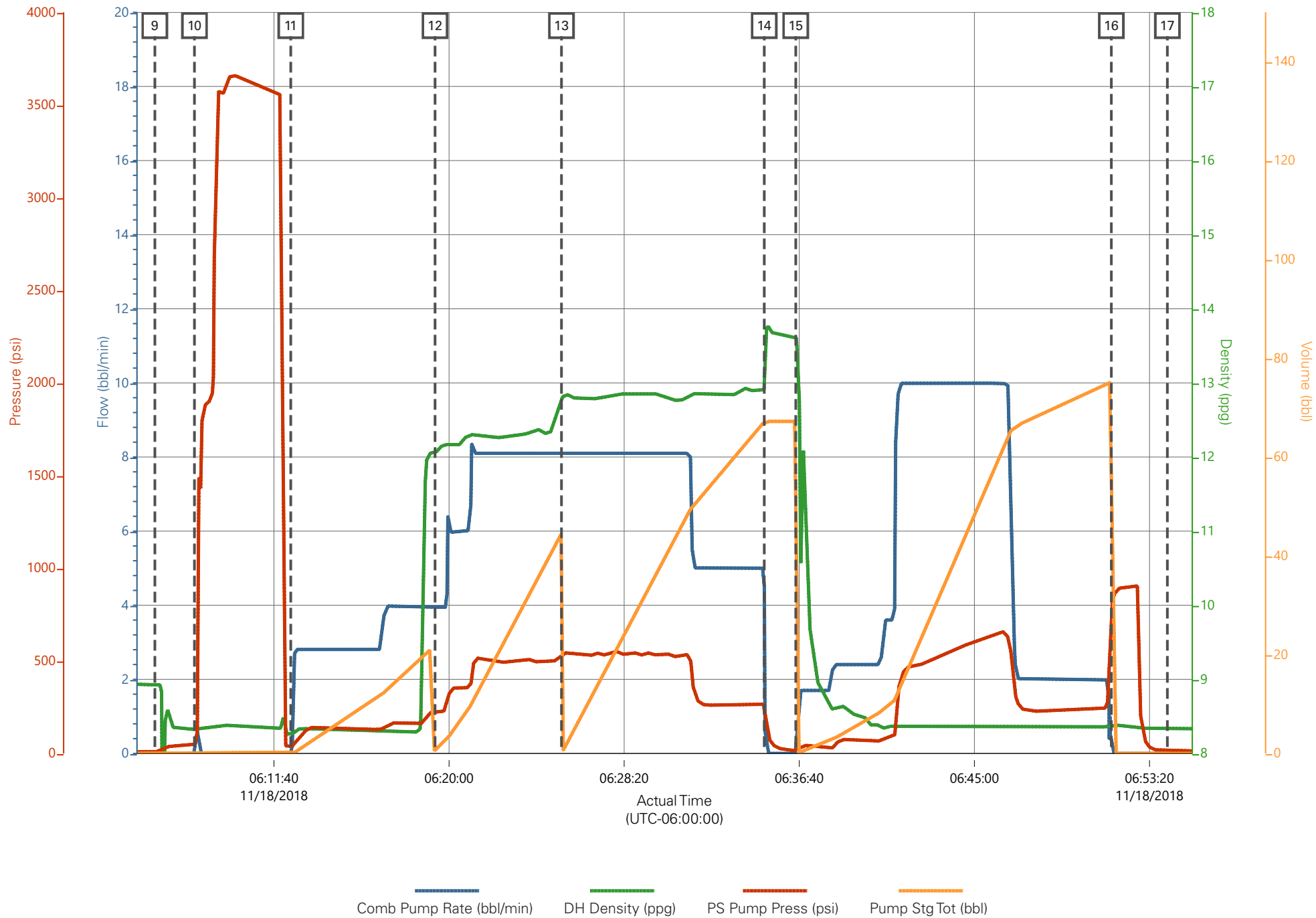
## 2.0 Real-Time Job Summary

### 2.1 Job Event Log

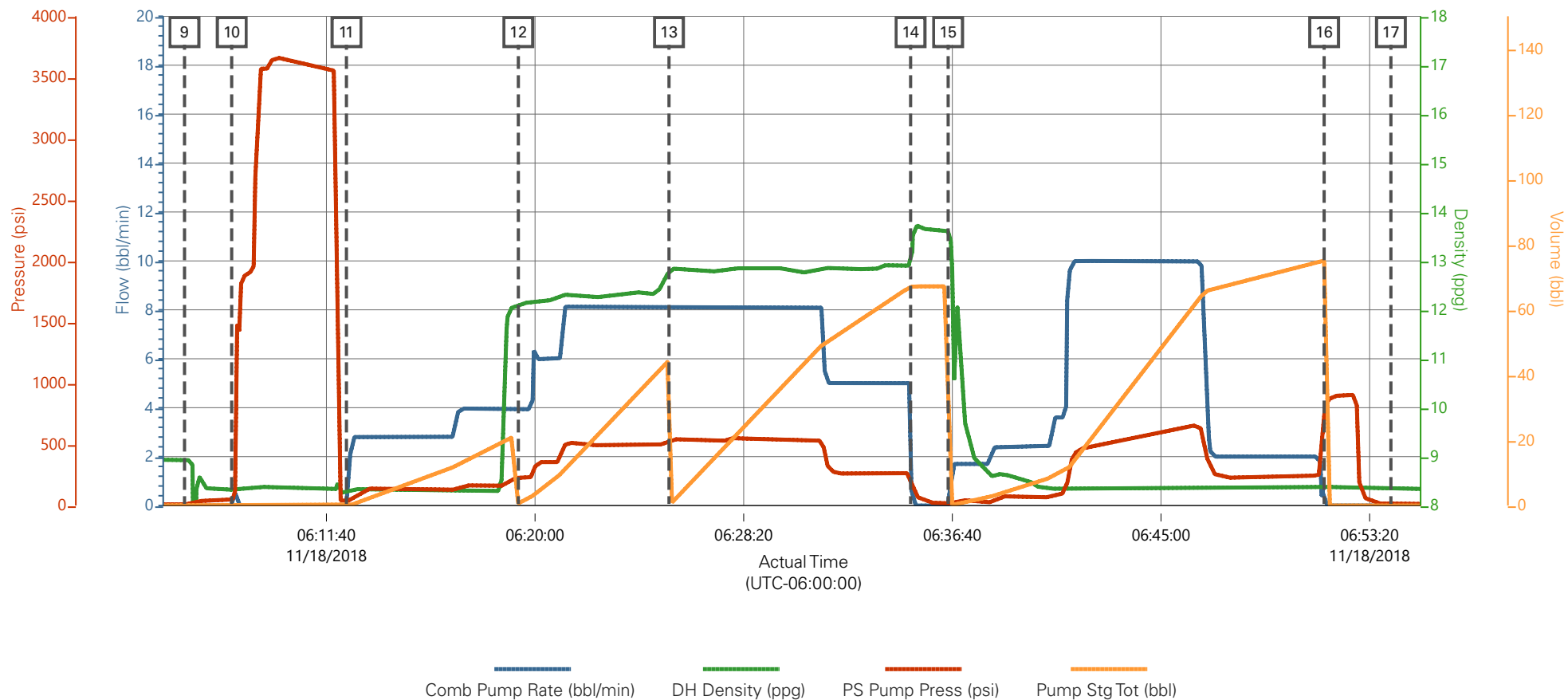
Type	Seq. No.	Graph Label	Date	Time	Source	Comb Pump Rate (bbl/min)	DH Density (ppg)	PS Pump Press (psi)	Pump Stg Tot (bbl)	Comments
Event	1	Call Out	11/17/2018	21:00:00	USER					REQUESTED ON LOCATION 11/18/18 @ 03:00
Event	2	Depart Yard Safety Meeting	11/17/2018	23:55:00	USER					JSA COMPLETED
Event	3	Crew Leave Shop	11/18/2018	00:00:00	USER					
Event	4	Arrive At Loc	11/18/2018	02:00:00	USER					RIG PULLING DRILL PIPE OUT OF HOLE
Event	5	Assessment Of Location Safety Meeting	11/18/2018	02:05:00	USER					JSA COMPLETED
Event	6	Pre-Rig Up Safety Meeting	11/18/2018	02:10:00	USER					JSA COMPLETED
Event	7	Rig-Up Equipment	11/18/2018	02:15:00	USER					
Event	8	Pre-Job Safety Meeting	11/18/2018	04:00:00	USER					JSA COMPLETED, PRESSURIZED MUD SCALES CALIBRATED TO FRESH WATER
Event	9	Start Job	11/18/2018	06:06:00	COM4					9 5/8"-32# CASING IN 13 1/2" OH, TD 1013', TP 1007.5', ST 41.3', MUD 9.0 PPG, WATER TEMP 50, PH 7, CHLORIDES 0
Event	10	Test Lines	11/18/2018	06:07:53	COM4			3000.00		TEST LINES TO 3000 PSI
Event	11	Pump Spacer 1	11/18/2018	06:12:28	COM4	4.00	8.33	165.00	20.00	20 BBLS FRESH WATER SPACER
Event	12	Pump Lead Cement	11/18/2018	06:19:20	COM4	8.00	12.30	500.00	42.40	42.4 BBLS LEAD CEMENT, 100 SKS @ 12.3 PPG / 2.38 YLD / 13.77 GAL/SK
Event	13	Pump Tail Cement	11/18/2018	06:25:21	COM4	8.00	12.80	550.00	65.80	65.8 BBLS TAIL CEMENT, 175 SKS @ 12.8 PPG / 2.11 YLD / 11.78 GAL/SK
Event	14	Drop Top Plug	11/18/2018	06:35:00	USER					PLUG AWAY
Event	15	Pump Displacement	11/18/2018	06:36:30	COM4	10.00	8.33	660.00	74.70	74.7 BBLS FRESHWATER DISPLACEMENT

Event	16	Bump Plug	11/18/2018	06:51:31	COM4	2.00	8.33	245.00	74.70	PLUG BUMPED AT CALCULATED, FINAL CIRCULATING PRESSURE 245 PSI BROUGHT TO 900 PSI
Event	17	End Job	11/18/2018	06:54:11	COM4					PIPE LEFT STATIC, GOOD RETURNS THROUGHOUT, 10 BBLS CEMENT TO SURFACE, 40# SUGAR AND TOP PLUG USED, NO ADD HOURS CHARGED
Event	18	Pre-Rig Down Safety Meeting	11/18/2018	07:25:00	USER					JSA COMPLETED
Event	19	Rig-Down Equipment	11/18/2018	07:30:00	USER					
Event	20	Pre-Convoy Safety Meeting	11/18/2018	07:55:00	USER					JSA COMPLETED
Event	21	Crew Leave Location	11/18/2018	08:00:00	USER					THANK YOU FOR CHOOSING HALLIBURTON CEMENTING OF GRAND JUNCTION, CO - RYAN MARTIN AND CREW

# TERRA - 5 MILE RANCH SG 323-26 - 9 5/8" SURFACE CASING



# TERRA - 5 MILE RANCH SG 323-26 - 9 5/8" SURFACE CASING



Description	Actual Time (UTC-06:00:00)	Comb Pump Rate (bbl/min)	DH Density (ppg)	PS Pump Press (psi)	Pump Stg Tot (bbl)
9 Start Job	06:06:00	0.00	8.93	10.00	0.00
10 Test Lines	06:07:53	0.00	8.32	50.00	0.00
11 Pump Spacer 1	06:12:28	0.00	8.26	36.00	0.00
12 Pump Lead Cement	06:19:20	3.90	12.06	228.00	0.70
13 Pump Tail Cement	06:25:21	8.10	12.79	529.00	44.60
14 Drop Top Plug	06:35:00	4.50	12.90	257.00	67.20
15 Pump Displacement	06:36:30	0.00	13.61	15.00	67.20
16 Bump Plug	06:51:31	0.00	8.38	781.00	75.10
17 End Job	06:54:11	0.00	8.34	13.00	0.00