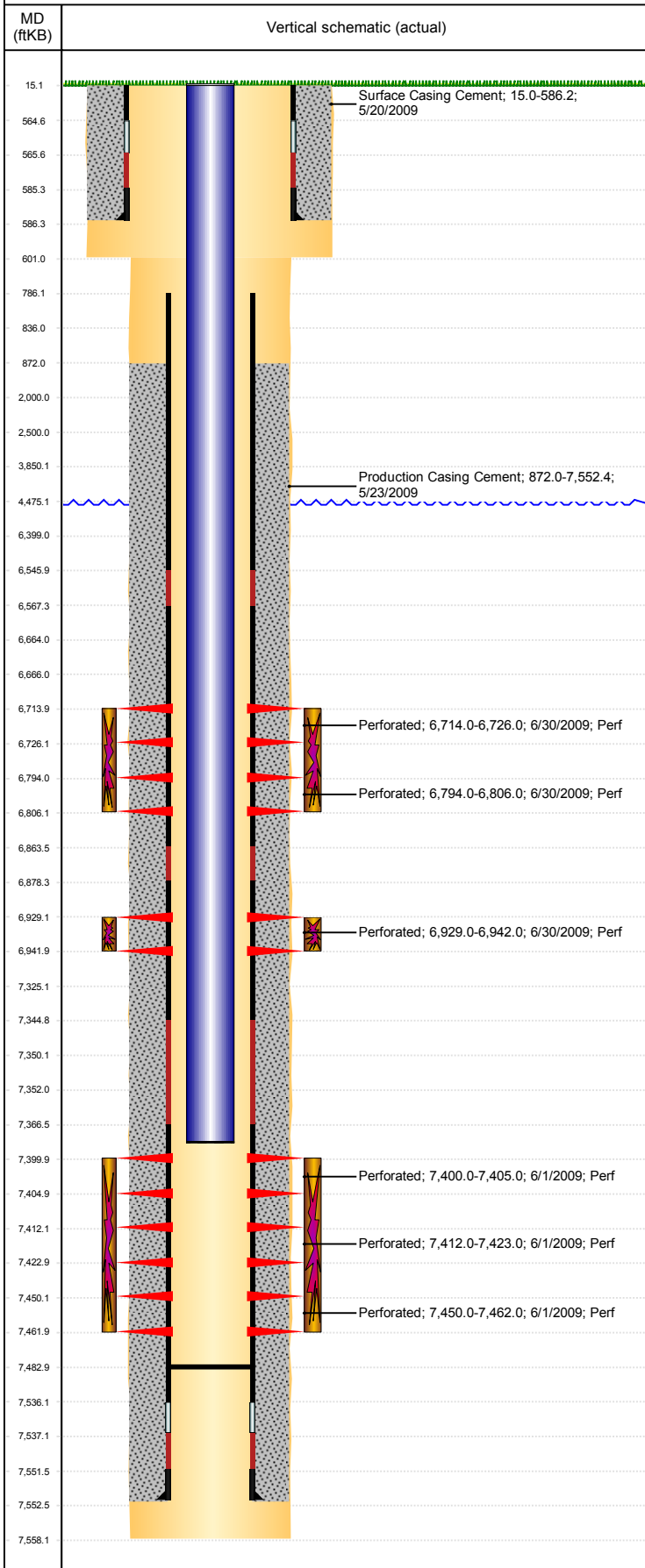


**Well Name: GUTTERSEN STATE D10-24**

VERTICAL, ORIGINAL HOLE, 1/23/2019 8:21:44 AM



Well Header									
API 05-123-29082		Business Unit DJ BASIN			District 15		Well Config VERTICAL		
KB - GL / MSL (ft... 15.00		Spud Date 5/19/2009		P & A Date		Well Production Status SI			SoRT No
Comment 318Ae LOCATION.									
Surface Location (Congressional)									
Qtr 3 NE	Qtr 4 SW	Section 10	Twonshp 3	Twonsh... N	Range 64	Rng E... W	Actual Latitude (°) 40.23637476	Actual Longitude (°) -104.53735970	
Wellbore Sections									
Section Des			Size (in)			Act Top, MD (ftKB)		Act Btm, MD (ftKB)	
SURFACE			12 1/4			15		601	
PRODUCTION			7 7/8			601		7,558	
Casing Strings									
Csg Des			Run Date		OD (in)	Wt/Len (lb/ft)	Grade	Top, MD (ftKB)	MD (ftKB)
Surface			5/20/2009		8 5/8	24.00	J-55	15.0	586.2
Production			5/23/2009		4 1/2	11.60	M-80	15.0	7,552.4
Cement									
Des					Start Date		Top (ftKB)		Btm (ftKB)
Surface Casing Cement					5/20/2009		15.0		586.2
Production Casing Cement					5/23/2009		872.0		7,552.4
Zone Statuses									
Zone Name		Status Date	Status	Fluid Type	Job				Prod Method
CODELL		1/29/2010	PR	Water	DRILLING/COMPLETION - ORIGINAL, 5/18/2009...				Flowing
CODELL		2/9/2017	SI						
NIOBRARA		8/25/2009	PR						
NIOBRARA		1/29/2010	PR	Water					Flowing
J SAND		1/29/2010	PR	Water					
J SAND		2/9/2017	SI						
Flowing									
Perforation Data									
Linked Zone			Bnch/Stg	Entered Shot Total	Top (ftKB)		Btm (ftKB)		Date
NIOBRARA, ORIGINAL HOLE			B	24	6,714.00		6,726.00		6/30/2009
NIOBRARA, ORIGINAL HOLE			C	24	6,794.00		6,806.00		6/30/2009
CODELL, ORIGINAL HOLE				40	6,929.00		6,942.00		6/30/2009
J SAND, ORIGINAL HOLE			01	20	7,400.00		7,405.00		6/1/2009
J SAND, ORIGINAL HOLE			02	44	7,412.00		7,423.00		6/1/2009
J SAND, ORIGINAL HOLE			03	48	7,450.00		7,462.00		6/1/2009
Stimulation Intervals									
Zone				Start Date		Top (ftKB)		Btm (ftKB)	
NIOBRARA, ORIGINAL HOLE				6/30/2009		6,714.0		6,806.0	
CODELL, ORIGINAL HOLE				6/30/2009		6,929.0		6,942.0	
J SAND, ORIGINAL HOLE				6/30/2009		7,400.0		7,462.0	
Other In Hole									
Run Date		Des				OD (in)	Top (ftKB)		Btm (ftKB)
Logs									
Date		Type					Top, MD (ftKB)		Btm, MD (ftKB)
5/22/2009		Caliper/Comp. Density/Neutron/GR/SP/ML					2,750.0		7,546.0
5/22/2009		DIL/GR/SP/Caliper					588.0		7,546.0
6/1/2009		CBL/CCL/GR					666.0		7,523.0
1/10/2019		GYRO					15.0		7,300.0
Plug Back Total Depths									
Date		Type		Com					Depth (ftKB)
6/1/2009									7,524.0
1/22/2010		PLUG REMNANTS		PUSH THE PLUGS TO THIS POINT AND COULD NOT MAKE...					7,483.0