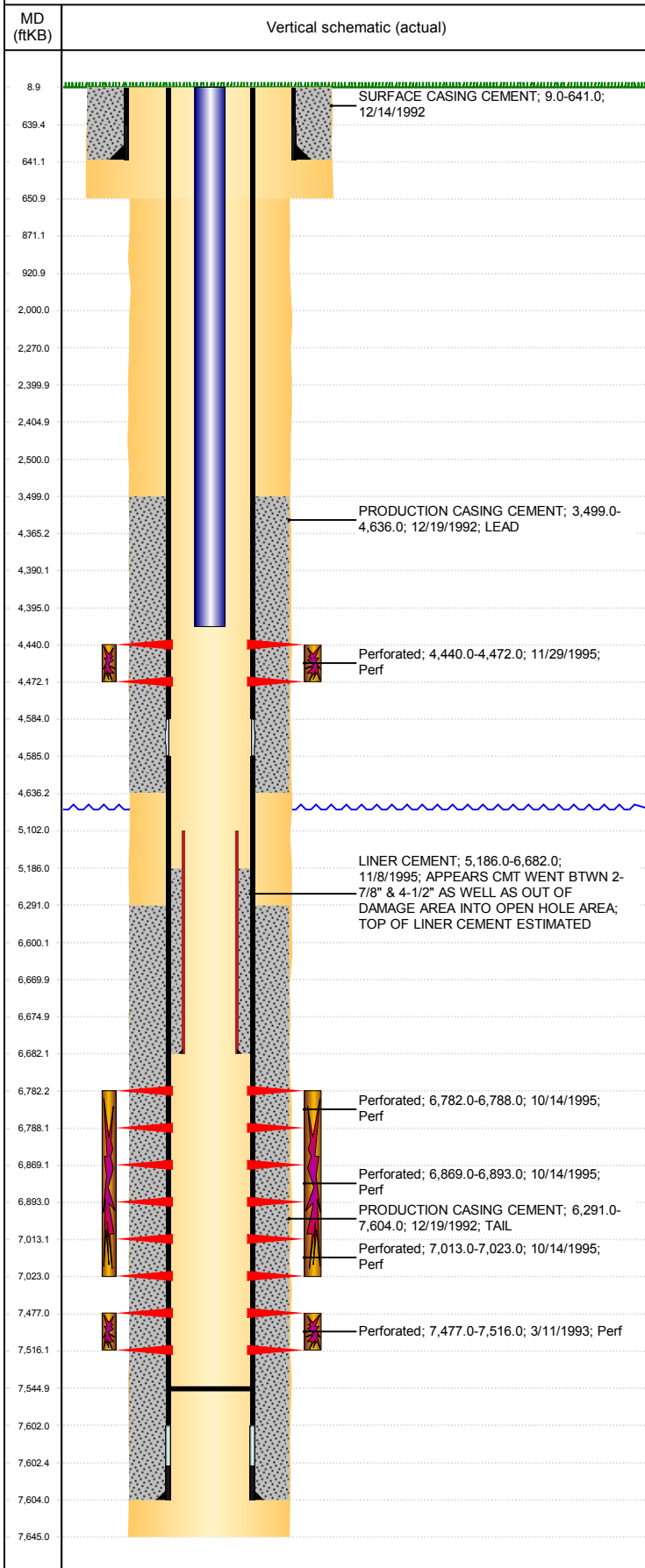


**Well Name: CAMOLO RED D27-02J**

VERTICAL, ORIGINAL HOLE, 1/21/2019 10:20:31 AM



Well Header									
API 05-123-16624		Business Unit DJ BASIN			District 15		Well Config VERTICAL		
KB - GL / MSL (ft... 9.00		Spud Date 12/13/1992		P & A Date		Well Production Status SI			SoRT No
Comment LIMITED ENTRY. FO tool @ 4584';liner top 5102', tight @ 2313'. TIGHT SPOT/BAD CASING @6255'. 11/8/95- APPEARS CMT WENT BETWEEN 2 7/8" & 4 1/2" AS WELL AS OUT OF DMGD AREA INTO OPEN HOLE AREA; TOP OF LINER CEMENT ESTIMATED. 7/13/99- TRIED TO ISOLATE SUSSEX, COULD NOT GET PAST TIGHT SPOT. PULLED OUT AND LANDED TUBING @ 4418'. STATE SHOWS SHUT IN DEC 2015. DISCREPANCY: SURF CSG SET DEPTH-ST & NEWER DRL RPTS 550', G DRIVE DAILY RPT 641'.									
Surface Location (Congressional)									
Qtr 3 NE	Qtr 4 NW	Section 27	Twnshp 3	Twnsh.... N	Range 64	Rng E/... W	Actual Latitude (°) 40.20090007	Actual Longitude (°) -104.54102708	
Wellbore Sections									
Section Des		Size (in)			Act Top, MD (ftKB)		Act Btm, MD (ftKB)		
SURFACE		12 1/4			9		651		
PRODUCTION		7 7/8			651		7,645		
Casing Strings									
Csg Des		Run Date	OD (in)	Wt/Len (lb/ft)	Grade	Top, MD (ftKB)	MD (ftKB)		
Surface		12/13/1992	8 5/8	24.00		9.0	641.0		
Liner		11/8/1995	2 7/8	6.50	N-80	5,102.0	6,682.0		
Production		12/19/1992	4 1/2	11.60	J-55	9.0	7,604.0		
Cement									
Des				Start Date		Top (ftKB)	Btm (ftKB)		
SURFACE CASING CEMENT				12/14/1992		9.0	641.0		
PRODUCTION CASING CEMENT				12/19/1992		3,499.0	4,636.0		
PRODUCTION CASING CEMENT				12/19/1992		6,291.0	7,604.0		
LINER CEMENT				11/8/1995		5,186.0	6,682.0		
Zone Statuses									
Zone Name	Status Date	Status	Fluid Type	Job			Prod Method		
NIOBRARA-CO...									
SUSSEX	10/8/2015	PR							
SUSSEX	3/10/2017	SI							
J SAND	10/8/2015	PR							
J SAND	3/10/2017	SI							
NIOBRARA	10/8/2015	PR							
NIOBRARA	3/10/2017	SI							
CODELL	12/11/1995	PR		RECOMPLETION, 10/12/1995 00:00			Flowing		
CODELL	2/8/2010	PR	Water				Flowing		
Perforation Data									
Linked Zone		Bnch/Stg	Entered Shot Total	Top (ftKB)		Btm (ftKB)		Date	
SUSSEX, ORIGINAL HOLE			33	4,440.00		4,472.00		11/29/1995	
NIOBRARA, ORIGINAL HOLE		A	4	6,782.00		6,788.00		10/14/1995	
NIOBRARA, ORIGINAL HOLE		B	5	6,869.00		6,893.00		10/14/1995	
CODELL, ORIGINAL HOLE			5	7,013.00		7,023.00		10/14/1995	
J SAND, ORIGINAL HOLE			51	7,477.00		7,516.00		3/11/1993	
Stimulation Intervals									
Zone			Start Date		Top (ftKB)		Btm (ftKB)		
SUSSEX, ORIGINAL HOLE			12/1/1995		4,440.0		4,472.0		
NIOBRARA-CODELL, ORIGINAL HOLE			11/20/1995		6,782.0		7,023.0		
J SAND, ORIGINAL HOLE			3/13/1993		7,477.0		7,516.0		
Other In Hole									
Run Date		Des				OD (in)	Top (ftKB)	Btm (ftKB)	
Logs									
Date		Type				Top, MD (ftKB)		Btm, MD (ftKB)	
12/20/1992		COMPENSATED DENSITY				4,350.0		7,570.0	
12/20/1992		INDUCTION				642.0		7,598.0	
1/8/1993		GAMMA RAY				4,400.0		4,900.0	
1/26/1993		CBL/CCL/GR				3,350.0		7,399.0	
8/30/2017		GYRO				0.0		4,350.0	

**Well Name: CAMOLO RED D27-02J**

VERTICAL, ORIGINAL HOLE, 1/21/2019 10:20:31 AM

## Plug Back Total Depths

