



00552053

NOV

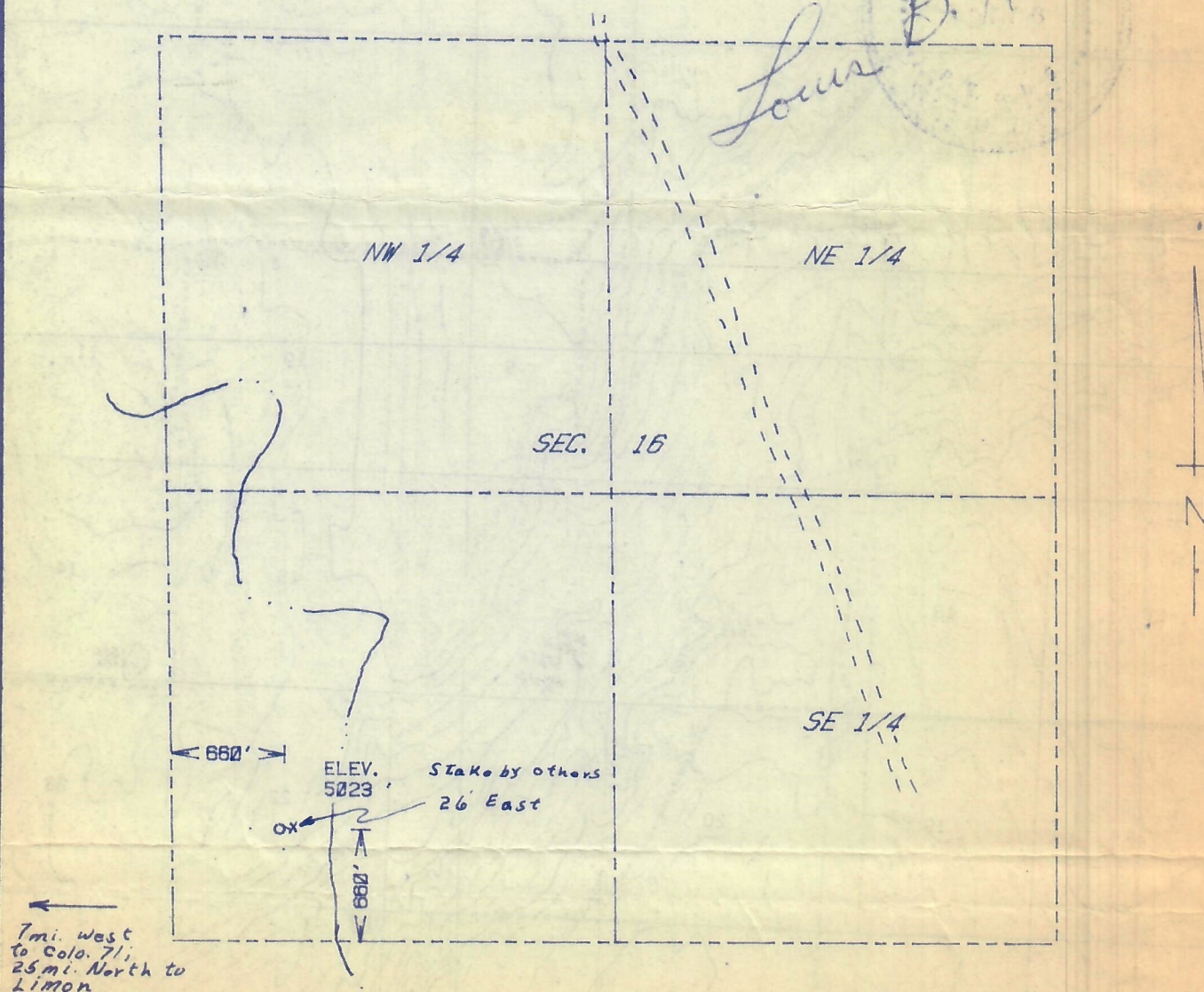
4 1983

RECEIVED
COLO. OIL & GAS CONS. COMM.

The accompanying plat is an accurate representation showing the location of a proposed well. This location may be described as a point 660 feet north of the south line, and 660 feet east of the west line of Section 16, Township 13 S Range 55 W of the 6th P.M., LINCOLN County, COLORADO. The surface elevation at this point is 5023 feet m.s.l.

BEST IMAGE
AVAILABLE

Louis B. Harmon



SCALE - 1"=1000'

X Stake by others
O SURVEYED POINT
REFERENCE STAKE (121 'S, 200 'W)
SW 1/4 SEC. 16 , T 13 S, R 55 W

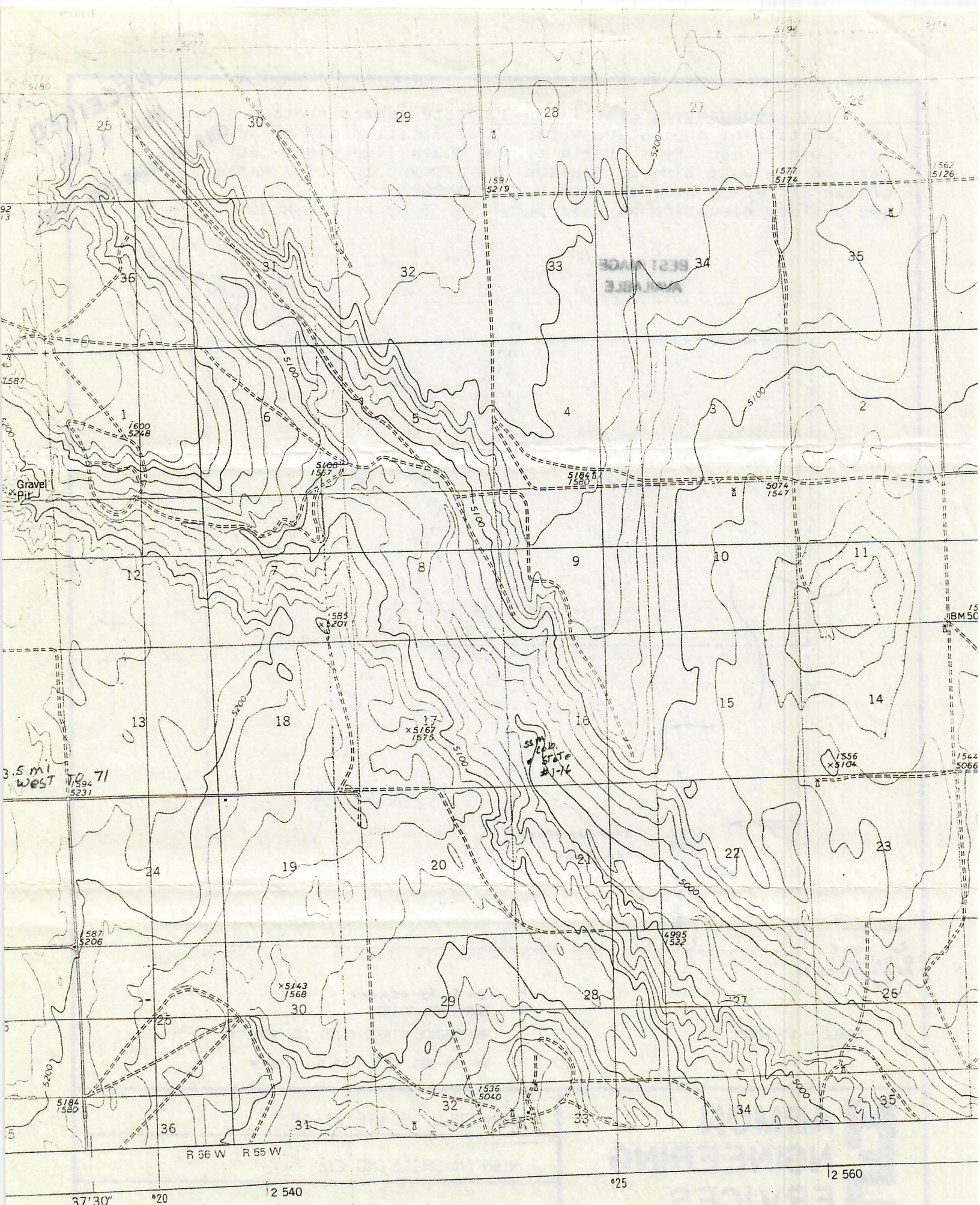
HARMON
ENGINEERING
SERVICES

SSM COLO. STATE #1-16

MURFIN DRILLING CO.

LINCOLN CO., COLORADO

17 OCTOBER 1983



MAP INDEX

11 1/2"

CONTOUR