

BRAN-DEX

WIRELINE SERVICES

GAMMA RAY CEMENT BOND

Company
Well
Field
Country
State/Prv

DIVERSIFIED OPERATING CO.
HOFFMAN 34-10
CROW
WELD
COLORADO

Company **DIVERSIFIED OPERATING CORP.**

Well **HOFFMAN 34-10**

Field **CROW**

Country **WELD** State/Prv **COLORADO**

Location

NW / SE
2470' FSL & 2040' FEL
SEC. 34 TWP. 8N RGE. 60W

Other Services

PERFORATE

Elevation

Permanent Datum

GL

Elevation

4918

K.B. 4929

Log Measured From

KB

D.F. 4928

Drilling Measured From

KB

G.L. 4918

Date **OCTOBER 20, 2000**

Well Depth **ONE**

Well ID **7045**

Well ID **7026**

Well ID **7018**

Well ID **5890**

Well ID

Well ID **WATER**

Density Viscosity

Max. Recorded Temp **172**

Estimated Cement Top **6016**

Time Well Ready

Time Logger on Bottom

Equipment Number **10**

Location

Recorded By **CLIFF KAISER**

Witnessed By **BILL SCOFIELD**

Borehole Record

Tubing Record

Run Number

Bit

From

To

Size

Weight

From

To

Casing Record

Size

Weight/Ft

Top

Bottom

Surface String

Prot. String

Production String

4.5

Liner

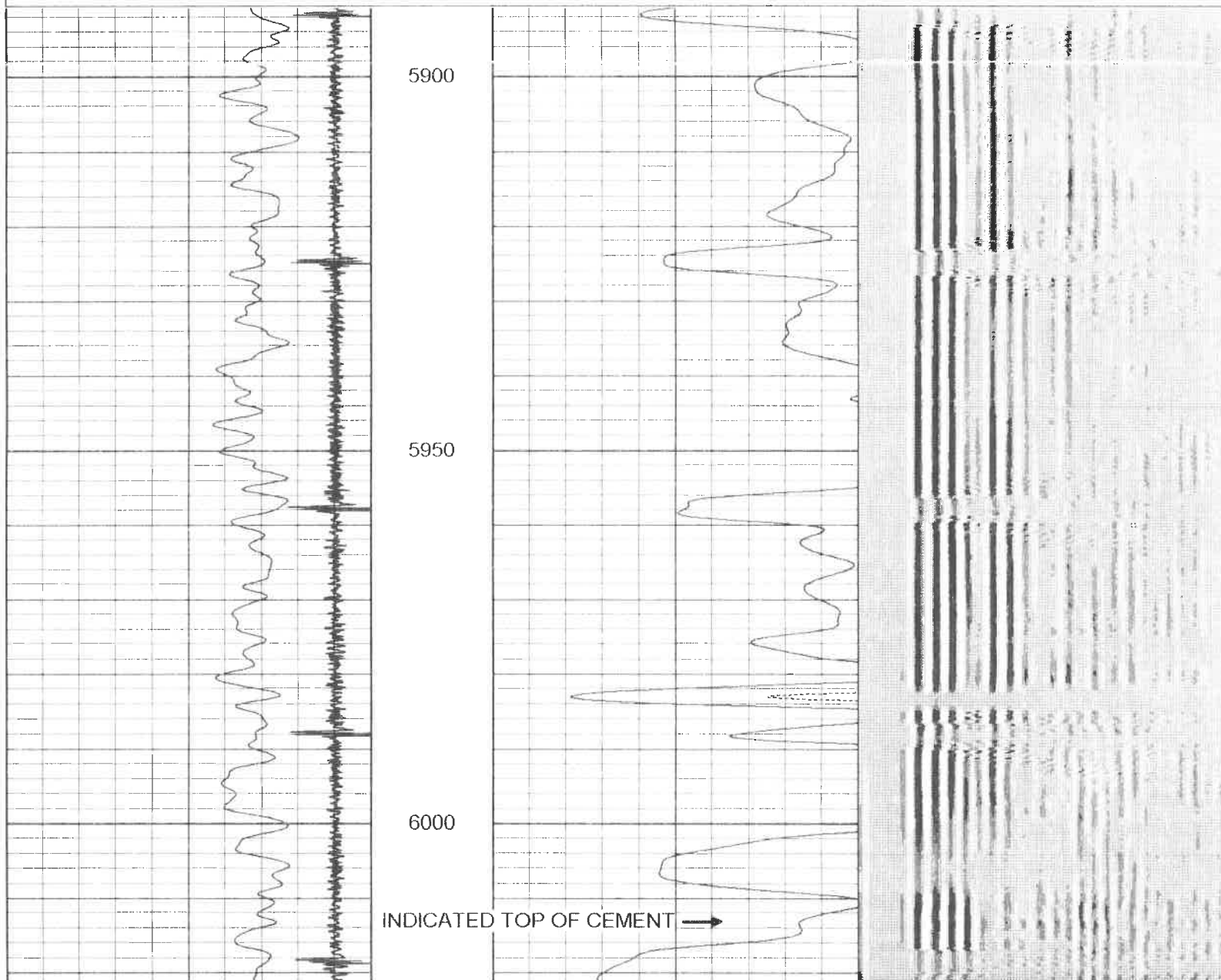
All interpretations are opinions based on inferences from electrical or other measurements and we cannot and do not guarantee the accuracy or correctness of any interpretation, and we shall not, except in the case of gross or willful negligence on our part, be liable or responsible for any loss, costs, damages, or expenses incurred or sustained by anyone resulting from any interpretation made by any of our officers, agents or employees. These interpretations are also subject to our general terms and conditions set out in our current Price Schedule.

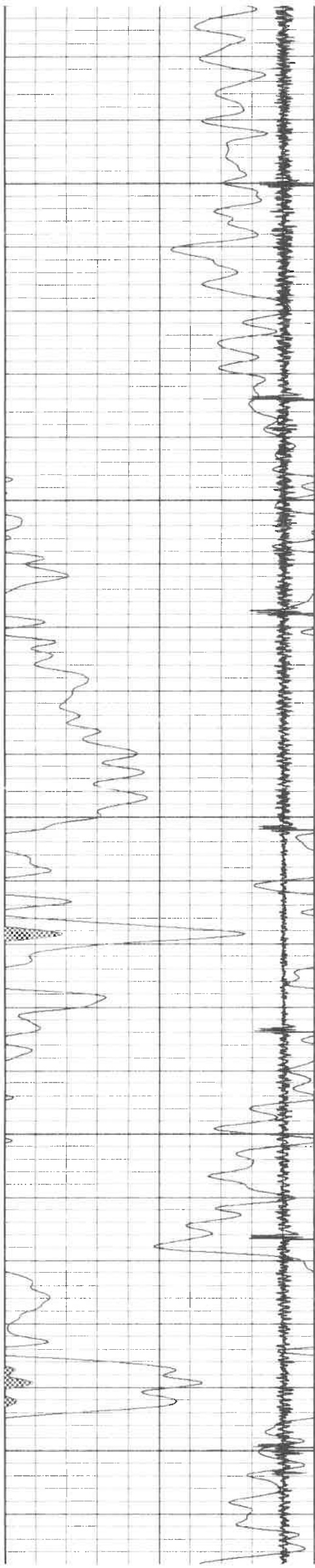
Comments

BRAN-DEX CORRECTED 4' UP HOLE TO CORROLATE
THANK YOU FOR USING BRAN-DEX WIRELINE SERVICES

Database File: doc.db
Dataset Pathname: pass4
Presentation Format: cbl01.prs
Dataset Creation: Fri Oct 20 08:09:11 2000
Charted by: Depth in Feet scaled 1:240

9	Collar Locator	-1	-2	Amplified Amplitude (mV)	20	100	Variable Density	1100
0	Gamma Ray (GAPI)	100	-2	Amplitude (mV)	75			





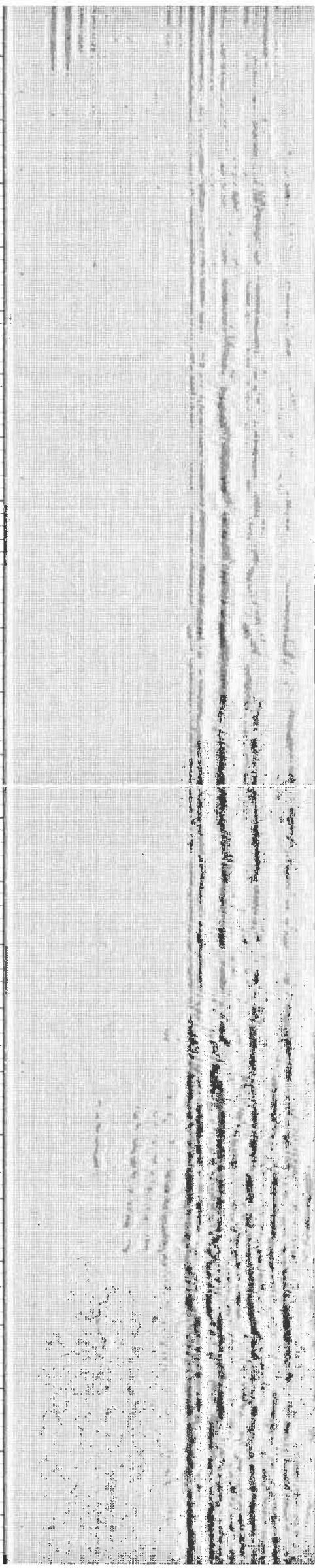
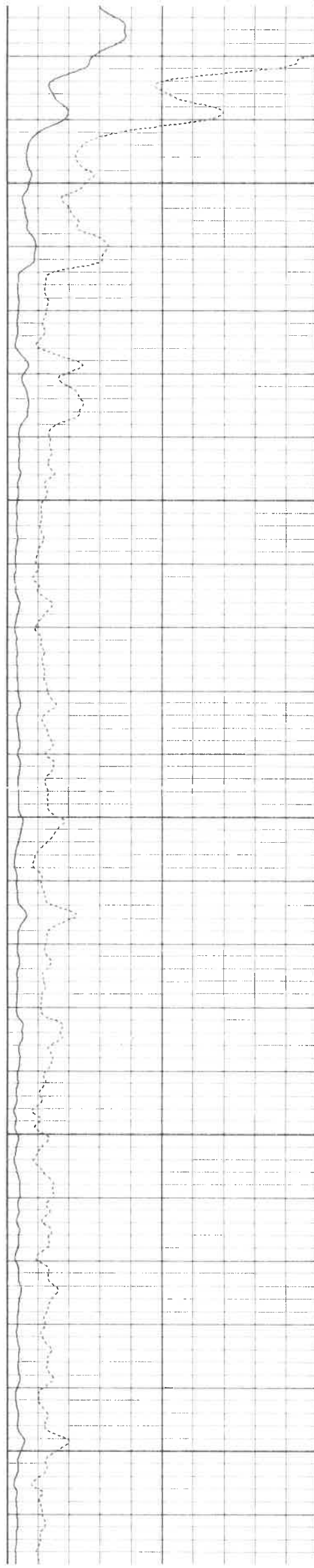
6050

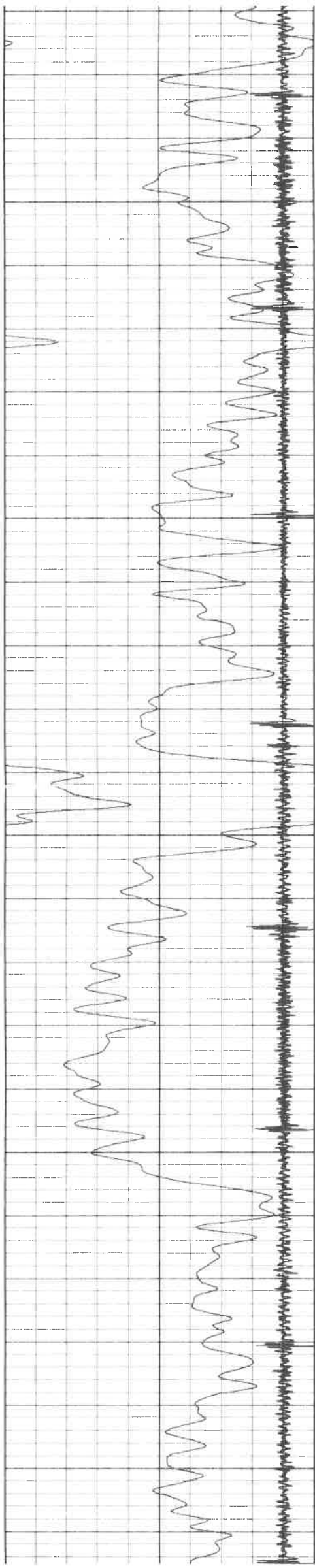
6100

6150

6200

6250





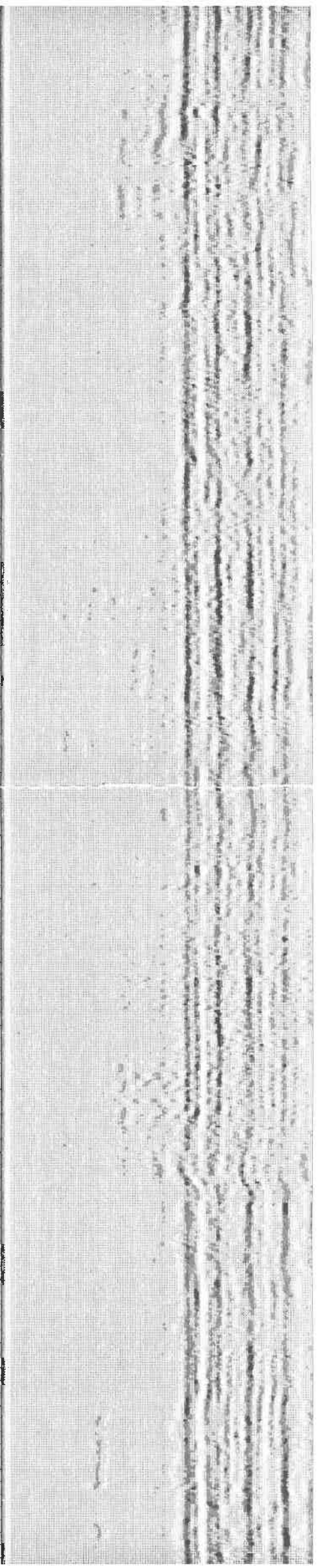
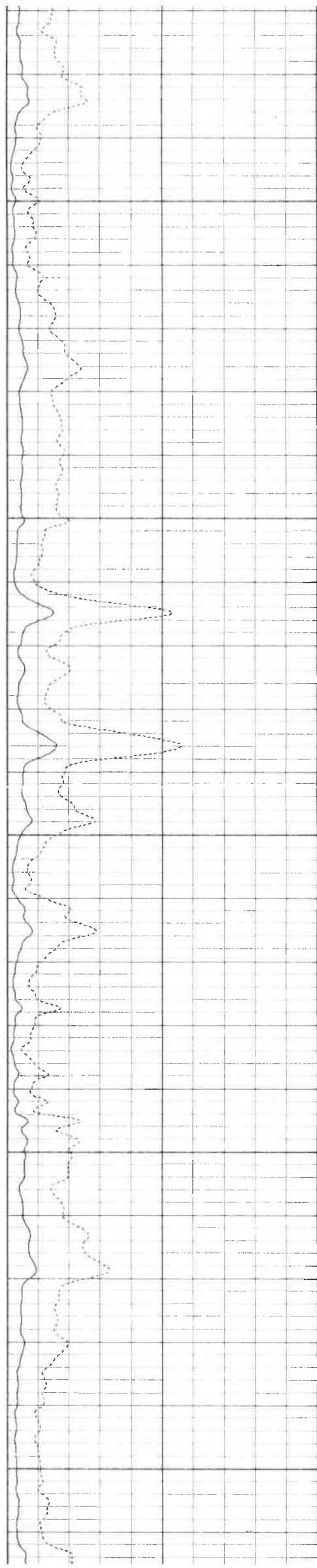
6300

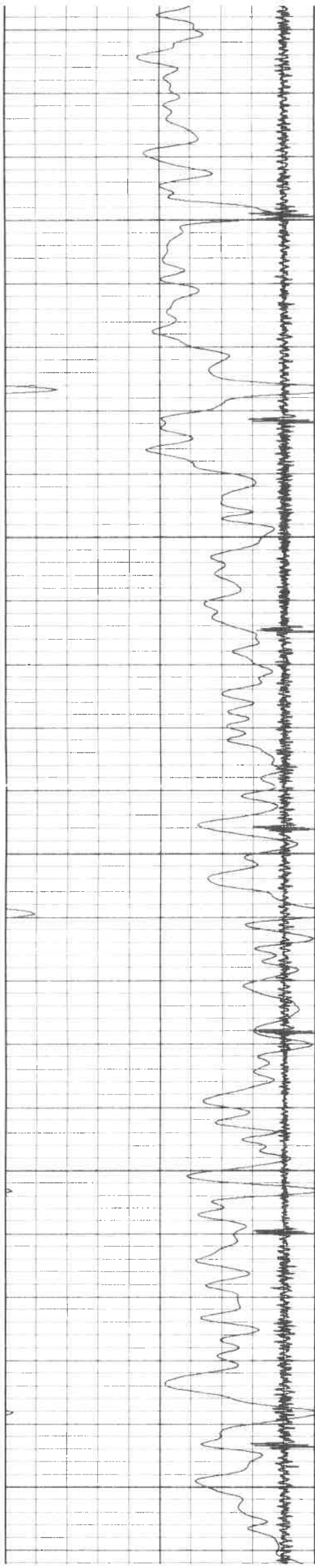
6350

6400

6450

6500





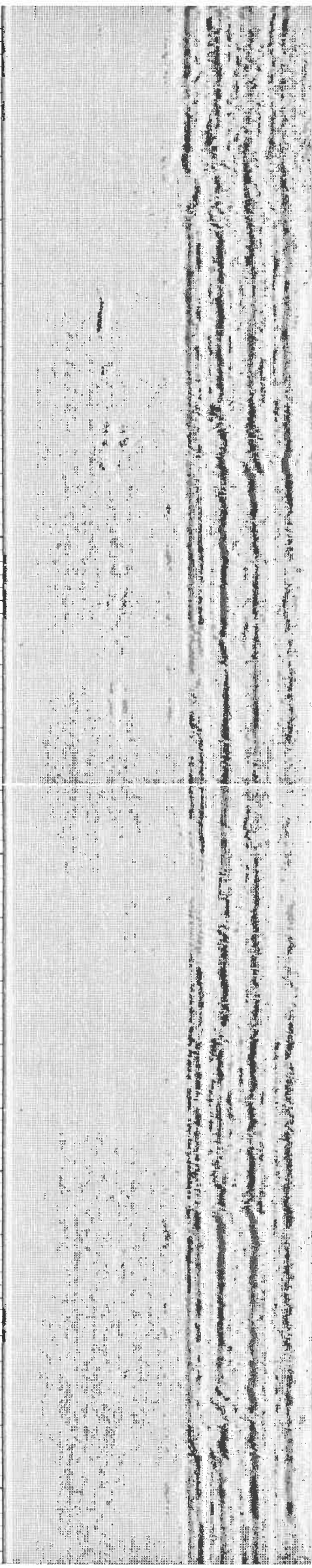
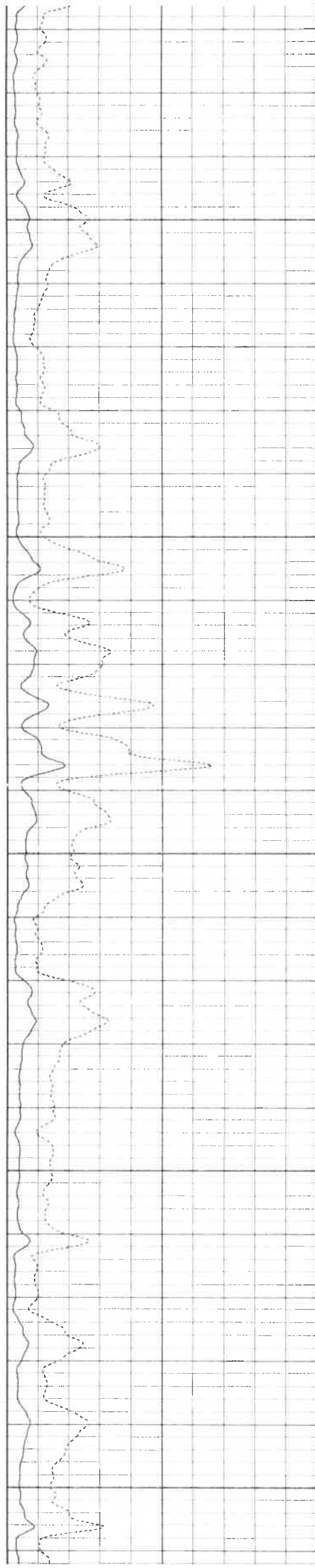
6550

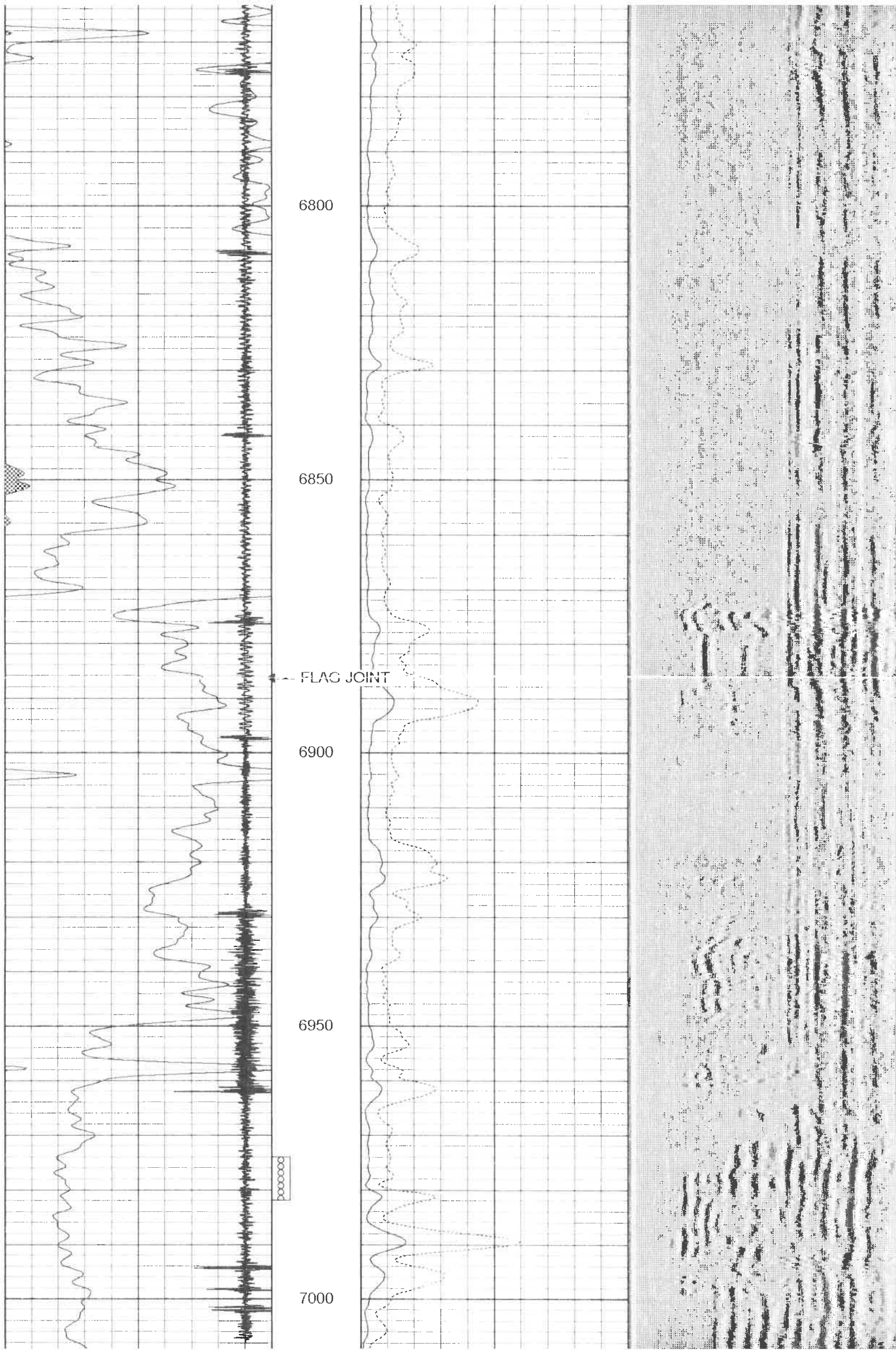
6600

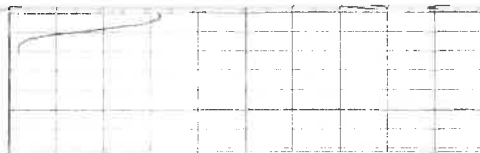
6650

6700

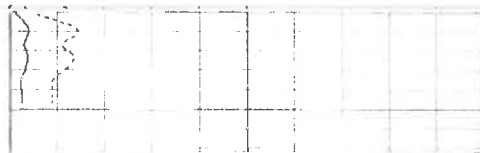
6750







9	Collar Locator	-1
0	Gamma Ray (GAPI)	100



-2	Amplified Amplitude (mV)	20
-2	Amplitude (mV)	75



100	Variable Density	1100
-----	------------------	------