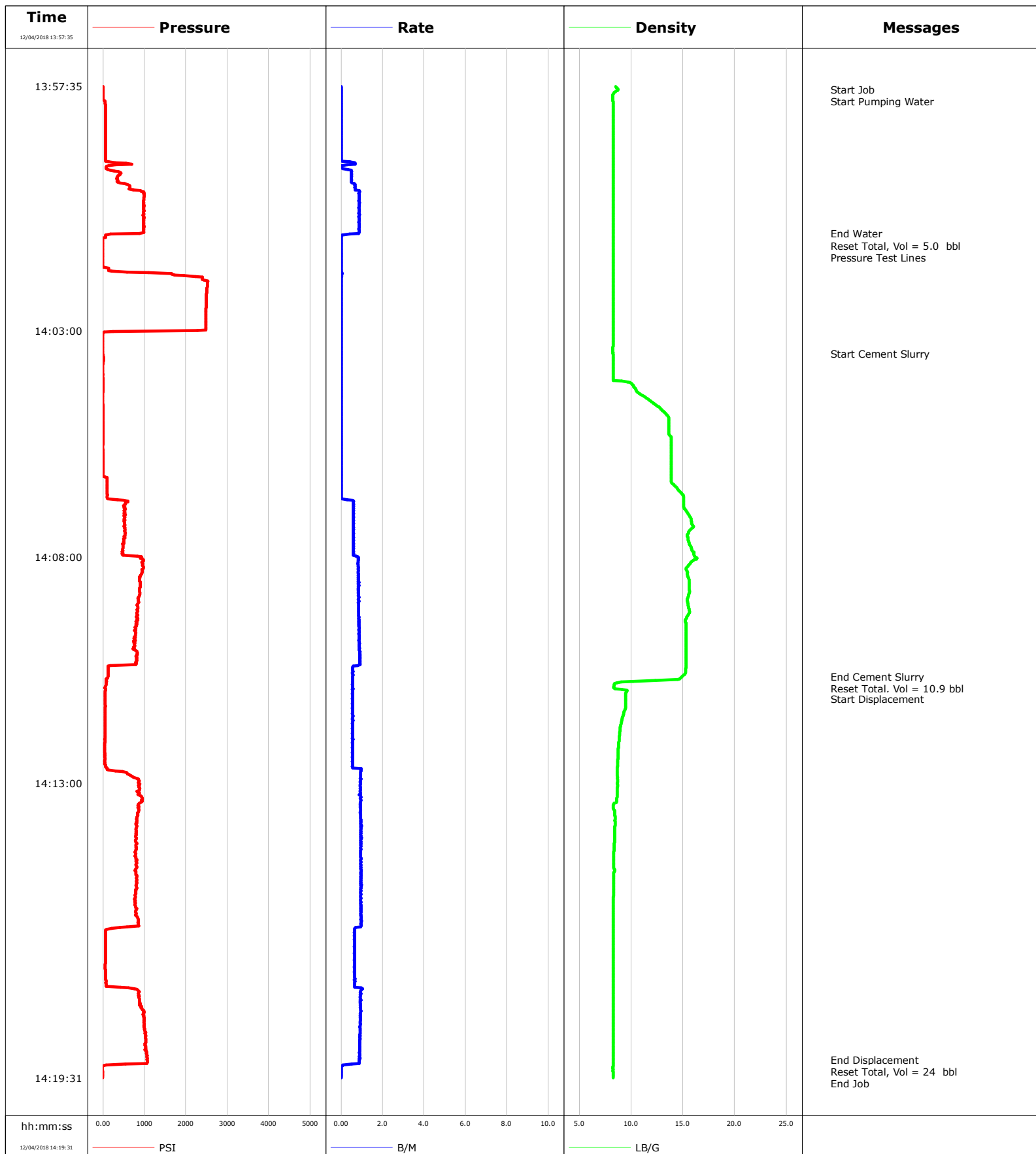


Well DAVIS-7-14
Field DJ
Engineer LUIS JIMENEZ
Country United States

Client ANADARKO PETROLEUM
SIR No. 2879506
Job Type NIO PLUG
Job Date 12-04-2018



Cementing Service Report

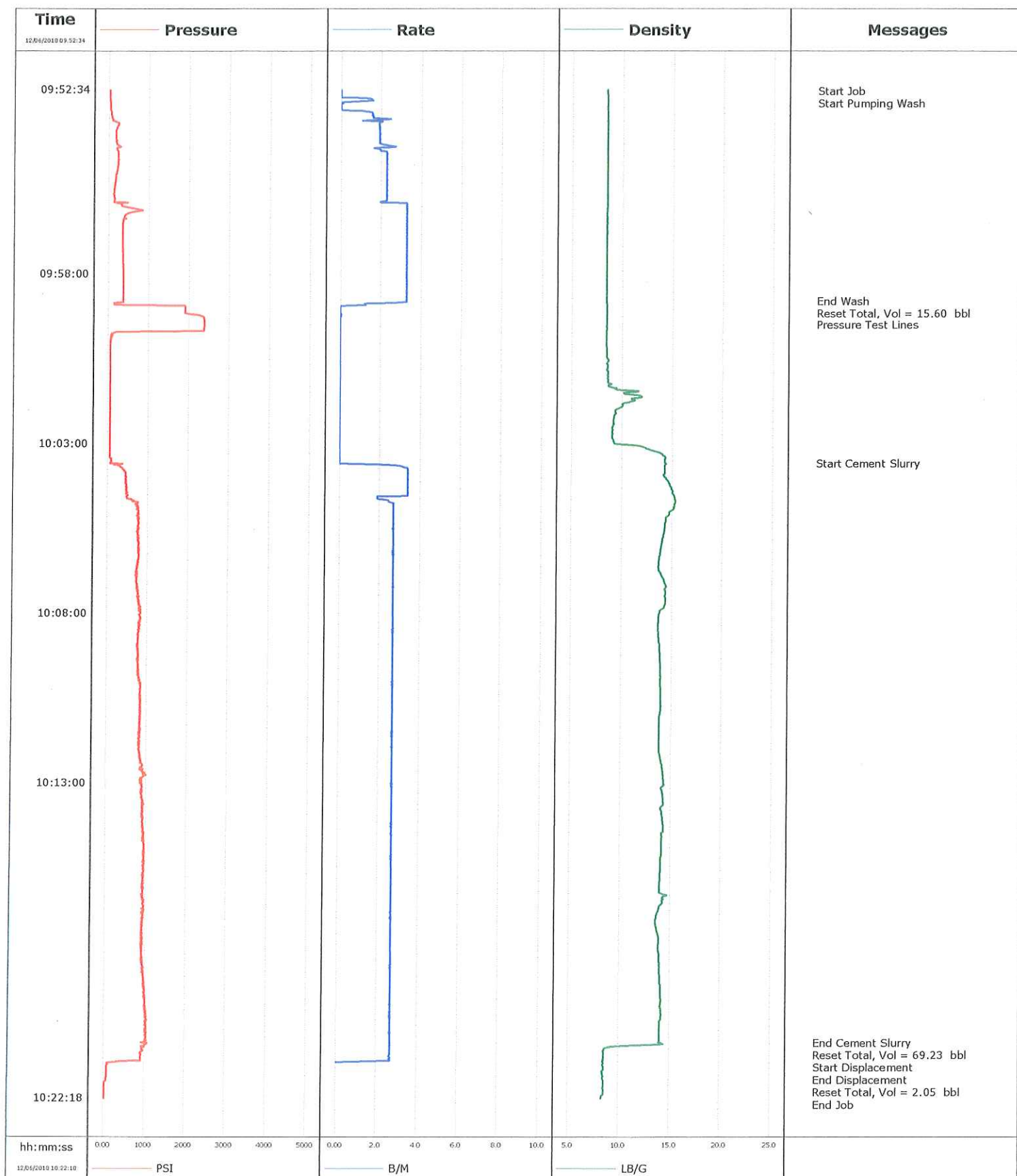
				Customer ANADARKO PETROLEUM			Job Number 2879506	
Well DAVIS-7-14 0630561130			Location (legal) WELD		Schlumberger Location CHEYENNE		Job Start Dec/04/2018	
Field DJ		Formation Name/Type		Deviation deg	Bit Size in	Well MD 7135.0 ft	Well TVD 7135.0 ft	
County WELD		State/Province Colorado		BHP psi	BHST degF	BHCT degF	Pore Press. Gradient lb/gal	
Well Master		API/UWI						
Rig Name SPN# 724		Drilled For Oil & Gas		Service Via Land		Casing/ Liner		
						Depth, ft	Size, in	Weight, lb/ft
Offshore Zone N/A		Well Class Old		Well Type Workover		7135.0	4.5	11.6
						0.0	0.0	0.0
Drilling Fluid Type		Max. Density lb/gal		Plastic Viscosity cP		Tubing/Drill Pipe		
						T/D	Depth, ft	Size, in
Service Line Cementing		Job Type NIO PLUG				4.7		
						0.0	0.0	0.0
Max. Allowed Tub. Press psi		Max. Allowed Ann. Press psi		WH Connection 2 3/8" 4.7# T/S		Perforations/Open Hole		
						Top, ft	Bottom, ft	shot/ft
						Treat Down Tubing	Displacement 24.0 bbl	Packer Type
						Tubing Vol. 10.9 bbl	Casing Vol. bbl	Annular Vol. bbl
Service Instructions 40 sks 1.53 ft3/sk 6.3 gps @ 15.8 ppg 5 bbls Water 10.9 bbls CMT= 40 sks 24 bbls Disp. est. TOC= 6427 ft NIO PLUG						Total Interval ft		
						Diameter in		
						Packer Depth ft		
						Openhole Vol. bbl		
Casing/Tubing Secured <input checked="" type="checkbox"/>		1 Hole Vol. Circulated prior to Cement <input checked="" type="checkbox"/>		Casing Tools		Squeeze Job		
Lift Pressure psi				Shoe Type		Squeeze Type		
Pipe Rotated <input type="checkbox"/>		Pipe Reciprocated <input type="checkbox"/>		Shoe Depth ft		Tool Type		
No. Centralizers		Top Plugs		Bottom Plugs		Tool Depth ft		
Cement Head Type				Stage Tool Type		Tool Depth ft		
				Stage Tool Depth ft		Tail Pipe Size in		
Job Scheduled For Dec/04/2018		Arrived on Location Dec/04/2018		Leave Location Dec/04/2018		Collar Type		
						Collar Depth ft		
						Sqz. Total Vol. bbl		
Date	Time 24-hr clock	Treating Pressure PSI	Flow Rate B/M	Density LB/G	Volume BBL	Message		
12/04/2018	13:57:39	5	0.0	8.71	0.0	Start Job		
12/04/2018	13:57:40	5	0.0	8.74	0.0	Start Pumping Water		
12/04/2018	14:00:51	874	0.8	8.26	5.0	End Water		
12/04/2018	14:00:52	183	0.4	8.26	5.0	Reset Total, Vol = 5.0 bbl		
12/04/2018	14:01:09	-9	0.0	8.26	0.1	Pressure Test Lines		
12/04/2018	14:03:30	-5	0.0	8.25	0.1	Start Cement Slurry		
12/04/2018	14:10:39	124	0.6	14.91	9.0	End Cement Slurry		
12/04/2018	14:10:51	69	0.6	8.36	9.4	Reset Total, Vol = 10.9 bbl		
12/04/2018	14:11:08	60	0.5	9.47	0.6	Start Displacement		
12/04/2018	14:19:07	1053	0.9	8.26	24.0	End Displacement		
12/04/2018	14:19:10	1076	0.9	8.26	24.2	Reset Total, Vol = 24 bbl		

Well	Field	Job Start	Customer	Job Number
DAVIS-7-14 0630561130	DJ	Dec/04/2018	ANADARKO PETROLEUM	2879506

Post Job Summary

Average Pump Rates, bbl/min					Volume of Fluid Injected, bbl					
Slurry 2.5	N2	Mud	Maximum Rate 3.1		Total Slurry 10.9	Mud 0.0	Spacer 5.0	N2		
Treating Pressure Summary, psi					Breakdown Fluid					
Maximum 2531	Final -9	Average 655	Bump Plug to	Breakdown	Type		Volume bbl		Density lb/gal	
Avg. N2 Percent %		Designed Slurry Volume 10.9 bbl		Displacement 24.0 bbl		Mix Water Temp 51 degF		Cement Circulated to Surface? <input type="checkbox"/>		Volume bbl
								Washed Thru Perfs <input type="checkbox"/>		To ft
Customer or Authorized Representative EDGAR CHAVEZ				Schlumberger Supervisor LUIS JIMENEZ				Circulation Lost <input type="checkbox"/>		Job Completed <input checked="" type="checkbox"/>
								-		-

Well	Davis 7-14	Client	Anadarko
Field	DJ	SIR No.	E84H -00037
Engineer	R Pippin	Job Type	Stub Plug
Country	United States	Job Date	12-06-2018



				Customer Anadarko		Job Number E84H -00037	
Well Davis 7-14		Location (legal)		Schlumberger Location Cheyenne		Job Start Dec/06/2018	
Field DJ		Formation Name/Type		Deviation deg		Well MD 1320.0 ft	
County Weld		State/Province Colorado		Bit Size in		Well TVD 1320.0 ft	
Well Master		API/UWI		BHP psi		BHST degF	
Rig Name		Drilled For Oil & Gas		Service Via Land		BHCT degF	
Offshore Zone		Well Class Old		Well Type Workover		Pore Press. Gradient lb/gal	
Drilling Fluid Type		Max. Density lb/gal		Plastic Viscosity cP		Casing/Liner	
						Depth, ft	
						Size, in	
						Weight, lb/ft	
						Grade	
						Thread	
Service Line Cementing		Job Type Stub Plug		T/D		Depth, ft	
						Size, in	
						Weight, lb/ft	
						Grade	
						Thread	
Max. Allowed Tub. Press psi		Max. Allowed Ann. Press psi		WH Connection 2 3/8" 4.7# T/S		Perforations/Open Hole	
						Top, ft	
						Bottom, ft	
						shot/ft	
						No. of Shots	
						Total Interval ft	
Service Instructions 250 sks 1.55ft3/sk 7.914 gps 69 bbls @ 14 ppg 15 bbls Fresh Water 69 bbls CMT @ 14 ppg 2 bbls Displacement EST TOC 531 FT						ft	
						ft	
						ft	
						Diameter in	
						Treat Down Tubing	
						Displacement 2.0 bbl	
						Packer Type	
						Packer Depth ft	
						Tubing Vol. 5.1 bbl	
						Casing Vol. bbl	
						Annular Vol. bbl	
						Openhole Vol. bbl	
Casing/Tubing Secured <input checked="" type="checkbox"/>		1 Hole Vol. Circulated prior to Cement <input checked="" type="checkbox"/>		Casing Tools		Squeeze Job	
Lift Pressure psi				Shoe Type		Squeeze Type	
Pipe Rotated <input type="checkbox"/>		Pipe Reciprocated <input type="checkbox"/>		Shoe Depth ft		Tool Type	
No. Centralizers		Top Plugs		Bottom Plugs		Tool Depth ft	
Cement Head Type				Stage Tool Type		Tool Depth ft	
Job Scheduled For Dec/06/2018		Arrived on Location Dec/06/2018		Leave Location Dec/06/2018		Stage Tool Depth ft	
						Tail Pipe Size in	
						Collar Type	
						Tail Pipe Depth ft	
						Collar Depth ft	
						Sqz. Total Vol. bbl	
Date	Time 24-hr clock	Treating Pressure PSI	Flow Rate B/M	Density LB/G	Volume BBL	Message	
12/06/2018	09:52:34	31	0.0	8.44	0.0	Water Test Complete	
12/06/2018	09:52:37	31	0.0	8.44	0.0	Start Job	
12/06/2018	09:52:38	31	0.0	8.44	0.0	Start Pumping Wash	
12/06/2018	09:57:35	365	3.3	8.44	11.3		
12/06/2018	09:58:49	374	3.3	8.44	15.4	End Wash	
12/06/2018	09:58:50	379	3.3	8.44	15.4	Reset Total, Vol = 15.60 bbl	
12/06/2018	09:59:31	2384	0.0	8.44	15.6	Pressure Test Lines	
12/06/2018	10:02:36	54	0.0	9.05	15.6		
12/06/2018	10:03:36	370	0.6	14.32	15.6	Start Cement Slurry	
12/06/2018	10:07:37	805	2.7	14.36	26.8		
12/06/2018	10:12:38	901	2.7	14.15	40.2		
12/06/2018	10:17:39	928	2.7	13.88	53.6		
12/06/2018	10:20:41	1089	2.7	14.17	61.7	End Cement Slurry	
12/06/2018	10:20:44	1015	2.7	12.57	61.8	Reset Total, Vol = 69.23 bbl	
12/06/2018	10:20:46	928	2.7	10.07	61.9	Start Displacement	
12/06/2018	10:21:14	251	-0.2	8.49	63.1	End Displacement	
12/06/2018	10:21:15	118	-1.2	8.50	63.1	Reset Total, Vol = 2.05 bbl	