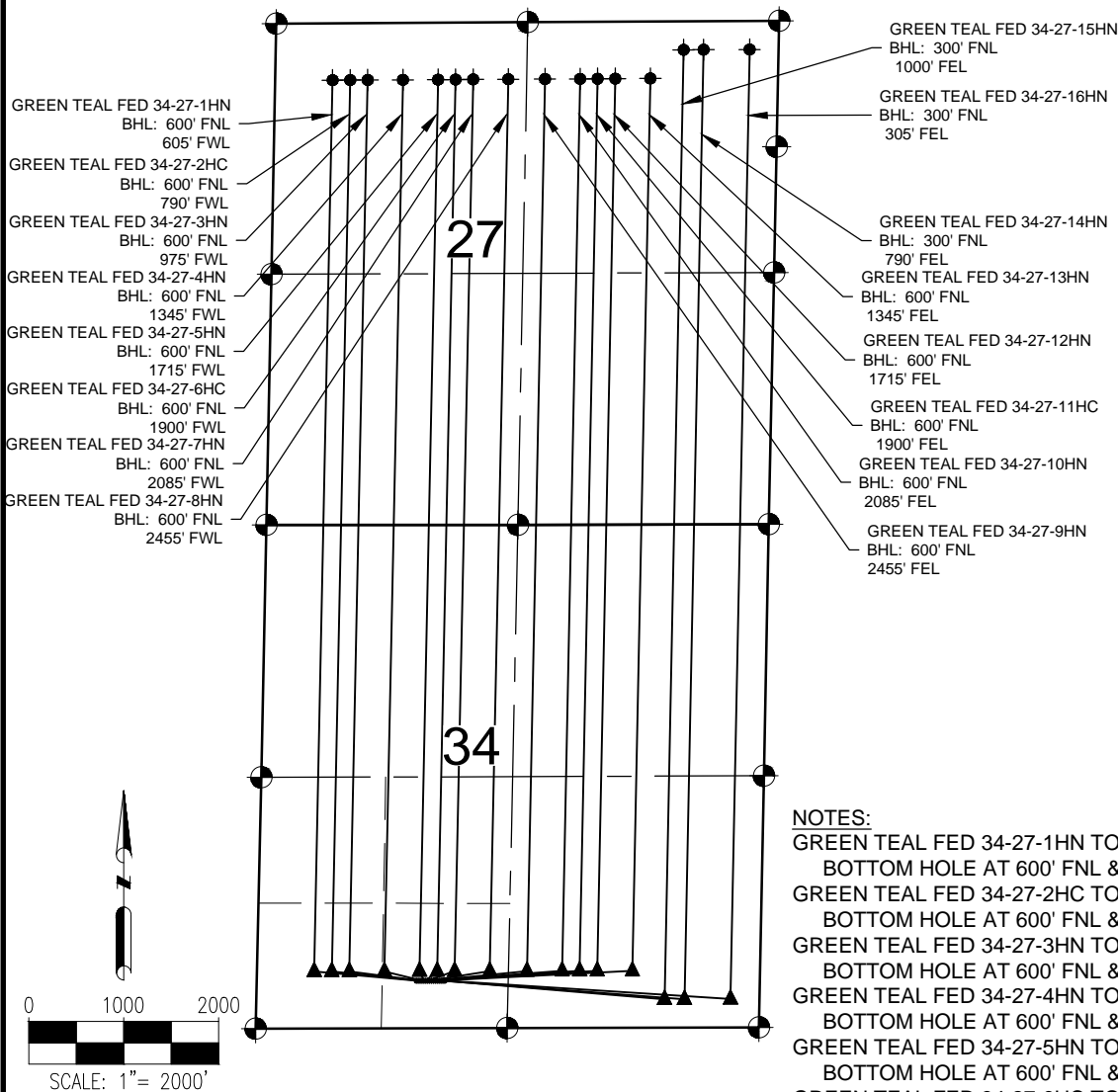


GREEN TEAL PAD MULTI-WELL PLAN



NOTES:

- GREEN TEAL FED 34-27-1HN TO BE AT 500' FSL & 1682' FWL. BOTTOM HOLE AT 600' FNL & 605' FWL, SEC. 27.
- GREEN TEAL FED 34-27-2HC TO BE AT 500' FSL & 1702' FWL. BOTTOM HOLE AT 600' FNL & 790' FWL, SEC. 27.
- GREEN TEAL FED 34-27-3HN TO BE AT 500' FSL & 1722' FWL. BOTTOM HOLE AT 600' FNL & 975' FWL, SEC. 27.
- GREEN TEAL FED 34-27-4HN TO BE AT 500' FSL & 1742' FWL. BOTTOM HOLE AT 600' FNL & 1345' FWL, SEC. 27.
- GREEN TEAL FED 34-27-5HN TO BE AT 500' FSL & 1762' FWL. BOTTOM HOLE AT 600' FNL & 1715' FWL, SEC. 27.
- GREEN TEAL FED 34-27-6HC TO BE AT 500' FSL & 1782' FWL. BOTTOM HOLE AT 600' FNL & 1900' FWL, SEC. 27.
- GREEN TEAL FED 34-27-7HN TO BE AT 500' FSL & 1802' FWL. BOTTOM HOLE AT 600' FNL & 2085' FWL, SEC. 27.
- GREEN TEAL FED 34-27-8HN TO BE AT 500' FSL & 1822' FWL. BOTTOM HOLE AT 600' FNL & 2455' FWL, SEC. 27.
- GREEN TEAL FED 34-27-9HN TO BE AT 500' FSL & 1842' FWL. BOTTOM HOLE AT 600' FNL & 2455' FEL, SEC. 27.
- GREEN TEAL FED 34-27-10HN TO BE AT 500' FSL & 1862' FWL. BOTTOM HOLE AT 600' FNL & 2085' FEL, SEC. 27.
- GREEN TEAL FED 34-27-11HC TO BE AT 500' FSL & 1882' FWL. BOTTOM HOLE AT 600' FNL & 1900' FEL, SEC. 27.
- GREEN TEAL FED 34-27-12HN TO BE AT 500' FSL & 1902' FWL. BOTTOM HOLE AT 600' FNL & 1715' FEL, SEC. 27.
- GREEN TEAL FED 34-27-13HN TO BE AT 500' FSL & 1922' FWL. BOTTOM HOLE AT 600' FNL & 1345' FEL, SEC. 27.
- GREEN TEAL FED 34-27-14HN TO BE AT 500' FSL & 1942' FWL. BOTTOM HOLE AT 300' FNL & 790' FEL, SEC. 27.
- GREEN TEAL FED 34-27-15HN TO BE AT 500' FSL & 1962' FWL. BOTTOM HOLE AT 300' FNL & 1000' FEL, SEC. 27.
- GREEN TEAL FED 34-27-16HN TO BE AT 500' FSL & 1982' FWL. BOTTOM HOLE AT 300' FNL & 305' FEL, SEC. 27.

LEGEND

- = EXISTING MONUMENT
- = CALCULATED POSITION
- = PROPOSED WELL
- ◆ = EXISTING WELL
- ▲ = BOTTOM HOLE
- ▲ = LANDING POINT
- BHL = BOTTOM HOLE LOCATION

NOTES:

- THIS FIELD SURVEY CONFORMS TO THE MINIMUM STANDARDS SET BY THE C.O.G.C.C., RULE NO. 215
- BEARINGS ARE BASED ON THE ASSUMPTION THAT THE NORTH LINE OF THE NORTHEAST QUARTER OF SECTION 34, BEARS N89°50'58"W BETWEEN THE MONUMENTS SHOWN HEREON.
- FIELD VERIFICATION OF MONUMENTS COMPLETED WITHIN 1 YEAR OF SIGNATURE DATE.