

Inspection Photos

1/08/2019

Operator: OMIMEX PETROLEUM INC - 66190

Location ID: 337512

Inspection Doc. Number: 682504377

Yuma County, CO

Aaron Trujillo
NE Reclamation Specialist
COGCC



Photo 1: Photo taken from the location, facing north. Photo shows vegetation over the reclamation area. Vegetation does not appear to be progressing towards reclamation standards. Vegetation appears to be dead when compared to the reference. Location is not reflective of the reference



Photo 2: Photo taken from the location, facing east. See comments under photo 1.



Photo 3: Photo taken from the location, facing south. See comments under photo 1.



Photo 4: Photo taken from the location, facing west. See comments under photo 1. Photo also shows slopes on the west end of the location remains bare and exposed soil and is at risk to stormwater and sediment erosion degradation.



Photo 5: Photo taken from the adjacent reference area. Vegetation observed on reference includes Yucca, Sand Sage, Blue grama, Sand dropseed, etc...

Inspection Photos
Operator: OMIMEX PETROLEUM INC - 66190
Location ID: 337512

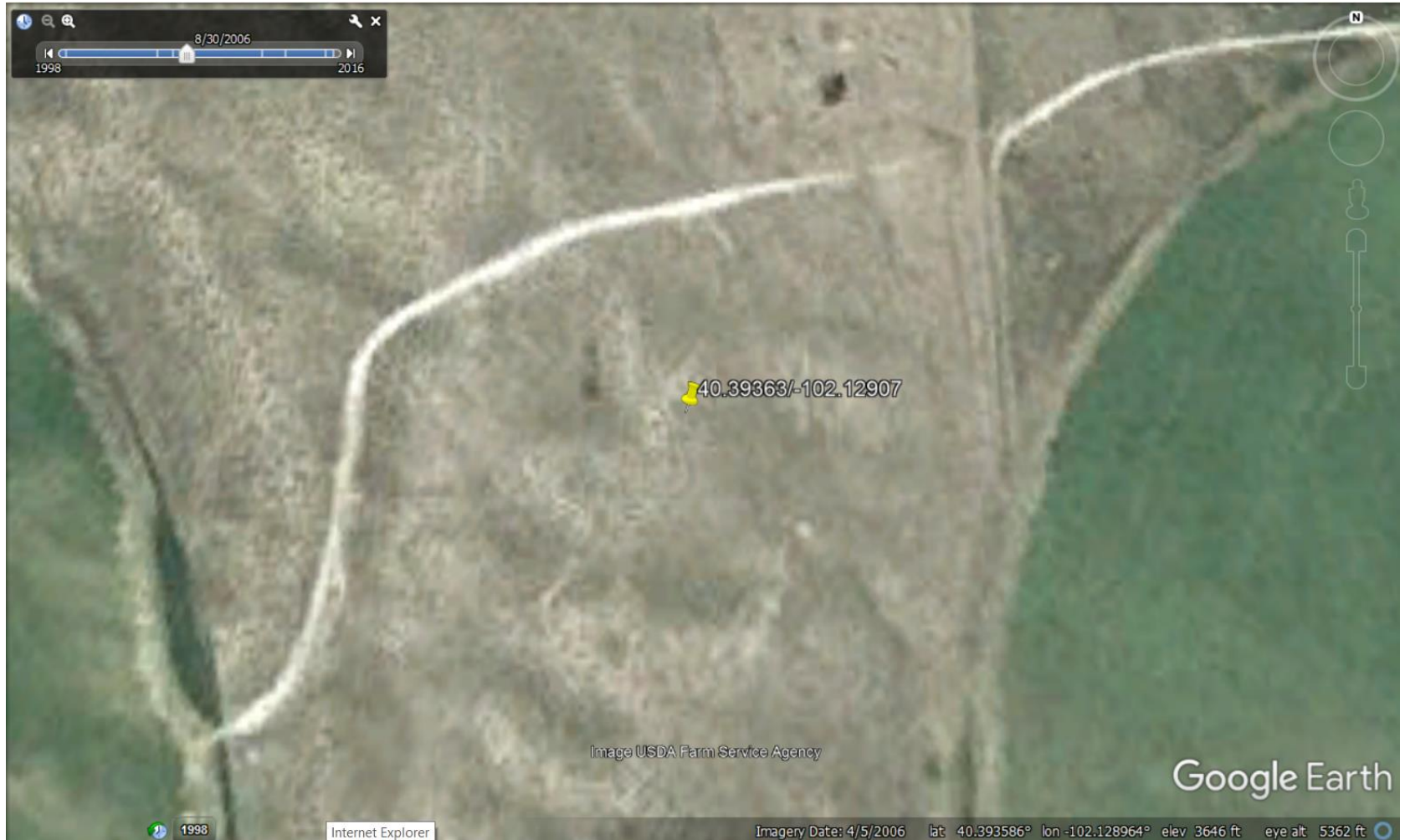


Photo 6: 2006 Google Earth aerial imagery. Photo shows location prior to well be permitted and disturbance.

Inspection Photos
Operator: OMIMEX PETROLEUM INC - 66190
Location ID: 337512

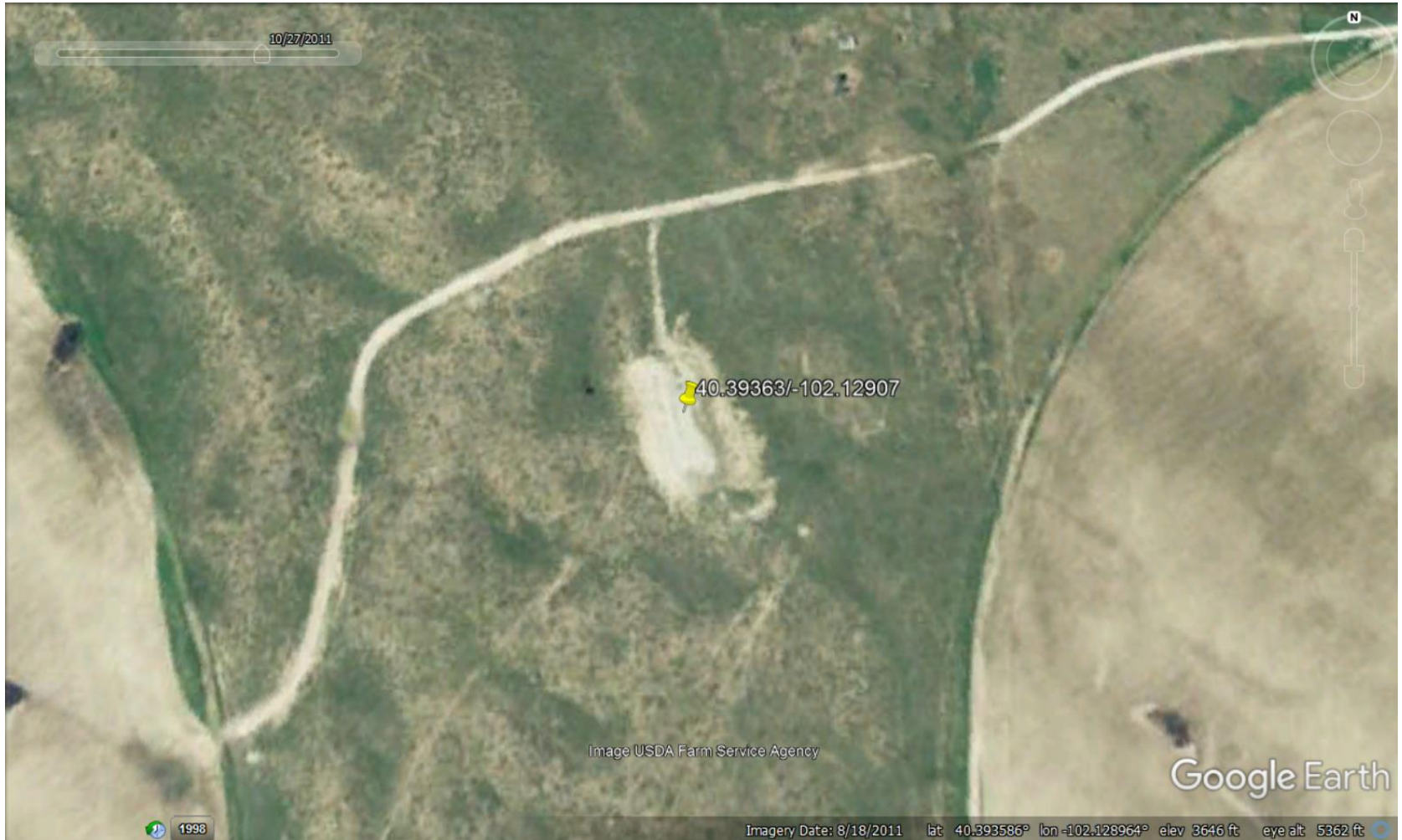


Photo 7: 2011 Google earth aerial imagery. Photo shows location appears to have been constructed and area disturbed.

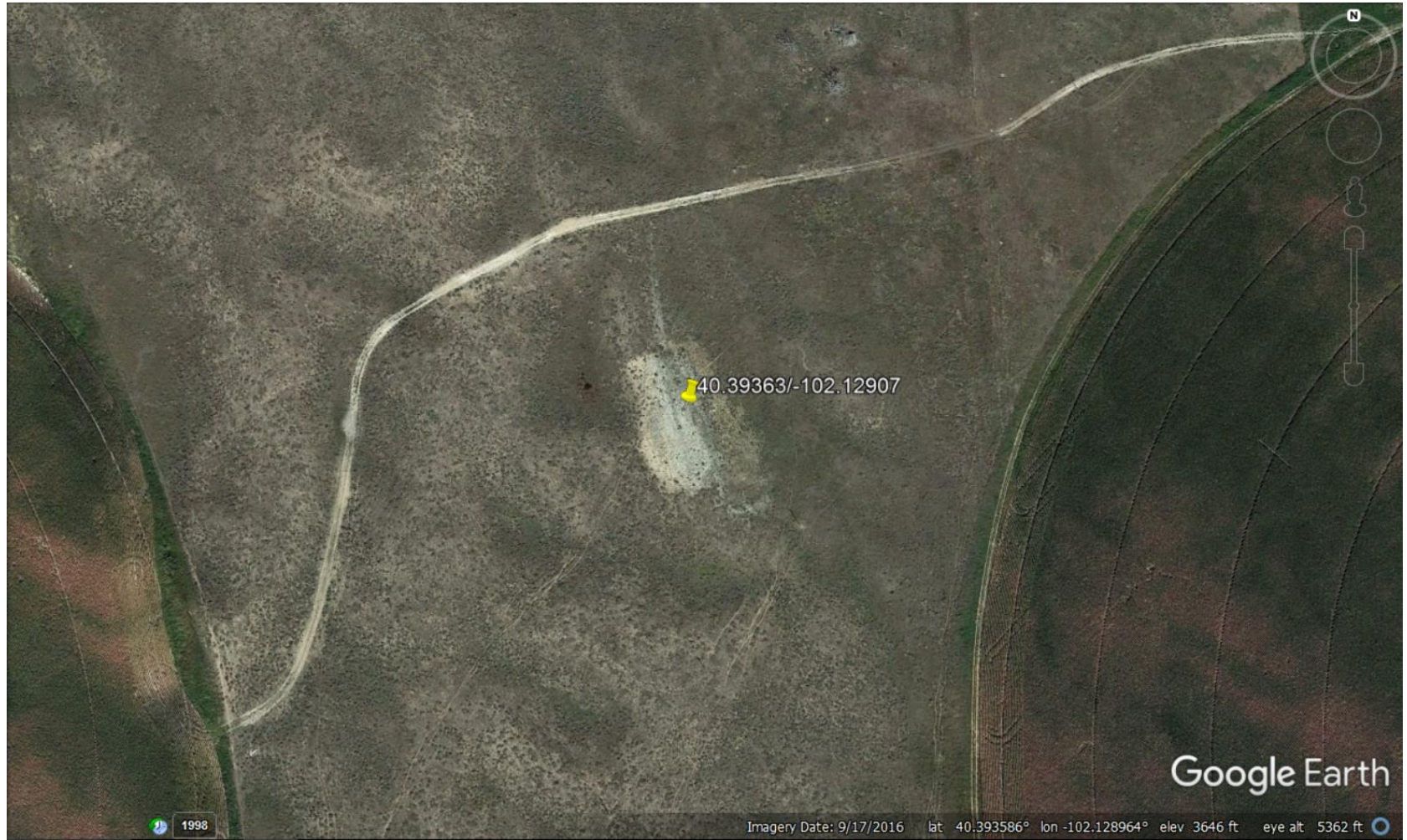


Photo 8: 2016 Google Earth imagery. Most current aerial imagery. Photo shows location disturbance.