

Final Reclamation Inspection

January 2, 2019

Operator: CRESTONE PEAK RESOURCES OPERATING LLC - 10633

API: 05-123-09093

Inspection Document #: 682404377

Weld County, CO

SWNE Section 7 T1N R68W

Chris Binschus
Reclamation Specialist, COGCC



COLORADO
Oil & Gas Conservation
Commission

Department of Natural Resources

Inspection Photos
Location Name: WOOLLEY A #1-7
API: 05-123-09093



Photo 1. Photo taken from the PA well location, facing South. Operator has failed to perform final reclamation activities (i.e., remove gravel, decompaction, seedbed prep, ect.) Reference areas are cropland and appear to be planted with winter wheat.



Inspection Photos
Location Name: WOOLLEY A #1-7
API: 05-123-09093



Photo 1. Photo taken from the PA well location, facing North. See comments under Photo 1.

Inspection Photos
Location Name: WOOLLEY A #1-7
API: 05-123-09093



Photo 3. Photo taken from the PA well location. Operator shall remove the trash per Rule 603.f.

Inspection Photos
Location Name: WOOLLEY A #1-7
API: 05-123-09093

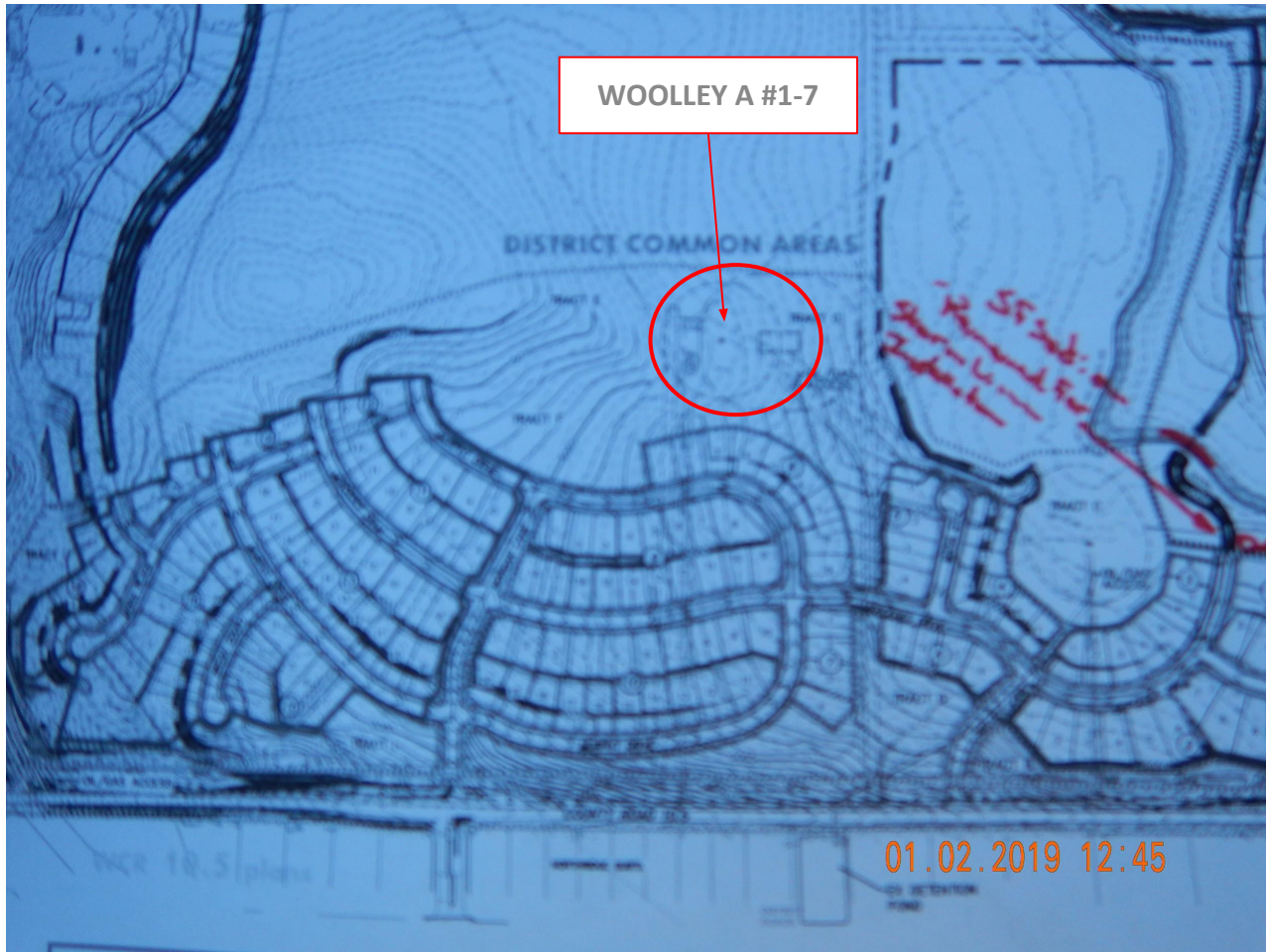


Photo 4. City of Erie housing development is planned for the adjacent areas south of the location but not for the oil and gas location.