



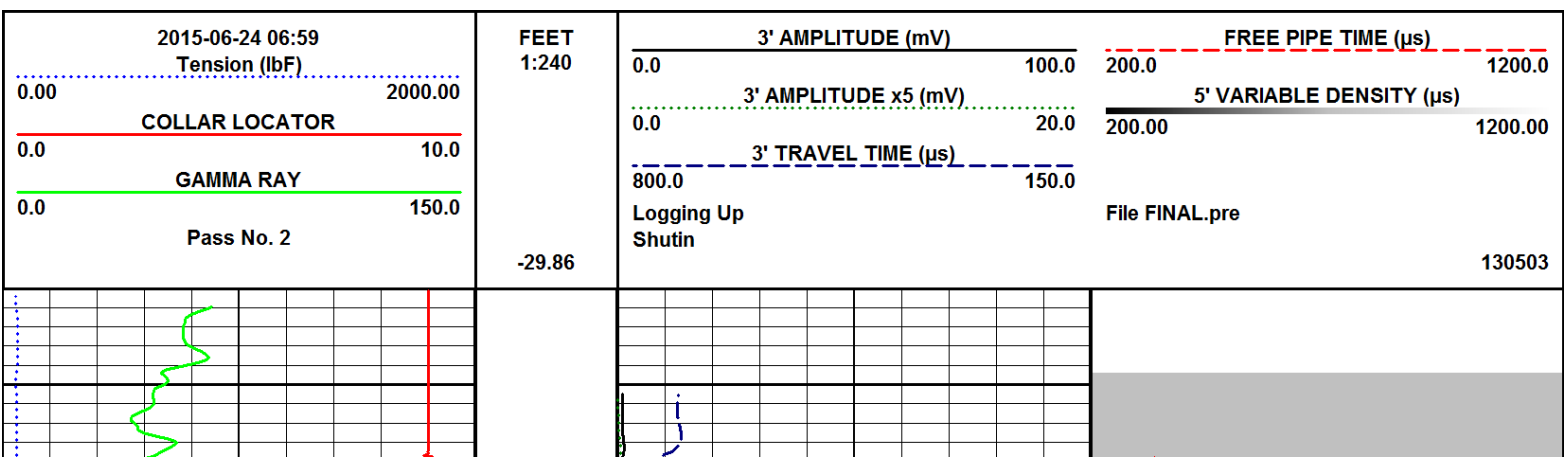
**CEMENT BOND
GAMMA RAY
CCL**

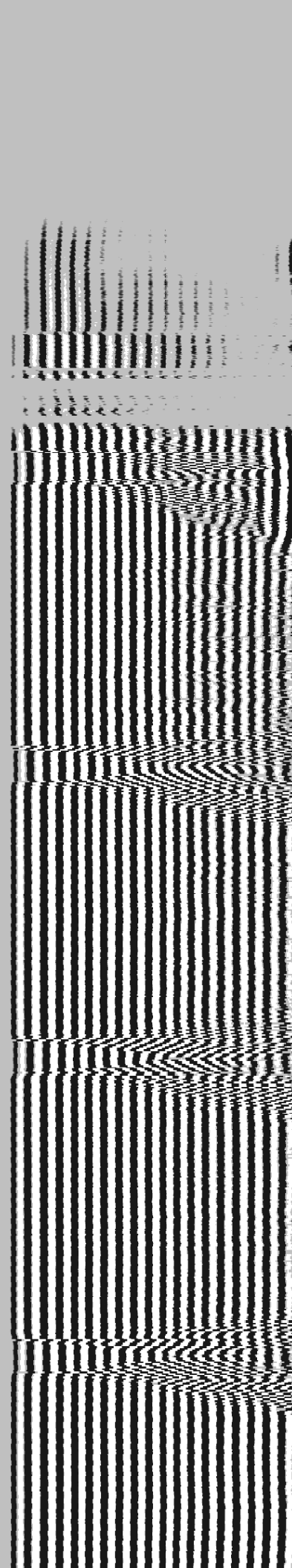
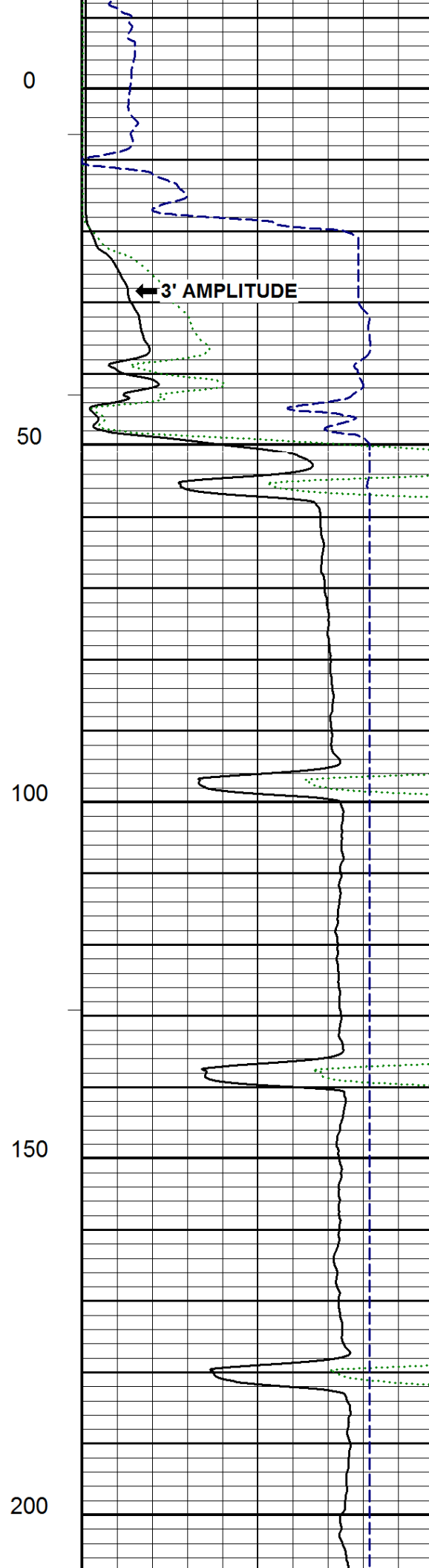
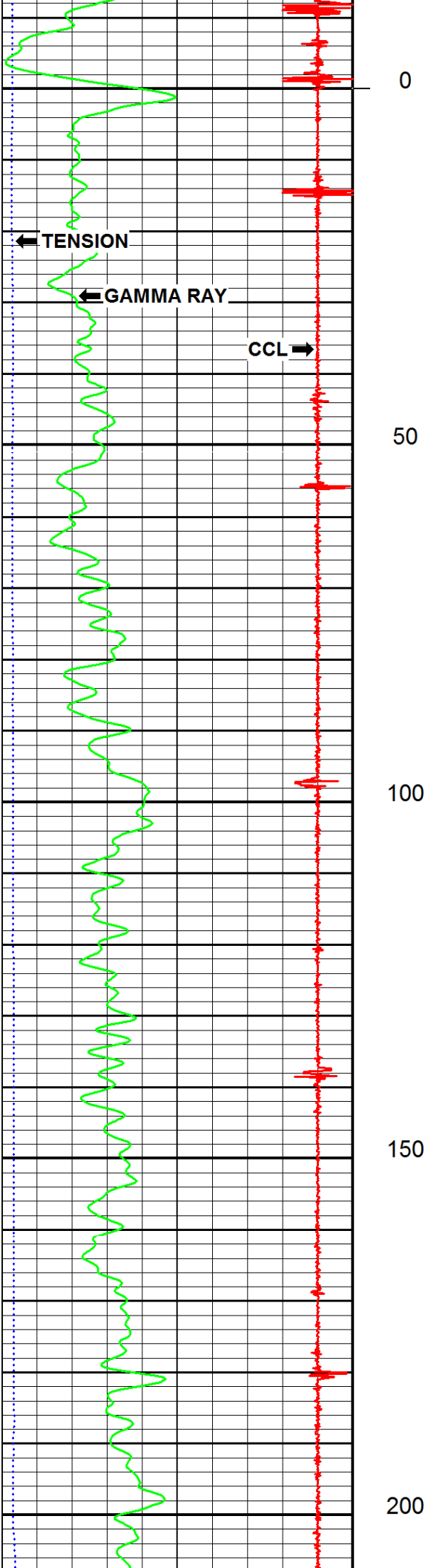
[illegible]

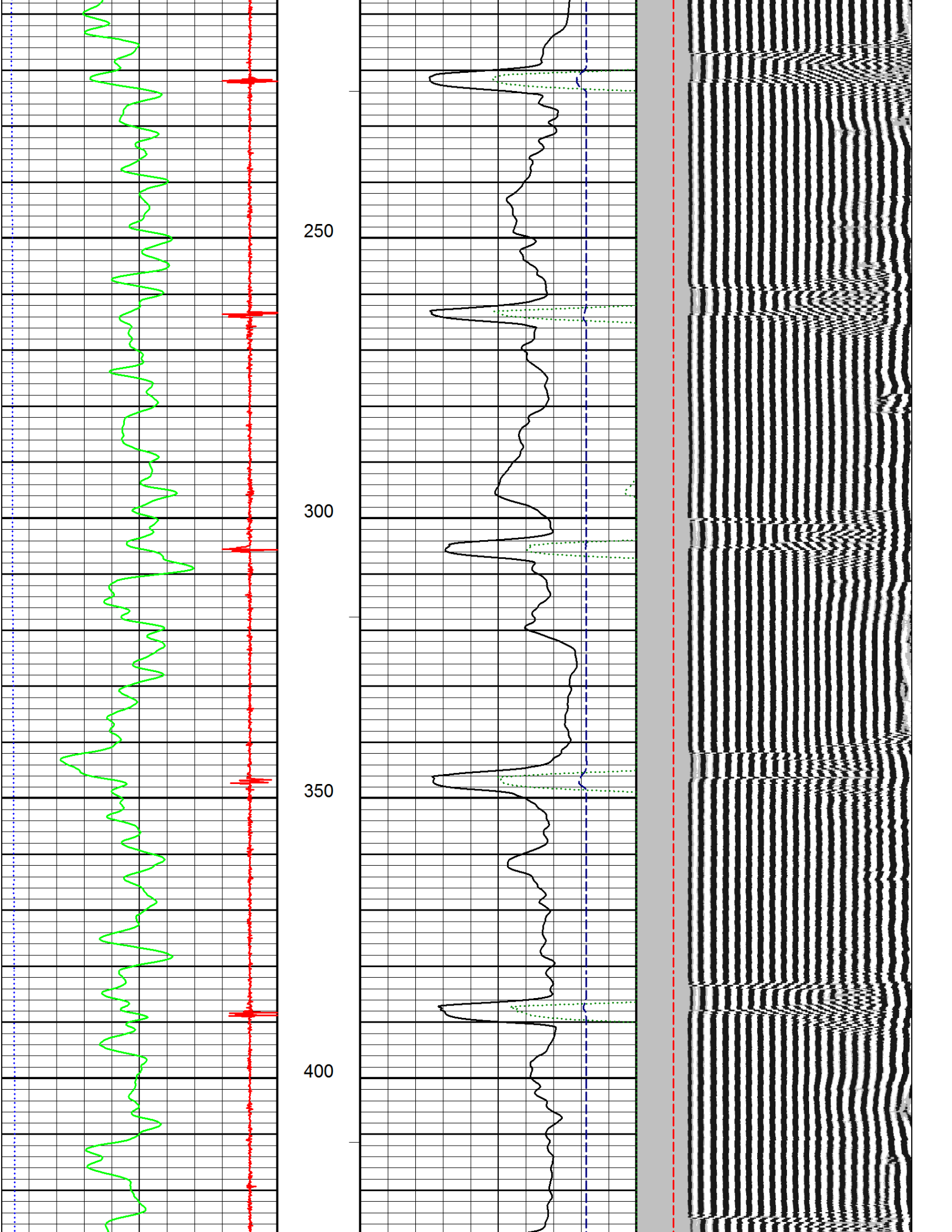
Remarks:

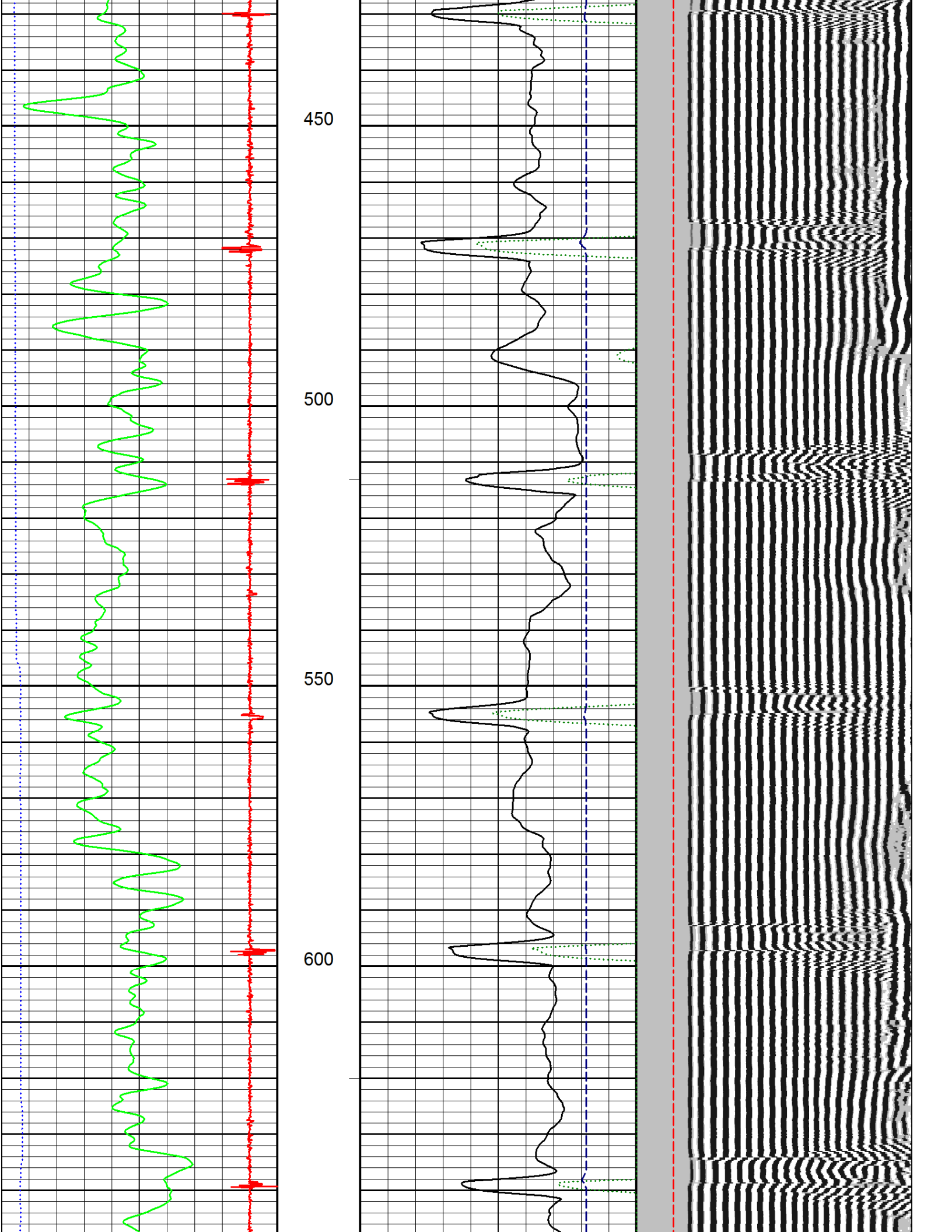
Previous Well Information	
Depth Control Log	
Perforated	
Bridge Plug Set At	
Cement Retainer Set At	
Production Packer Set At	

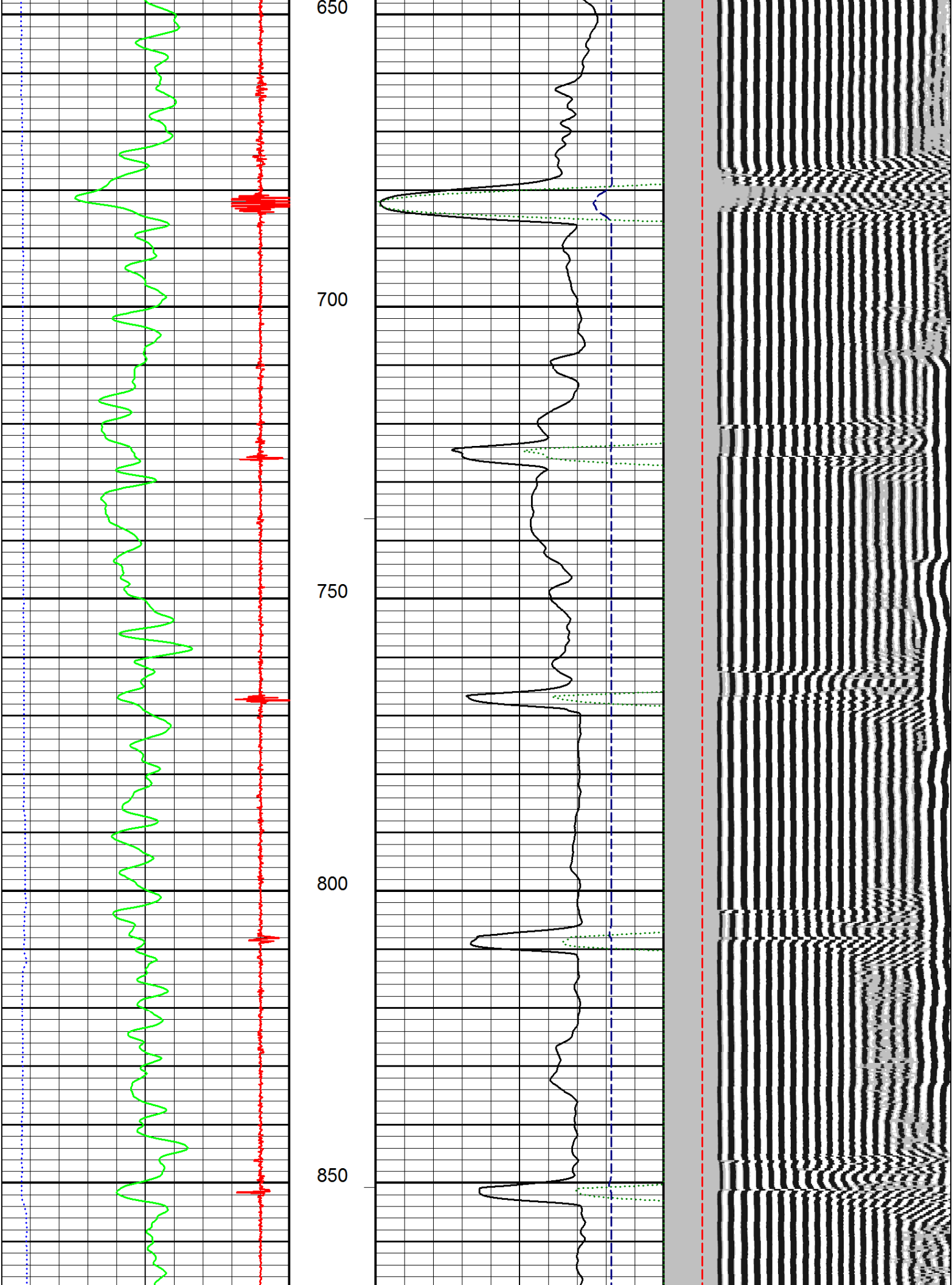
All interpretations are opinions based on inferences from electrical or other measurements and we cannot, and do not guarantee the accuracy or correctness of any interpretations, and we shall not, except in the case of gross or willful negligence on our part, be liable or responsible for any loss, costs, damages or expenses incurred or sustained by anyone resulting from any interpretation made by any of our officers, agents, or employees. These interpretations are also subject to our general terms and conditions as set out in our current price schedule.

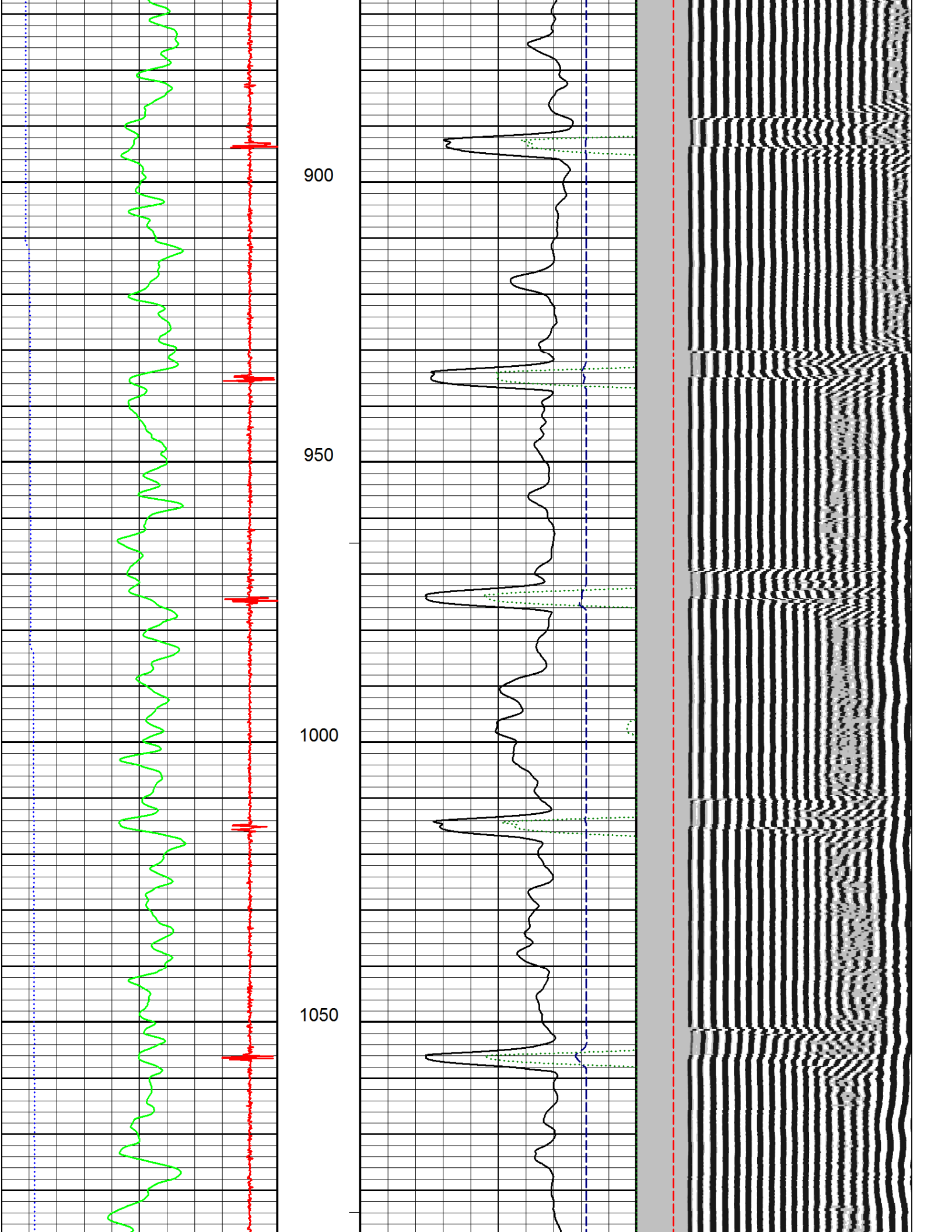


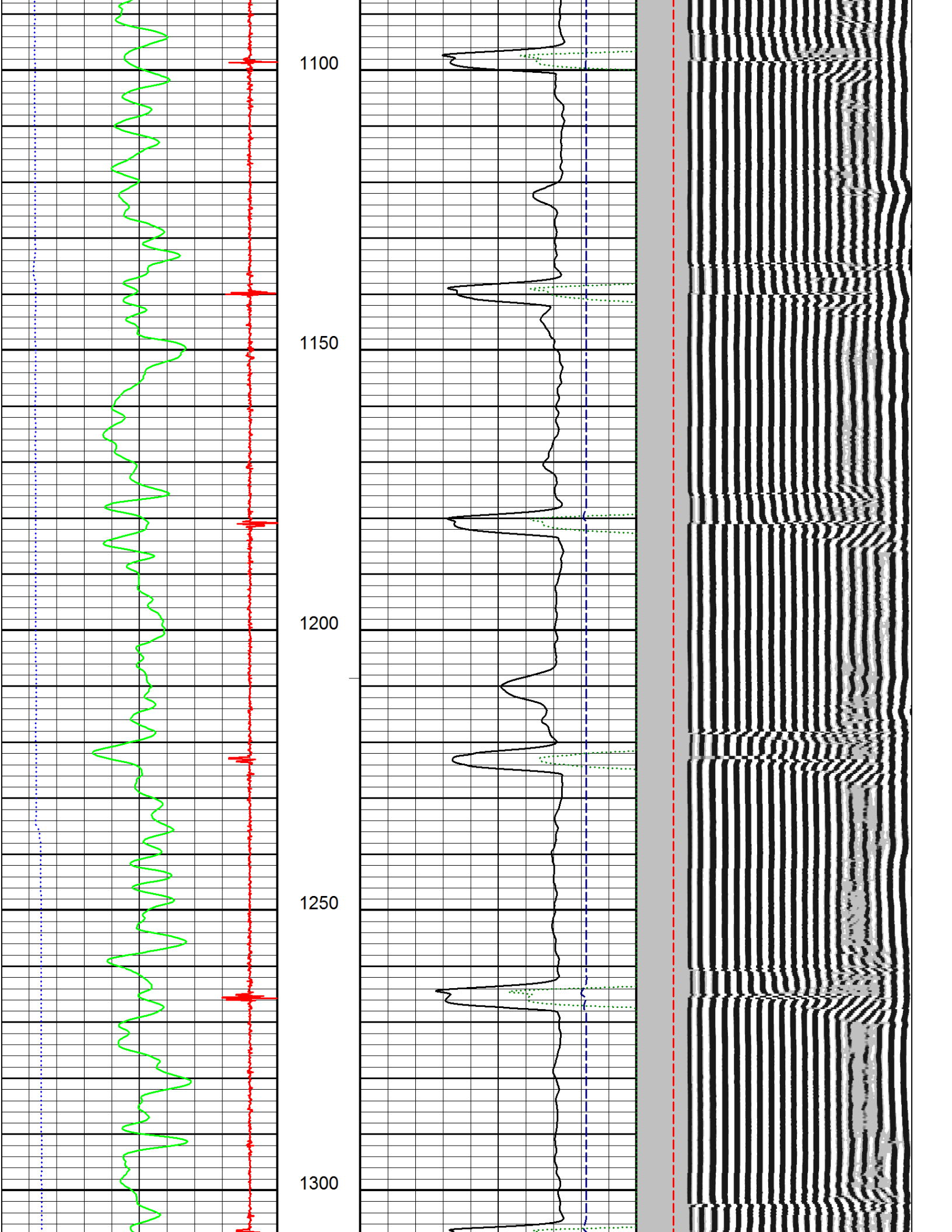


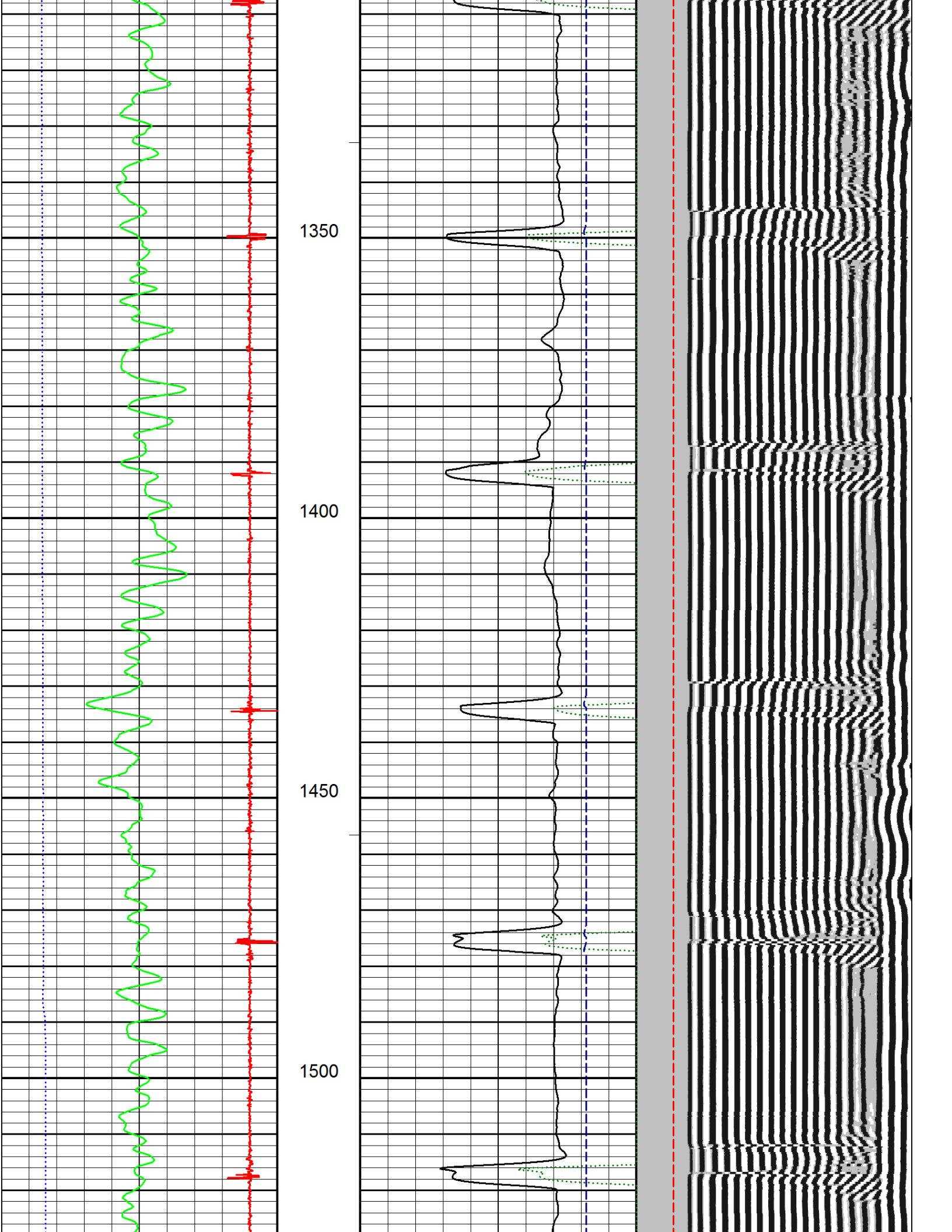


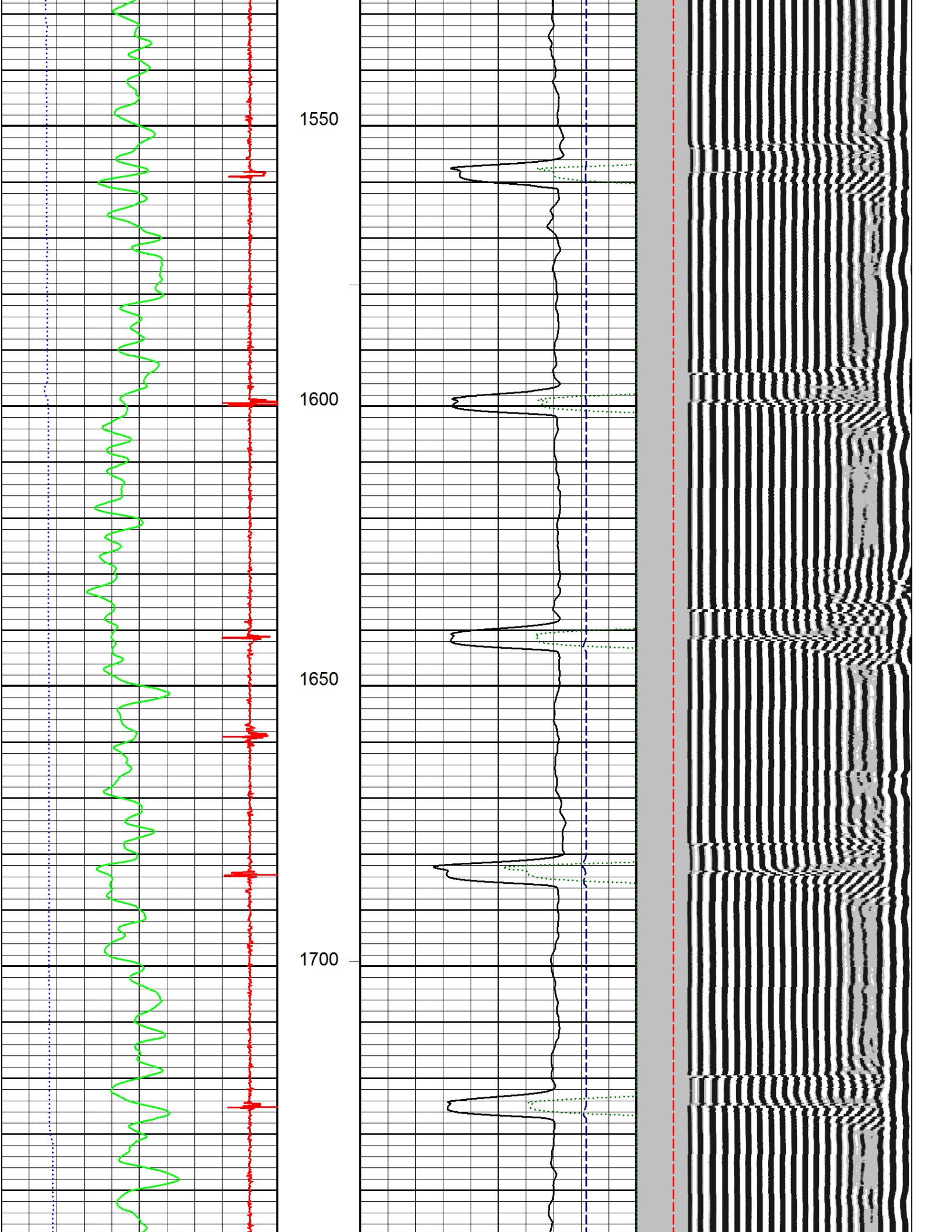


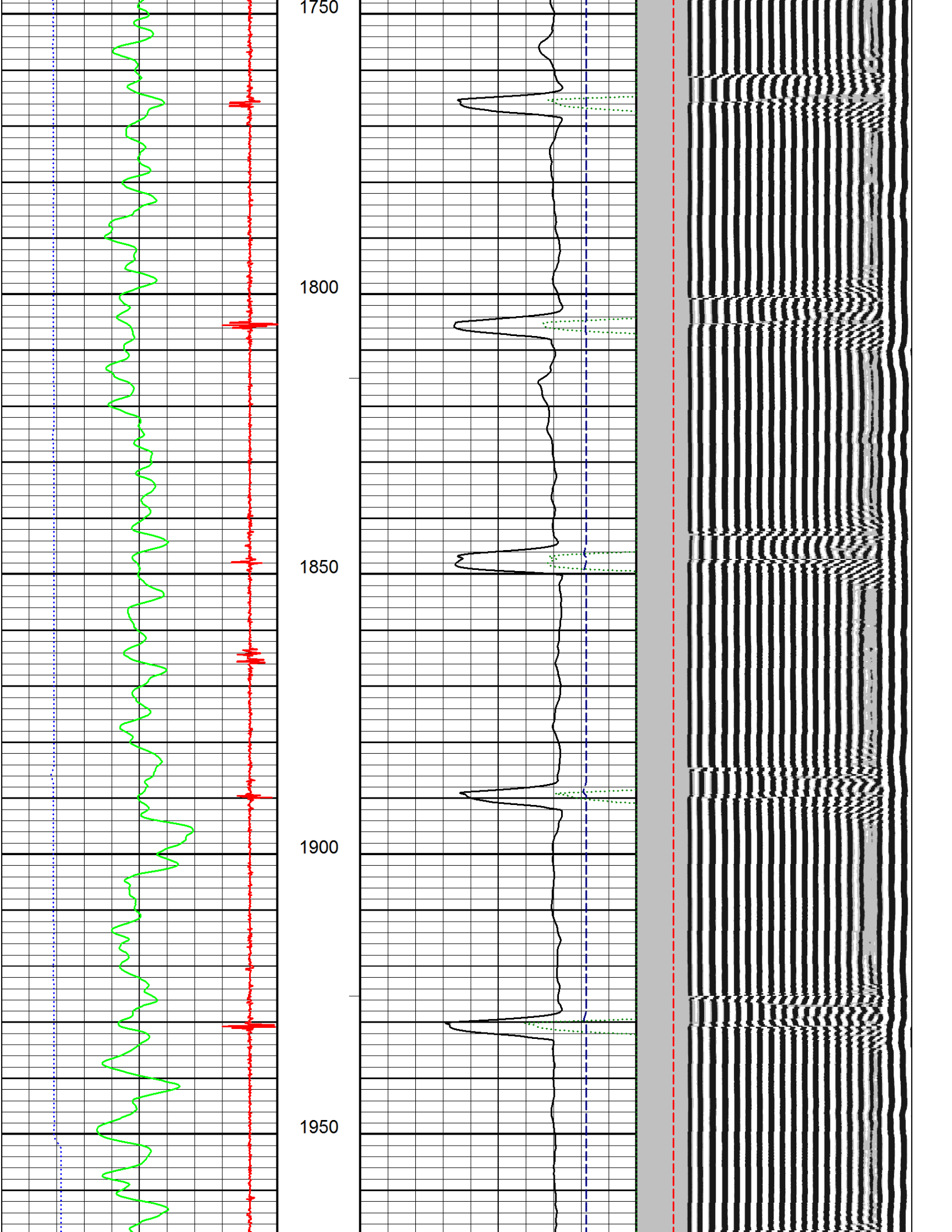


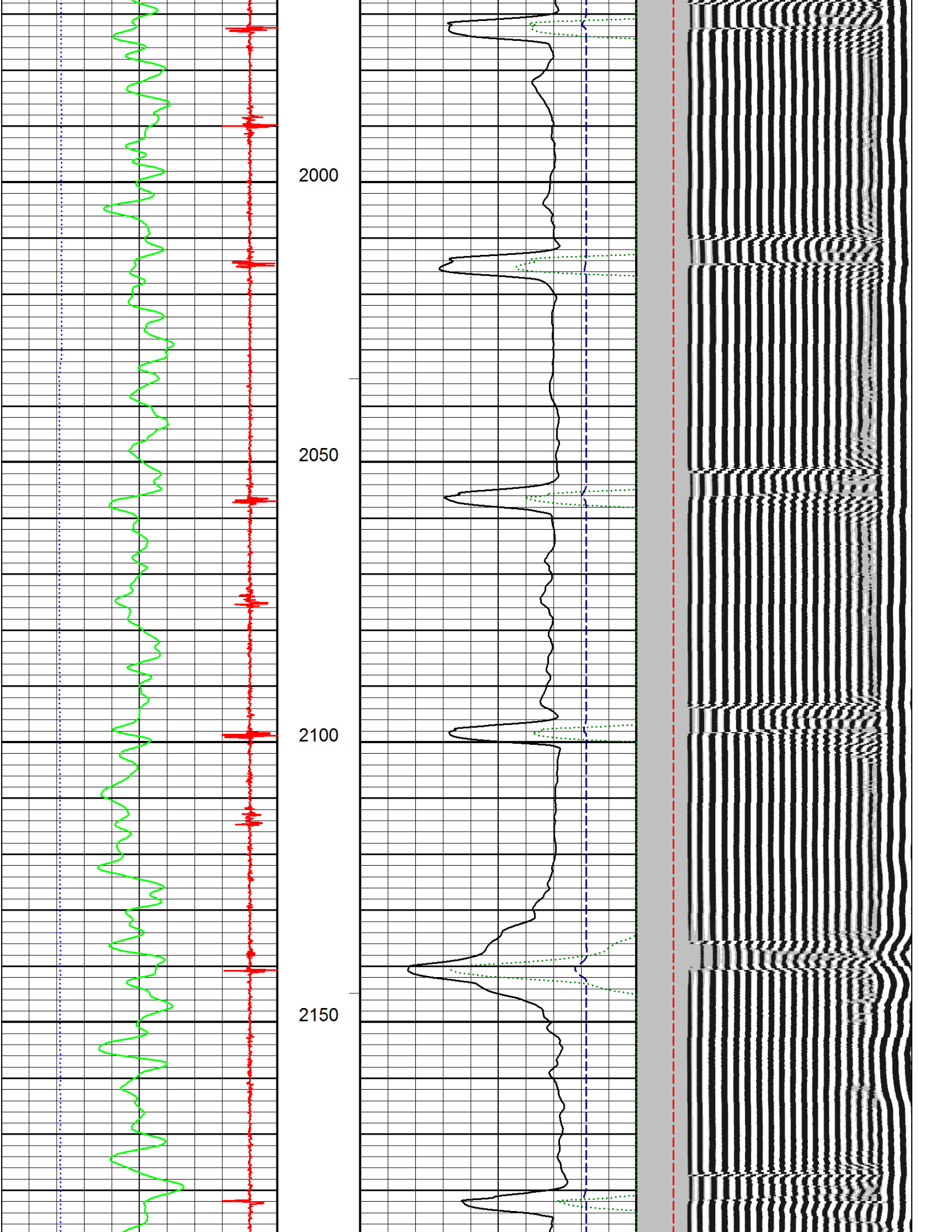


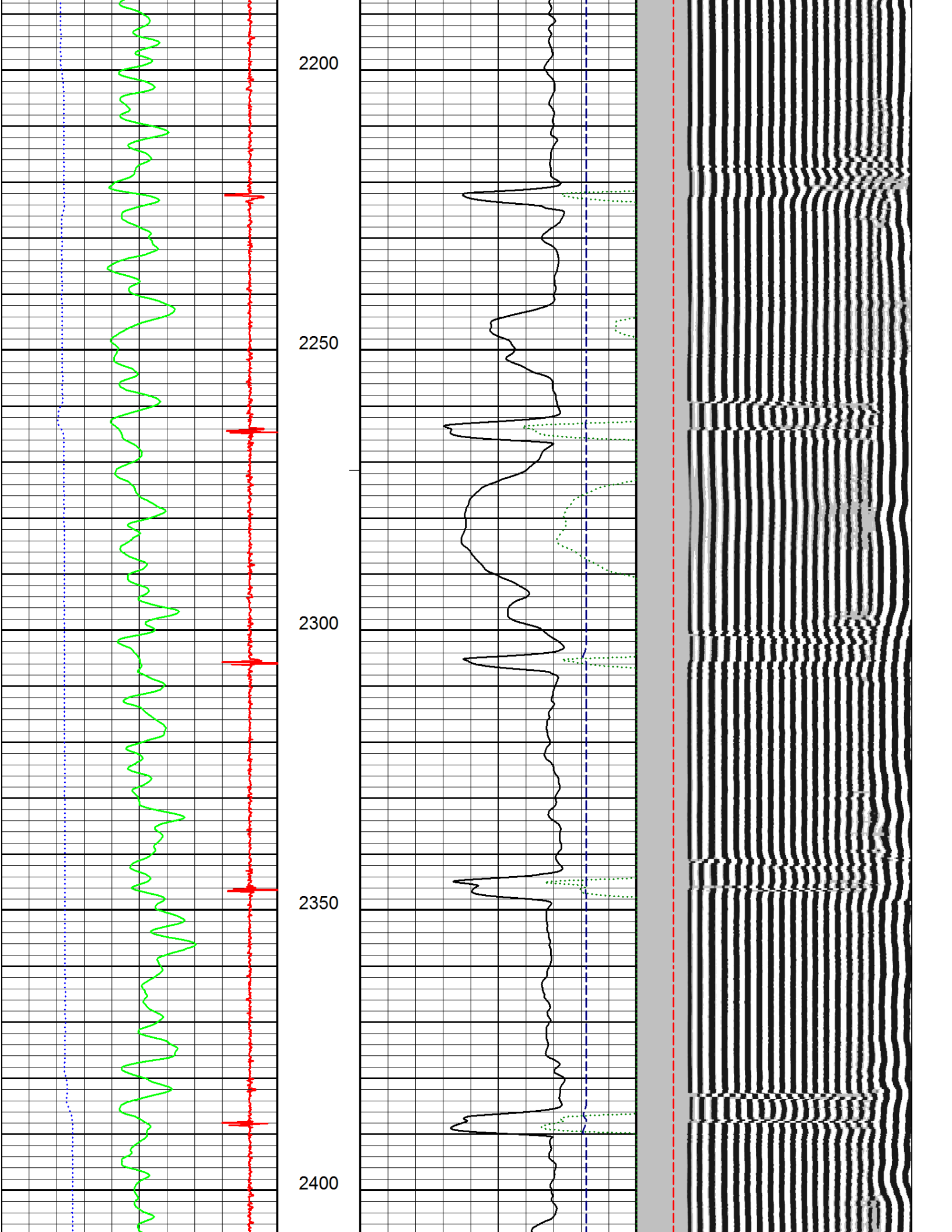


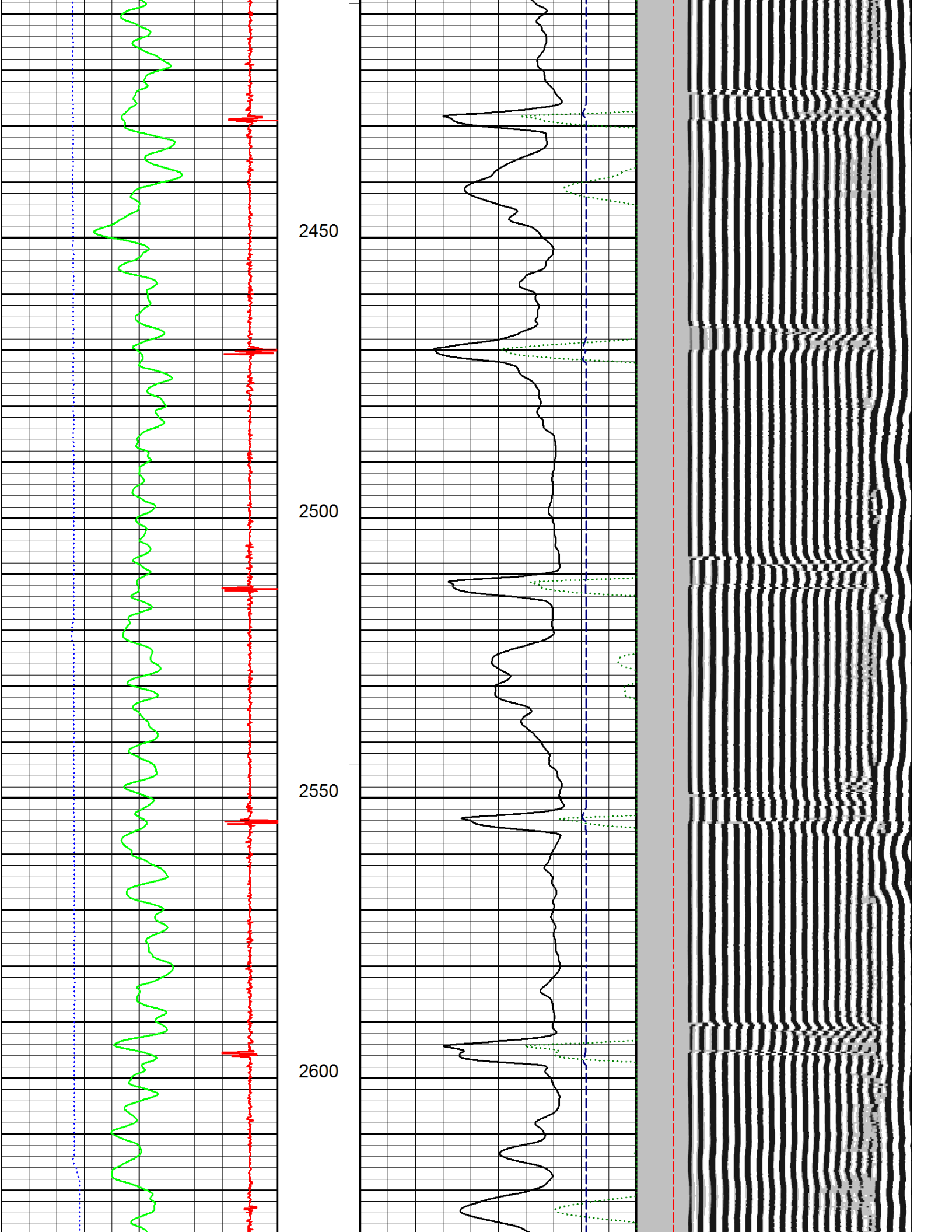


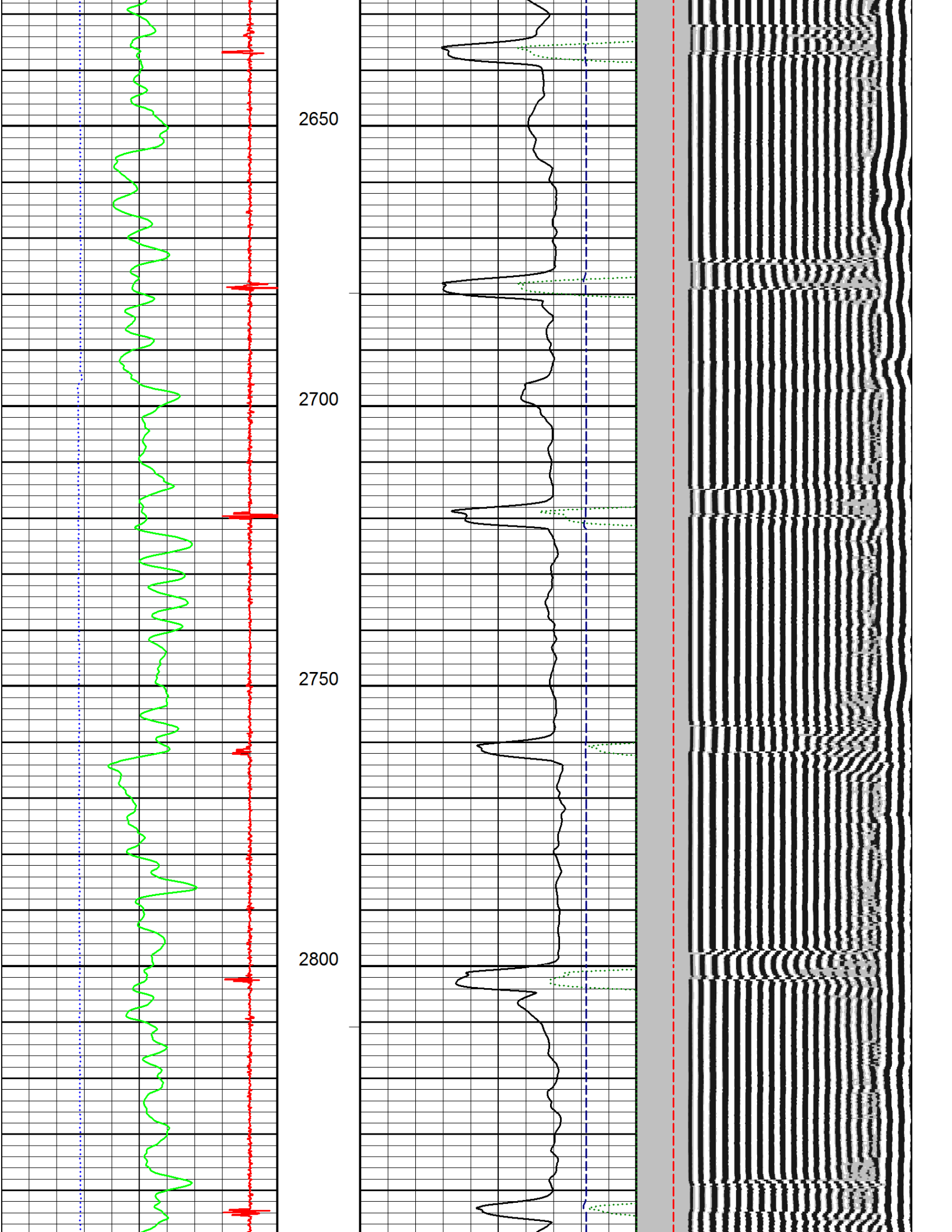


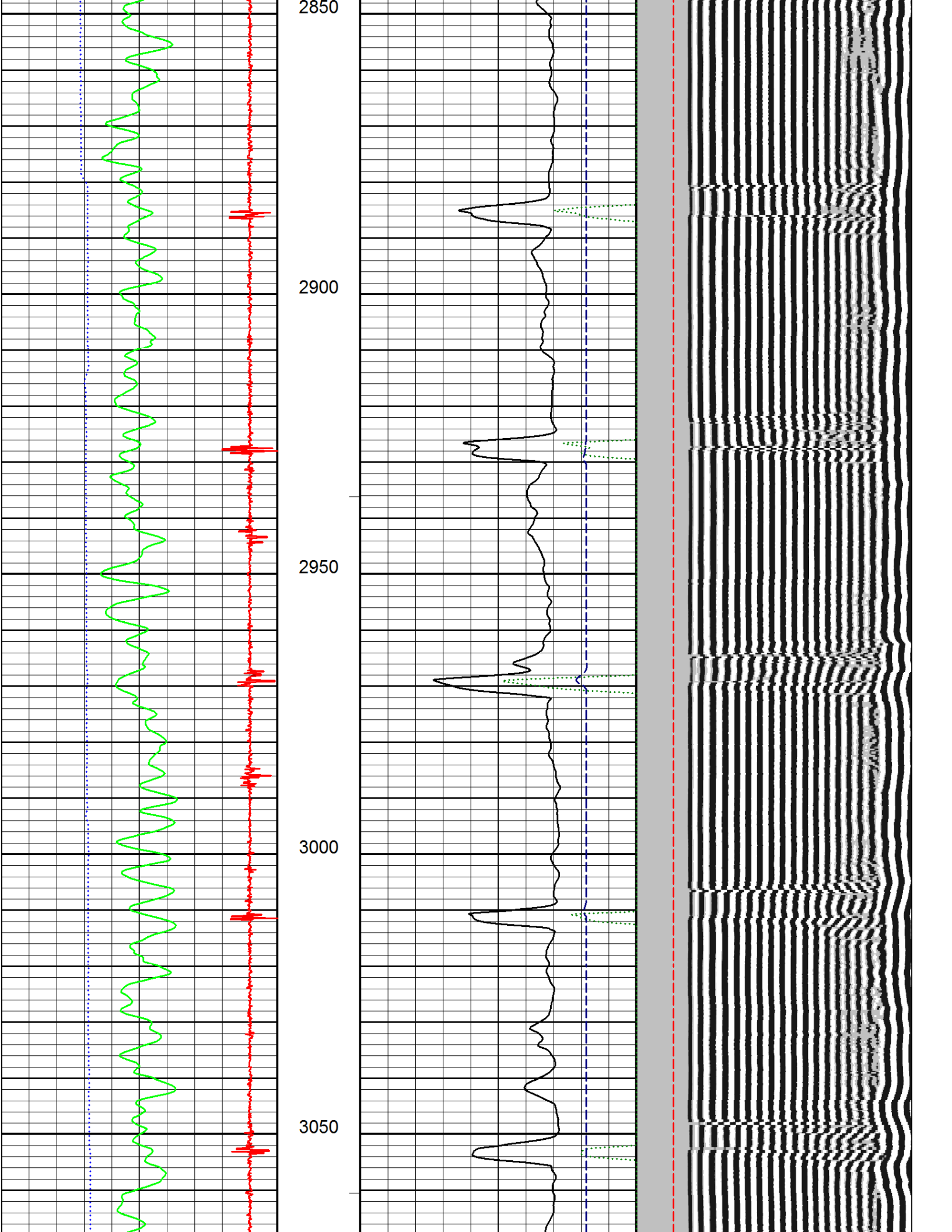


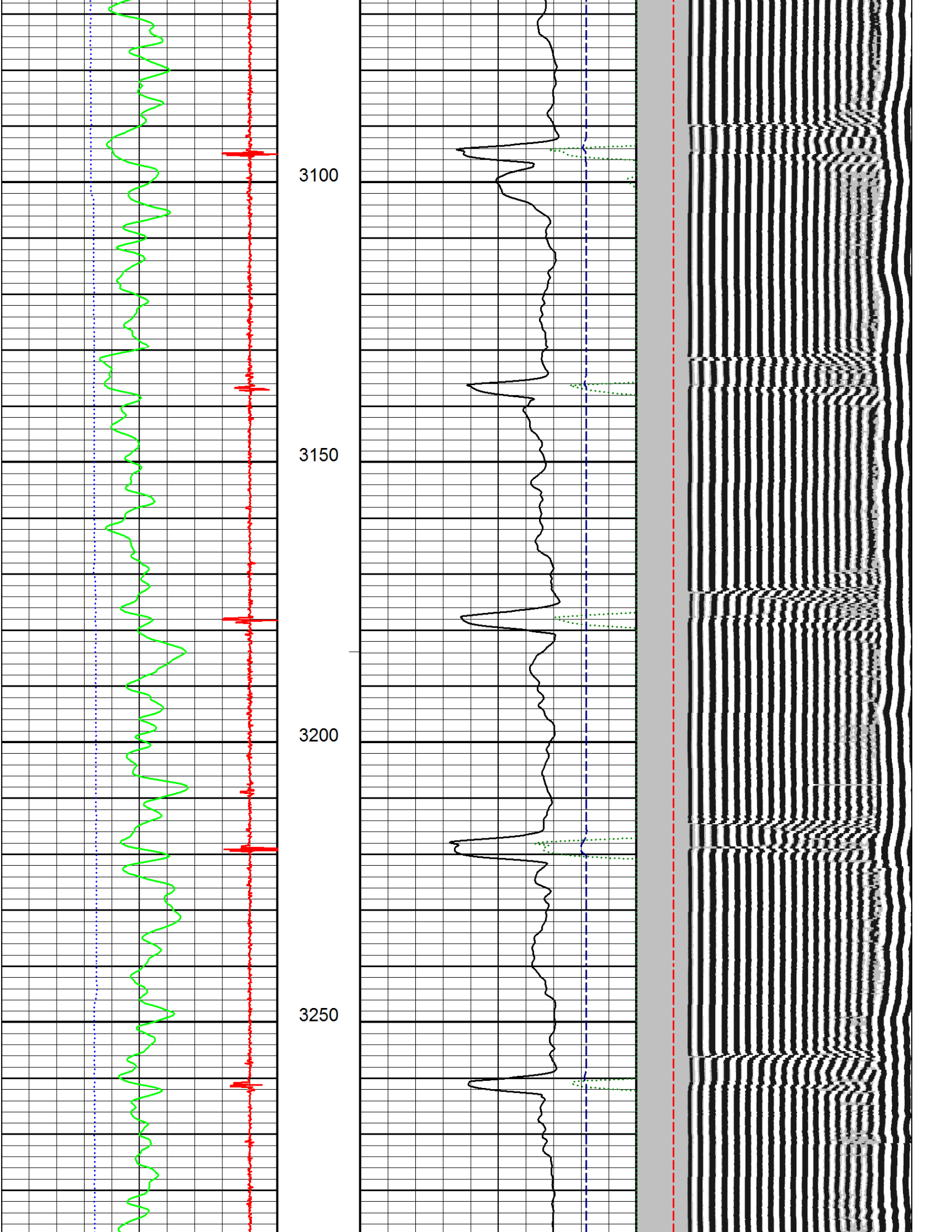


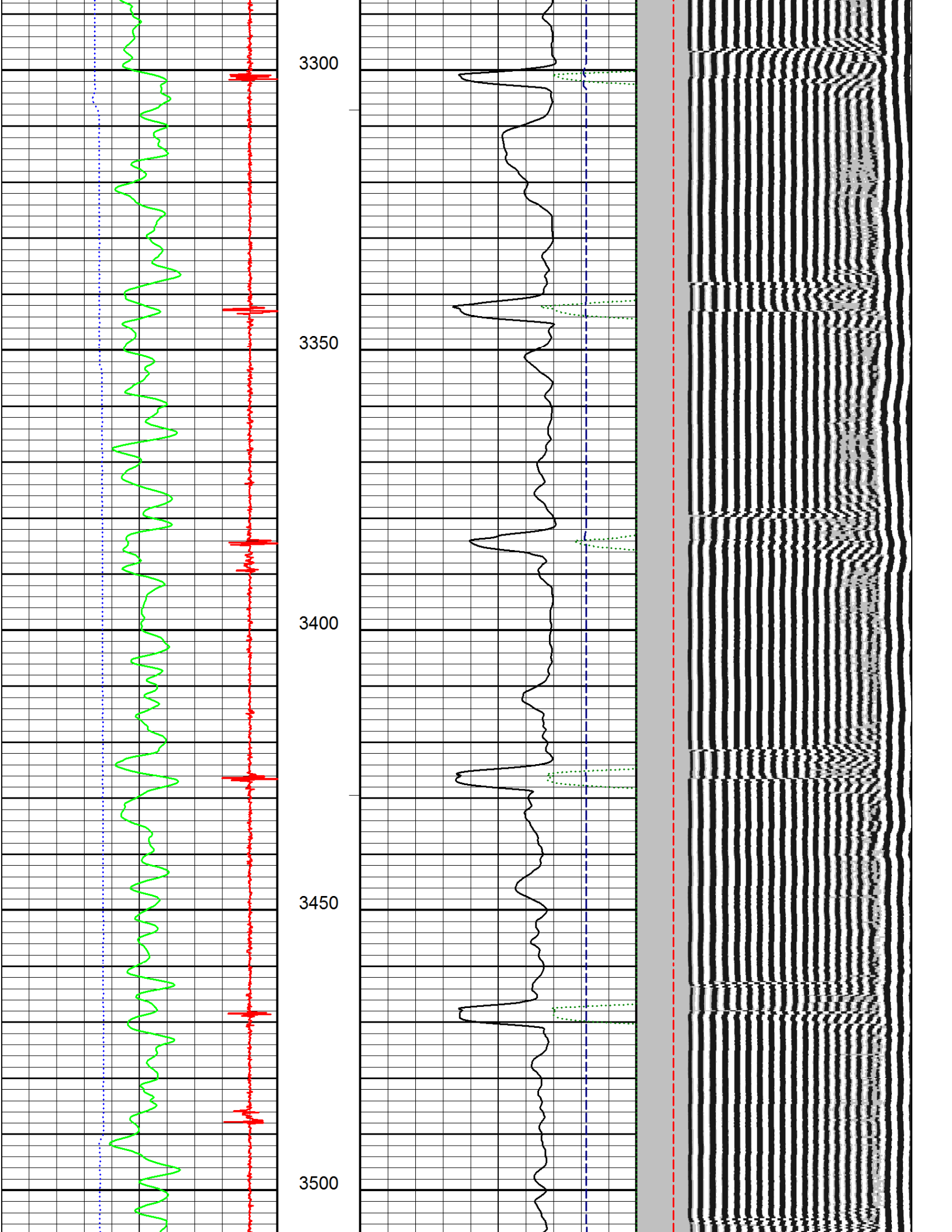


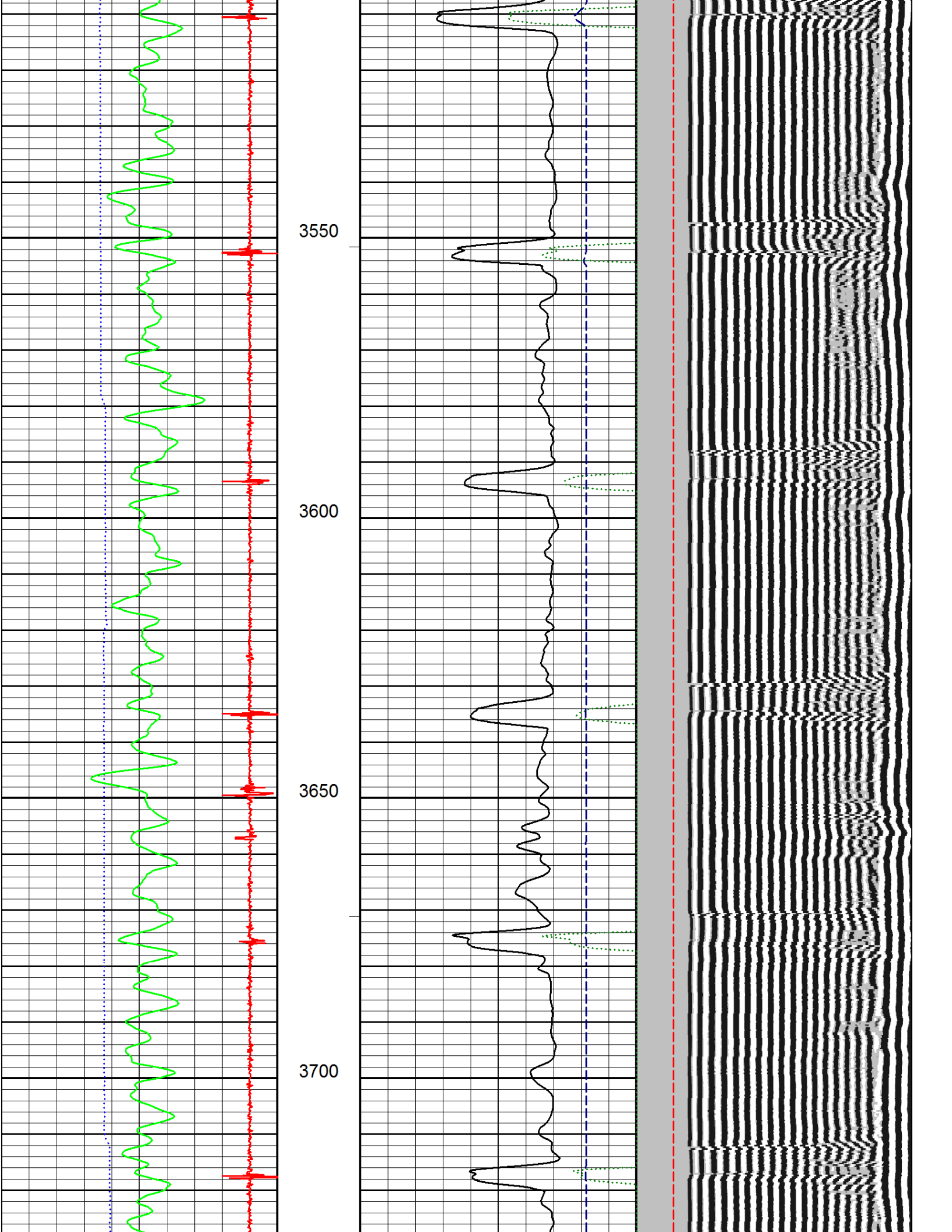


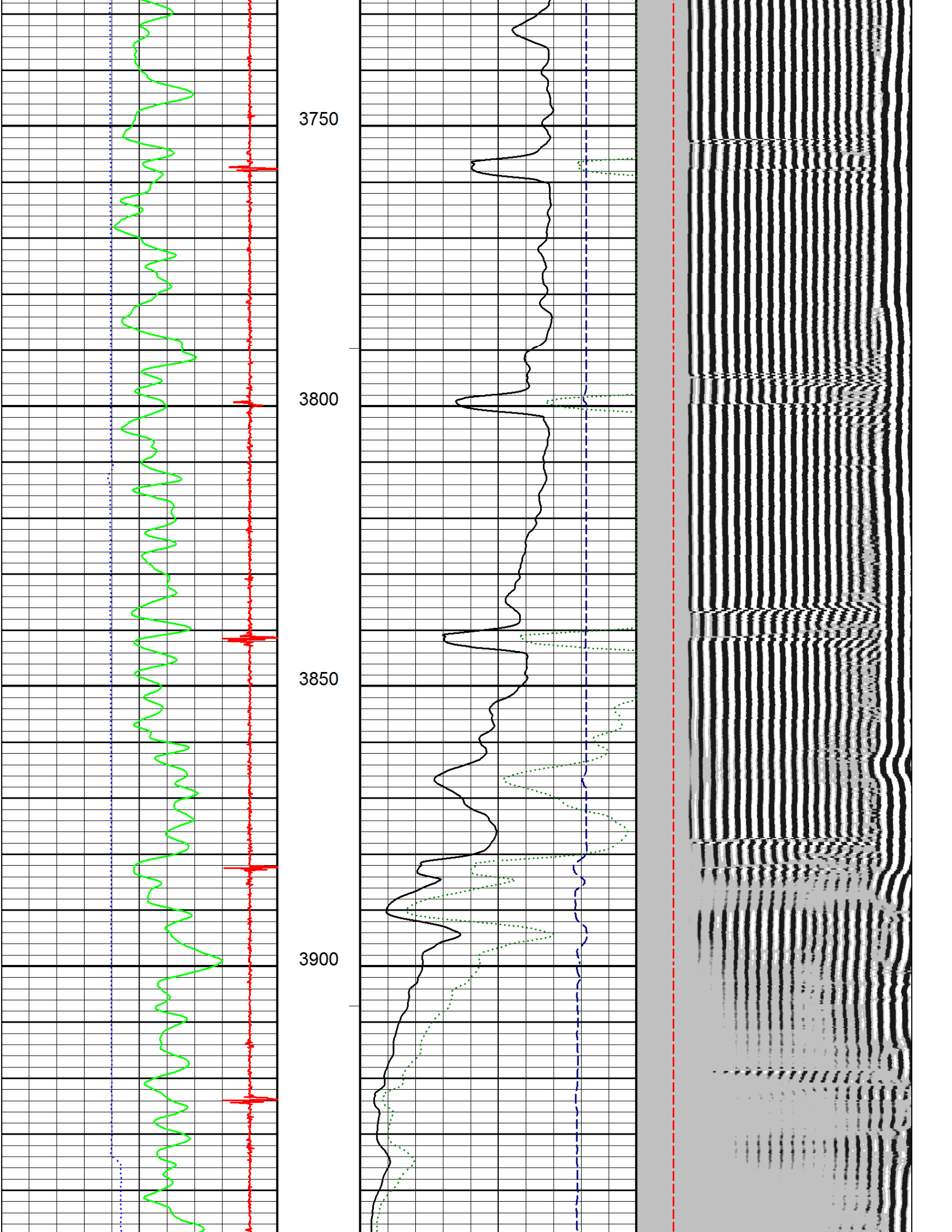


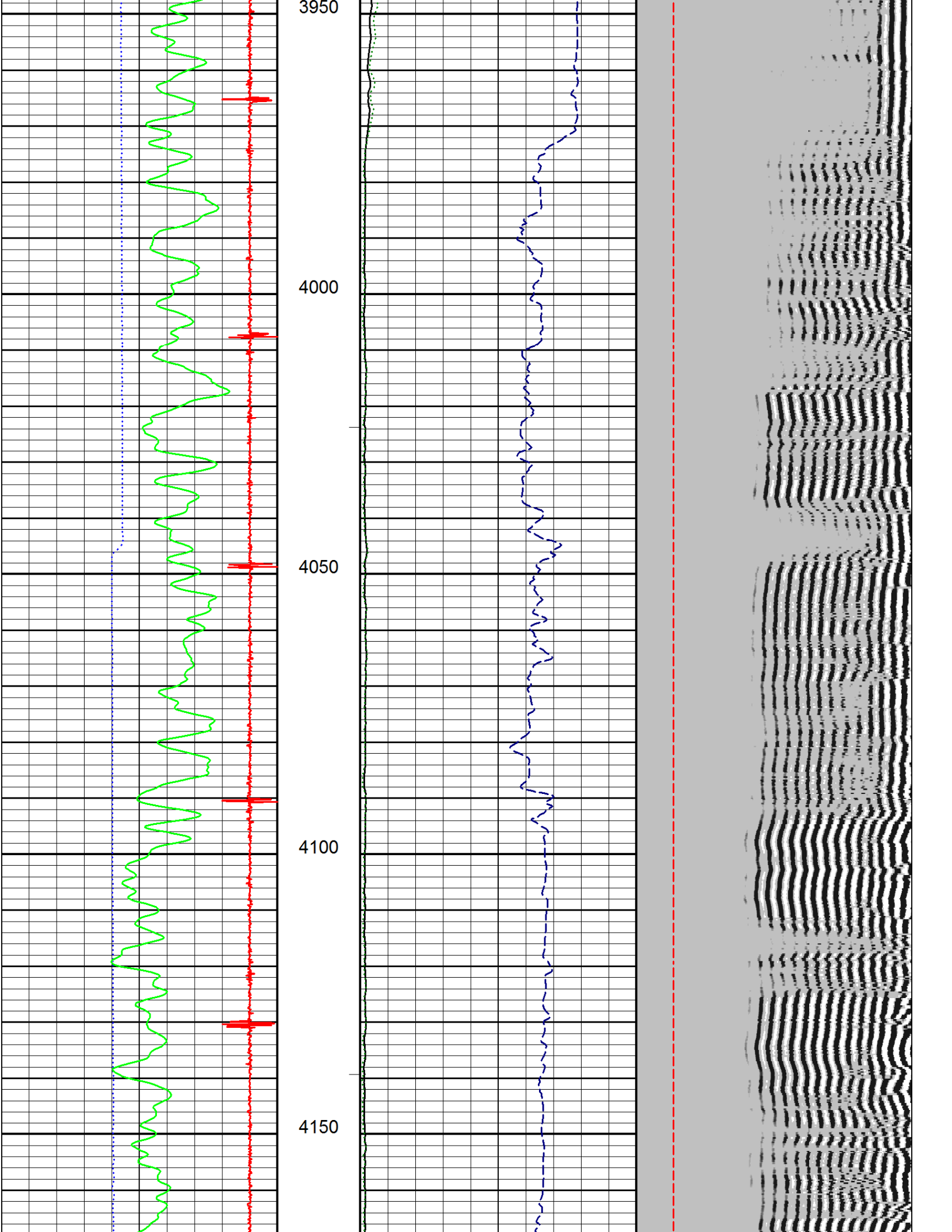


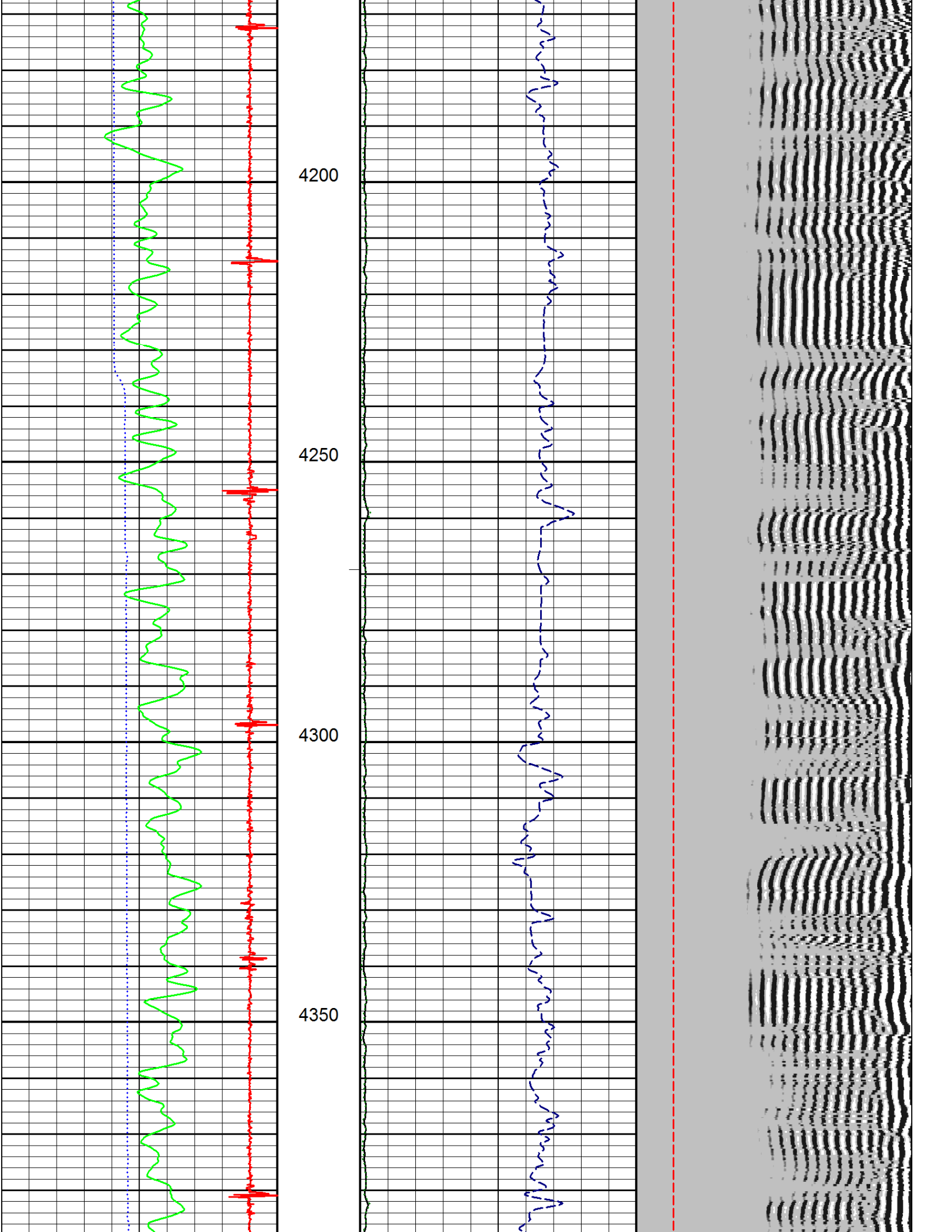


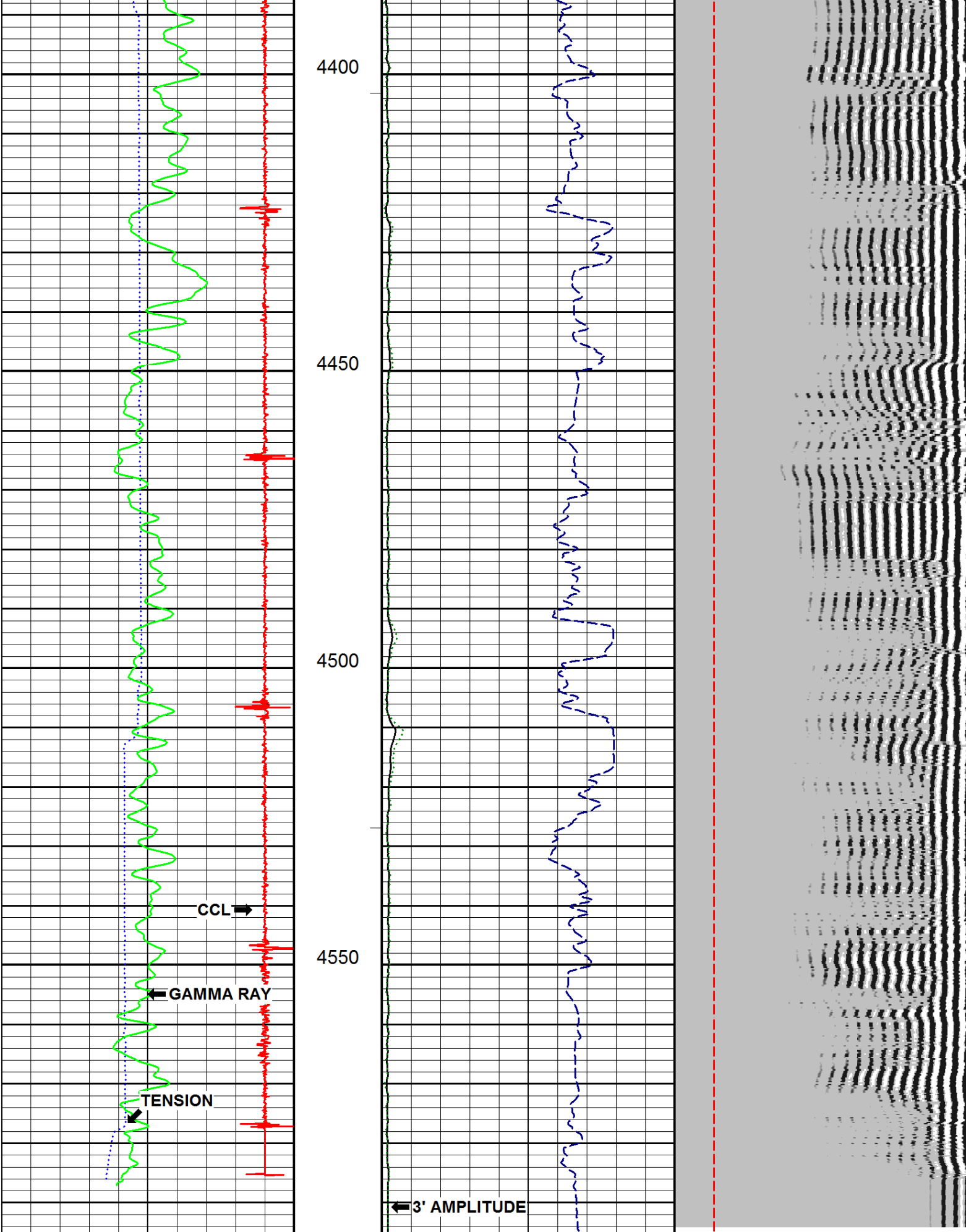












2015-06-24 06:59 Tension (lbF)	4595.61	3' AMPLITUDE (mV)	FREE PIPE TIME (μs)
0.00 2000.00		0.0 100.0	200.0 1200.0
COLLAR LOCATOR		3' AMPLITUDE x5 (mV)	5' VARIABLE DENSITY (μs)
		0.0 20.0	200.0 1200.0

The logo for Ranger Energy Services is a black shield-shaped emblem. Inside the shield, the word "RANGER" is written in large, bold, white, sans-serif capital letters. Below "RANGER", the words "ENERGY SERVICES" are written in a smaller, white, sans-serif font. At the bottom center of the shield is a white five-pointed star.

1/4'S SWNE SEC 28 TWP. 2N RGE. 66W