



December 20, 2018

Ms. Julie Murphy, Director
Colorado Oil and Gas Conservation Commission
1120 Lincoln Street, Suite 801
Denver, CO 80203

RE: COGCC Rule 318A.e.: Proposed Wellbore Spacing Unit

Sanford 30N-30B-M

5N-66W Sec 19: S2S2; Sec 20: S2SW, SWSE; Sec 29: NWNE, N2NW; Sec. 30: N2N2

5N-67W Sec 24: SESE; Sec 25: NENE

640.745

Dear Director Murphy,

SRC Energy Inc. ("SRC Energy") is planning to drill the above referenced well in accordance with the provisions set out in COGCC Rule 318A.e. SRC Energy's proposed wellbore spacing unit consists of:

Sanford 30N-30B-M

5N-66W Sec 19: S2S2; Sec 20: S2SW, SWSE; Sec 29: NWNE, N2NW; Sec. 30: N2N2

5N-67W Sec 24: SESE; Sec 25: NENE

640.745

SRC Energy is not the only owner within the proposed wellbore spacing unit and hereby certifies to the Director that a thirty day (30-day) notice has been given by certified mail to all owners in the proposed wellbore spacing unit, as required by COGCC Rule 318A.e. (5). Copies of the required notification letters are on file at SRC Energy's office. The required thirty (30) day notice period has elapsed absent the receipt by SRC Energy of any objection to their proposal by the owner(s) within the proposed spacing unit for the subject well. We have not received any objections to such well location or proposed spacing unit, therefore, SRC Energy hereby requests the Director approve the well.

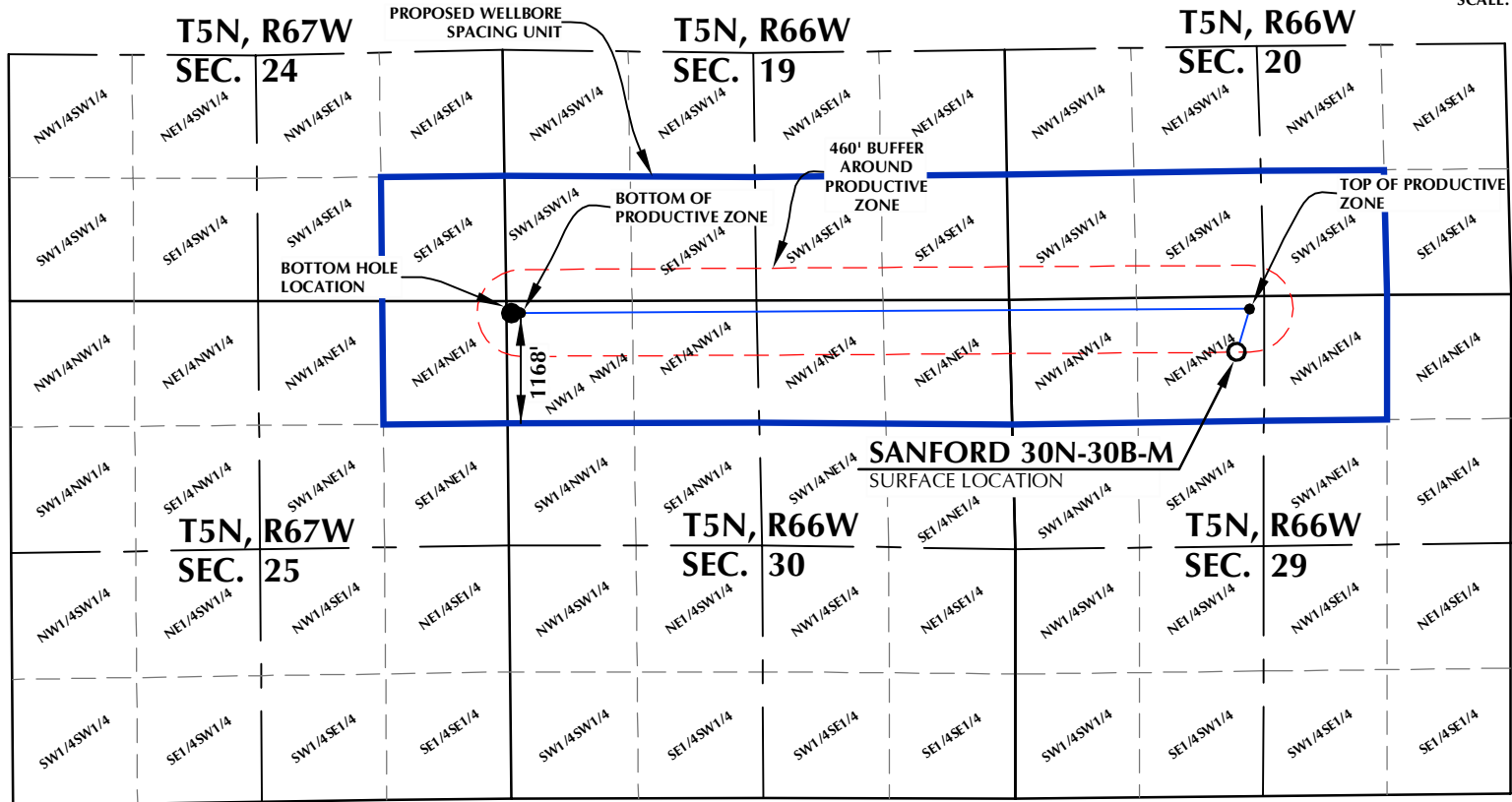
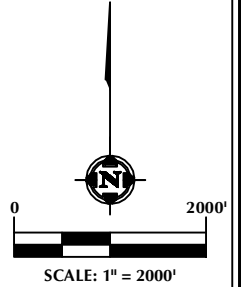
Enclosed is the Proposed Spacing Unit Plat to assist in your review and approval of SRC Energy's proposed Application for Permit to Drill (APD) for Sanford 30N-30B-M well. SRC Energy respectfully requests the COGCC to review the enclosed information and approve the exception location waiver request per Surface Use Agreement and APD for Sanford 30N-30B-M.

Thank you,
Erin Ekblad
Erin Ekblad
Manager of Regulatory Affairs
SRC Energy Inc.

Attachment: Proposed Spacing Unit Plat

DISTANCE FROM COMPLETED
PORTION OF WELLBORE TO
NEAREST UNIT BOUNDARY= 1168'

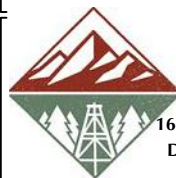
SANFORD 30N-30B-M WELLBORE SPACING UNIT



SURFACE HOLE LOCATION
GROUND ELEVATION= 4903.7'
LATITUDE= 40.376078°
LONGITUDE= -104.804376°
1/4 1/4: NE1/4 NW1/4
TOP OF PRODUCTIVE ZONE
LATITUDE= 40.377388°
LONGITUDE= -104.803868°
1/4 1/4: NE1/4 NW1/4
BOTTOM OF PRODUCTIVE ZONE
LATITUDE= 40.377428°
LONGITUDE= -104.831555°
1/4 1/4: NW1/4 NW1/4
BOTTOM HOLE LOCATION
LATITUDE= 40.377428°
LONGITUDE= -104.831914°
1/4 1/4: NW1/4 NW1/4

WELL PAD - SANFORD 21-29 PAD

SANFORD 30N-30B-M
WELLBORE SPACING UNIT
611' FNL & 2395' FWL NENW (SURFACE HOLE LOCATION)
135' FNL & 2545' FWL NENW (TOP OF PRODUCTIVE ZONE)
LOCATED IN SECTION 29
125' FNL & 150' FWL LOT 2 (NWNW) (BOTTOM OF PRODUCTIVE ZONE)
125' FNL & 50' FWL LOT 2 (NWNW) (BOTTOM HOLE LOCATION)
LOCATED IN SECTION 30
T5N, R66W, 6TH P.M.
WELD COUNTY, COLORADO



SRC ENERGY

1675 Broadway, Suite 2600
Denver, Colorado 80202



CONSULTING, LLC

SHERIDAN OFFICE
1095 Saberton Avenue
Sheridan, Wyoming 82801
Phone 307-674-0609

LOVELAND OFFICE
6706 North Franklin Avenue
Loveland, Colorado 80538
Phone 970-776-4331

| | | | |
|---------------|----------|----------------|---------|
| DRAFTED BY: | LMO | CHECKED BY: | RKF |
| DATE DRAFTED: | 9/14/18 | DATE SURVEYED: | 8/30/18 |
| REVISED: | 10/18/18 | FILE NAME: | 17-232 |

NOTES:

1. DRAWING LATITUDE AND LONGITUDE COORDINATES ARE NAD 83 (2011)(EPOCH:2010).
2. ELEVATION BASED ON NAVD88 (GEOID12B).
3. BASIS OF BEARING DERIVED FROM COLORADO COORDINATE SYSTEM OF 1983 NORTH ZONE.
4. ALL MEASURED DISTANCES ARE GRID. COMBINED SCALE FACTOR: .99972855 CALCULATED FROM THE E. 1/4 CORNER OF SECTION 29, T5N, R66W.