

SRC ENERGY

WELD COUNTY (NAD83, TRUE NORTH)

5N-66W-29 SANFORD 21-29 PAD

SANFORD 30N-30B-M

Wellbore #1

Plan: Design #1

Standard Planning Report

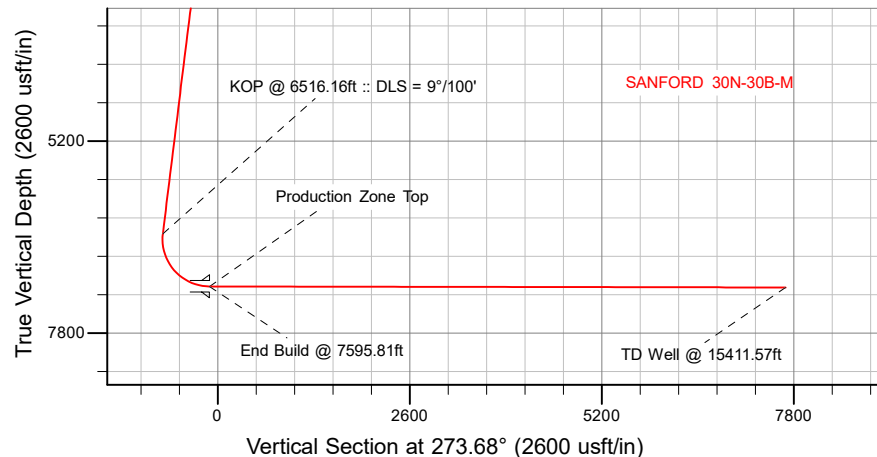
25 October, 2018

Project: WELD COUNTY (NAD83, TRUE NORTH)
Site: 5N-66W-29 SANFORD 21-29 PAD
Well: SANFORD 30N-30B-M
Wellbore: Wellbore #1
Design: Design #1

SRC ENERGY

CASING DETAILS

TVD	MD	Name
1800.00	1814.07	9 5/8"
7168.00	7595.81	Production Zone Top



SECTION DETAILS

Sec	MD	Inc	Azi	TVD	+N/-S	+E/-W	Dleg	TFace	Vsect	Target
1	0.00	0.00	0.00	0.00	0.00	0.00	0.00	0.00	0.00	
2	200.00	0.00	0.00	200.00	0.00	0.00	0.00	0.00	0.00	
3	616.00	8.32	61.10	614.54	14.57	26.40	2.00	61.10	-25.41	
4	6516.16	8.32	61.10	6452.60	427.18	773.83	0.00	0.00	-744.85	
5	7595.81	89.90	270.10	7168.00	478.95	143.56	9.00	-150.75	-112.56	
6	15411.57	89.90	270.10	7182.00	493.00	-7672.17	0.00	0.00	7687.99	SANFORD 30N-30B-M_BHL

WELLBORE TARGET DETAILS (LAT/LONG)

Name	TVD	+N/-S	+E/-W	Latitude	Longitude
SANFORD 30N-30B-M_BPZ	0.00	492.97	-7572.15	40.377428	-104.831555
SANFORD 30N-30B-M_SHL	0.00	0.00	0.00	40.376078	-104.804376
SANFORD 30N-30B-M_BHL	7182.00	493.00	-7672.17	40.377428	-104.831914

SHL
611' FNL
2395' FWL

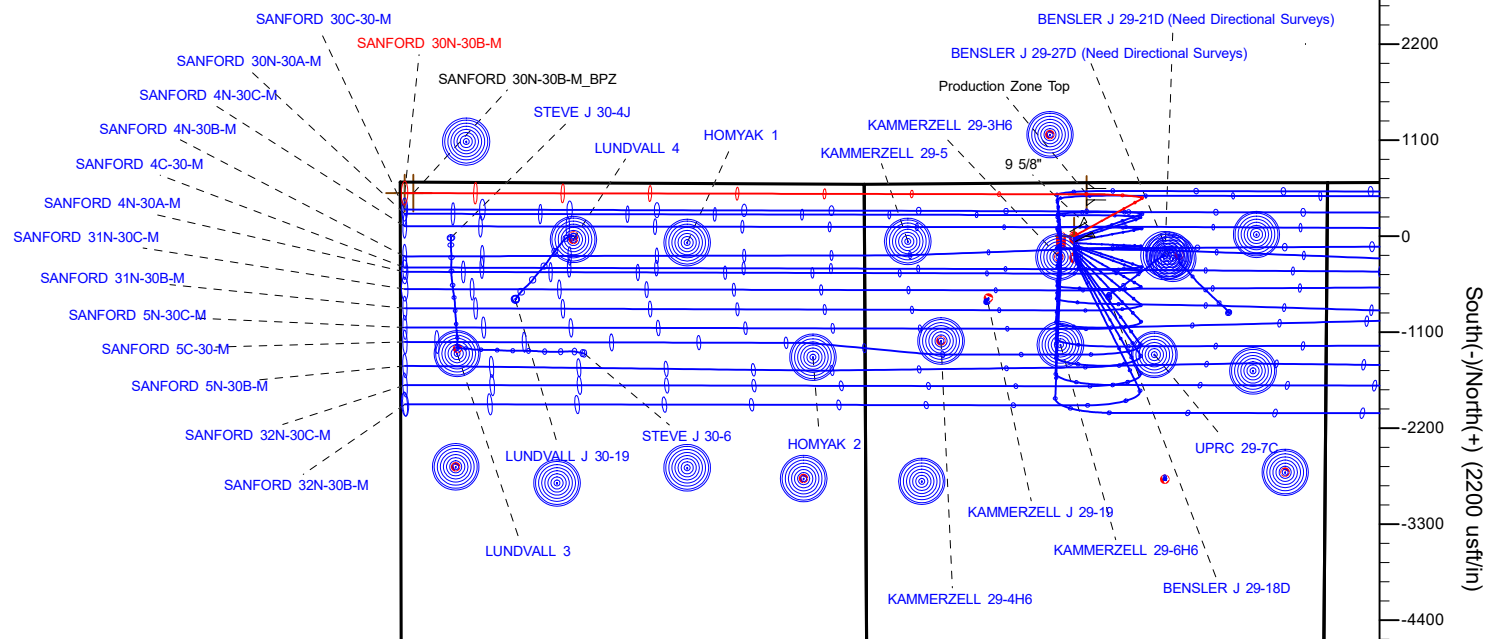
LP
135' FNL
2545' FWL
40.377388° Lat
-104.803868° Long

BPZ
125' FNL
150' FWL

BHL
125' FNL
50' FWL

West(-)/East(+) (2200 usft/in)

-12100 -11000 -9900 -8800 -7700 -6600 -5500 -4400 -3300 -2200 -1100 0 1100 2200 3300



WELL DETAILS: SANFORD 30N-30B-M

GL = 4904'

RKB = 4' @ 4908.00usft (RIG)

Plan: Design #1 (SANFORD 30N-30B-M/Wellbore #1)

Date: 10/25/2015

T Azimuths to True North
M Magnetic North: 8.09°
Magnetic Field
Strength: 52222.1snT
Dip Angle: 66.79°
Date: 10/20/2018
Model: IGRF2015

Hewlett-Packard

Planning Report

Database:	EDM 5000.14 Single User Db	Local Co-ordinate Reference:	Well SANFORD 30N-30B-M
Company:	SRC ENERGY	TVD Reference:	RKB = 4' @ 4908.00usft (RIG)
Project:	WELD COUNTY (NAD83, TRUE NORTH)	MD Reference:	RKB = 4' @ 4908.00usft (RIG)
Site:	5N-66W-29 SANFORD 21-29 PAD	North Reference:	True
Well:	SANFORD 30N-30B-M	Survey Calculation Method:	Minimum Curvature
Wellbore:	Wellbore #1		
Design:	Design #1		

Project	WELD COUNTY (NAD83, TRUE NORTH)		
Map System:	US State Plane 1983	System Datum:	Mean Sea Level
Geo Datum:	North American Datum 1983		
Map Zone:	Colorado Northern Zone		

Site	5N-66W-29 SANFORD 21-29 PAD			
Site Position:		Northing:	1,380,603.61 usft	Latitude: 40.376075
From:	Lat/Long	Easting:	3,193,654.99 usft	Longitude: -104.804914
Position Uncertainty:	0.00 usft	Slot Radius:	13-3/16 "	Grid Convergence: 0.45 °

Well	SANFORD 30N-30B-M			
Well Position	+N/-S	1.09 usft	Northing:	1,380,605.87 usft
	+E/-W	149.89 usft	Easting:	3,193,804.87 usft
Position Uncertainty		3.28 usft	Wellhead Elevation:	Ground Level: 4,904.00 usft

Wellbore	Wellbore #1				
Magnetics	Model Name	Sample Date	Declination (°)	Dip Angle (°)	Field Strength (nT)
	IGRF2015	10/20/2018	8.09	66.79	52,222.07699448

Design	Design #1			
Audit Notes:				
Version:	Phase:	PLAN	Tie On Depth:	0.00
Vertical Section:	Depth From (TVD) (usft)	+N/-S (usft)	+E/-W (usft)	Direction (°)
	0.00	0.00	0.00	273.68

Plan Survey Tool Program	Date	10/25/2018		
Depth From (usft)	Depth To (usft)	Survey (Wellbore)	Tool Name	Remarks
1	0.00	1,800.00	Design #1 (Wellbore #1)	SRC Energy_ISCWSA REV 2
				Fixed:v2:crustal field declinatio
2	1,800.00	15,411.57	Design #1 (Wellbore #1)	SRC Energy_ISCWSA REV 2
				Fixed:v2:Rockies, crustal dec +

Plan Sections										
Measured Depth (usft)	Inclination (°)	Azimuth (°)	Vertical Depth (usft)	+N/-S (usft)	+E/-W (usft)	Dogleg Rate (°/100usft)	Build Rate (°/100usft)	Turn Rate (°/100usft)	TFO (°)	Target
0.00	0.00	0.00	0.00	0.00	0.00	0.00	0.00	0.00	0.00	
200.00	0.00	0.00	200.00	0.00	0.00	0.00	0.00	0.00	0.00	
616.00	8.32	61.10	614.54	14.57	26.40	2.00	2.00	0.00	61.10	
6,516.16	8.32	61.10	6,452.60	427.18	773.83	0.00	0.00	0.00	0.00	
7,595.81	89.90	270.10	7,168.00	478.95	143.56	9.00	7.56	-13.99	-150.75	
15,411.57	89.90	270.10	7,182.00	493.00	-7,672.17	0.00	0.00	0.00	0.00	SANFORD 30N-30B-I

Hewlett-Packard

Planning Report

Database:	EDM 5000.14 Single User Db	Local Co-ordinate Reference:	Well SANFORD 30N-30B-M
Company:	SRC ENERGY	TVD Reference:	RKB = 4' @ 4908.00usft (RIG)
Project:	WELD COUNTY (NAD83, TRUE NORTH)	MD Reference:	RKB = 4' @ 4908.00usft (RIG)
Site:	5N-66W-29 SANFORD 21-29 PAD	North Reference:	True
Well:	SANFORD 30N-30B-M	Survey Calculation Method:	Minimum Curvature
Wellbore:	Wellbore #1		
Design:	Design #1		

Planned Survey									
Measured Depth (usft)	Inclination (°)	Azimuth (°)	Vertical Depth (usft)	+N/-S (usft)	+E/-W (usft)	Vertical Section (usft)	Dogleg Rate (°/100usft)	Build Rate (°/100usft)	Turn Rate (°/100usft)
0.00	0.00	0.00	0.00	0.00	0.00	0.00	0.00	0.00	0.00
100.00	0.00	0.00	100.00	0.00	0.00	0.00	0.00	0.00	0.00
200.00	0.00	0.00	200.00	0.00	0.00	0.00	0.00	0.00	0.00
Begin Nudge @ 200.00ft									
300.00	2.00	61.10	299.98	0.84	1.53	-1.47	2.00	2.00	0.00
400.00	4.00	61.10	399.84	3.37	6.11	-5.88	2.00	2.00	0.00
500.00	6.00	61.10	499.45	7.58	13.74	-13.22	2.00	2.00	0.00
600.00	8.00	61.10	598.70	13.47	24.41	-23.49	2.00	2.00	0.00
616.00	8.32	61.10	614.54	14.57	26.40	-25.41	2.00	2.00	0.00
Hold Tangent @ 616.00ft									
700.00	8.32	61.10	697.66	20.45	37.04	-35.65	0.00	0.00	0.00
800.00	8.32	61.10	796.60	27.44	49.71	-47.84	0.00	0.00	0.00
900.00	8.32	61.10	895.55	34.43	62.37	-60.04	0.00	0.00	0.00
1,000.00	8.32	61.10	994.50	41.43	75.04	-72.23	0.00	0.00	0.00
1,100.00	8.32	61.10	1,093.45	48.42	87.71	-84.42	0.00	0.00	0.00
1,200.00	8.32	61.10	1,192.39	55.41	100.38	-96.62	0.00	0.00	0.00
1,300.00	8.32	61.10	1,291.34	62.40	113.05	-108.81	0.00	0.00	0.00
1,400.00	8.32	61.10	1,390.29	69.40	125.71	-121.01	0.00	0.00	0.00
1,500.00	8.32	61.10	1,489.24	76.39	138.38	-133.20	0.00	0.00	0.00
1,600.00	8.32	61.10	1,588.18	83.38	151.05	-145.39	0.00	0.00	0.00
1,700.00	8.32	61.10	1,687.13	90.38	163.72	-157.59	0.00	0.00	0.00
1,800.00	8.32	61.10	1,786.08	97.37	176.39	-169.78	0.00	0.00	0.00
1,814.07	8.32	61.10	1,800.00	98.35	178.17	-171.50	0.00	0.00	0.00
9 5/8"									
1,900.00	8.32	61.10	1,885.03	104.36	189.05	-181.97	0.00	0.00	0.00
2,000.00	8.32	61.10	1,983.97	111.36	201.72	-194.17	0.00	0.00	0.00
2,100.00	8.32	61.10	2,082.92	118.35	214.39	-206.36	0.00	0.00	0.00
2,200.00	8.32	61.10	2,181.87	125.34	227.06	-218.55	0.00	0.00	0.00
2,300.00	8.32	61.10	2,280.82	132.34	239.73	-230.75	0.00	0.00	0.00
2,400.00	8.32	61.10	2,379.76	139.33	252.40	-242.94	0.00	0.00	0.00
2,500.00	8.32	61.10	2,478.71	146.32	265.06	-255.14	0.00	0.00	0.00
2,600.00	8.32	61.10	2,577.66	153.32	277.73	-267.33	0.00	0.00	0.00
2,700.00	8.32	61.10	2,676.61	160.31	290.40	-279.52	0.00	0.00	0.00
2,800.00	8.32	61.10	2,775.55	167.30	303.07	-291.72	0.00	0.00	0.00
2,900.00	8.32	61.10	2,874.50	174.30	315.74	-303.91	0.00	0.00	0.00
3,000.00	8.32	61.10	2,973.45	181.29	328.40	-316.10	0.00	0.00	0.00
3,100.00	8.32	61.10	3,072.40	188.28	341.07	-328.30	0.00	0.00	0.00
3,200.00	8.32	61.10	3,171.34	195.28	353.74	-340.49	0.00	0.00	0.00
3,300.00	8.32	61.10	3,270.29	202.27	366.41	-352.68	0.00	0.00	0.00
3,400.00	8.32	61.10	3,369.24	209.26	379.08	-364.88	0.00	0.00	0.00
3,500.00	8.32	61.10	3,468.19	216.25	391.74	-377.07	0.00	0.00	0.00
3,600.00	8.32	61.10	3,567.13	223.25	404.41	-389.27	0.00	0.00	0.00
3,700.00	8.32	61.10	3,666.08	230.24	417.08	-401.46	0.00	0.00	0.00
3,800.00	8.32	61.10	3,765.03	237.23	429.75	-413.65	0.00	0.00	0.00
3,900.00	8.32	61.10	3,863.98	244.23	442.42	-425.85	0.00	0.00	0.00
4,000.00	8.32	61.10	3,962.92	251.22	455.08	-438.04	0.00	0.00	0.00
4,100.00	8.32	61.10	4,061.87	258.21	467.75	-450.23	0.00	0.00	0.00
4,200.00	8.32	61.10	4,160.82	265.21	480.42	-462.43	0.00	0.00	0.00
4,300.00	8.32	61.10	4,259.77	272.20	493.09	-474.62	0.00	0.00	0.00
4,400.00	8.32	61.10	4,358.71	279.19	505.76	-486.82	0.00	0.00	0.00
4,500.00	8.32	61.10	4,457.66	286.19	518.43	-499.01	0.00	0.00	0.00
4,600.00	8.32	61.10	4,556.61	293.18	531.09	-511.20	0.00	0.00	0.00
4,700.00	8.32	61.10	4,655.56	300.17	543.76	-523.40	0.00	0.00	0.00

Hewlett-Packard

Planning Report

Database:	EDM 5000.14 Single User Db	Local Co-ordinate Reference:	Well SANFORD 30N-30B-M
Company:	SRC ENERGY	TVD Reference:	RKB = 4' @ 4908.00usft (RIG)
Project:	WELD COUNTY (NAD83, TRUE NORTH)	MD Reference:	RKB = 4' @ 4908.00usft (RIG)
Site:	5N-66W-29 SANFORD 21-29 PAD	North Reference:	True
Well:	SANFORD 30N-30B-M	Survey Calculation Method:	Minimum Curvature
Wellbore:	Wellbore #1		
Design:	Design #1		

Planned Survey									
Measured Depth (usft)	Inclination (°)	Azimuth (°)	Vertical Depth (usft)	+N/-S (usft)	+E/-W (usft)	Vertical Section (usft)	Dogleg Rate (°/100usft)	Build Rate (°/100usft)	Turn Rate (°/100usft)
4,800.00	8.32	61.10	4,754.50	307.17	556.43	-535.59	0.00	0.00	0.00
4,900.00	8.32	61.10	4,853.45	314.16	569.10	-547.78	0.00	0.00	0.00
5,000.00	8.32	61.10	4,952.40	321.15	581.77	-559.98	0.00	0.00	0.00
5,100.00	8.32	61.10	5,051.35	328.15	594.43	-572.17	0.00	0.00	0.00
5,200.00	8.32	61.10	5,150.29	335.14	607.10	-584.36	0.00	0.00	0.00
5,300.00	8.32	61.10	5,249.24	342.13	619.77	-596.56	0.00	0.00	0.00
5,400.00	8.32	61.10	5,348.19	349.12	632.44	-608.75	0.00	0.00	0.00
5,500.00	8.32	61.10	5,447.14	356.12	645.11	-620.95	0.00	0.00	0.00
5,600.00	8.32	61.10	5,546.08	363.11	657.77	-633.14	0.00	0.00	0.00
5,700.00	8.32	61.10	5,645.03	370.10	670.44	-645.33	0.00	0.00	0.00
5,800.00	8.32	61.10	5,743.98	377.10	683.11	-657.53	0.00	0.00	0.00
5,900.00	8.32	61.10	5,842.93	384.09	695.78	-669.72	0.00	0.00	0.00
6,000.00	8.32	61.10	5,941.87	391.08	708.45	-681.91	0.00	0.00	0.00
6,100.00	8.32	61.10	6,040.82	398.08	721.12	-694.11	0.00	0.00	0.00
6,200.00	8.32	61.10	6,139.77	405.07	733.78	-706.30	0.00	0.00	0.00
6,300.00	8.32	61.10	6,238.72	412.06	746.45	-718.49	0.00	0.00	0.00
6,400.00	8.32	61.10	6,337.67	419.06	759.12	-730.69	0.00	0.00	0.00
6,500.00	8.32	61.10	6,436.61	426.05	771.79	-742.88	0.00	0.00	0.00
6,516.16	8.32	61.10	6,452.60	427.18	773.83	-744.85	0.00	0.00	0.00
KOP @ 6516.16ft :: DLS = 9°/100'									
6,600.00	4.06	356.22	6,536.02	433.08	778.96	-749.59	9.00	-5.08	-77.39
6,700.00	10.12	293.51	6,635.32	440.14	770.65	-740.85	9.00	6.05	-62.71
6,800.00	18.70	282.18	6,732.10	447.04	746.88	-716.68	9.00	8.59	-11.33
6,900.00	27.55	277.91	6,823.98	453.62	708.22	-677.68	9.00	8.85	-4.28
7,000.00	36.47	275.60	6,908.69	459.71	655.63	-624.80	9.00	8.92	-2.31
7,100.00	45.42	274.10	6,984.15	465.17	590.39	-559.35	9.00	8.95	-1.50
7,200.00	54.38	273.01	7,048.50	469.86	514.13	-482.94	9.00	8.96	-1.09
7,300.00	63.35	272.13	7,100.16	473.66	428.71	-397.46	9.00	8.97	-0.87
7,400.00	72.32	271.39	7,137.85	476.49	336.24	-305.00	9.00	8.97	-0.74
7,500.00	81.30	270.72	7,160.65	478.27	238.99	-207.84	9.00	8.98	-0.67
7,595.81	89.90	270.10	7,168.00	478.95	143.56	-112.55	9.00	8.98	-0.64
End Build @ 7595.81ft - Production Zone Top									
7,600.00	89.90	270.10	7,168.01	478.95	139.37	-108.37	0.00	0.00	0.00
7,700.00	89.90	270.10	7,168.19	479.13	39.37	-8.57	0.00	0.00	0.00
7,800.00	89.90	270.10	7,168.36	479.31	-60.63	91.24	0.00	0.00	0.00
7,900.00	89.90	270.10	7,168.54	479.49	-160.63	191.04	0.00	0.00	0.00
8,000.00	89.90	270.10	7,168.72	479.67	-260.63	290.85	0.00	0.00	0.00
8,100.00	89.90	270.10	7,168.90	479.85	-360.63	390.65	0.00	0.00	0.00
8,200.00	89.90	270.10	7,169.08	480.03	-460.63	490.46	0.00	0.00	0.00
8,300.00	89.90	270.10	7,169.26	480.21	-560.63	590.26	0.00	0.00	0.00
8,400.00	89.90	270.10	7,169.44	480.39	-660.63	690.07	0.00	0.00	0.00
8,500.00	89.90	270.10	7,169.62	480.57	-760.63	789.88	0.00	0.00	0.00
8,600.00	89.90	270.10	7,169.80	480.75	-860.63	889.68	0.00	0.00	0.00
8,700.00	89.90	270.10	7,169.98	480.93	-960.63	989.49	0.00	0.00	0.00
8,800.00	89.90	270.10	7,170.16	481.11	-1,060.63	1,089.29	0.00	0.00	0.00
8,900.00	89.90	270.10	7,170.34	481.29	-1,160.63	1,189.10	0.00	0.00	0.00
9,000.00	89.90	270.10	7,170.51	481.47	-1,260.63	1,288.90	0.00	0.00	0.00
9,100.00	89.90	270.10	7,170.69	481.65	-1,360.63	1,388.71	0.00	0.00	0.00
9,200.00	89.90	270.10	7,170.87	481.83	-1,460.62	1,488.51	0.00	0.00	0.00
9,300.00	89.90	270.10	7,171.05	482.01	-1,560.62	1,588.32	0.00	0.00	0.00
9,400.00	89.90	270.10	7,171.23	482.19	-1,660.62	1,688.12	0.00	0.00	0.00
9,500.00	89.90	270.10	7,171.41	482.37	-1,760.62	1,787.93	0.00	0.00	0.00
9,600.00	89.90	270.10	7,171.59	482.55	-1,860.62	1,887.74	0.00	0.00	0.00
9,700.00	89.90	270.10	7,171.77	482.73	-1,960.62	1,987.54	0.00	0.00	0.00

Hewlett-Packard

Planning Report

Database:	EDM 5000.14 Single User Db	Local Co-ordinate Reference:	Well SANFORD 30N-30B-M
Company:	SRC ENERGY	TVD Reference:	RKB = 4' @ 4908.00usft (RIG)
Project:	WELD COUNTY (NAD83, TRUE NORTH)	MD Reference:	RKB = 4' @ 4908.00usft (RIG)
Site:	5N-66W-29 SANFORD 21-29 PAD	North Reference:	True
Well:	SANFORD 30N-30B-M	Survey Calculation Method:	Minimum Curvature
Wellbore:	Wellbore #1		
Design:	Design #1		

Planned Survey									
Measured Depth (usft)	Inclination (°)	Azimuth (°)	Vertical Depth (usft)	+N/-S (usft)	+E/-W (usft)	Vertical Section (usft)	Dogleg Rate (°/100usft)	Build Rate (°/100usft)	Turn Rate (°/100usft)
9,800.00	89.90	270.10	7,171.95	482.91	-2,060.62	2,087.35	0.00	0.00	0.00
9,900.00	89.90	270.10	7,172.13	483.09	-2,160.62	2,187.15	0.00	0.00	0.00
10,000.00	89.90	270.10	7,172.31	483.27	-2,260.62	2,286.96	0.00	0.00	0.00
10,100.00	89.90	270.10	7,172.49	483.45	-2,360.62	2,386.76	0.00	0.00	0.00
10,200.00	89.90	270.10	7,172.66	483.63	-2,460.62	2,486.57	0.00	0.00	0.00
10,300.00	89.90	270.10	7,172.84	483.81	-2,560.62	2,586.37	0.00	0.00	0.00
10,400.00	89.90	270.10	7,173.02	483.99	-2,660.62	2,686.18	0.00	0.00	0.00
10,500.00	89.90	270.10	7,173.20	484.17	-2,760.62	2,785.98	0.00	0.00	0.00
10,600.00	89.90	270.10	7,173.38	484.35	-2,860.62	2,885.79	0.00	0.00	0.00
10,700.00	89.90	270.10	7,173.56	484.53	-2,960.62	2,985.60	0.00	0.00	0.00
10,800.00	89.90	270.10	7,173.74	484.71	-3,060.62	3,085.40	0.00	0.00	0.00
10,900.00	89.90	270.10	7,173.92	484.89	-3,160.62	3,185.21	0.00	0.00	0.00
11,000.00	89.90	270.10	7,174.10	485.07	-3,260.62	3,285.01	0.00	0.00	0.00
11,100.00	89.90	270.10	7,174.28	485.25	-3,360.62	3,384.82	0.00	0.00	0.00
11,200.00	89.90	270.10	7,174.46	485.43	-3,460.62	3,484.62	0.00	0.00	0.00
11,300.00	89.90	270.10	7,174.63	485.61	-3,560.62	3,584.43	0.00	0.00	0.00
11,400.00	89.90	270.10	7,174.81	485.79	-3,660.62	3,684.23	0.00	0.00	0.00
11,500.00	89.90	270.10	7,174.99	485.97	-3,760.62	3,784.04	0.00	0.00	0.00
11,600.00	89.90	270.10	7,175.17	486.15	-3,860.62	3,883.84	0.00	0.00	0.00
11,700.00	89.90	270.10	7,175.35	486.33	-3,960.62	3,983.65	0.00	0.00	0.00
11,800.00	89.90	270.10	7,175.53	486.51	-4,060.62	4,083.46	0.00	0.00	0.00
11,900.00	89.90	270.10	7,175.71	486.68	-4,160.62	4,183.26	0.00	0.00	0.00
12,000.00	89.90	270.10	7,175.89	486.86	-4,260.62	4,283.07	0.00	0.00	0.00
12,100.00	89.90	270.10	7,176.07	487.04	-4,360.62	4,382.87	0.00	0.00	0.00
12,200.00	89.90	270.10	7,176.25	487.22	-4,460.62	4,482.68	0.00	0.00	0.00
12,300.00	89.90	270.10	7,176.43	487.40	-4,560.61	4,582.48	0.00	0.00	0.00
12,400.00	89.90	270.10	7,176.61	487.58	-4,660.61	4,682.29	0.00	0.00	0.00
12,500.00	89.90	270.10	7,176.78	487.76	-4,760.61	4,782.09	0.00	0.00	0.00
12,600.00	89.90	270.10	7,176.96	487.94	-4,860.61	4,881.90	0.00	0.00	0.00
12,700.00	89.90	270.10	7,177.14	488.12	-4,960.61	4,981.70	0.00	0.00	0.00
12,800.00	89.90	270.10	7,177.32	488.30	-5,060.61	5,081.51	0.00	0.00	0.00
12,900.00	89.90	270.10	7,177.50	488.48	-5,160.61	5,181.31	0.00	0.00	0.00
13,000.00	89.90	270.10	7,177.68	488.66	-5,260.61	5,281.12	0.00	0.00	0.00
13,100.00	89.90	270.10	7,177.86	488.84	-5,360.61	5,380.93	0.00	0.00	0.00
13,200.00	89.90	270.10	7,178.04	489.02	-5,460.61	5,480.73	0.00	0.00	0.00
13,300.00	89.90	270.10	7,178.22	489.20	-5,560.61	5,580.54	0.00	0.00	0.00
13,400.00	89.90	270.10	7,178.40	489.38	-5,660.61	5,680.34	0.00	0.00	0.00
13,500.00	89.90	270.10	7,178.58	489.56	-5,760.61	5,780.15	0.00	0.00	0.00
13,600.00	89.90	270.10	7,178.75	489.74	-5,860.61	5,879.95	0.00	0.00	0.00
13,700.00	89.90	270.10	7,178.93	489.92	-5,960.61	5,979.76	0.00	0.00	0.00
13,800.00	89.90	270.10	7,179.11	490.10	-6,060.61	6,079.56	0.00	0.00	0.00
13,900.00	89.90	270.10	7,179.29	490.28	-6,160.61	6,179.37	0.00	0.00	0.00
14,000.00	89.90	270.10	7,179.47	490.46	-6,260.61	6,279.17	0.00	0.00	0.00
14,100.00	89.90	270.10	7,179.65	490.64	-6,360.61	6,378.98	0.00	0.00	0.00
14,200.00	89.90	270.10	7,179.83	490.82	-6,460.61	6,478.79	0.00	0.00	0.00
14,300.00	89.90	270.10	7,180.01	491.00	-6,560.61	6,578.59	0.00	0.00	0.00
14,400.00	89.90	270.10	7,180.19	491.18	-6,660.61	6,678.40	0.00	0.00	0.00
14,500.00	89.90	270.10	7,180.37	491.36	-6,760.61	6,778.20	0.00	0.00	0.00
14,600.00	89.90	270.10	7,180.55	491.54	-6,860.61	6,878.01	0.00	0.00	0.00
14,700.00	89.90	270.10	7,180.73	491.72	-6,960.61	6,977.81	0.00	0.00	0.00
14,800.00	89.90	270.10	7,180.90	491.90	-7,060.61	7,077.62	0.00	0.00	0.00
14,900.00	89.90	270.10	7,181.08	492.08	-7,160.61	7,177.42	0.00	0.00	0.00
15,000.00	89.90	270.10	7,181.26	492.26	-7,260.61	7,277.23	0.00	0.00	0.00
15,100.00	89.90	270.10	7,181.44	492.44	-7,360.61	7,377.03	0.00	0.00	0.00

Hewlett-Packard

Planning Report

Database:	EDM 5000.14 Single User Db	Local Co-ordinate Reference:	Well SANFORD 30N-30B-M
Company:	SRC ENERGY	TVD Reference:	RKB = 4' @ 4908.00usft (RIG)
Project:	WELD COUNTY (NAD83, TRUE NORTH)	MD Reference:	RKB = 4' @ 4908.00usft (RIG)
Site:	5N-66W-29 SANFORD 21-29 PAD	North Reference:	True
Well:	SANFORD 30N-30B-M	Survey Calculation Method:	Minimum Curvature
Wellbore:	Wellbore #1		
Design:	Design #1		

Planned Survey										
Measured Depth (usft)	Inclination (°)	Azimuth (°)	Vertical Depth (usft)	+N/-S (usft)	+E/-W (usft)	Vertical Section (usft)	Dogleg Rate (°/100usft)	Build Rate (°/100usft)	Turn Rate (°/100usft)	
15,200.00	89.90	270.10	7,181.62	492.62	-7,460.61	7,476.84	0.00	0.00	0.00	
15,300.00	89.90	270.10	7,181.80	492.80	-7,560.61	7,576.65	0.00	0.00	0.00	
15,400.00	89.90	270.10	7,181.98	492.98	-7,660.60	7,676.45	0.00	0.00	0.00	
15,411.57	89.90	270.10	7,182.00	493.00	-7,672.17	7,688.00	0.00	0.00	0.00	
TD Well @ 15411.57ft										

Casing Points						
Measured Depth (usft)	Vertical Depth (usft)	Name			Casing Diameter (")	Hole Diameter (")
1,814.07	1,800.00	9 5/8"			9-5/8	13-1/2
7,595.81	7,168.00	Production Zone Top			5-1/2	8-1/2

Plan Annotations					
Measured Depth (usft)	Vertical Depth (usft)	Local Coordinates		Comment	
		+N/-S (usft)	+E/-W (usft)		
200.00	200.00	0.00	0.00	Begin Nudge @ 200.00ft	
616.00	614.54	14.57	26.40	Hold Tangent @ 616.00ft	
6,516.16	6,452.60	427.18	773.83	KOP @ 6516.16ft :: DLS = 9°/100'	
7,595.81	7,168.00	478.95	143.56	End Build @ 7595.81ft	
15,411.57	7,182.00	493.00	-7,672.17	TD Well @ 15411.57ft	