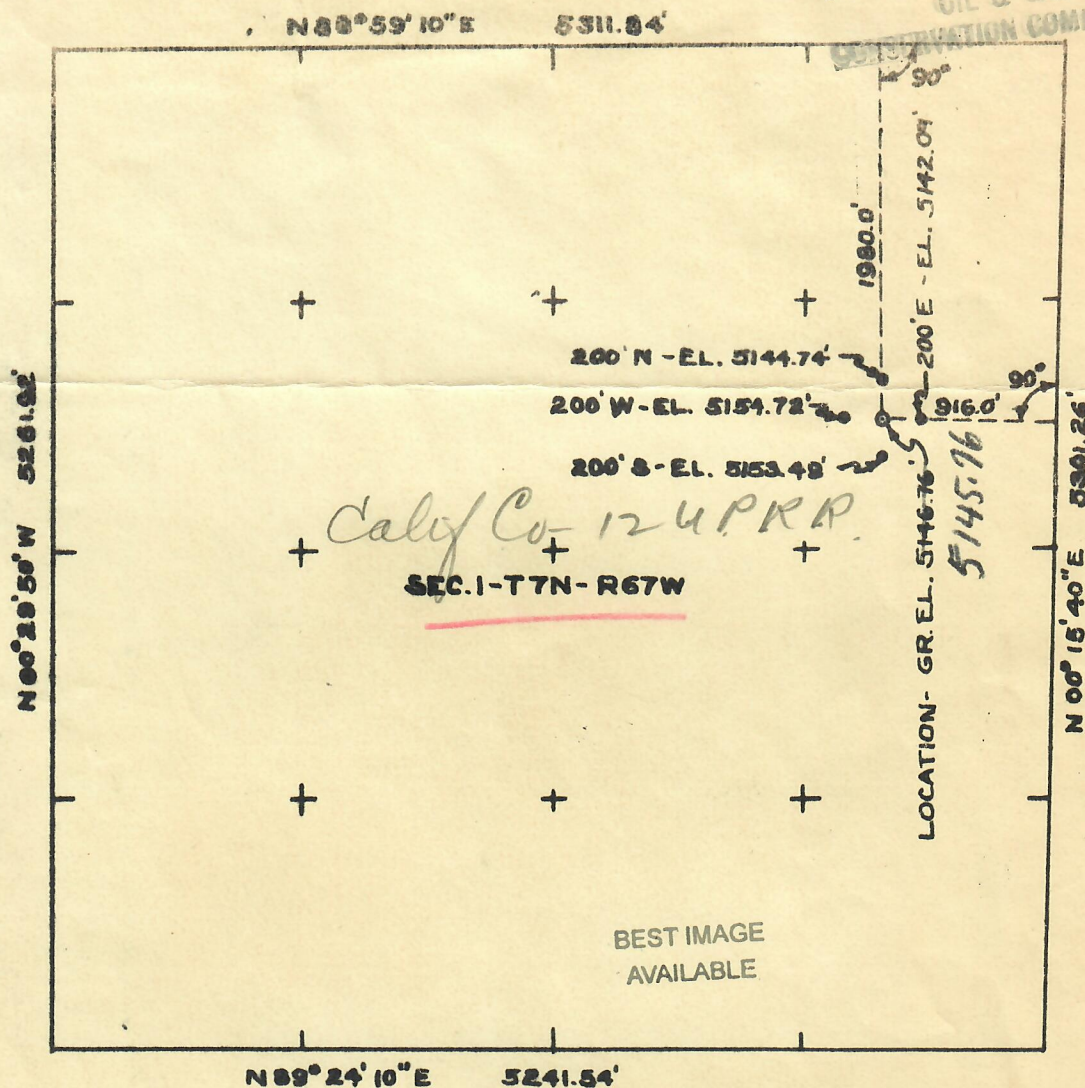




RECEIVED
SEP 1 - 1955

OIL & GAS
CONSERVATION COMMISSION



C.R.W.D. Flor. After loc. east of
S. 14/5-40 B.F. 1111

• REFERENCE SURVEY STAKES
EL. - TOP OF STAKES

SCALE: 1" = 1000'
AUGUST 25, 1955

LOCATION
THE CALIFORNIA CO.
UNION PACIFIC RAILROAD CO. NO. 12
BLACK HOLLOW FIELD
WELD COUNTY, COLO.

Thorwald Harvey Sackett
THORWALD HARVEY SACKETT
REGISTERED LAND SURVEYOR