



December 18, 2018

Ms. Julie Murphy, Director
Colorado Oil & Gas Conservation Commission
1120 Lincoln Street, Ste. 801
Denver, Colorado 80203

RE: Rule 318.A.e.
Coyote Trails 33W-15-1N

Surface Location: SWSE Section 28, Township 1 North, Range 68 West, Weld County, CO

Dear Ms. Murphy,

Extraction Oil and Gas is planning to drill the captioned horizontal well in accordance with the provision of COGCC Rule 318A.e.

The wellbore spacing unit will be 560 acres, comprised of

Township 1 North, Range 68 West, 6th P.M.
Section 28: SWSE, S/2SW/4,
Section 29: S/2S/2,
Section 32: N/2N/2;
Section 33: N/2NW/4, NWNE

This well is planned to drill and test the viability of the Niobrara formation.

Extraction Oil and Gas hereby certifies to the Director that all Owners within the proposed spacing unit above were notified and 30 days have passed without objection.

If you have any questions or issues regarding this matter, please contact Jason Rayburn at (720) 974-7798.

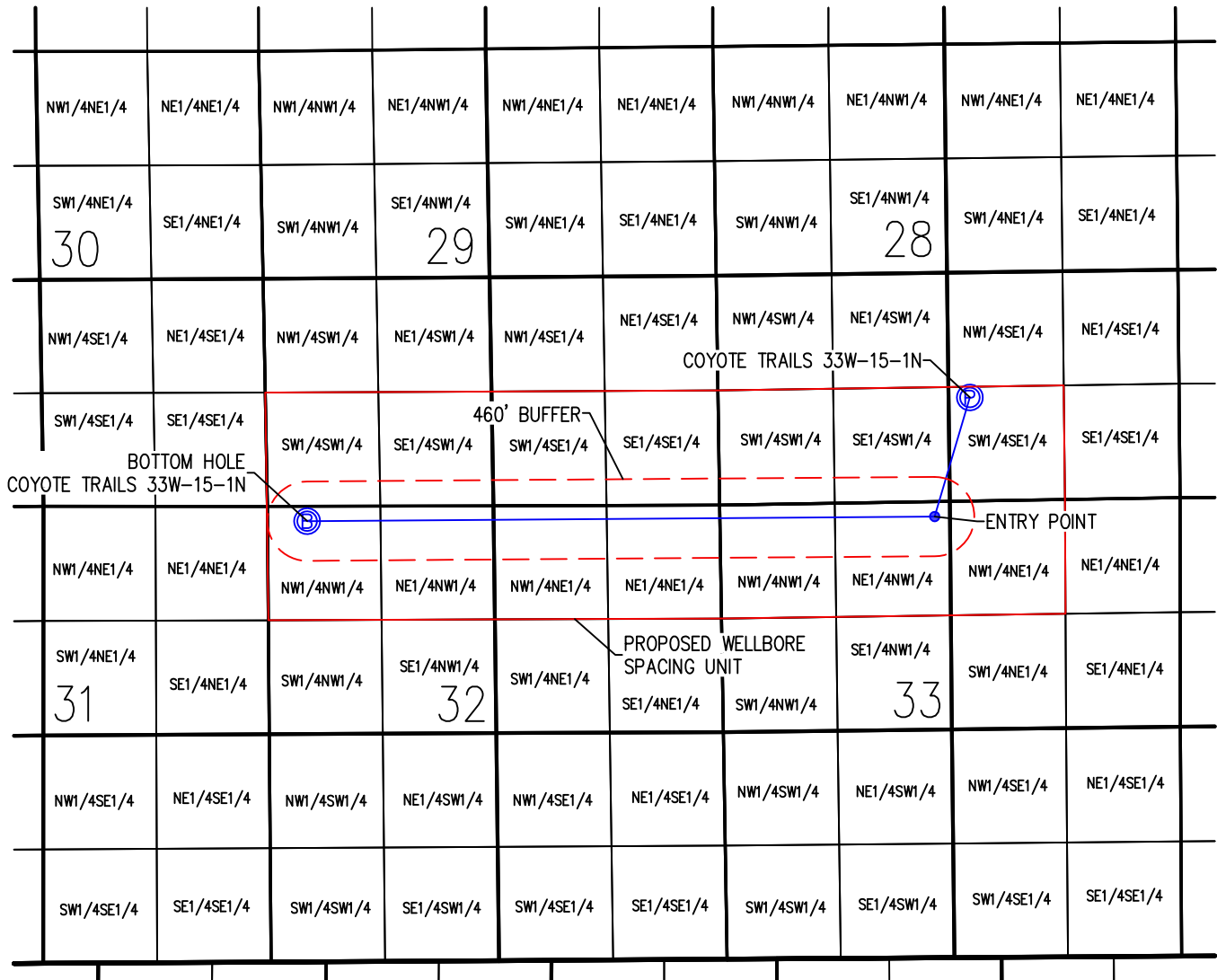
Sincerely,



Extraction Oil & Gas, Inc.

WELL BORE SPACING UNIT COYOTE TRAILS 33W-15-1N

SW1/4 SE1/4 SEC. 28, T1N, R 68 W, 6TH P.M.



COYOTE TRAILS 33W-15-1N

SURFACE LOCATION

SEC. 28, T1N, R68W

GROUND ELEVATION = 5277'

PDOP = 1.3

LATITUDE = 40.018116°

LONGITUDE = -105.007730°

1201' FSL, 2427' FEL

ENTRY POINT LOCATION

SEC. 33, T1N, R68W

LATITUDE = 40.014331°

LONGITUDE = -105.009216°

174' FNL, 2492' FWL

BOTTOM HOLE LOCATION

SEC. 32, T1N, R68W

LATITUDE = 40.014293°

LONGITUDE = -105.035194°

172' FNL, 460' FWL

NOTES:

- 1) THIS SKETCH DOES NOT REPRESENT A BOUNDARY SURVEY.
- 2) THE DATUM FOR THE LATITUDES AND LONGITUDES ON THIS SKETCH IS NAD83.

LEGEND

- ⊙ - PROPOSED WELL HEAD
- ⊙ - PROPOSED BOTTOM HOLE
- - ENTRY POINT



DRAWN BY
BGR

CHECKED BY
AAD

INITIAL SUBMITTAL 11/17/2017
REVISED 5/14/2018
DRAWING SIZE 8.5" X 11"
JOB NO. EXT01N68W28-01
SHEET 1 OF 1



4007 S. LINCOLN AVENUE, SUITE 405 • LOVELAND, COLORADO 80537
P. 970.353.7800 • F. 970.353.7801 • www.baselinecorp.com

