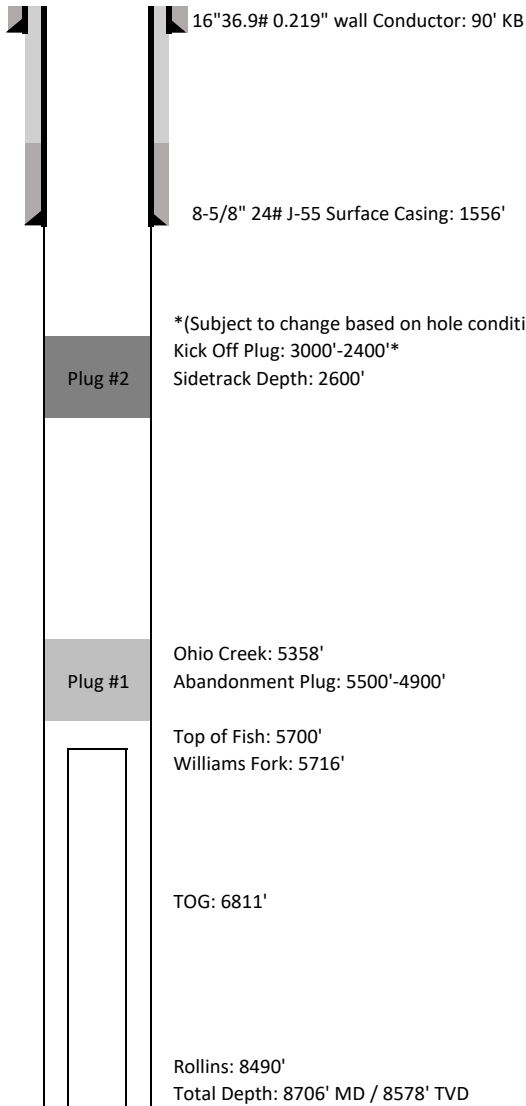


# Laramie Energy LLC

## Proposed Plugging Wellbore Schematic



**Well Name** Sup & Shep 0993-25-16W  
**API No.** 05-077-10579-00  
**Diagram Date** 12/17/2018  
**Legal Location** NENW Sec 25 TWP 9S RNG 93W 6th PM  
**GPS Coordinates** Lat 39.244823  
 Long -107.723350  
**Field** North Vega  
**County** Mesa  
**State** Colorado  
**G.L. Elevation** 8078'  
**K.B. Elevation** 8108'

### Cementing Details

#### **Conductor Pipe**

16" 39.9# 0.219" wall set at 90'  
 6yds of Concrete to surface

#### **Surface Casing**

8-5/8" 24# J-55 set at 1556'  
 Lead: 167sk of 12.3ppg lead  
 VariCem  
 2.45cf/sk  
 Tail: 92sk of 12.5ppg tail  
 VariCem  
 2.18cf/sk  
 23bbbs good cement to surface

#### **Plug #1 - Abandonment Plug**

5500'-4900': 228sx of Neat G 15.8ppg 1.15cf/sk

#### **Plug #1 - Kick Off Plug**

3000'-2400': 264sx of PlugCem 17ppg 0.99cf/sk

*All depths are referenced to KB  
 Not to scale*