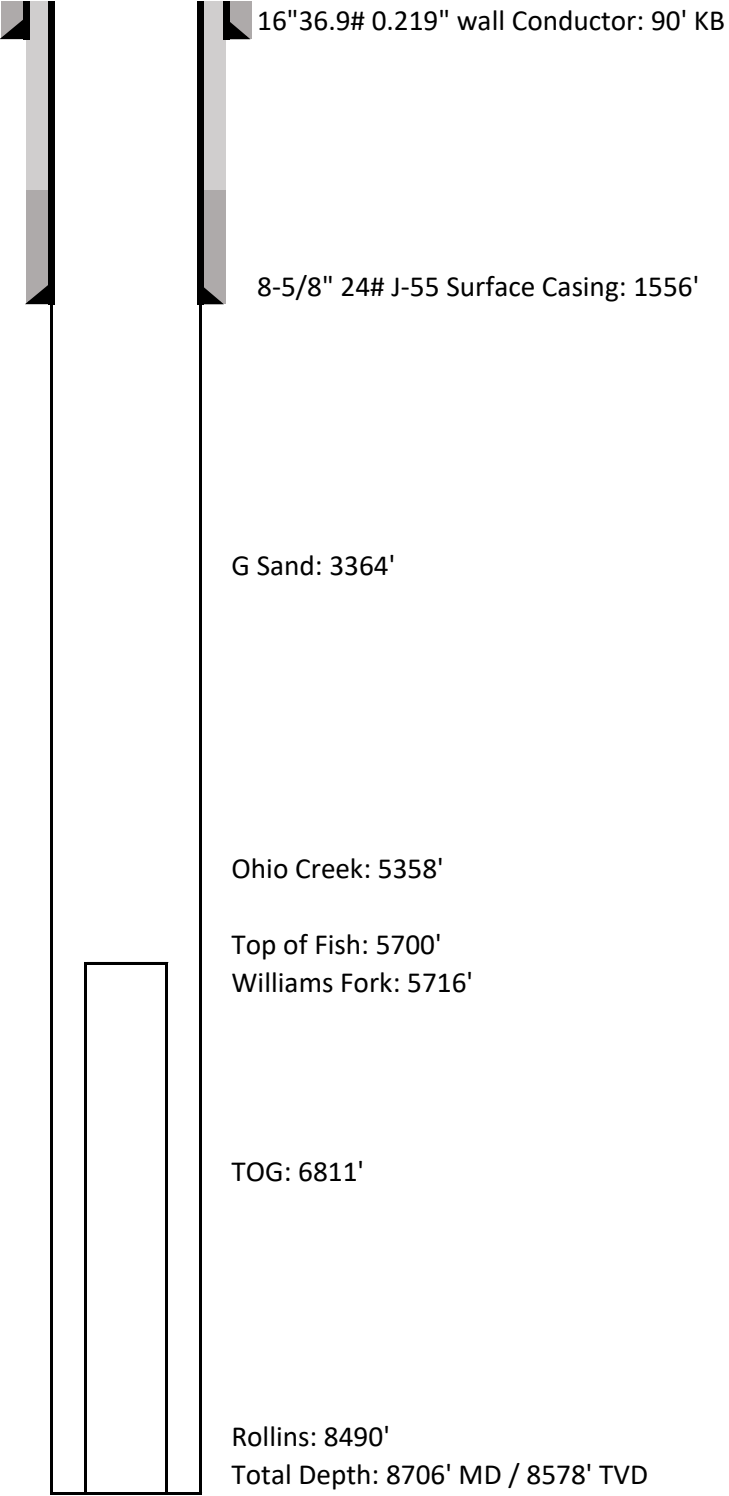


Laramie Energy LLC
Current Wellbore Schematic



Well Name	Sup & Shep 0993-25-16W
API No.	05-077-10579-00
Diagram Date	12/17/2018
Legal Location	NENW Sec 25 TWP 9S RNG 93W 6th PM
GPS Coordinates	Lat 39.244823
	Long -107.723350
Field	North Vega
County	Mesa
State	Colorado
G.L. Elevation	8078'
K.B. Elevation	8108'

Cementing Details

Conductor Pipe	16" 39.9# 0.219" wall set at 90'
	6yds of Concrete to surface

Surface Casing	8-5/8" 24# J-55 set at 1556'
Lead:	167sks of 12.3ppg lead
	VariCem
	2.45cf/sk
Tail:	92sks of 12.5ppg tail
	VariCem
	2.18cf/sk
	23bbbls good cement to surface

Fish	4-1/2" uncemented casing from 5700'-8696'
------	---

All depths are referenced to KB
Not to scale