

Inspection Photos

12/19/2018

Operator: WESCO OPERATING INC - 95520

Location ID: 317056

Inspection Doc. Number: 682504293

Washington County, CO

Aaron Trujillo
NE Reclamation Specialist
COGCC



Photo 1: 2014 Google Earth aerial imagery. Photo shows location (well and battery) and access road prior to plugging and abandonment.

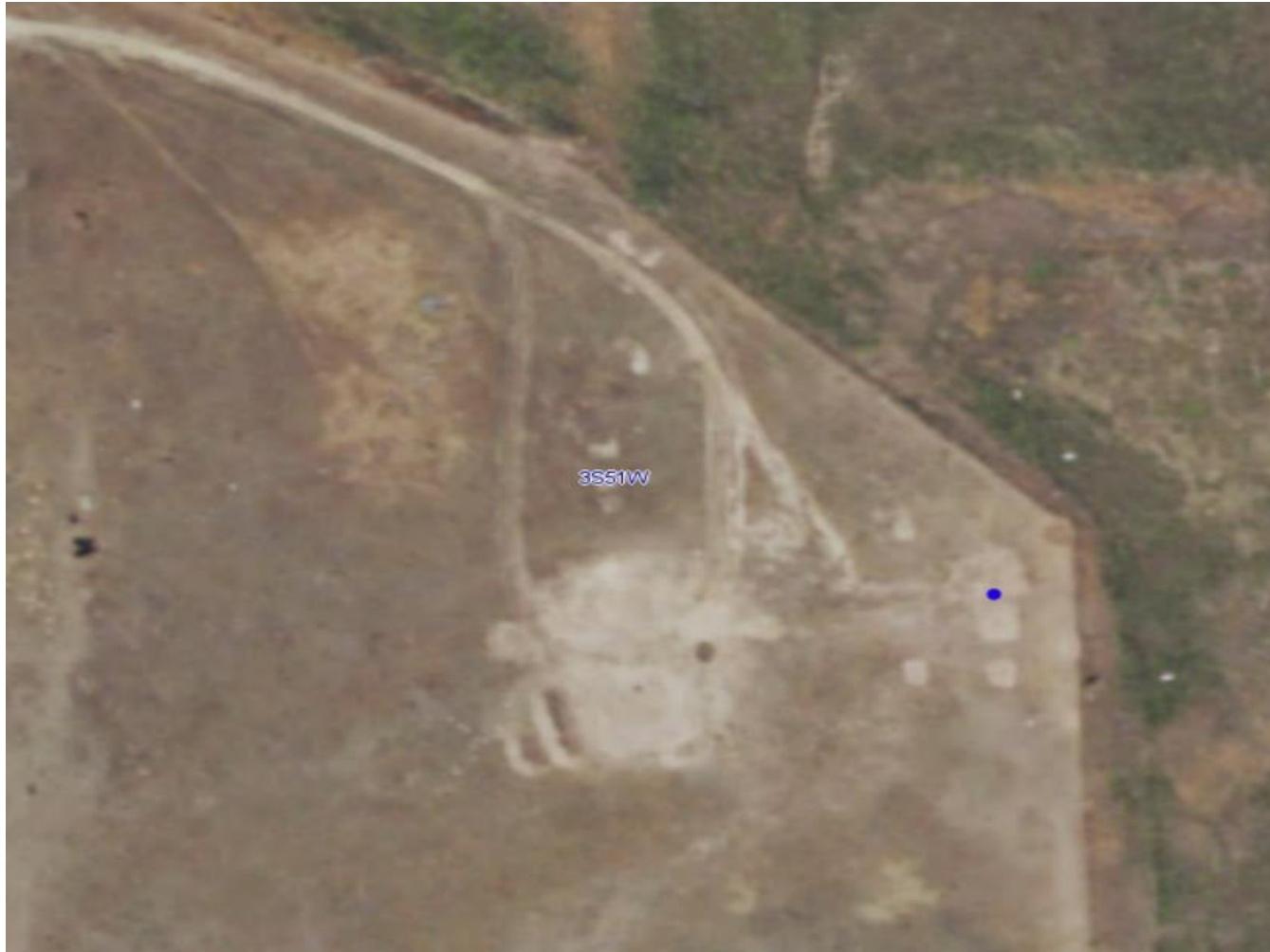


Photo 2: 2017 COGIS aerial imagery. Photo shows location (well and battery) and access road post plugging and abandonment.



Photo 3: Photo taken from the access road, facing northwest. Photo shows access road remains and that compaction alleviation, recontouring, regrading and revegetation activities appear to have been conducted



Photo 4: Photo taken from the access road, facing southwest. Photo shows access road remains and that compaction alleviation, recontouring, regrading and revegetation activities appear to have been conducted



Photo 5: Photo taken from the north end of the location, facing south. Photo shows location remains predominantly bare and exposed soil. Vegetation observed was undesirable weedy plant species such as Kochia and Russian thistle. Very little desirable perennial vegetative germination or establishment observed.

Inspection Photos
Operator: WESCO OPERATING INC - 95520
Location ID: 317056



Photo 6: Photo taken from the north end of the location, facing southwest. See comments under photo 5.



Photo 7: Photo taken from the north end of the location, facing east. See comments under photo 5.



Photo 8: Photo taken from the north end of the location, facing south. See comments under photo 5.



Photo 9: Photo taken from the north end of the location, facing west. See comments under photo 5.



Photo 10: Photo taken from the west end of the location, facing northeast. See comments under photo 5.



Photo 11: Photot taken from the west end of the location. Photo shows vegetation observed was undesirable weedy plant species such as Kochia and Russian thistle. Very little desirable perennial vegetative germination or establishment observed.



Photo 12: Photo taken from the location. Photo shows contaminated soils. Contaminated soils were observed throughout the location.



12.19.2018

Photo 13: Photo taken from the location. Photo shows remnants of a Musk thistle. This is a Colorado State listed noxious weed that was observed throughout the eastern areas of the location.



Photo 14: Photo of the adjacent reference area. Reference vegetation is predominantly Blue grama, Buffalo grass, Sand Dropseed, Western Wheat, etc... Location is not reflective of reference.