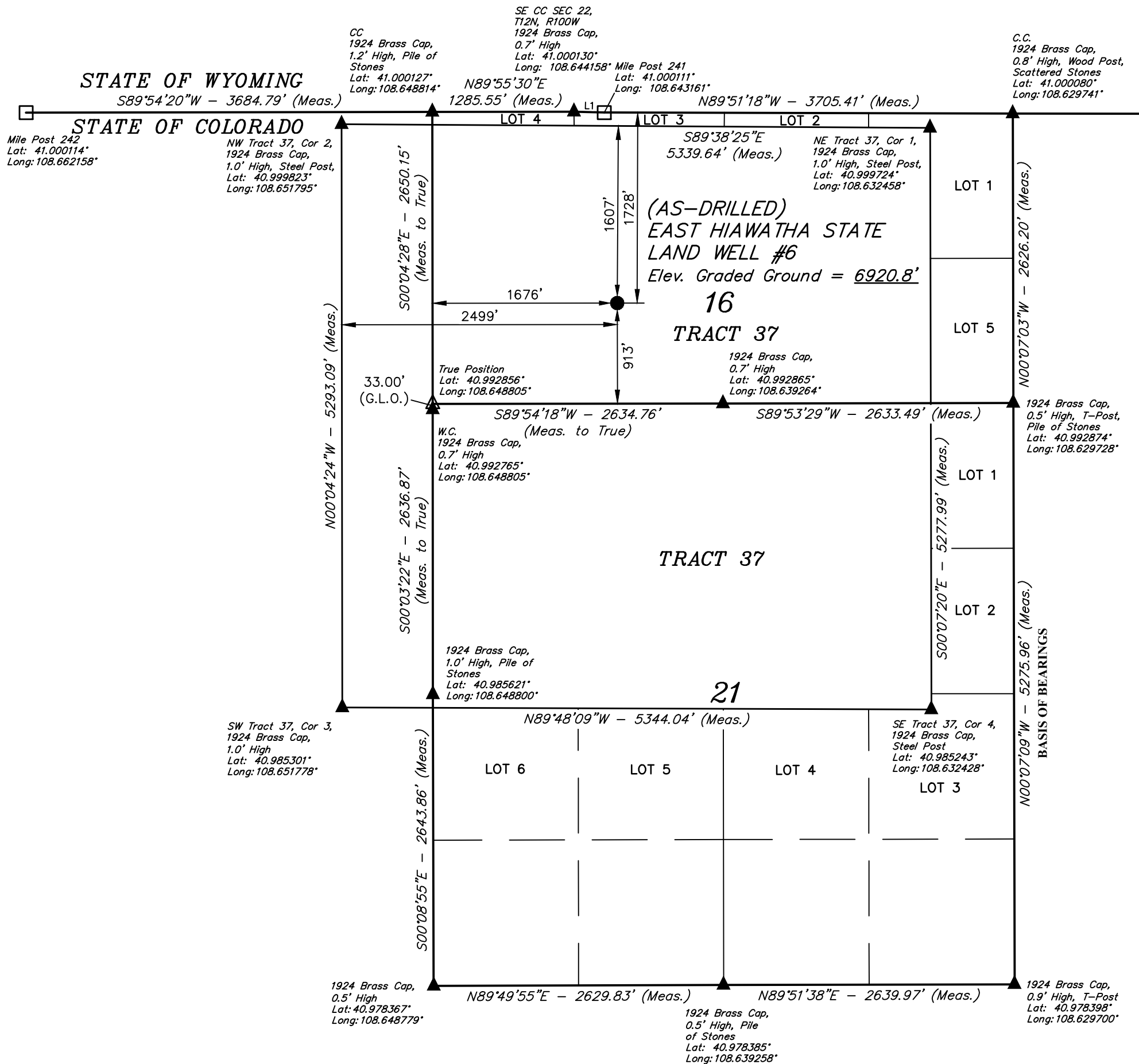


T12N, R100W, 6th P.M.

- = AS-DRILLED WELLHEAD.
 ▲ = SECTION CORNERS
 LOCATED. (NAD 83)
 △ = SECTION CORNERS
 RE-ESTABLISHED.
 (Not Set on Ground.)
 (NAD 83)
 □ = COMPUTED MILE MARKER
 (Not Set on Ground.)
 (NAD 83)

LINE TABLE		
LINE	DIRECTION	LENGTH
L1	S88°33'53"E	275.43'



PDOP = 1.4

NAD 83 (SURFACE LOCATION)
LATITUDE = 40°59'43.32" (40.995368°)
LONGITUDE = 108°38'33.86" (108.642739°)
NAD 27 (SURFACE LOCATION)
LATITUDE = 40°59'43.46" (40.995406°)
LONGITUDE = 108°38'31.47" (108.642075°)
STATE PLANE NAD 83 (CO. NORTH)
N: 1620841.74 E: 2132583.75
STATE PLANE NAD 27 (CO. NORTH)
N: 620838.95 E: 1132744.17

- Distances referenced on plat to section lines are perpendicular.



THIS IS TO CERTIFY THAT THE ABOVE PLAN WAS PREPARED FROM FIELD NOTES OF ACTUAL SURVEYS MADE BY ME OR UNDER MY SUPERVISION AND THAT THE SAME ARE TRUE AND CORRECT TO THE BEST OF MY KNOWLEDGE AND BELIEF.

REGISTERED LAND SURVEYOR
REGISTRATION NO. 38130
STATE OF COLORADO

BASIS OF BEARINGS
BEARINGS ARE A BASED ASSUMPTION THAT THE EAST LINE
OF SECTION 21 BEARS N00°07'09"W. MONUMENTS DESCRIBED HEREON.

HIAWATHA TRIANGULATION STATION (1937) LOCATED IN THE SW 1/4 SW 1/4 OF SECTION 18, T12N, R100W, 6th P.M., TAKEN FROM THE SUGARLOAF BUTTE QUADRANGLE, WYOMING-COLORADO, 7.5 MINUTE QUAD. (TOPOGRAPHIC MAP) PUBLISHED BY THE UNITED STATES DEPARTMENT OF THE INTERIOR, GEOLOGICAL SURVEY. SAID ELEVATION IS MARKED AS BEING 7021 FEET.



UELS, LLC
Corporate Office * 85 South 200 East
Vernal, UT 84078 * (435) 789-1017



**(AS-DRILLED) EAST HIAWATHA STATE LAND WELL #6
TRACT 37, SECTION 16, T12N, R100W, 6th P.M.
MOFFAT COUNTY, COLORADO**

SURVEYED BY	JOHN FLOYD, B.H.	12-12-18	SCALE
DRAWN BY	M.D.	12-14-18	1" = 1000'

AS-DRILLED WELL LOCATION PLAT