



PROJECT DETAILS: Weld County, CO NAD 83

Geodetic System: US State Plane 1983  
Datum: North American Datum 1983  
Ellipsoid: GRS 1980  
Zone: Colorado Northern Zone  
System Datum: Mean Sea Level  
Local North: True

Project: Weld County, CO NAD 83  
Site: Fox Creek 34 NW pad  
Well: Fox Creek 34-0263B  
Wellbore: OH  
Design: Plan 1



Azimuths to True North  
Magnetic North: 8.32°

Magnetic Field  
Strength: 52790.2snT  
Dip Angle: 67.28°  
Date: 9/21/2018  
Model: HDGM



Plan: Plan 1 (Fox Creek 34-0263B/OH)

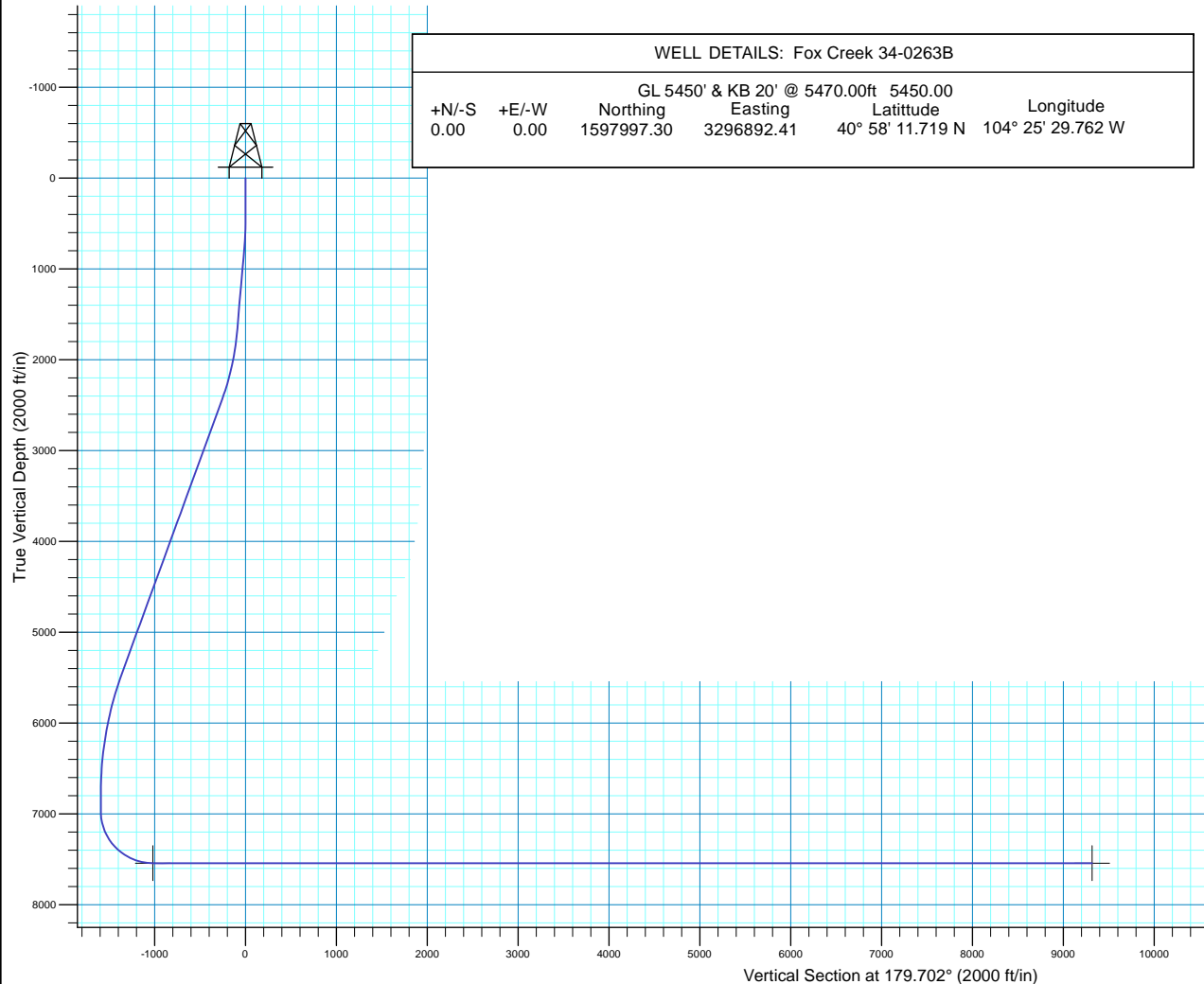
Created By: Seth Burstad

### SECTION DETAILS

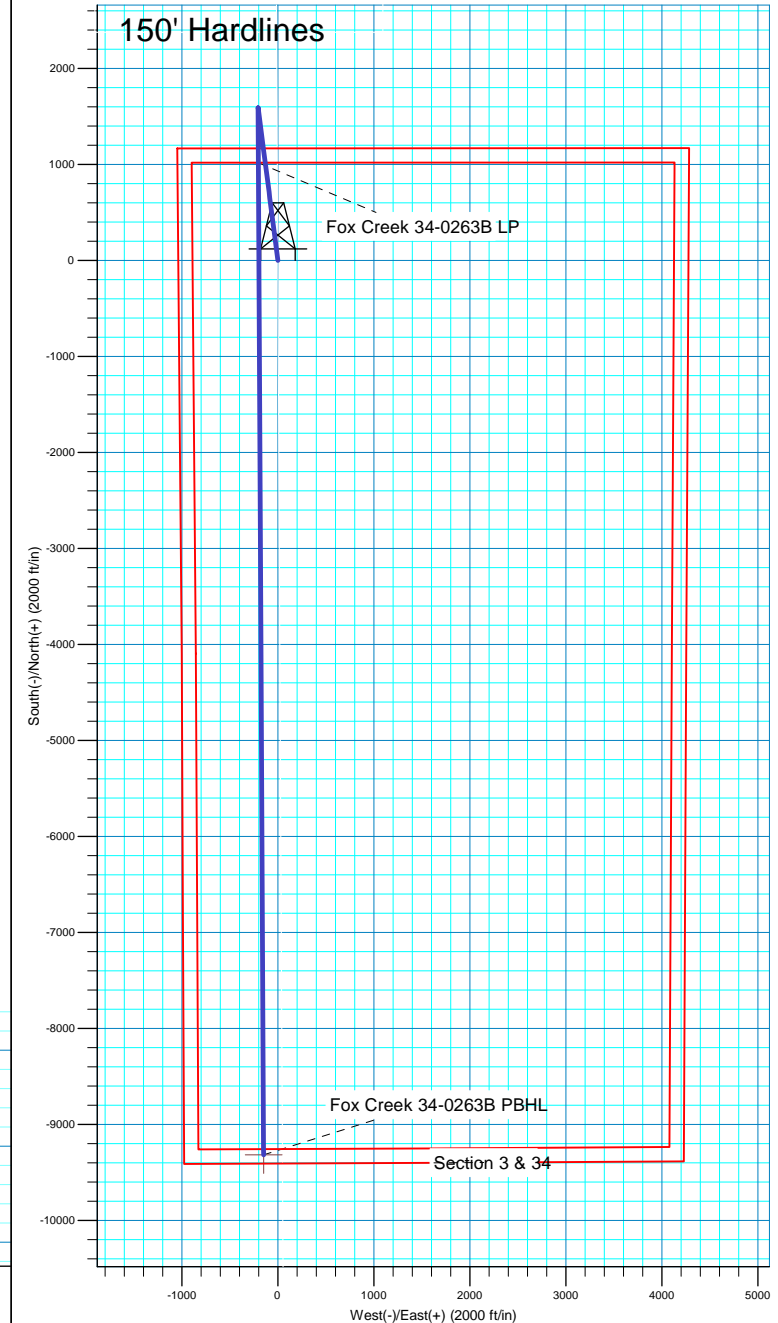
MD	Inc	Azi	TVD	+N/-S	+E/-W	Dleg	TFace	VSect
0.00	0.00	0.000	0.00	0.00	0.00	0.00	0.00	0.00
500.00	0.00	0.000	500.00	0.00	0.00	0.00	0.00	0.00
750.00	5.00	352.642	749.68	10.81	-1.40	2.00	352.64	-10.82
1703.95	5.00	352.642	1700.00	93.27	-12.04	0.00	0.00	-93.33
2465.20	20.23	352.642	2440.70	257.64	-33.27	2.00	0.00	-257.81
5671.74	20.23	352.642	5449.53	1357.04	-175.24	0.00	0.00	-1357.93
7020.08	0.00	0.000	6770.04	1590.62	-205.40	1.50	180.00	-1591.67
7220.08	0.00	0.000	6970.04	1590.62	-205.40	0.00	0.00	-1591.67
8120.08	90.00	179.702	7543.00	1017.67	-202.42	10.00	179.70	-1018.71
18455.63	90.00	179.702	7543.00	-9317.74	-148.64	0.00	0.00	9316.84

### WELL DETAILS: Fox Creek 34-0263B

GL 5450' & KB 20' @ 5470.00ft 5450.00					
+N/-S	+E/-W	Northing	Easting	Latitude	Longitude
0.00	0.00	1597997.30	3296892.41	40° 58' 11.719 N	104° 25' 29.762 W



### 150' Hardlines





# HighPoint Resources

Weld County, CO NAD 83  
Fox Creek 34 NW pad  
Fox Creek 34-0263B

OH

Plan: Plan 1

## Standard Planning Report

21 September, 2018



<b>Database:</b>	Casper District	<b>Local Co-ordinate Reference:</b>	Well Fox Creek 34-0263B
<b>Company:</b>	HighPoint Resources	<b>TVD Reference:</b>	GL 5450' & KB 20' @ 5470.00ft
<b>Project:</b>	Weld County, CO NAD 83	<b>MD Reference:</b>	GL 5450' & KB 20' @ 5470.00ft
<b>Site:</b>	Fox Creek 34 NW pad	<b>North Reference:</b>	True
<b>Well:</b>	Fox Creek 34-0263B	<b>Survey Calculation Method:</b>	Minimum Curvature
<b>Wellbore:</b>	OH		
<b>Design:</b>	Plan 1		

<b>Project</b>	Weld County, CO NAD 83		
<b>Map System:</b>	US State Plane 1983	<b>System Datum:</b>	Mean Sea Level
<b>Geo Datum:</b>	North American Datum 1983		
<b>Map Zone:</b>	Colorado Northern Zone		

Site		Fox Creek 34 NW pad, Site Center : Fox Creek 34-0164B			
Site Position:		Northing:	1,598,010.48 usft	Latitude:	40° 58' 11.852 N
From:	Lat/Long	Easting:	3,296,865.47 usft	Longitude:	104° 25' 30.112 W
Position Uncertainty:	0.00 ft	Slot Radius:	13.200 in	Grid Convergence:	0.69 °

Well	Fox Creek 34-0263B, 1168' FNL 1038' FWL Sec 34 T12N R63W					
Well Position	+N/-S	-13.50 ft	Northing:	1,597,997.30 usft	Latitude:	40° 58' 11.719 N
	+E/-W	26.79 ft	Easting:	3,296,892.42 usft	Longitude:	104° 25' 29.762 W
Position Uncertainty		0.00 ft	Wellhead Elevation:	0.00 ft	Ground Level:	5,450.00 ft

<b>Wellbore</b>	OH				
<b>Magnetics</b>	<b>Model Name</b>	<b>Sample Date</b>	<b>Declination (°)</b>	<b>Dip Angle (°)</b>	<b>Field Strength (nT)</b>
	HDGM	9/21/2018	8.32	67.28	52,790

<b>Design</b>	Plan 1			
<b>Audit Notes:</b>				
<b>Version:</b>	<b>Phase:</b>	PLAN	<b>Tie On Depth:</b>	0.00
<b>Vertical Section:</b>	<b>Depth From (TVD) (ft)</b>	<b>+N/-S (ft)</b>	<b>+E/-W (ft)</b>	<b>Direction (°)</b>
	0.00	0.00	0.00	179.702

<b>Plan Sections</b>										
Measured Depth (ft)	Inclination (°)	Azimuth (°)	Vertical Depth (ft)	+N/-S (ft)	+E/-W (ft)	Dogleg Rate (°/100ft)	Build Rate (°/100ft)	Turn Rate (°/100ft)	TFO (°)	Target
0.00	0.00	0.000	0.00	0.00	0.00	0.00	0.00	0.00	0.00	
500.00	0.00	0.000	500.00	0.00	0.00	0.00	0.00	0.00	0.00	
750.00	5.00	352.642	749.68	10.81	-1.40	2.00	2.00	0.00	352.64	
1,703.95	5.00	352.642	1,700.00	93.27	-12.04	0.00	0.00	0.00	0.00	
2,465.20	20.23	352.642	2,440.70	257.64	-33.27	2.00	2.00	0.00	0.00	
5,671.74	20.23	352.642	5,449.53	1,357.04	-175.24	0.00	0.00	0.00	0.00	
7,020.08	0.00	0.000	6,770.04	1,590.62	-205.40	1.50	-1.50	0.00	180.00	
7,220.08	0.00	0.000	6,970.04	1,590.62	-205.40	0.00	0.00	0.00	0.00	
8,120.08	90.00	179.702	7,543.00	1,017.67	-202.42	10.00	10.00	19.97	179.70	
18,455.63	90.00	179.702	7,543.00	-9,317.75	-148.64	0.00	0.00	0.00	0.00	Fox Creek 34-0263B

<b>Database:</b>	Casper District	<b>Local Co-ordinate Reference:</b>	Well Fox Creek 34-0263B
<b>Company:</b>	HighPoint Resources	<b>TVD Reference:</b>	GL 5450' & KB 20' @ 5470.00ft
<b>Project:</b>	Weld County, CO NAD 83	<b>MD Reference:</b>	GL 5450' & KB 20' @ 5470.00ft
<b>Site:</b>	Fox Creek 34 NW pad	<b>North Reference:</b>	True
<b>Well:</b>	Fox Creek 34-0263B	<b>Survey Calculation Method:</b>	Minimum Curvature
<b>Wellbore:</b>	OH		
<b>Design:</b>	Plan 1		

Planned Survey									
Measured Depth (ft)	Inclination (°)	Azimuth (°)	Vertical Depth (ft)	+N/-S (ft)	+E/-W (ft)	Vertical Section (ft)	Dogleg Rate (°/100ft)	Build Rate (°/100ft)	Turn Rate (°/100ft)
0.00	0.00	0.000	0.00	0.00	0.00	0.00	0.00	0.00	0.00
100.00	0.00	0.000	100.00	0.00	0.00	0.00	0.00	0.00	0.00
200.00	0.00	0.000	200.00	0.00	0.00	0.00	0.00	0.00	0.00
300.00	0.00	0.000	300.00	0.00	0.00	0.00	0.00	0.00	0.00
400.00	0.00	0.000	400.00	0.00	0.00	0.00	0.00	0.00	0.00
500.00	0.00	0.000	500.00	0.00	0.00	0.00	0.00	0.00	0.00
Start Build 2.00									
600.00	2.00	352.642	599.98	1.73	-0.22	-1.73	2.00	2.00	0.00
700.00	4.00	352.642	699.84	6.92	-0.89	-6.93	2.00	2.00	0.00
750.00	5.00	352.642	749.68	10.81	-1.40	-10.82	2.00	2.00	0.00
Start 953.95 hold at 750.00 MD									
800.00	5.00	352.642	799.49	15.13	-1.95	-15.14	0.00	0.00	0.00
900.00	5.00	352.642	899.11	23.78	-3.07	-23.79	0.00	0.00	0.00
1,000.00	5.00	352.642	998.73	32.42	-4.19	-32.44	0.00	0.00	0.00
1,100.00	5.00	352.642	1,098.35	41.06	-5.30	-41.09	0.00	0.00	0.00
1,200.00	5.00	352.642	1,197.97	49.71	-6.42	-49.74	0.00	0.00	0.00
1,300.00	5.00	352.642	1,297.59	58.35	-7.54	-58.39	0.00	0.00	0.00
1,400.00	5.00	352.642	1,397.21	67.00	-8.65	-67.04	0.00	0.00	0.00
1,500.00	5.00	352.642	1,496.83	75.64	-9.77	-75.69	0.00	0.00	0.00
1,600.00	5.00	352.642	1,596.45	84.28	-10.88	-84.34	0.00	0.00	0.00
1,700.00	5.00	352.642	1,696.07	92.93	-12.00	-92.99	0.00	0.00	0.00
1,703.95	5.00	352.642	1,700.00	93.27	-12.04	-93.33	0.00	0.00	0.00
Start DLS 2.00 TFO 0.00									
1,800.00	6.92	352.642	1,795.53	103.16	-13.32	-103.23	2.00	2.00	0.00
1,900.00	8.92	352.642	1,894.57	116.83	-15.09	-116.90	2.00	2.00	0.00
2,000.00	10.92	352.642	1,993.07	133.91	-17.29	-134.00	2.00	2.00	0.00
2,100.00	12.92	352.642	2,090.91	154.40	-19.94	-154.50	2.00	2.00	0.00
2,200.00	14.92	352.642	2,187.97	178.26	-23.02	-178.38	2.00	2.00	0.00
2,300.00	16.92	352.642	2,284.12	205.46	-26.53	-205.60	2.00	2.00	0.00
2,400.00	18.92	352.642	2,379.27	235.98	-30.47	-236.13	2.00	2.00	0.00
2,465.20	20.23	352.642	2,440.70	257.64	-33.27	-257.81	2.00	2.00	0.00
Start 3206.54 hold at 2465.20 MD									
2,500.00	20.23	352.642	2,473.35	269.57	-34.81	-269.75	0.00	0.00	0.00
2,600.00	20.23	352.642	2,567.19	303.86	-39.24	-304.06	0.00	0.00	0.00
2,700.00	20.23	352.642	2,661.02	338.14	-43.67	-338.37	0.00	0.00	0.00
2,800.00	20.23	352.642	2,754.86	372.43	-48.09	-372.68	0.00	0.00	0.00
2,900.00	20.23	352.642	2,848.69	406.72	-52.52	-406.98	0.00	0.00	0.00
3,000.00	20.23	352.642	2,942.52	441.00	-56.95	-441.29	0.00	0.00	0.00
3,100.00	20.23	352.642	3,036.36	475.29	-61.38	-475.60	0.00	0.00	0.00
3,200.00	20.23	352.642	3,130.19	509.58	-65.80	-509.91	0.00	0.00	0.00
3,300.00	20.23	352.642	3,224.03	543.86	-70.23	-544.22	0.00	0.00	0.00
3,400.00	20.23	352.642	3,317.86	578.15	-74.66	-578.53	0.00	0.00	0.00
3,500.00	20.23	352.642	3,411.70	612.43	-79.08	-612.84	0.00	0.00	0.00
3,600.00	20.23	352.642	3,505.53	646.72	-83.51	-647.15	0.00	0.00	0.00
3,700.00	20.23	352.642	3,599.36	681.01	-87.94	-681.45	0.00	0.00	0.00
3,800.00	20.23	352.642	3,693.20	715.29	-92.37	-715.76	0.00	0.00	0.00
3,900.00	20.23	352.642	3,787.03	749.58	-96.79	-750.07	0.00	0.00	0.00
4,000.00	20.23	352.642	3,880.87	783.87	-101.22	-784.38	0.00	0.00	0.00
4,100.00	20.23	352.642	3,974.70	818.15	-105.65	-818.69	0.00	0.00	0.00
4,200.00	20.23	352.642	4,068.53	852.44	-110.08	-853.00	0.00	0.00	0.00
4,300.00	20.23	352.642	4,162.37	886.72	-114.50	-887.31	0.00	0.00	0.00
4,400.00	20.23	352.642	4,256.20	921.01	-118.93	-921.62	0.00	0.00	0.00
4,500.00	20.23	352.642	4,350.04	955.30	-123.36	-955.93	0.00	0.00	0.00
4,600.00	20.23	352.642	4,443.87	989.58	-127.79	-990.23	0.00	0.00	0.00

<b>Database:</b>	Casper District	<b>Local Co-ordinate Reference:</b>	Well Fox Creek 34-0263B
<b>Company:</b>	HighPoint Resources	<b>TVD Reference:</b>	GL 5450' & KB 20' @ 5470.00ft
<b>Project:</b>	Weld County, CO NAD 83	<b>MD Reference:</b>	GL 5450' & KB 20' @ 5470.00ft
<b>Site:</b>	Fox Creek 34 NW pad	<b>North Reference:</b>	True
<b>Well:</b>	Fox Creek 34-0263B	<b>Survey Calculation Method:</b>	Minimum Curvature
<b>Wellbore:</b>	OH		
<b>Design:</b>	Plan 1		

Planned Survey									
Measured Depth (ft)	Inclination (°)	Azimuth (°)	Vertical Depth (ft)	+N/-S (ft)	+E/-W (ft)	Vertical Section (ft)	Dogleg Rate (°/100ft)	Build Rate (°/100ft)	Turn Rate (°/100ft)
4,700.00	20.23	352.642	4,537.71	1,023.87	-132.21	-1,024.54	0.00	0.00	0.00
4,800.00	20.23	352.642	4,631.54	1,058.16	-136.64	-1,058.85	0.00	0.00	0.00
4,900.00	20.23	352.642	4,725.37	1,092.44	-141.07	-1,093.16	0.00	0.00	0.00
5,000.00	20.23	352.642	4,819.21	1,126.73	-145.50	-1,127.47	0.00	0.00	0.00
5,100.00	20.23	352.642	4,913.04	1,161.01	-149.92	-1,161.78	0.00	0.00	0.00
5,200.00	20.23	352.642	5,006.88	1,195.30	-154.35	-1,196.09	0.00	0.00	0.00
5,300.00	20.23	352.642	5,100.71	1,229.59	-158.78	-1,230.40	0.00	0.00	0.00
5,400.00	20.23	352.642	5,194.54	1,263.87	-163.21	-1,264.70	0.00	0.00	0.00
5,500.00	20.23	352.642	5,288.38	1,298.16	-167.63	-1,299.01	0.00	0.00	0.00
5,600.00	20.23	352.642	5,382.21	1,332.45	-172.06	-1,333.32	0.00	0.00	0.00
5,671.74	20.23	352.642	5,449.53	1,357.04	-175.24	-1,357.93	0.00	0.00	0.00
Start Drop -1.50									
5,700.00	19.80	352.642	5,476.08	1,366.63	-176.48	-1,367.53	1.50	-1.50	0.00
5,800.00	18.30	352.642	5,570.60	1,399.01	-180.66	-1,399.93	1.50	-1.50	0.00
5,900.00	16.80	352.642	5,665.94	1,428.91	-184.52	-1,429.85	1.50	-1.50	0.00
6,000.00	15.30	352.642	5,762.04	1,456.33	-188.06	-1,457.29	1.50	-1.50	0.00
6,100.00	13.80	352.642	5,858.83	1,481.25	-191.28	-1,482.23	1.50	-1.50	0.00
6,200.00	12.30	352.642	5,956.25	1,503.65	-194.17	-1,504.64	1.50	-1.50	0.00
6,300.00	10.80	352.642	6,054.22	1,523.50	-196.73	-1,524.51	1.50	-1.50	0.00
6,400.00	9.30	352.642	6,152.68	1,540.81	-198.97	-1,541.83	1.50	-1.50	0.00
6,500.00	7.80	352.642	6,251.57	1,555.56	-200.87	-1,556.58	1.50	-1.50	0.00
6,600.00	6.30	352.642	6,350.81	1,567.73	-202.44	-1,568.77	1.50	-1.50	0.00
6,700.00	4.80	352.642	6,450.34	1,577.33	-203.68	-1,578.37	1.50	-1.50	0.00
6,800.00	3.30	352.642	6,550.08	1,584.33	-204.59	-1,585.38	1.50	-1.50	0.00
6,900.00	1.80	352.642	6,649.98	1,588.75	-205.16	-1,589.79	1.50	-1.50	0.00
7,000.00	0.30	352.642	6,749.96	1,590.57	-205.39	-1,591.61	1.50	-1.50	0.00
7,020.08	0.00	0.000	6,770.04	1,590.62	-205.40	-1,591.67	1.50	-1.50	0.00
Start 200.00 hold at 7020.08 MD									
7,100.00	0.00	0.000	6,849.96	1,590.62	-205.40	-1,591.67	0.00	0.00	0.00
7,200.00	0.00	0.000	6,949.96	1,590.62	-205.40	-1,591.67	0.00	0.00	0.00
7,220.08	0.00	0.000	6,970.04	1,590.62	-205.40	-1,591.67	0.00	0.00	0.00
Start DLS 10.00 TFO 179.70									
7,300.00	7.99	179.702	7,049.70	1,585.06	-205.37	-1,586.10	10.00	10.00	0.00
7,400.00	17.99	179.702	7,147.02	1,562.60	-205.25	-1,563.65	10.00	10.00	0.00
7,500.00	27.99	179.702	7,238.96	1,523.59	-205.05	-1,524.64	10.00	10.00	0.00
7,600.00	37.99	179.702	7,322.73	1,469.21	-204.77	-1,470.25	10.00	10.00	0.00
7,700.00	47.99	179.702	7,395.78	1,401.11	-204.41	-1,402.15	10.00	10.00	0.00
7,800.00	57.99	179.702	7,455.89	1,321.35	-204.00	-1,322.40	10.00	10.00	0.00
7,900.00	67.99	179.702	7,501.25	1,232.37	-203.54	-1,233.42	10.00	10.00	0.00
8,000.00	77.99	179.702	7,530.46	1,136.87	-203.04	-1,137.91	10.00	10.00	0.00
8,100.00	87.99	179.702	7,542.65	1,037.74	-202.52	-1,038.78	10.00	10.00	0.00
8,120.08	90.00	179.702	7,543.00	1,017.67	-202.42	-1,018.71	10.00	10.00	0.00
Start 10335.56 hold at 8120.08 MD									
8,200.00	90.00	179.702	7,543.00	937.75	-202.00	-938.79	0.00	0.00	0.00
8,300.00	90.00	179.702	7,543.00	837.75	-201.48	-838.79	0.00	0.00	0.00
8,400.00	90.00	179.702	7,543.00	737.75	-200.96	-738.79	0.00	0.00	0.00
8,500.00	90.00	179.702	7,543.00	637.75	-200.44	-638.79	0.00	0.00	0.00
8,600.00	90.00	179.702	7,543.00	537.75	-199.92	-538.79	0.00	0.00	0.00
8,700.00	90.00	179.702	7,543.00	437.76	-199.40	-438.79	0.00	0.00	0.00
8,800.00	90.00	179.702	7,543.00	337.76	-198.88	-338.79	0.00	0.00	0.00
8,900.00	90.00	179.702	7,543.00	237.76	-198.36	-238.79	0.00	0.00	0.00
9,000.00	90.00	179.702	7,543.00	137.76	-197.84	-138.79	0.00	0.00	0.00
9,100.00	90.00	179.702	7,543.00	37.76	-197.32	-38.79	0.00	0.00	0.00

<b>Database:</b>	Casper District	<b>Local Co-ordinate Reference:</b>	Well Fox Creek 34-0263B
<b>Company:</b>	HighPoint Resources	<b>TVD Reference:</b>	GL 5450' & KB 20' @ 5470.00ft
<b>Project:</b>	Weld County, CO NAD 83	<b>MD Reference:</b>	GL 5450' & KB 20' @ 5470.00ft
<b>Site:</b>	Fox Creek 34 NW pad	<b>North Reference:</b>	True
<b>Well:</b>	Fox Creek 34-0263B	<b>Survey Calculation Method:</b>	Minimum Curvature
<b>Wellbore:</b>	OH		
<b>Design:</b>	Plan 1		

Planned Survey									
Measured Depth (ft)	Inclination (°)	Azimuth (°)	Vertical Depth (ft)	+N/-S (ft)	+E/-W (ft)	Vertical Section (ft)	Dogleg Rate (°/100ft)	Build Rate (°/100ft)	Turn Rate (°/100ft)
9,200.00	90.00	179.702	7,543.00	-62.24	-196.80	61.21	0.00	0.00	0.00
9,300.00	90.00	179.702	7,543.00	-162.24	-196.28	161.21	0.00	0.00	0.00
9,400.00	90.00	179.702	7,543.00	-262.23	-195.76	261.21	0.00	0.00	0.00
9,500.00	90.00	179.702	7,543.00	-362.23	-195.24	361.21	0.00	0.00	0.00
9,600.00	90.00	179.702	7,543.00	-462.23	-194.72	461.21	0.00	0.00	0.00
9,700.00	90.00	179.702	7,543.00	-562.23	-194.20	561.21	0.00	0.00	0.00
9,800.00	90.00	179.702	7,543.00	-662.23	-193.68	661.21	0.00	0.00	0.00
9,900.00	90.00	179.702	7,543.00	-762.23	-193.16	761.21	0.00	0.00	0.00
10,000.00	90.00	179.702	7,543.00	-862.23	-192.64	861.21	0.00	0.00	0.00
10,100.00	90.00	179.702	7,543.00	-962.22	-192.12	961.21	0.00	0.00	0.00
10,200.00	90.00	179.702	7,543.00	-1,062.22	-191.60	1,061.21	0.00	0.00	0.00
10,300.00	90.00	179.702	7,543.00	-1,162.22	-191.07	1,161.21	0.00	0.00	0.00
10,400.00	90.00	179.702	7,543.00	-1,262.22	-190.55	1,261.21	0.00	0.00	0.00
10,500.00	90.00	179.702	7,543.00	-1,362.22	-190.03	1,361.21	0.00	0.00	0.00
10,600.00	90.00	179.702	7,543.00	-1,462.22	-189.51	1,461.21	0.00	0.00	0.00
10,700.00	90.00	179.702	7,543.00	-1,562.22	-188.99	1,561.21	0.00	0.00	0.00
10,800.00	90.00	179.702	7,543.00	-1,662.22	-188.47	1,661.21	0.00	0.00	0.00
10,900.00	90.00	179.702	7,543.00	-1,762.21	-187.95	1,761.21	0.00	0.00	0.00
11,000.00	90.00	179.702	7,543.00	-1,862.21	-187.43	1,861.21	0.00	0.00	0.00
11,100.00	90.00	179.702	7,543.00	-1,962.21	-186.91	1,961.21	0.00	0.00	0.00
11,200.00	90.00	179.702	7,543.00	-2,062.21	-186.39	2,061.21	0.00	0.00	0.00
11,300.00	90.00	179.702	7,543.00	-2,162.21	-185.87	2,161.21	0.00	0.00	0.00
11,400.00	90.00	179.702	7,543.00	-2,262.21	-185.35	2,261.21	0.00	0.00	0.00
11,500.00	90.00	179.702	7,543.00	-2,362.21	-184.83	2,361.21	0.00	0.00	0.00
11,600.00	90.00	179.702	7,543.00	-2,462.20	-184.31	2,461.21	0.00	0.00	0.00
11,700.00	90.00	179.702	7,543.00	-2,562.20	-183.79	2,561.21	0.00	0.00	0.00
11,800.00	90.00	179.702	7,543.00	-2,662.20	-183.27	2,661.21	0.00	0.00	0.00
11,900.00	90.00	179.702	7,543.00	-2,762.20	-182.75	2,761.21	0.00	0.00	0.00
12,000.00	90.00	179.702	7,543.00	-2,862.20	-182.23	2,861.21	0.00	0.00	0.00
12,100.00	90.00	179.702	7,543.00	-2,962.20	-181.71	2,961.21	0.00	0.00	0.00
12,200.00	90.00	179.702	7,543.00	-3,062.20	-181.19	3,061.21	0.00	0.00	0.00
12,300.00	90.00	179.702	7,543.00	-3,162.20	-180.67	3,161.21	0.00	0.00	0.00
12,400.00	90.00	179.702	7,543.00	-3,262.19	-180.15	3,261.21	0.00	0.00	0.00
12,500.00	90.00	179.702	7,543.00	-3,362.19	-179.63	3,361.21	0.00	0.00	0.00
12,600.00	90.00	179.702	7,543.00	-3,462.19	-179.11	3,461.21	0.00	0.00	0.00
12,700.00	90.00	179.702	7,543.00	-3,562.19	-178.59	3,561.21	0.00	0.00	0.00
12,800.00	90.00	179.702	7,543.00	-3,662.19	-178.07	3,661.21	0.00	0.00	0.00
12,900.00	90.00	179.702	7,543.00	-3,762.19	-177.55	3,761.21	0.00	0.00	0.00
13,000.00	90.00	179.702	7,543.00	-3,862.19	-177.02	3,861.21	0.00	0.00	0.00
13,100.00	90.00	179.702	7,543.00	-3,962.18	-176.50	3,961.21	0.00	0.00	0.00
13,200.00	90.00	179.702	7,543.00	-4,062.18	-175.98	4,061.21	0.00	0.00	0.00
13,300.00	90.00	179.702	7,543.00	-4,162.18	-175.46	4,161.21	0.00	0.00	0.00
13,400.00	90.00	179.702	7,543.00	-4,262.18	-174.94	4,261.21	0.00	0.00	0.00
13,500.00	90.00	179.702	7,543.00	-4,362.18	-174.42	4,361.21	0.00	0.00	0.00
13,600.00	90.00	179.702	7,543.00	-4,462.18	-173.90	4,461.21	0.00	0.00	0.00
13,700.00	90.00	179.702	7,543.00	-4,562.18	-173.38	4,561.21	0.00	0.00	0.00
13,800.00	90.00	179.702	7,543.00	-4,662.17	-172.86	4,661.21	0.00	0.00	0.00
13,900.00	90.00	179.702	7,543.00	-4,762.17	-172.34	4,761.21	0.00	0.00	0.00
14,000.00	90.00	179.702	7,543.00	-4,862.17	-171.82	4,861.21	0.00	0.00	0.00
14,100.00	90.00	179.702	7,543.00	-4,962.17	-171.30	4,961.21	0.00	0.00	0.00
14,200.00	90.00	179.702	7,543.00	-5,062.17	-170.78	5,061.21	0.00	0.00	0.00
14,300.00	90.00	179.702	7,543.00	-5,162.17	-170.26	5,161.21	0.00	0.00	0.00
14,400.00	90.00	179.702	7,543.00	-5,262.17	-169.74	5,261.21	0.00	0.00	0.00
14,500.00	90.00	179.702	7,543.00	-5,362.17	-169.22	5,361.21	0.00	0.00	0.00

<b>Database:</b>	Casper District	<b>Local Co-ordinate Reference:</b>	Well Fox Creek 34-0263B
<b>Company:</b>	HighPoint Resources	<b>TVD Reference:</b>	GL 5450' & KB 20' @ 5470.00ft
<b>Project:</b>	Weld County, CO NAD 83	<b>MD Reference:</b>	GL 5450' & KB 20' @ 5470.00ft
<b>Site:</b>	Fox Creek 34 NW pad	<b>North Reference:</b>	True
<b>Well:</b>	Fox Creek 34-0263B	<b>Survey Calculation Method:</b>	Minimum Curvature
<b>Wellbore:</b>	OH		
<b>Design:</b>	Plan 1		

Planned Survey									
Measured Depth (ft)	Inclination (°)	Azimuth (°)	Vertical Depth (ft)	+N/-S (ft)	+E/-W (ft)	Vertical Section (ft)	Dogleg Rate (°/100ft)	Build Rate (°/100ft)	Turn Rate (°/100ft)
14,600.00	90.00	179.702	7,543.00	-5,462.16	-168.70	5,461.21	0.00	0.00	0.00
14,700.00	90.00	179.702	7,543.00	-5,562.16	-168.18	5,561.21	0.00	0.00	0.00
14,800.00	90.00	179.702	7,543.00	-5,662.16	-167.66	5,661.21	0.00	0.00	0.00
14,900.00	90.00	179.702	7,543.00	-5,762.16	-167.14	5,761.21	0.00	0.00	0.00
15,000.00	90.00	179.702	7,543.00	-5,862.16	-166.62	5,861.21	0.00	0.00	0.00
15,100.00	90.00	179.702	7,543.00	-5,962.16	-166.10	5,961.21	0.00	0.00	0.00
15,200.00	90.00	179.702	7,543.00	-6,062.16	-165.58	6,061.21	0.00	0.00	0.00
15,300.00	90.00	179.702	7,543.00	-6,162.15	-165.06	6,161.21	0.00	0.00	0.00
15,400.00	90.00	179.702	7,543.00	-6,262.15	-164.54	6,261.21	0.00	0.00	0.00
15,500.00	90.00	179.702	7,543.00	-6,362.15	-164.02	6,361.21	0.00	0.00	0.00
15,600.00	90.00	179.702	7,543.00	-6,462.15	-163.50	6,461.21	0.00	0.00	0.00
15,700.00	90.00	179.702	7,543.00	-6,562.15	-162.98	6,561.21	0.00	0.00	0.00
15,800.00	90.00	179.702	7,543.00	-6,662.15	-162.45	6,661.21	0.00	0.00	0.00
15,900.00	90.00	179.702	7,543.00	-6,762.15	-161.93	6,761.21	0.00	0.00	0.00
16,000.00	90.00	179.702	7,543.00	-6,862.15	-161.41	6,861.21	0.00	0.00	0.00
16,100.00	90.00	179.702	7,543.00	-6,962.14	-160.89	6,961.21	0.00	0.00	0.00
16,200.00	90.00	179.702	7,543.00	-7,062.14	-160.37	7,061.21	0.00	0.00	0.00
16,300.00	90.00	179.702	7,543.00	-7,162.14	-159.85	7,161.21	0.00	0.00	0.00
16,400.00	90.00	179.702	7,543.00	-7,262.14	-159.33	7,261.21	0.00	0.00	0.00
16,500.00	90.00	179.702	7,543.00	-7,362.14	-158.81	7,361.21	0.00	0.00	0.00
16,600.00	90.00	179.702	7,543.00	-7,462.14	-158.29	7,461.21	0.00	0.00	0.00
16,700.00	90.00	179.702	7,543.00	-7,562.14	-157.77	7,561.21	0.00	0.00	0.00
16,800.00	90.00	179.702	7,543.00	-7,662.13	-157.25	7,661.21	0.00	0.00	0.00
16,900.00	90.00	179.702	7,543.00	-7,762.13	-156.73	7,761.21	0.00	0.00	0.00
17,000.00	90.00	179.702	7,543.00	-7,862.13	-156.21	7,861.21	0.00	0.00	0.00
17,100.00	90.00	179.702	7,543.00	-7,962.13	-155.69	7,961.21	0.00	0.00	0.00
17,200.00	90.00	179.702	7,543.00	-8,062.13	-155.17	8,061.21	0.00	0.00	0.00
17,300.00	90.00	179.702	7,543.00	-8,162.13	-154.65	8,161.21	0.00	0.00	0.00
17,400.00	90.00	179.702	7,543.00	-8,262.13	-154.13	8,261.21	0.00	0.00	0.00
17,500.00	90.00	179.702	7,543.00	-8,362.12	-153.61	8,361.21	0.00	0.00	0.00
17,600.00	90.00	179.702	7,543.00	-8,462.12	-153.09	8,461.21	0.00	0.00	0.00
17,700.00	90.00	179.702	7,543.00	-8,562.12	-152.57	8,561.21	0.00	0.00	0.00
17,800.00	90.00	179.702	7,543.00	-8,662.12	-152.05	8,661.21	0.00	0.00	0.00
17,900.00	90.00	179.702	7,543.00	-8,762.12	-151.53	8,761.21	0.00	0.00	0.00
18,000.00	90.00	179.702	7,543.00	-8,862.12	-151.01	8,861.21	0.00	0.00	0.00
18,100.00	90.00	179.702	7,543.00	-8,962.12	-150.49	8,961.21	0.00	0.00	0.00
18,200.00	90.00	179.702	7,543.00	-9,062.12	-149.97	9,061.21	0.00	0.00	0.00
18,300.00	90.00	179.702	7,543.00	-9,162.11	-149.45	9,161.21	0.00	0.00	0.00
18,400.00	90.00	179.702	7,543.00	-9,262.11	-148.93	9,261.21	0.00	0.00	0.00
18,455.63	90.00	179.702	7,543.00	-9,317.75	-148.64	9,316.85	0.00	0.00	0.00
TD at 18455.64									

<b>Database:</b>	Casper District	<b>Local Co-ordinate Reference:</b>	Well Fox Creek 34-0263B
<b>Company:</b>	HighPoint Resources	<b>TVD Reference:</b>	GL 5450' & KB 20' @ 5470.00ft
<b>Project:</b>	Weld County, CO NAD 83	<b>MD Reference:</b>	GL 5450' & KB 20' @ 5470.00ft
<b>Site:</b>	Fox Creek 34 NW pad	<b>North Reference:</b>	True
<b>Well:</b>	Fox Creek 34-0263B	<b>Survey Calculation Method:</b>	Minimum Curvature
<b>Wellbore:</b>	OH		
<b>Design:</b>	Plan 1		

Design Targets									
Target Name	Dip Angle	Dip Dir.	TVD	+N/-S	+E/-W	Northing	Easting	Latitude	Longitude
- hit/miss target	(°)	(°)	(ft)	(ft)	(ft)	(usft)	(usft)		
- Shape									
Fox Creek 34-0263B PB	0.00	0.000	7,543.00	-9,317.75	-148.64	1,588,678.46	3,296,856.76	40° 56' 39.656 N	104° 25' 31.699 W
- plan hits target center									
- Point									
Fox Creek 34-0263B LP	0.00	0.000	7,543.00	1,017.68	-202.42	1,599,012.45	3,296,677.67	40° 58' 21.774 N	104° 25' 32.401 W
- plan misses target center by 0.01ft at 8120.07ft MD (7543.00 TVD, 1017.68 N, -202.42 E)									
- Point									

Plan Annotations				
Measured Depth	Vertical Depth	Local Coordinates		Comment
(ft)	(ft)	+N/-S (ft)	+E/-W (ft)	
500.00	500.00	0.00	0.00	Start Build 2.00
750.00	749.68	10.81	-1.40	Start 953.95 hold at 750.00 MD
1,703.95	1,700.00	93.27	-12.04	Start DLS 2.00 TFO 0.00
2,465.20	2,440.70	257.64	-33.27	Start 3206.54 hold at 2465.20 MD
5,671.74	5,449.53	1,357.04	-175.24	Start Drop -1.50
7,020.08	6,770.04	1,590.62	-205.40	Start 200.00 hold at 7020.08 MD
7,220.08	6,970.04	1,590.62	-205.40	Start DLS 10.00 TFO 179.70
8,120.08	7,543.00	1,017.67	-202.42	Start 10335.56 hold at 8120.08 MD
18,455.63	7,543.00	-9,317.75	-148.64	TD at 18455.64