

NOBLE ENERGY, INC

Location: COLORADO Slot: SLOT#38 HURLEY H26-712(2233'FNL&952'FEL,SEC.26)
Field: WELD COUNTY (NOBLE NAD 83 GRID) Well: HURLEY H26-712
Facility: SEC.26-T03N-R65W Wellbore: HURLEY H26-712 PWB

Plot reference wellpath is HURLEY H26-712 (REV-A.1) PWP	Grid System: NAD83 / Lambert Colorado SP, Northern Zone (501), US feet
True vertical depths are referenced to RIG (30'KB) (RKB)	* = Wellpath was transformed from a different geodetic datum
Measured depths are referenced to RIG (30'KB) (RKB)	North Reference: Grid north
RIG (30'KB) (RKB) to Mean Sea Level: 4884 feet	Scale: True distance
Mean Sea Level to Ground level (At Slot: SLOT#38 HURLEY H26-712(2233'FNL&952'FEL,SEC.26)): 0 feet	Depths are in feet
Coordinates are in feet referenced to Slot	Created by: guensler on 2018-08-08
	Database: WA_DEN_Denver_Defn

Survey Program

Start MD (ft)	End MD (ft)	Tool	Model	Log Name/Comment	Wellbore
30.00	16206.16	OWSG MWD rev2	OWSG MWD rev2 + IFR1 + Multi-Station Correction		HURLEY H26-712 PWB

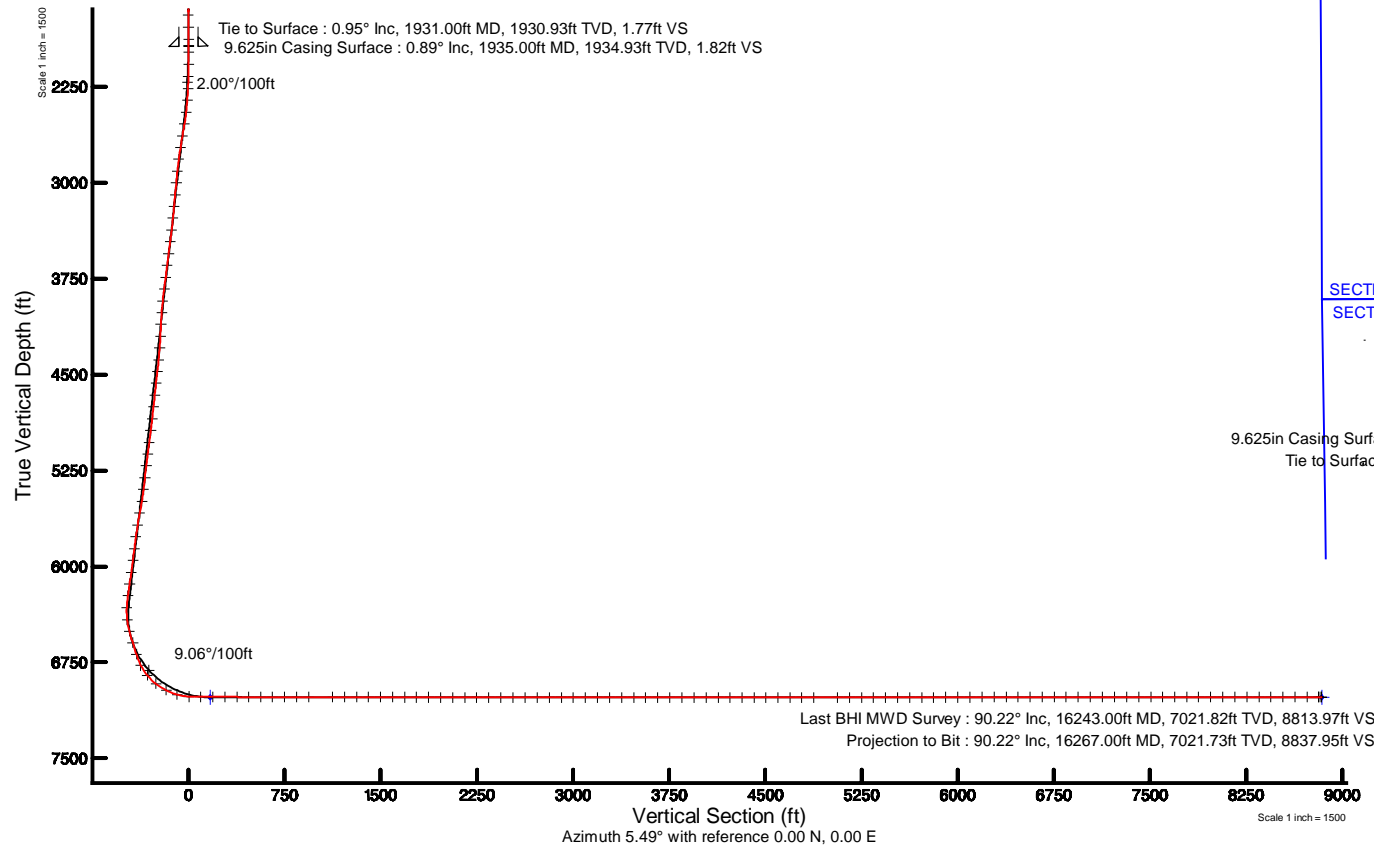
Comments

SURFACE LOCATION: SENE

40.19740N

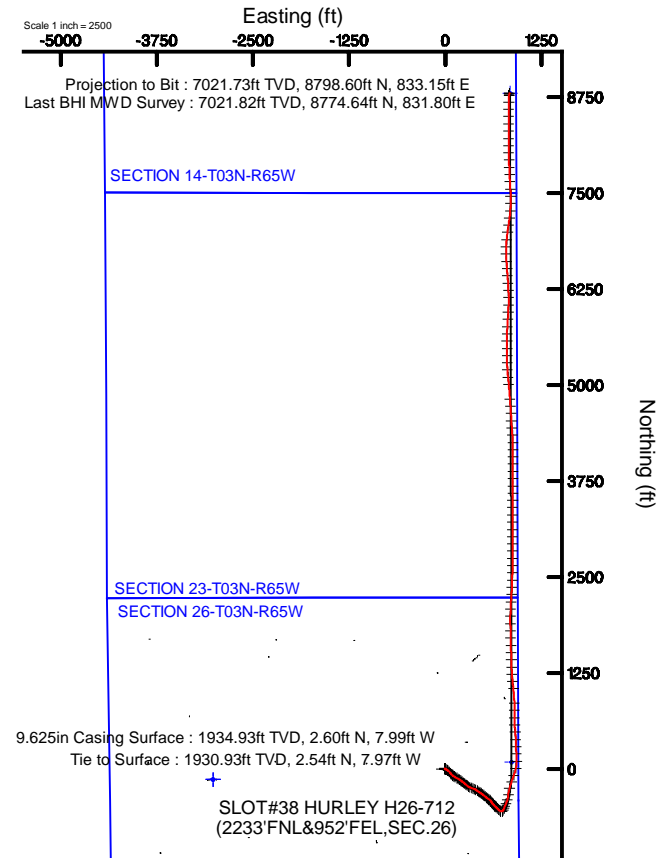
104.62460W

API: 05-123-46770



Location Information

Facility Name			Grid East (US ft)	Grid North (US ft)	Latitude	Longitude
SEC.26-T03N-R65W			3241514.116	1315823.443	40°11'49.560"N	104°38'07.476"W
Slot	Local N (ft)	Local E (ft)	Grid East (US ft)	Grid North (US ft)	Latitude	Longitude
SLOT#38 HURLEY H26-712(2233'FNL&952'FEL,SEC.26)	138.91	3018.62	3244532.599	1315962.349	40°11'50.640"N	104°37'28.560"W
RIG (30'KB) (RKB) to Ground level (At Slot: SLOT#38 HURLEY H26-712(2233'FNL&952'FEL,SEC.26))					4884ft	
Mean Sea Level to Ground level (At Slot: SLOT#38 HURLEY H26-712(2233'FNL&952'FEL,SEC.26))					0ft	
RIG (30'KB) (RKB) to Mean Sea Level					4884ft	





Actual Wellpath Report

HURLEY H26-712 AWP

Page 1 of 9



REFERENCE WELLPATH IDENTIFICATION			
Operator	NOBLE ENERGY, INC	Slot	SLOT#38 HURLEY H26-712(2233'FNL&952'FEL,SEC.26)
Area	COLORADO	Well	HURLEY H26-712
Field	WELD COUNTY (NOBLE NAD 83 GRID)	Wellbore	HURLEY H26-712 AWB
Facility	SEC.26-T03N-R65W		

REPORT SETUP INFORMATION			
Projection System	NAD83 / Lambert Colorado SP, Northern Zone (501), US feet	Software System	WellArchitect® 5.0
North Reference	Grid	User	Guenaler
Scale	0.999957	Report Generated	8/8/2018 at 9:45:06 AM
Convergence at slot	0.57° East	Database/Source file	WA_DEN_Denver_Defn/HURLEY_H26-712_AWP.xml

WELLPATH LOCATION						
	Local coordinates		Grid coordinates		Geographic coordinates	
	North[ft]	East[ft]	Easting[US ft]	Northing[US ft]	Latitude	Longitude
Slot Location	138.91	3018.62	3244532.60	1315962.35	40°11'50.640"N	104°37'28.560"W
Facility Reference Pt			3241514.12	1315823.44	40°11'49.560"N	104°38'07.476"W
Field Reference Pt			3000000.00	4454105.15	48°46'34.315"N	105°30'00.000"W

WELLPATH DATUM			
Calculation method	Minimum curvature	RIG (30'KB) (RKB) to Facility Vertical Datum	4884.00ft
Horizontal Reference Pt	Slot	RIG (30'KB) (RKB) to Mean Sea Level	4884.00ft
Vertical Reference Pt	RIG (30'KB) (RKB)	RIG (30'KB) (RKB) to Ground Level at Slot (SLOT#38 HURLEY H26-712 (2233'FNL&952'FEL,SEC.26))	4884.00ft
MD Reference Pt	RIG (30'KB) (RKB)	Section Origin	N 0.00, E 0.00 ft
Field Vertical Reference	Mean Sea Level	Section Azimuth	5.49°



Actual Wellpath Report
HURLEY H26-712 AWP
Page 2 of 9



REFERENCE WELLPATH IDENTIFICATION			
Operator	NOBLE ENERGY, INC	Slot	SLOT#38 HURLEY H26-712(2233'FNL&952'FEL,SEC.26)
Area	COLORADO	Well	HURLEY H26-712
Field	WELD COUNTY (NOBLE NAD 83 GRID)	Wellbore	HURLEY H26-712 AWB
Facility	SEC.26-T03N-R65W		

WELLPATH DATA (173 stations)										
MD [ft]	Inclination [°]	Azimuth [°]	TVD [ft]	Vert Sect [ft]	North [ft]	East [ft]	Latitude	Longitude	DLS [°/100ft]	Comments
0.00	0.000	358.510	0.00	0.00	0.00	0.00	40°11'50.640"N	104°37'28.560"W	0.00	
85.00	0.030	358.510	85.00	0.02	0.02	0.00	40°11'50.640"N	104°37'28.560"W	0.04	
181.00	0.140	347.980	181.00	0.16	0.16	-0.03	40°11'50.642"N	104°37'28.560"W	0.12	
273.00	0.400	345.220	273.00	0.57	0.58	-0.13	40°11'50.646"N	104°37'28.562"W	0.28	
367.00	0.240	75.700	367.00	0.94	0.95	-0.02	40°11'50.649"N	104°37'28.560"W	0.50	
462.00	0.210	212.820	462.00	0.85	0.85	0.07	40°11'50.648"N	104°37'28.559"W	0.44	
556.00	0.210	250.690	556.00	0.63	0.65	-0.18	40°11'50.646"N	104°37'28.562"W	0.14	
651.00	0.290	7.690	651.00	0.80	0.83	-0.31	40°11'50.648"N	104°37'28.564"W	0.45	
745.00	0.140	65.500	745.00	1.09	1.11	-0.18	40°11'50.651"N	104°37'28.562"W	0.26	
840.00	0.070	64.290	840.00	1.18	1.19	-0.02	40°11'50.652"N	104°37'28.560"W	0.07	
934.00	0.070	228.870	934.00	1.17	1.17	-0.01	40°11'50.652"N	104°37'28.560"W	0.15	
1029.00	0.070	303.720	1029.00	1.15	1.17	-0.10	40°11'50.652"N	104°37'28.561"W	0.09	
1123.00	0.300	288.310	1122.99	1.23	1.28	-0.38	40°11'50.653"N	104°37'28.565"W	0.25	
1218.00	0.210	256.790	1217.99	1.23	1.32	-0.79	40°11'50.653"N	104°37'28.570"W	0.17	
1312.00	0.530	245.650	1311.99	0.96	1.10	-1.35	40°11'50.651"N	104°37'28.577"W	0.35	
1407.00	0.720	227.930	1406.99	0.30	0.52	-2.20	40°11'50.645"N	104°37'28.588"W	0.28	
1501.00	0.850	238.870	1500.98	-0.55	-0.24	-3.23	40°11'50.638"N	104°37'28.602"W	0.21	
1596.00	0.790	267.180	1595.97	-1.06	-0.64	-4.49	40°11'50.634"N	104°37'28.618"W	0.43	
1690.00	0.910	287.030	1689.96	-1.01	-0.45	-5.85	40°11'50.636"N	104°37'28.635"W	0.34	
1785.00	0.950	326.980	1784.95	-0.24	0.43	-7.00	40°11'50.645"N	104°37'28.650"W	0.67	
1879.00	0.880	338.780	1878.93	1.01	1.76	-7.69	40°11'50.658"N	104°37'28.659"W	0.21	
1931.00	0.950	341.760	1930.93	1.77	2.54	-7.97	40°11'50.666"N	104°37'28.662"W	0.16	Tie to Surface
1982.00	0.290	303.510	1981.92	2.21	3.01	-8.21	40°11'50.671"N	104°37'28.665"W	1.46	
2076.00	2.940	114.070	2075.89	1.56	2.16	-6.20	40°11'50.662"N	104°37'28.640"W	3.43	
2171.00	6.030	109.370	2170.59	-0.42	-0.49	0.73	40°11'50.635"N	104°37'28.551"W	3.27	
2265.00	8.020	113.920	2263.88	-3.67	-4.79	11.38	40°11'50.592"N	104°37'28.414"W	2.20	
2360.00	10.280	119.740	2357.66	-9.25	-11.68	24.80	40°11'50.522"N	104°37'28.242"W	2.57	
2454.00	12.090	129.070	2449.88	-18.14	-22.05	39.73	40°11'50.418"N	104°37'28.051"W	2.72	
2549.00	13.160	139.250	2542.59	-31.13	-36.51	54.52	40°11'50.274"N	104°37'27.862"W	2.59	
2643.00	13.250	143.480	2634.11	-46.53	-53.28	67.91	40°11'50.107"N	104°37'27.692"W	1.03	



Actual Wellpath Report

HURLEY H26-712 AWP



REFERENCE WELLPATH IDENTIFICATION			
Operator	NOBLE ENERGY, INC	Slot	SLOT#38 HURLEY H26-712(2233'FNL&952'FEL,SEC.26)
Area	COLORADO	Well	HURLEY H26-712
Field	WELD COUNTY (NOBLE NAD 83 GRID)	Wellbore	HURLEY H26-712 AWB
Facility	SEC.26-T03N-R65W		

WELLPATH DATA (173 stations)										
MD [ft]	Inclination [°]	Azimuth [°]	TVD [ft]	Vert Sect [ft]	North [ft]	East [ft]	Latitude	Longitude	DLS [°/100ft]	Comments
2738.00	13.060	139.300	2726.62	-62.05	-70.16	81.39	40°11'49.939"N	104°37'27.520"W	1.02	
2832.00	13.260	129.670	2818.16	-75.46	-85.10	96.62	40°11'49.790"N	104°37'27.326"W	2.34	
2927.00	13.200	120.250	2910.65	-86.13	-97.52	114.38	40°11'49.665"N	104°37'27.099"W	2.27	
3021.00	13.110	119.860	3002.19	-95.02	-108.23	132.89	40°11'49.558"N	104°37'26.861"W	0.13	
3116.00	13.090	120.680	3094.71	-104.04	-119.09	151.49	40°11'49.448"N	104°37'26.623"W	0.20	
3211.00	13.200	118.180	3187.22	-112.81	-129.70	170.30	40°11'49.342"N	104°37'26.382"W	0.61	
3305.00	13.000	120.150	3278.78	-121.36	-140.08	188.90	40°11'49.237"N	104°37'26.144"W	0.52	
3400.00	12.860	128.760	3371.38	-131.62	-152.06	206.39	40°11'49.117"N	104°37'25.920"W	2.03	
3494.00	13.110	130.250	3462.98	-143.43	-165.50	222.68	40°11'48.983"N	104°37'25.712"W	0.44	
3589.00	13.000	126.290	3555.52	-155.05	-178.79	239.52	40°11'48.850"N	104°37'25.496"W	0.95	
3683.00	12.650	126.210	3647.18	-165.72	-191.12	256.35	40°11'48.726"N	104°37'25.281"W	0.37	
3778.00	11.730	133.980	3740.04	-177.04	-203.98	271.69	40°11'48.598"N	104°37'25.085"W	1.98	
3872.00	12.800	132.830	3831.89	-189.31	-217.69	286.20	40°11'48.461"N	104°37'24.900"W	1.17	
3967.00	12.930	123.820	3924.52	-200.73	-230.76	302.75	40°11'48.330"N	104°37'24.688"W	2.11	
4061.00	13.050	113.640	4016.12	-209.03	-240.87	321.21	40°11'48.228"N	104°37'24.451"W	2.43	
4156.00	12.960	105.830	4108.69	-214.28	-248.08	341.29	40°11'48.155"N	104°37'24.194"W	1.85	
4250.00	12.800	109.500	4200.33	-218.70	-254.43	361.25	40°11'48.091"N	104°37'23.937"W	0.89	
4345.00	12.790	114.980	4292.98	-224.75	-262.39	380.70	40°11'48.010"N	104°37'23.688"W	1.28	
4439.00	12.800	120.430	4384.64	-232.61	-272.05	399.11	40°11'47.913"N	104°37'23.452"W	1.28	
4534.00	12.890	125.670	4477.27	-242.38	-283.56	416.79	40°11'47.797"N	104°37'23.225"W	1.23	
4628.00	12.960	125.990	4568.89	-253.00	-295.87	433.84	40°11'47.674"N	104°37'23.007"W	0.11	
4723.00	12.760	122.200	4661.51	-263.12	-307.72	451.34	40°11'47.555"N	104°37'22.783"W	0.91	
4817.00	12.720	123.710	4753.19	-272.68	-319.00	468.73	40°11'47.442"N	104°37'22.561"W	0.36	
4912.00	12.810	127.070	4845.85	-283.14	-331.15	485.83	40°11'47.320"N	104°37'22.342"W	0.79	
5006.00	12.810	128.470	4937.51	-294.27	-343.91	502.31	40°11'47.193"N	104°37'22.131"W	0.33	
5101.00	12.850	130.440	5030.14	-306.06	-357.32	518.59	40°11'47.059"N	104°37'21.923"W	0.46	
5196.00	12.880	129.350	5122.75	-318.01	-370.88	534.82	40°11'46.923"N	104°37'21.716"W	0.26	
5290.00	12.700	126.620	5214.42	-329.18	-383.69	551.21	40°11'46.795"N	104°37'21.506"W	0.67	
5385.00	12.830	124.470	5307.07	-339.69	-395.89	568.29	40°11'46.673"N	104°37'21.287"W	0.52	
5479.00	12.650	130.130	5398.76	-350.60	-408.43	584.77	40°11'46.547"N	104°37'21.077"W	1.34	



Actual Wellpath Report

HURLEY H26-712 AWP



REFERENCE WELLPATH IDENTIFICATION			
Operator	NOBLE ENERGY, INC	Slot	SLOT#38 HURLEY H26-712(2233'FNL&952'FEL,SEC.26)
Area	COLORADO	Well	HURLEY H26-712
Field	WELD COUNTY (NOBLE NAD 83 GRID)	Wellbore	HURLEY H26-712 AWB
Facility	SEC.26-T03N-R65W		

WELLPATH DATA (173 stations)										
MD [ft]	Inclination [°]	Azimuth [°]	TVD [ft]	Vert Sect [ft]	North [ft]	East [ft]	Latitude	Longitude	DLS [°/100ft]	Comments
5574.00	12.220	143.870	5491.55	-364.03	-423.26	598.65	40°11'46.399"N	104°37'20.900"W	3.14	
5668.00	12.420	151.000	5583.39	-379.80	-440.14	609.42	40°11'46.231"N	104°37'20.763"W	1.63	
5763.00	12.410	144.640	5676.18	-395.94	-457.40	620.28	40°11'46.060"N	104°37'20.625"W	1.44	
5857.00	12.310	133.300	5768.01	-409.73	-472.51	633.42	40°11'45.909"N	104°37'20.458"W	2.58	
5952.00	12.270	129.940	5860.84	-421.65	-485.94	648.53	40°11'45.775"N	104°37'20.265"W	0.75	
6046.00	12.280	134.540	5952.69	-433.60	-499.36	663.31	40°11'45.641"N	104°37'20.076"W	1.04	
6141.00	12.090	135.450	6045.55	-446.35	-513.54	677.49	40°11'45.499"N	104°37'19.895"W	0.28	
6235.00	12.790	133.550	6137.34	-459.09	-527.72	691.94	40°11'45.358"N	104°37'19.711"W	0.86	
6330.00	12.720	132.330	6230.00	-471.84	-542.01	707.29	40°11'45.215"N	104°37'19.515"W	0.29	
6424.00	11.330	114.590	6321.96	-481.07	-552.82	723.35	40°11'45.107"N	104°37'19.309"W	4.18	
6519.00	11.960	60.480	6415.27	-478.47	-551.85	740.45	40°11'45.115"N	104°37'19.089"W	11.11	
6613.00	17.360	31.280	6506.30	-460.22	-535.04	756.23	40°11'45.279"N	104°37'18.883"W	9.57	
6707.00	16.620	14.930	6596.25	-434.31	-510.05	766.99	40°11'45.525"N	104°37'18.742"W	5.13	
6802.00	19.010	24.820	6686.71	-406.30	-482.87	776.98	40°11'45.793"N	104°37'18.609"W	4.05	
6896.00	26.950	26.860	6773.18	-371.96	-449.91	793.06	40°11'46.117"N	104°37'18.398"W	8.49	
6991.00	40.020	12.620	6852.36	-321.31	-400.61	809.56	40°11'46.602"N	104°37'18.179"W	15.97	
7085.00	53.260	6.880	6916.78	-253.33	-333.40	820.73	40°11'47.265"N	104°37'18.027"W	14.76	
7180.00	63.050	15.060	6966.91	-173.24	-254.43	836.35	40°11'48.044"N	104°37'17.815"W	12.63	
7274.00	73.400	18.940	7001.74	-87.86	-171.12	861.93	40°11'48.865"N	104°37'17.475"W	11.66	
7369.00	87.140	19.510	7017.76	2.88	-82.92	892.70	40°11'49.733"N	104°37'17.067"W	14.48	
7463.00	90.000	12.630	7020.11	95.19	7.31	918.69	40°11'50.622"N	104°37'16.721"W	7.92	
7557.00	90.030	0.150	7020.08	188.99	100.55	929.13	40°11'51.543"N	104°37'16.574"W	13.28	
7652.00	90.060	355.890	7020.01	283.16	195.47	925.85	40°11'52.481"N	104°37'16.604"W	4.48	
7747.00	89.570	358.610	7020.31	377.17	290.35	921.29	40°11'53.419"N	104°37'16.651"W	2.91	
7841.00	89.630	357.310	7020.97	470.36	384.28	917.94	40°11'54.348"N	104°37'16.682"W	1.38	
7935.00	89.720	354.390	7021.50	563.02	478.03	911.14	40°11'55.275"N	104°37'16.758"W	3.11	
8030.00	90.090	355.490	7021.66	656.41	572.65	902.76	40°11'56.210"N	104°37'16.854"W	1.22	
8124.00	89.970	359.830	7021.61	749.51	666.55	898.92	40°11'57.139"N	104°37'16.891"W	4.62	
8219.00	90.150	0.490	7021.51	844.10	761.55	899.19	40°11'58.077"N	104°37'16.876"W	0.72	
8313.00	90.030	359.370	7021.37	937.66	855.55	899.08	40°11'59.006"N	104°37'16.865"W	1.20	



Actual Wellpath Report
HURLEY H26-712 AWP
Page 5 of 9



REFERENCE WELLPATH IDENTIFICATION			
Operator	NOBLE ENERGY, INC	Slot	SLOT#38 HURLEY H26-712(2233'FNL&952'FEL,SEC.26)
Area	COLORADO	Well	HURLEY H26-712
Field	WELD COUNTY (NOBLE NAD 83 GRID)	Wellbore	HURLEY H26-712 AWB
Facility	SEC.26-T03N-R65W		

WELLPATH DATA (173 stations)										
MD [ft]	Inclination [°]	Azimuth [°]	TVD [ft]	Vert Sect [ft]	North [ft]	East [ft]	Latitude	Longitude	DLS [°/100ft]	Comments
8503.00	89.970	353.250	7021.37	1125.13	1045.07	886.85	40°12'00.880"N	104°37'16.998"W	3.22	
8597.00	89.940	354.180	7021.44	1217.15	1138.50	876.56	40°12'01.804"N	104°37'17.119"W	0.99	
8692.00	89.940	356.080	7021.54	1310.60	1233.15	868.50	40°12'02.741"N	104°37'17.211"W	2.00	
8786.00	89.880	357.890	7021.69	1403.56	1327.02	863.55	40°12'03.669"N	104°37'17.263"W	1.93	
8881.00	89.780	358.340	7021.97	1497.78	1421.97	860.43	40°12'04.607"N	104°37'17.291"W	0.49	
8975.00	89.880	358.150	7022.25	1591.02	1515.92	857.55	40°12'05.536"N	104°37'17.316"W	0.23	
9070.00	89.780	358.120	7022.53	1685.24	1610.87	854.46	40°12'06.474"N	104°37'17.344"W	0.11	
9164.00	89.850	358.920	7022.83	1778.55	1704.84	852.03	40°12'07.403"N	104°37'17.363"W	0.85	
9259.00	89.880	358.840	7023.06	1872.91	1799.82	850.17	40°12'08.342"N	104°37'17.375"W	0.09	
9353.00	89.880	358.610	7023.25	1966.26	1893.80	848.08	40°12'09.271"N	104°37'17.390"W	0.24	
9447.00	90.060	1.080	7023.30	2059.80	1987.79	847.83	40°12'10.199"N	104°37'17.381"W	2.63	
9542.00	89.970	2.400	7023.28	2154.59	2082.74	850.71	40°12'11.137"N	104°37'17.332"W	1.39	
9636.00	89.940	3.430	7023.35	2248.49	2176.62	855.49	40°12'12.065"N	104°37'17.258"W	1.10	
9731.00	90.030	4.260	7023.38	2343.45	2271.41	861.86	40°12'13.001"N	104°37'17.164"W	0.88	
9825.00	89.880	2.780	7023.45	2437.40	2365.23	867.63	40°12'13.927"N	104°37'17.078"W	1.58	
9919.00	89.970	1.820	7023.57	2531.25	2459.15	871.41	40°12'14.855"N	104°37'17.017"W	1.03	
10014.00	90.000	1.130	7023.60	2626.01	2554.12	873.85	40°12'15.793"N	104°37'16.973"W	0.73	
10108.00	89.970	0.520	7023.62	2719.70	2648.11	875.21	40°12'16.722"N	104°37'16.944"W	0.65	
10203.00	89.850	0.290	7023.77	2814.33	2743.10	875.88	40°12'17.660"N	104°37'16.923"W	0.27	
10297.00	89.940	0.140	7023.94	2907.93	2837.10	876.23	40°12'18.589"N	104°37'16.906"W	0.19	
10392.00	90.030	0.060	7023.97	3002.51	2932.10	876.40	40°12'19.528"N	104°37'16.892"W	0.13	
10486.00	90.090	359.740	7023.87	3096.06	3026.10	876.23	40°12'20.457"N	104°37'16.882"W	0.35	
10580.00	89.880	359.700	7023.90	3189.59	3120.10	875.77	40°12'21.386"N	104°37'16.876"W	0.23	
10675.00	89.850	0.190	7024.12	3284.14	3215.10	875.68	40°12'22.324"N	104°37'16.865"W	0.52	
10769.00	90.060	0.230	7024.19	3377.74	3309.10	876.03	40°12'23.253"N	104°37'16.849"W	0.23	
10864.00	89.970	0.600	7024.17	3472.37	3404.10	876.71	40°12'24.192"N	104°37'16.828"W	0.40	
10958.00	89.850	0.580	7024.32	3566.03	3498.09	877.68	40°12'25.121"N	104°37'16.803"W	0.13	
11053.00	90.030	0.220	7024.42	3660.65	3593.09	878.34	40°12'26.059"N	104°37'16.783"W	0.42	
11147.00	89.910	0.170	7024.46	3754.25	3687.09	878.66	40°12'26.988"N	104°37'16.767"W	0.14	
11242.00	89.880	0.680	7024.64	3848.88	3782.09	879.37	40°12'27.927"N	104°37'16.745"W	0.54	



Actual Wellpath Report

HURLEY H26-712 AWP



REFERENCE WELLPATH IDENTIFICATION			
Operator	NOBLE ENERGY, INC	Slot	SLOT#38 HURLEY H26-712(2233'FNL&952'FEL,SEC.26)
Area	COLORADO	Well	HURLEY H26-712
Field	WELD COUNTY (NOBLE NAD 83 GRID)	Wellbore	HURLEY H26-712 AWB
Facility	SEC.26-T03N-R65W		

WELLPATH DATA (173 stations)										
MD [ft]	Inclination [°]	Azimuth [°]	TVD [ft]	Vert Sect [ft]	North [ft]	East [ft]	Latitude	Longitude	DLS [°/100ft]	Comments
11336.00	90.090	0.700	7024.66	3942.55	3876.08	880.50	40°12'28.855"N	104°37'16.719"W	0.22	
11431.00	90.250	0.140	7024.38	4037.17	3971.08	881.20	40°12'29.794"N	104°37'16.698"W	0.61	
11526.00	90.150	359.710	7024.05	4131.73	4066.07	881.07	40°12'30.733"N	104°37'16.687"W	0.46	
11620.00	90.120	359.550	7023.83	4225.23	4160.07	880.47	40°12'31.662"N	104°37'16.683"W	0.17	
11714.00	90.060	357.950	7023.68	4318.58	4254.05	878.42	40°12'32.590"N	104°37'16.697"W	1.70	
11808.00	90.090	356.530	7023.56	4411.61	4347.94	873.89	40°12'33.519"N	104°37'16.744"W	1.51	
11903.00	89.910	355.850	7023.56	4505.36	4442.72	867.58	40°12'34.456"N	104°37'16.813"W	0.74	
11997.00	89.780	356.220	7023.81	4598.08	4536.50	861.08	40°12'35.383"N	104°37'16.885"W	0.42	
12092.00	90.180	356.450	7023.84	4691.87	4631.30	855.00	40°12'36.321"N	104°37'16.951"W	0.49	
12186.00	90.000	356.070	7023.70	4784.65	4725.10	848.87	40°12'37.248"N	104°37'17.018"W	0.45	
12281.00	89.910	355.730	7023.77	4878.32	4819.86	842.08	40°12'38.185"N	104°37'17.093"W	0.37	
12470.00	90.090	354.810	7023.77	5064.32	5008.22	826.50	40°12'40.048"N	104°37'17.270"W	0.50	
12564.00	89.940	354.490	7023.75	5156.64	5101.81	817.73	40°12'40.974"N	104°37'17.371"W	0.38	
12659.00	90.030	355.930	7023.77	5250.11	5196.47	809.80	40°12'41.910"N	104°37'17.461"W	1.52	
12753.00	90.000	359.190	7023.75	5343.20	5290.37	805.80	40°12'42.838"N	104°37'17.501"W	3.47	
12847.00	89.970	0.020	7023.77	5436.71	5384.37	805.15	40°12'43.767"N	104°37'17.497"W	0.88	
12942.00	90.000	358.370	7023.80	5531.13	5479.36	803.81	40°12'44.706"N	104°37'17.502"W	1.74	
13037.00	90.120	0.200	7023.70	5625.57	5574.35	802.63	40°12'45.644"N	104°37'17.506"W	1.93	
13131.00	90.060	1.690	7023.55	5719.27	5668.33	804.18	40°12'46.573"N	104°37'17.474"W	1.59	
13225.00	90.180	3.500	7023.35	5813.15	5762.23	808.44	40°12'47.500"N	104°37'17.407"W	1.93	
13320.00	90.250	3.450	7023.00	5908.09	5857.05	814.19	40°12'48.437"N	104°37'17.320"W	0.09	
13414.00	89.940	3.480	7022.84	6002.03	5950.88	819.87	40°12'49.363"N	104°37'17.235"W	0.33	
13509.00	90.150	2.180	7022.77	6096.92	6045.76	824.56	40°12'50.301"N	104°37'17.163"W	1.39	
13603.00	90.250	359.260	7022.44	6190.59	6139.75	825.75	40°12'51.229"N	104°37'17.135"W	3.11	
13698.00	89.940	356.940	7022.28	6284.79	6234.69	822.60	40°12'52.168"N	104°37'17.164"W	2.46	
13792.00	90.030	356.330	7022.30	6377.67	6328.52	817.08	40°12'53.095"N	104°37'17.223"W	0.66	
13887.00	89.940	355.530	7022.33	6471.35	6423.28	810.34	40°12'54.032"N	104°37'17.298"W	0.85	
13982.00	90.060	356.170	7022.33	6565.01	6518.03	803.46	40°12'54.969"N	104°37'17.374"W	0.69	
14076.00	90.000	356.790	7022.28	6657.85	6611.86	797.69	40°12'55.897"N	104°37'17.437"W	0.66	
14171.00	89.970	358.190	7022.31	6751.92	6706.76	793.53	40°12'56.835"N	104°37'17.478"W	1.47	



Actual Wellpath Report

HURLEY H26-712 AWP



REFERENCE WELLPATH IDENTIFICATION			
Operator	NOBLE ENERGY, INC	Slot	SLOT#38 HURLEY H26-712(2233'FNL&952'FEL,SEC.26)
Area	COLORADO	Well	HURLEY H26-712
Field	WELD COUNTY (NOBLE NAD 83 GRID)	Wellbore	HURLEY H26-712 AWB
Facility	SEC.26-T03N-R65W		

WELLPATH DATA (173 stations)										
MD [ft]	Inclination [°]	Azimuth [°]	TVD [ft]	Vert Sect [ft]	North [ft]	East [ft]	Latitude	Longitude	DLS [°/100ft]	Comments
14265.00	90.000	1.880	7022.33	6845.48	6800.75	793.59	40°12'57.764"N	104°37'17.465"W	3.93	
14359.00	89.910	5.310	7022.40	6939.41	6894.55	799.48	40°12'58.690"N	104°37'17.378"W	3.65	
14454.00	90.060	8.080	7022.43	7034.38	6988.89	810.56	40°12'59.621"N	104°37'17.223"W	2.92	
14548.00	90.030	7.950	7022.35	7128.29	7081.97	823.66	40°13'00.540"N	104°37'17.042"W	0.14	
14643.00	90.030	6.960	7022.31	7223.23	7176.17	835.99	40°13'01.470"N	104°37'16.871"W	1.04	
14737.00	90.060	5.200	7022.23	7317.23	7269.64	845.94	40°13'02.392"N	104°37'16.731"W	1.87	
14832.00	89.970	2.150	7022.21	7412.17	7364.43	852.03	40°13'03.328"N	104°37'16.640"W	3.21	
14927.00	90.090	358.540	7022.16	7506.77	7459.41	852.60	40°13'04.267"N	104°37'16.621"W	3.80	
15021.00	90.000	356.070	7022.08	7599.80	7553.30	848.18	40°13'05.195"N	104°37'16.666"W	2.63	
15116.00	90.090	356.710	7022.01	7693.61	7648.11	842.20	40°13'06.132"N	104°37'16.731"W	0.68	
15210.00	90.000	357.690	7021.93	7786.62	7742.00	837.61	40°13'07.061"N	104°37'16.778"W	1.05	
15304.00	90.180	357.010	7021.79	7879.67	7835.90	833.26	40°13'07.989"N	104°37'16.822"W	0.75	
15399.00	90.060	357.900	7021.59	7973.74	7930.80	829.05	40°13'08.927"N	104°37'16.864"W	0.95	
15494.00	90.030	358.500	7021.51	8067.97	8025.76	826.06	40°13'09.866"N	104°37'16.890"W	0.63	
15588.00	89.850	359.630	7021.61	8161.38	8119.74	824.53	40°13'10.795"N	104°37'16.898"W	1.22	
15682.00	89.970	0.610	7021.76	8254.97	8213.74	824.73	40°13'11.723"N	104°37'16.884"W	1.05	
15777.00	89.910	0.210	7021.86	8349.59	8308.74	825.41	40°13'12.662"N	104°37'16.863"W	0.43	
15871.00	89.970	359.820	7021.96	8443.16	8402.74	825.43	40°13'13.591"N	104°37'16.850"W	0.42	
15966.00	89.970	0.510	7022.01	8537.75	8497.74	825.70	40°13'14.530"N	104°37'16.835"W	0.73	
16060.00	89.940	0.530	7022.08	8631.40	8591.73	826.56	40°13'15.458"N	104°37'16.812"W	0.04	
16155.00	90.090	1.450	7022.06	8726.10	8686.72	828.20	40°13'16.397"N	104°37'16.778"W	0.98	
16243.00	90.220	3.240	7021.82	8813.97	8774.64	831.80	40°13'17.265"N	104°37'16.721"W	2.04	Last BHI MWD Survey
16267.00	90.220	3.240	7021.73	8837.95	8798.60	833.15	40°13'17.502"N	104°37'16.700"W	0.00	Projection to Bit



Actual Wellpath Report

HURLEY H26-712 AWP

Page 8 of 9



REFERENCE WELLPATH IDENTIFICATION			
Operator	NOBLE ENERGY, INC	Slot	SLOT#38 HURLEY H26-712(2233'FNL&952'FEL,SEC.26)
Area	COLORADO	Well	HURLEY H26-712
Field	WELD COUNTY (NOBLE NAD 83 GRID)	Wellbore	HURLEY H26-712 AWB
Facility	SEC.26-T03N-R65W		

HOLE & CASING SECTIONS - Ref Wellbore: HURLEY H26-712 AWB Ref Wellpath: HURLEY H26-712 AWP									
String/Diameter	Start MD [ft]	End MD [ft]	Interval [ft]	Start TVD [ft]	End TVD [ft]	Start N/S [ft]	Start E/W [ft]	End N/S [ft]	End E/W [ft]
13.5in Open Hole	30.00	1935.00	1905.00	30.00	1934.93	0.00	0.00	2.60	-7.99
9.625in Casing Surface	30.00	1935.00	1905.00	30.00	1934.93	0.00	0.00	2.60	-7.99
8.5in Open Hole	1935.00	16243.00	14308.00	1934.93	7021.82	2.60	-7.99	8774.64	831.80

TARGETS								
Name	TVD [ft]	North [ft]	East [ft]	Grid East [US ft]	Grid North [US ft]	Latitude	Longitude	Shape
SECTION 14-T03N-R65W	32.00	-138.91	-3018.62	3241514.12	1315823.44	40°11'49.560"N	104°38'07.476"W	polygon
SECTION 23-T03N-R65W	32.00	-138.91	-3018.62	3241514.12	1315823.44	40°11'49.560"N	104°38'07.476"W	polygon
SECTION 26-T03N-R65W	32.00	-138.91	-3018.62	3241514.12	1315823.44	40°11'49.560"N	104°38'07.476"W	polygon
HURLEY H26-712 Landing Point	7023.00	87.00	864.00	3245396.56	1316049.34	40°11'51.415"N	104°37'17.415"W	point
HURLEY H26-712 REV-1 BHL(1300'FSL&75'FEL,SEC.14)	7023.00	8799.36	845.89	3245378.45	1324761.31	40°13'17.508"N	104°37'16.536"W	point

WELLPATH COMPOSITION - Ref Wellbore: HURLEY H26-712 AWB Ref Wellpath: HURLEY H26-712 AWP				
Start MD [ft]	End MD [ft]	Positional Uncertainty Model	Log Name/Comment	Wellbore
0.00	1931.00	Gyrodata relative depth - Continuous gyro	GYRODATA SURVEYS <85-1931>	HURLEY H26-712 AWB
1931.00	16243.00	OWSG MWD rev2 + IFR1 + Multi-Station Correction	OWSG MWD REV2 + IFR1+MSA <1982-16243'>	HURLEY H26-712 AWB
16243.00	16267.00	Blind Drilling (std)	Projection to bit	HURLEY H26-712 AWB



Actual Wellpath Report

HURLEY H26-712 AWP

Page 9 of 9



REFERENCE WELLPATH IDENTIFICATION			
Operator	NOBLE ENERGY, INC	Slot	SLOT#38 HURLEY H26-712(2233'FNL&952'FEL,SEC.26)
Area	COLORADO	Well	HURLEY H26-712
Field	WELD COUNTY (NOBLE NAD 83 GRID)	Wellbore	HURLEY H26-712 AWB
Facility	SEC.26-T03N-R65W		

WELLPATH COMMENTS				
MD [ft]	Inclination [°]	Azimuth [°]	TVD [ft]	Comment
1931.00	0.950	341.760	1930.93	Tie to Surface
16243.00	90.220	3.240	7021.82	Last BHI MWD Survey
16267.00	90.220	3.240	7021.73	Projection to Bit

COMMENTS
Wellpath general comments SURFACE LOCATION: SENE 40.19740N 104.62460W API: 05-123-46770