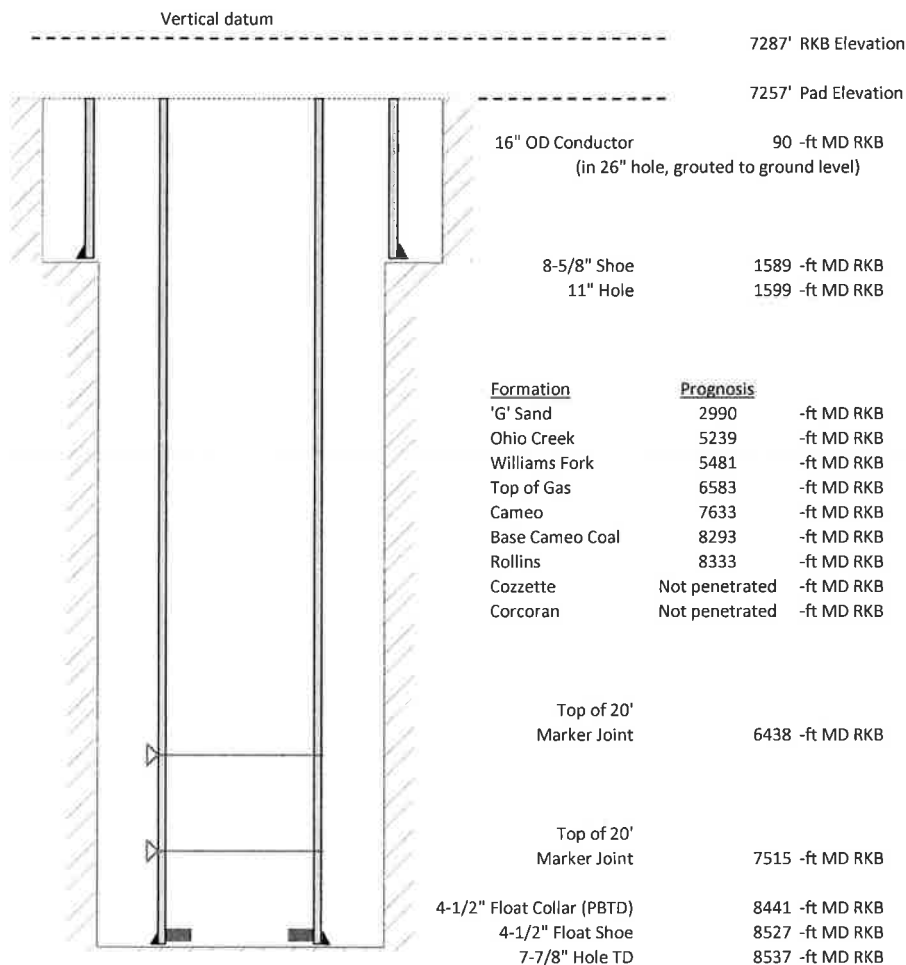


**Laramie Energy, LLC**  
**BCU 0993-21-04E**  
**Slot A-4**  
**H&P 522 (30-ft KB)**

API #: 05-077-10518-00  
 SW/4 NW/4 S13/T9S/R94W/6th PM  
 Mesa County, CO  
 Date of diagram: 10/9/2018



**Cementing details**

8-5/8" 24# Surface Csg	Lead	Tail
Density (ppg)	12.3	12.8
Volume (sx)	172	95
Yield (cf/sx)	2.45	2.18
Top (ft RKB)	0	1030
Bottom (ft RKB)	1030	1589
Returns (full or partial)	Full	Full

4-1/2" 11.6# Prod Csg	Lead	Tail
Density (ppg)	12.5	13.3
Volume (sx)	801	366
Yield (cf/sx)	1.94	1.73
Est Top (ft RKB)	1050	6383
Est Bottom (ft RKB)	6383	8527
Returns (full or partial)	Full	Partial

Displacement
8.3 ppg
130.8 bbls

Other Remarks: 20 bbls cement to surface on surface job. Lost returns last 30 bbls of displacement after slowing rate to 4 bbls/min.