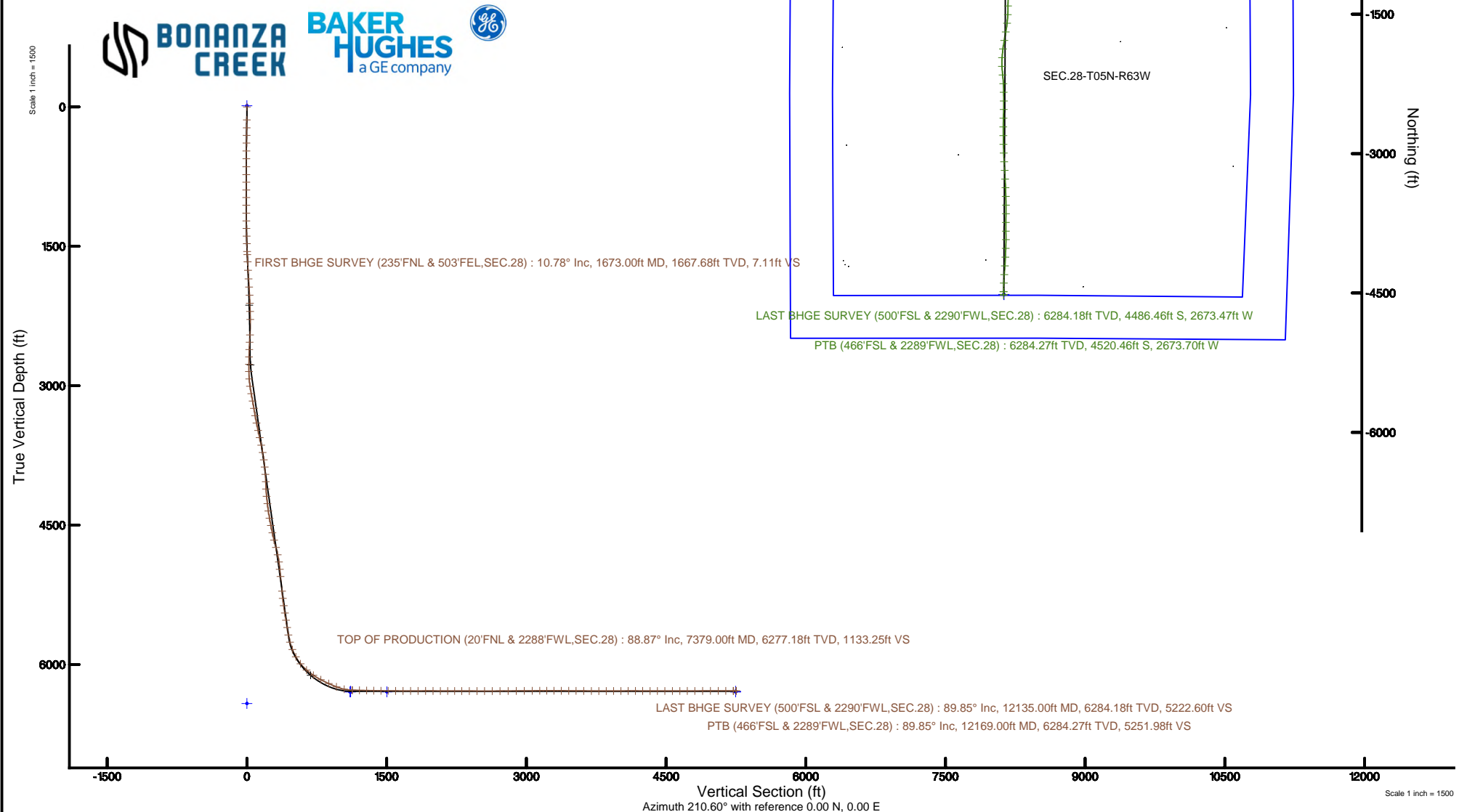


Location:	COLORADO	Slot:	SLOT#01 NORTH PLATTE K21-O24-28HNB (271°FNL & 428°FEL, SEC.28)
Field:	WELD COUNTY	Well:	NORTH PLATTE K21-O24-28HNB
Facility:	SEC.28-T05N-R63W	Wellbore:	NORTH PLATTE K21-O24-28HNB PWB
<b>Plot reference wellpath is NORTH PLATTE K21-O24-28HNB (REV-C.0) PWP</b>		Grid System: NAD83 / Lambert Colorado SP, Northern Zone (501), US feet	
True vertical depths are referenced to RIG (17KB) (RKB)		North Reference: True north	
Measured depths are referenced to RIG (17KB) (RKB)		Scale: True distance	
RIG (17KB) (RKB) to Mean Sea Level: 4565 feet		Depths are in feet	
Mean Sea Level to Ground level (At Slot: SLOT#01 NORTH PLATTE K21-O24-28HNB (271°FNL & 428°FEL, SEC.28)): 0 feet		Created by: bushjpmh on 2018-12-12	
Coordinates are in feet referenced to Slot		Database: Denver	





# Actual Wellpath Report

NORTH PLATTE K21-O24-28HNB AWP

Page 1 of 8



REFERENCE WELLPATH IDENTIFICATION			
Operator	BONANZA CREEK OIL COMPANY	Slot	SLOT#01 NORTH PLATTE K21-O24-28HNB (271'FNL & 428'FEL, SEC.28)
Area	COLORADO	Well	NORTH PLATTE K21-O24-28HNB
Field	WELD COUNTY	Wellbore	NORTH PLATTE K21-O24-28HNB AWB
Facility	SEC.28-T05N-R63W		

REPORT SETUP INFORMATION			
Projection System	NAD83 / Lambert Colorado SP, Northern Zone (501), US feet	Software System	WellArchitect® 5.1
North Reference	True	User	Bushjamh
Scale	0.999959	Report Generated	12/12/2018 at 7:56:40 AM
Convergence at slot	0.69° East	Database/Source file	Denver/NORTH_PLATTE_K21-O24-28HNB_AWP.xml

WELLPATH LOCATION						
	Local coordinates		Grid coordinates		Geographic coordinates	
	North[ft]	East[ft]	Easting[US ft]	Northing[US ft]	Latitude	Longitude
Slot Location	1492.69	2462.67	3297358.79	1381955.91	40°22'37.049"N	104°25'57.580"W
Facility Reference Pt			3294914.22	1380434.00	40°22'22.300"N	104°26'29.400"W
Field Reference Pt			3224525.77	1254425.87	40°01'44.400"N	104°41'53.556"W

WELLPATH DATUM			
Calculation method	Minimum curvature	RIG (17'KB) (RKB) to Installation Vertical Datum	4565.00ft
Horizontal Reference Pt	Slot	RIG (17'KB) (RKB) to Mean Sea Level	4565.00ft
Vertical Reference Pt	RIG (17'KB) (RKB)	RIG (17'KB) (RKB) to Ground Level at Slot (SLOT#01 NORTH PLATTE K21-O24-28HNB (271'FNL & 428'FEL, SEC.28))	4565.00ft
MD Reference Pt	RIG (17'KB) (RKB)	Section Origin	N 0.00, E 0.00 ft
Field Vertical Reference	Mean Sea Level	Section Azimuth	210.60°



# Actual Wellpath Report

NORTH PLATTE K21-O24-28HNB AWP

Page 2 of 8



## REFERENCE WELLPATH IDENTIFICATION

Operator	BONANZA CREEK OIL COMPANY	Slot	SLOT#01 NORTH PLATTE K21-O24-28HNB (271'FNL & 428'FEL, SEC.28)
Area	COLORADO	Well	NORTH PLATTE K21-O24-28HNB
Field	WELD COUNTY	Wellbore	NORTH PLATTE K21-O24-28HNB AWB
Facility	SEC.28-T05N-R63W		

## WELLPATH DATA (133 stations)

MD [ft]	Inclination [°]	Azimuth [°]	TVD [ft]	Vert Sect [ft]	North [ft]	East [ft]	Latitude	Longitude	DLS [°/100ft]	Comments
0.00	0.000	56.500	0.00	0.00	0.00	0.00	40°22'37.049"N	104°25'57.580"W	0.00	
140.01	1.300	56.500	140.00	-1.43	0.88	1.32	40°22'37.058"N	104°25'57.563"W	0.93	
225.01	0.800	21.400	224.98	-2.88	1.96	2.35	40°22'37.068"N	104°25'57.550"W	0.93	
307.01	0.700	41.100	306.98	-3.94	2.87	2.88	40°22'37.077"N	104°25'57.543"W	0.34	
389.01	1.000	39.600	388.97	-5.14	3.80	3.67	40°22'37.087"N	104°25'57.533"W	0.37	
474.01	0.300	11.400	473.96	-6.08	4.59	4.19	40°22'37.094"N	104°25'57.526"W	0.88	
558.01	0.400	324.400	557.96	-6.41	5.04	4.06	40°22'37.099"N	104°25'57.528"W	0.35	
644.01	0.500	323.300	643.96	-6.67	5.59	3.66	40°22'37.104"N	104°25'57.533"W	0.12	
729.01	0.600	307.600	728.95	-6.87	6.16	3.08	40°22'37.110"N	104°25'57.540"W	0.21	
811.01	0.600	292.700	810.95	-6.86	6.59	2.35	40°22'37.114"N	104°25'57.550"W	0.19	
894.01	1.200	307.500	893.94	-6.91	7.28	1.26	40°22'37.121"N	104°25'57.564"W	0.77	
976.01	2.000	308.900	975.91	-7.22	8.70	-0.54	40°22'37.135"N	104°25'57.587"W	0.98	
1058.01	3.000	296.600	1057.83	-7.27	10.56	-3.57	40°22'37.153"N	104°25'57.626"W	1.38	
1143.01	4.200	296.700	1142.66	-6.91	12.96	-8.34	40°22'37.177"N	104°25'57.688"W	1.41	
1227.01	5.500	295.200	1226.36	-6.32	16.05	-14.73	40°22'37.208"N	104°25'57.770"W	1.55	
1309.01	6.500	291.800	1307.91	-5.24	19.45	-22.59	40°22'37.241"N	104°25'57.872"W	1.29	
1392.01	7.500	289.600	1390.29	-3.49	23.01	-32.06	40°22'37.276"N	104°25'57.994"W	1.25	
1474.01	8.000	286.700	1471.54	-1.09	26.45	-42.57	40°22'37.310"N	104°25'58.130"W	0.77	
1559.01	9.500	286.100	1555.55	2.09	30.09	-54.97	40°22'37.346"N	104°25'58.290"W	1.77	
1593.01	10.300	285.800	1589.04	3.57	31.70	-60.59	40°22'37.362"N	104°25'58.363"W	2.36	
1673.00	10.780	287.320	1667.68	7.11	35.87	-74.62	40°22'37.403"N	104°25'58.544"W	0.69	FIRST BHGE SURVEY (235'FNL & 503'FEL, SEC.28)
1766.00	13.550	286.370	1758.58	11.79	41.53	-93.38	40°22'37.459"N	104°25'58.786"W	2.99	
1861.00	16.060	287.730	1850.42	17.46	48.67	-116.57	40°22'37.530"N	104°25'59.086"W	2.67	
1954.00	18.920	290.620	1939.12	22.94	57.90	-142.94	40°22'37.621"N	104°25'59.427"W	3.21	
2046.00	20.670	293.140	2025.68	27.63	69.54	-171.84	40°22'37.736"N	104°25'59.800"W	2.12	
2140.00	21.380	295.240	2113.42	31.39	83.36	-202.59	40°22'37.873"N	104°26'00.198"W	1.10	
2234.00	22.490	296.690	2200.61	34.22	98.75	-234.15	40°22'38.025"N	104°26'00.606"W	1.31	
2329.00	25.470	299.000	2287.41	36.03	116.81	-268.26	40°22'38.203"N	104°26'01.046"W	3.29	
2518.00	31.530	305.510	2453.47	32.94	165.28	-344.12	40°22'38.682"N	104°26'02.026"W	3.60	
2611.00	32.480	305.800	2532.33	28.60	194.01	-384.17	40°22'38.966"N	104°26'02.544"W	1.03	



# Actual Wellpath Report

NORTH PLATTE K21-O24-28HNB AWP

Page 3 of 8



## REFERENCE WELLPATH IDENTIFICATION

Operator	BONANZA CREEK OIL COMPANY	Slot	SLOT#01 NORTH PLATTE K21-O24-28HNB (271'FNL & 428'FEL, SEC.28)
Area	COLORADO	Well	NORTH PLATTE K21-O24-28HNB
Field	WELD COUNTY	Wellbore	NORTH PLATTE K21-O24-28HNB AWB
Facility	SEC.28-T05N-R63W		

## WELLPATH DATA (133 stations)

MD [ft]	Inclination [°]	Azimuth [°]	TVD [ft]	Vert Sect [ft]	North [ft]	East [ft]	Latitude	Longitude	DLS [°/100ft]	Comments
2704.00	31.990	304.180	2611.00	24.80	222.46	-424.80	40°22'39.247"N	104°26'03.069"W	1.07	
2797.00	31.930	302.190	2689.90	22.59	249.40	-466.00	40°22'39.513"N	104°26'03.601"W	1.13	
2891.00	31.820	301.370	2769.73	21.57	275.54	-508.19	40°22'39.772"N	104°26'04.146"W	0.48	
2983.00	31.830	299.830	2847.90	21.57	300.23	-549.95	40°22'40.016"N	104°26'04.686"W	0.88	
3077.00	32.130	294.330	2927.65	24.64	322.87	-594.24	40°22'40.239"N	104°26'05.258"W	3.11	
3170.00	32.000	287.070	3006.49	33.11	340.30	-640.34	40°22'40.412"N	104°26'05.854"W	4.14	
3264.00	32.180	282.690	3086.14	46.64	353.11	-688.58	40°22'40.538"N	104°26'06.477"W	2.48	
3358.00	32.430	284.850	3165.59	61.18	365.07	-737.36	40°22'40.656"N	104°26'07.108"W	1.26	
3451.00	32.330	285.040	3244.13	74.63	377.91	-785.48	40°22'40.783"N	104°26'07.729"W	0.15	
3544.00	32.480	284.860	3322.65	88.08	390.77	-833.64	40°22'40.910"N	104°26'08.352"W	0.19	
3638.00	32.510	281.900	3401.94	103.03	402.45	-882.75	40°22'41.026"N	104°26'08.986"W	1.69	
3732.00	32.360	280.760	3481.28	119.67	412.36	-932.18	40°22'41.124"N	104°26'09.625"W	0.67	
3825.00	32.440	281.000	3559.80	136.48	421.76	-981.12	40°22'41.217"N	104°26'10.257"W	0.16	
3920.00	32.440	281.540	3639.97	153.36	431.72	-1031.09	40°22'41.315"N	104°26'10.903"W	0.30	
4014.00	32.580	284.830	3719.25	168.47	443.24	-1080.27	40°22'41.429"N	104°26'11.538"W	1.89	
4107.00	32.510	288.320	3797.65	180.60	457.51	-1128.20	40°22'41.570"N	104°26'12.158"W	2.02	
4200.00	32.630	290.700	3876.03	190.23	474.23	-1175.38	40°22'41.735"N	104°26'12.767"W	1.38	
4293.00	32.510	293.280	3954.41	197.73	492.97	-1221.79	40°22'41.920"N	104°26'13.367"W	1.50	
4387.00	32.710	297.930	4033.60	202.13	514.85	-1267.45	40°22'42.136"N	104°26'13.957"W	2.67	
4480.00	32.790	295.870	4111.82	205.38	537.61	-1312.31	40°22'42.361"N	104°26'14.537"W	1.20	
4574.00	32.570	291.410	4190.95	211.53	557.95	-1358.77	40°22'42.562"N	104°26'15.137"W	2.57	
4667.00	32.460	290.100	4269.38	220.08	575.67	-1405.51	40°22'42.737"N	104°26'15.741"W	0.77	
4760.00	32.500	288.120	4347.83	230.03	592.02	-1452.70	40°22'42.899"N	104°26'16.351"W	1.14	
4853.00	32.690	284.420	4426.19	242.43	606.04	-1500.77	40°22'43.037"N	104°26'16.972"W	2.15	
4947.00	32.710	282.820	4505.30	257.27	618.00	-1550.12	40°22'43.155"N	104°26'17.610"W	0.92	
5040.00	32.880	281.790	4583.47	273.08	628.73	-1599.34	40°22'43.261"N	104°26'18.245"W	0.63	
5134.00	32.970	277.740	4662.38	291.25	637.39	-1649.66	40°22'43.347"N	104°26'18.896"W	2.34	
5228.00	32.980	276.900	4741.24	311.48	643.91	-1700.41	40°22'43.411"N	104°26'19.551"W	0.49	
5321.00	32.740	281.200	4819.37	330.01	651.84	-1750.21	40°22'43.490"N	104°26'20.195"W	2.52	
5414.00	32.710	288.610	4897.64	343.59	664.75	-1798.72	40°22'43.617"N	104°26'20.822"W	4.31	



# Actual Wellpath Report

NORTH PLATTE K21-O24-28HNB AWP

Page 4 of 8



## REFERENCE WELLPATH IDENTIFICATION

Operator	BONANZA CREEK OIL COMPANY	Slot	SLOT#01 NORTH PLATTE K21-O24-28HNB (271'FNL & 428'FEL, SEC.28)
Area	COLORADO	Well	NORTH PLATTE K21-O24-28HNB
Field	WELD COUNTY	Wellbore	NORTH PLATTE K21-O24-28HNB AWB
Facility	SEC.28-T05N-R63W		

## WELLPATH DATA (133 stations) † = interpolated/extrapolated station

MD [ft]	Inclination [°]	Azimuth [°]	TVD [ft]	Vert Sect [ft]	North [ft]	East [ft]	Latitude	Longitude	DLS [°/100ft]	Comments
5508.00	32.630	291.910	4976.78	352.70	682.31	-1846.30	40°22'43.791"N	104°26'21.437"W	1.90	
5600.00	32.750	291.030	5054.21	360.59	700.50	-1892.54	40°22'43.970"N	104°26'22.034"W	0.53	
5789.00	34.270	292.420	5211.79	376.67	739.14	-1989.46	40°22'44.352"N	104°26'23.286"W	0.90	
5882.00	32.700	290.260	5289.36	384.91	757.83	-2037.23	40°22'44.537"N	104°26'23.904"W	2.12	
5975.00	32.720	287.560	5367.61	395.09	774.11	-2084.77	40°22'44.698"N	104°26'24.518"W	1.57	
6068.00	32.630	285.950	5445.90	407.11	788.58	-2132.84	40°22'44.841"N	104°26'25.139"W	0.94	
6161.00	32.650	286.880	5524.21	419.41	802.76	-2180.95	40°22'44.981"N	104°26'25.761"W	0.54	
6254.00	32.770	285.920	5602.46	431.74	816.95	-2229.16	40°22'45.121"N	104°26'26.384"W	0.57	
6349.00	32.460	284.930	5682.48	445.14	830.57	-2278.52	40°22'45.255"N	104°26'27.022"W	0.65	
6441.00	31.920	275.490	5760.39	462.15	839.26	-2326.62	40°22'45.341"N	104°26'27.643"W	5.49	
6534.00	31.720	261.540	5839.52	488.03	838.01	-2375.34	40°22'45.329"N	104°26'28.273"W	7.90	
6626.00	32.040	239.000	5917.92	524.87	821.83	-2420.34	40°22'45.169"N	104°26'28.854"W	12.88	
6719.00	39.850	223.730	5993.31	575.77	787.47	-2462.23	40°22'44.829"N	104°26'29.395"W	12.73	
6813.00	48.870	215.430	6060.50	640.56	736.71	-2503.69	40°22'44.328"N	104°26'29.931"W	11.39	
6905.00	56.110	212.140	6116.49	713.37	676.06	-2544.15	40°22'43.728"N	104°26'30.454"W	8.36	
6999.00	62.170	208.740	6164.70	794.00	606.50	-2584.94	40°22'43.041"N	104°26'30.981"W	7.15	
7093.00	65.820	201.600	6205.95	878.01	530.08	-2620.76	40°22'42.286"N	104°26'31.443"W	7.85	
7186.00	69.570	192.700	6241.30	961.54	447.96	-2646.01	40°22'41.474"N	104°26'31.770"W	9.73	
7279.00	78.600	186.090	6266.80	1044.74	359.86	-2660.47	40°22'40.604"N	104°26'31.956"W	11.87	
7373.00	88.860	181.570	6277.06	1128.01	266.77	-2666.66	40°22'39.684"N	104°26'32.036"W	11.91	
7379.00†	88.868	181.319	6277.18	1133.25	260.78	-2666.82	40°22'39.624"N	104°26'32.038"W	4.19	TOP OF PRODUCTION (20'FNL & 2288'FWL,SEC.28)
7467.00	88.980	177.630	6278.83	1208.55	172.81	-2666.01	40°22'38.755"N	104°26'32.028"W	4.19	
7560.00	88.740	175.890	6280.68	1285.77	79.98	-2660.75	40°22'37.838"N	104°26'31.960"W	1.89	
7653.00	89.170	175.470	6282.38	1362.01	-12.74	-2653.75	40°22'36.922"N	104°26'31.869"W	0.65	
7747.00	89.480	176.530	6283.48	1439.37	-106.50	-2647.19	40°22'35.995"N	104°26'31.784"W	1.17	
7840.00	89.630	177.470	6284.21	1516.83	-199.37	-2642.33	40°22'35.077"N	104°26'31.721"W	1.02	
7934.00	89.690	178.300	6284.76	1595.91	-293.30	-2638.86	40°22'34.149"N	104°26'31.676"W	0.89	
8028.00	89.970	180.200	6285.04	1676.18	-387.29	-2637.63	40°22'33.221"N	104°26'31.660"W	2.04	
8122.00	90.000	181.270	6285.07	1757.69	-481.28	-2638.83	40°22'32.292"N	104°26'31.676"W	1.14	
8213.00	89.970	181.710	6285.09	1837.19	-572.25	-2641.20	40°22'31.393"N	104°26'31.706"W	0.48	



# Actual Wellpath Report

NORTH PLATTE K21-O24-28HNB AWP

Page 5 of 8



## REFERENCE WELLPATH IDENTIFICATION

Operator	BONANZA CREEK OIL COMPANY	Slot	SLOT#01 NORTH PLATTE K21-O24-28HNB (271'FNL & 428'FEL, SEC.28)
Area	COLORADO	Well	NORTH PLATTE K21-O24-28HNB
Field	WELD COUNTY	Wellbore	NORTH PLATTE K21-O24-28HNB AWB
Facility	SEC.28-T05N-R63W		

## WELLPATH DATA (133 stations)

MD [ft]	Inclination [°]	Azimuth [°]	TVD [ft]	Vert Sect [ft]	North [ft]	East [ft]	Latitude	Longitude	DLS [°/100ft]	Comments
8306.00	90.280	181.020	6284.89	1918.34	-665.22	-2643.41	40°22'30.474"N	104°26'31.735"W	0.81	
8399.00	89.690	179.740	6284.91	1998.70	-758.22	-2644.03	40°22'29.555"N	104°26'31.742"W	1.52	
8492.00	89.780	176.580	6285.34	2077.17	-851.16	-2641.05	40°22'28.637"N	104°26'31.704"W	3.40	
8587.00	89.880	175.050	6285.63	2155.19	-945.90	-2634.11	40°22'27.701"N	104°26'31.614"W	1.61	
8680.00	89.880	174.650	6285.82	2230.66	-1038.53	-2625.76	40°22'26.785"N	104°26'31.506"W	0.43	
8773.00	89.880	177.240	6286.01	2307.15	-1131.29	-2619.19	40°22'25.869"N	104°26'31.421"W	2.78	
8867.00	90.000	182.540	6286.11	2387.94	-1225.25	-2619.01	40°22'24.940"N	104°26'31.418"W	5.64	
8960.00	89.880	183.500	6286.21	2470.36	-1318.12	-2623.91	40°22'24.022"N	104°26'31.482"W	1.04	
9053.00	89.850	179.740	6286.43	2551.70	-1411.07	-2626.54	40°22'23.104"N	104°26'31.515"W	4.04	
9147.00	90.220	182.350	6286.37	2633.46	-1505.04	-2628.25	40°22'22.175"N	104°26'31.537"W	2.80	
9240.00	90.220	187.740	6286.02	2717.33	-1597.65	-2636.43	40°22'21.260"N	104°26'31.643"W	5.80	
9334.00	90.430	189.410	6285.48	2804.46	-1690.59	-2650.44	40°22'20.342"N	104°26'31.824"W	1.79	
9427.00	90.310	190.230	6284.88	2891.40	-1782.23	-2666.30	40°22'19.436"N	104°26'32.029"W	0.89	
9520.00	90.280	187.070	6284.40	2977.65	-1874.16	-2680.29	40°22'18.528"N	104°26'32.209"W	3.40	
9614.00	90.520	184.760	6283.75	3063.05	-1967.65	-2689.97	40°22'17.604"N	104°26'32.334"W	2.47	
9707.00	90.460	176.800	6282.95	3143.66	-2060.56	-2691.24	40°22'16.686"N	104°26'32.350"W	8.56	
9800.00	89.750	173.860	6282.78	3219.58	-2153.24	-2683.67	40°22'15.770"N	104°26'32.253"W	3.25	
9894.00	89.850	177.010	6283.11	3296.41	-2246.93	-2676.19	40°22'14.844"N	104°26'32.156"W	3.35	
9987.00	89.750	179.190	6283.43	3374.83	-2339.87	-2673.10	40°22'13.926"N	104°26'32.116"W	2.35	
10081.00	89.750	179.030	6283.84	3454.99	-2433.86	-2671.64	40°22'12.997"N	104°26'32.097"W	0.17	
10172.00	89.690	181.810	6284.29	3533.64	-2524.85	-2672.31	40°22'12.098"N	104°26'32.105"W	3.06	
10266.00	89.690	181.860	6284.80	3616.03	-2618.80	-2675.32	40°22'11.169"N	104°26'32.144"W	0.05	
10360.00	89.690	180.300	6285.30	3697.82	-2712.78	-2677.09	40°22'10.241"N	104°26'32.167"W	1.66	
10454.00	89.660	178.700	6285.84	3778.31	-2806.77	-2676.27	40°22'09.312"N	104°26'32.156"W	1.70	
10547.00	90.180	179.420	6285.97	3857.56	-2899.76	-2674.75	40°22'08.393"N	104°26'32.136"W	0.95	
10641.00	90.180	177.600	6285.67	3937.19	-2993.72	-2672.30	40°22'07.465"N	104°26'32.105"W	1.94	
10735.00	90.280	176.280	6285.29	4015.43	-3087.58	-2667.28	40°22'06.537"N	104°26'32.040"W	1.41	
10828.00	90.250	176.980	6284.86	4092.55	-3180.42	-2661.82	40°22'05.620"N	104°26'31.969"W	0.75	
10922.00	89.780	177.380	6284.84	4171.00	-3274.31	-2657.19	40°22'04.692"N	104°26'31.909"W	0.66	
11015.00	89.880	177.650	6285.12	4248.92	-3367.22	-2653.16	40°22'03.774"N	104°26'31.857"W	0.31	





# Actual Wellpath Report

NORTH PLATTE K21-O24-28HNB AWP

Page 6 of 8



REFERENCE WELLPATH IDENTIFICATION			
Operator	BONANZA CREEK OIL COMPANY	Slot	SLOT#01 NORTH PLATTE K21-O24-28HNB (271'FNL & 428'FEL, SEC.28)
Area	COLORADO	Well	NORTH PLATTE K21-O24-28HNB
Field	WELD COUNTY	Wellbore	NORTH PLATTE K21-O24-28HNB AWB
Facility	SEC.28-T05N-R63W		

WELLPATH DATA (133 stations)										
MD [ft]	Inclination [°]	Azimuth [°]	TVD [ft]	Vert Sect [ft]	North [ft]	East [ft]	Latitude	Longitude	DLS [°/100ft]	Comments
11109.00	89.850	178.430	6285.34	4328.14	-3461.16	-2649.95	40°22'02.845"N	104°26'31.815"W	0.83	
11202.00	90.120	179.570	6285.36	4407.35	-3554.15	-2648.32	40°22'01.927"N	104°26'31.794"W	1.26	
11295.00	89.850	180.630	6285.39	4487.47	-3647.14	-2648.48	40°22'01.008"N	104°26'31.796"W	1.18	
11388.00	90.000	180.600	6285.51	4568.02	-3740.14	-2649.48	40°22'00.089"N	104°26'31.809"W	0.16	
11482.00	90.250	179.080	6285.30	4648.79	-3834.14	-2649.22	40°21'59.160"N	104°26'31.805"W	1.64	
11574.00	89.780	180.120	6285.28	4727.64	-3926.13	-2648.58	40°21'58.251"N	104°26'31.797"W	1.24	
11667.00	90.180	182.280	6285.31	4808.66	-4019.11	-2650.53	40°21'57.332"N	104°26'31.822"W	2.36	
11762.00	90.400	182.530	6284.83	4892.38	-4114.02	-2654.51	40°21'56.394"N	104°26'31.873"W	0.35	
11856.00	90.120	184.020	6284.40	4975.89	-4207.86	-2659.88	40°21'55.467"N	104°26'31.942"W	1.61	
11950.00	90.150	184.110	6284.18	5059.98	-4301.63	-2666.55	40°21'54.540"N	104°26'32.028"W	0.10	
12042.00	90.000	182.050	6284.06	5141.56	-4393.49	-2671.49	40°21'53.632"N	104°26'32.092"W	2.25	
12135.00	89.850	180.390	6284.18	5222.60	-4486.46	-2673.47	40°21'52.714"N	104°26'32.118"W	1.79	LAST BHGE SURVEY (500'FSL & 2290'FWL, SEC.28)
12169.00	89.850	180.390	6284.27	5251.98	-4520.46	-2673.70	40°21'52.378"N	104°26'32.120"W	0.00	PTB (466'FSL & 2289'FWL, SEC.28)



# Actual Wellpath Report

## NORTH PLATTE K21-O24-28HNB AWP

Page 7 of 8



REFERENCE WELLPATH IDENTIFICATION			
Operator	BONANZA CREEK OIL COMPANY	Slot	SLOT#01 NORTH PLATTE K21-O24-28HNB (271'FNL & 428'FEL, SEC.28)
Area	COLORADO	Well	NORTH PLATTE K21-O24-28HNB
Field	WELD COUNTY	Wellbore	NORTH PLATTE K21-O24-28HNB AWB
Facility	SEC.28-T05N-R63W		

TARGETS								
Name	TVD [ft]	North [ft]	East [ft]	Grid East [US ft]	Grid North [US ft]	Latitude	Longitude	Shape
SEC.28-T05N-R63W	-13.00	0.00	0.00	3297358.79	1381955.91	40°22'37.049"N	104°25'57.580"W	polygon
NORTH PLATTE K21-O24-28HNB BHL REV-2 (470'FSL & 2292'FWL, SEC.28)	6289.00	-4516.19	-2671.34	3294742.11	1377408.09	40°21'52.420"N	104°26'32.090"W	point
NORTH PLATTE K21-O24-28HNB LP REV-3 (10'FNL & 2308'FWL, SEC.28)	6289.00	271.45	-2646.83	3294709.00	1382195.47	40°22'39.730"N	104°26'31.780"W	point
NORTH PLATTE K21-O24-28HNB BHL (470'FSL & 2292'FWL, SEC.28)	6295.00	-4517.75	-2668.75	3294744.72	1377406.56	40°21'52.405"N	104°26'32.057"W	point
NORTH PLATTE K21-O24-28HNB BHL REV-1 (470'FSL & 2292'FWL, SEC.28)	6295.00	-4516.19	-2671.34	3294742.11	1377408.09	40°21'52.420"N	104°26'32.090"W	point
NORTH PLATTE K21-O24-28HNB LP (470'FNL & 2308'FWL, SEC.28)	6295.00	-180.40	-2646.57	3294714.70	1381743.68	40°22'35.265"N	104°26'31.776"W	point
NORTH PLATTE K21-O24-28HNB LP REV-1 (10'FNL & 2308'FWL, SEC.28)	6295.00	280.40	-2646.57	3294709.15	1382204.43	40°22'39.818"N	104°26'31.777"W	point
NORTH PLATTE K21-O24-28HNB LP REV-2 (10'FNL & 2308'FWL, SEC.28)	6295.00	271.45	-2646.83	3294709.00	1382195.47	40°22'39.730"N	104°26'31.780"W	point
SEC.28-T05N-R63W 460'SETBACKS	6420.00	0.00	0.00	3297358.79	1381955.91	40°22'37.049"N	104°25'57.580"W	polygon

WELLPATH COMPOSITION - Ref Wellbore: NORTH PLATTE K21-O24-28HNB AWB    Ref Wellpath: NORTH PLATTE K21-O24-28HNB AWP				
Start MD [ft]	End MD [ft]	Positional Uncertainty Model	Log Name/Comment	Wellbore
0.00	1593.01	ISCWSA MWD, Rev. 4 (Standard)	3RD PARTY SURFACE SURVEYS <136-1589>	NORTH PLATTE K21-O24-28HNB AWB
1593.01	12135.00	BHI AutoTrak Curve (Axial Corr, Short spacing)	BHI AUTOTRAK CURVE (AXIAL CORR, SHORT SPACING) <1673-12135>	NORTH PLATTE K21-O24-28HNB AWB
12135.00	12169.00	Blind Drilling (std)	Projection to bit	NORTH PLATTE K21-O24-28HNB AWB





Actual Wellpath Report  
NORTH PLATTE K21-O24-28HNB AWP  
Page 8 of 8



REFERENCE WELLPATH IDENTIFICATION			
Operator	BONANZA CREEK OIL COMPANY	Slot	SLOT#01 NORTH PLATTE K21-O24-28HNB (271'FNL & 428'FEL, SEC.28)
Area	COLORADO	Well	NORTH PLATTE K21-O24-28HNB
Field	WELD COUNTY	Wellbore	NORTH PLATTE K21-O24-28HNB AWB
Facility	SEC.28-T05N-R63W		

WELLPATH COMMENTS				
MD [ft]	Inclination [°]	Azimuth [°]	TVD [ft]	Comment
1673.00	10.780	287.320	1667.68	FIRST BHGE SURVEY (235'FNL & 503'FEL,SEC.28)
7379.00	88.868	181.319	6277.18	TOP OF PRODUCTION (20'FNL & 2288'FWL,SEC.28)
12135.00	89.850	180.390	6284.18	LAST BHGE SURVEY (500'FSL & 2290'FWL,SEC.28)
12169.00	89.850	180.390	6284.27	PTB (466'FSL & 2289'FWL,SEC.28)