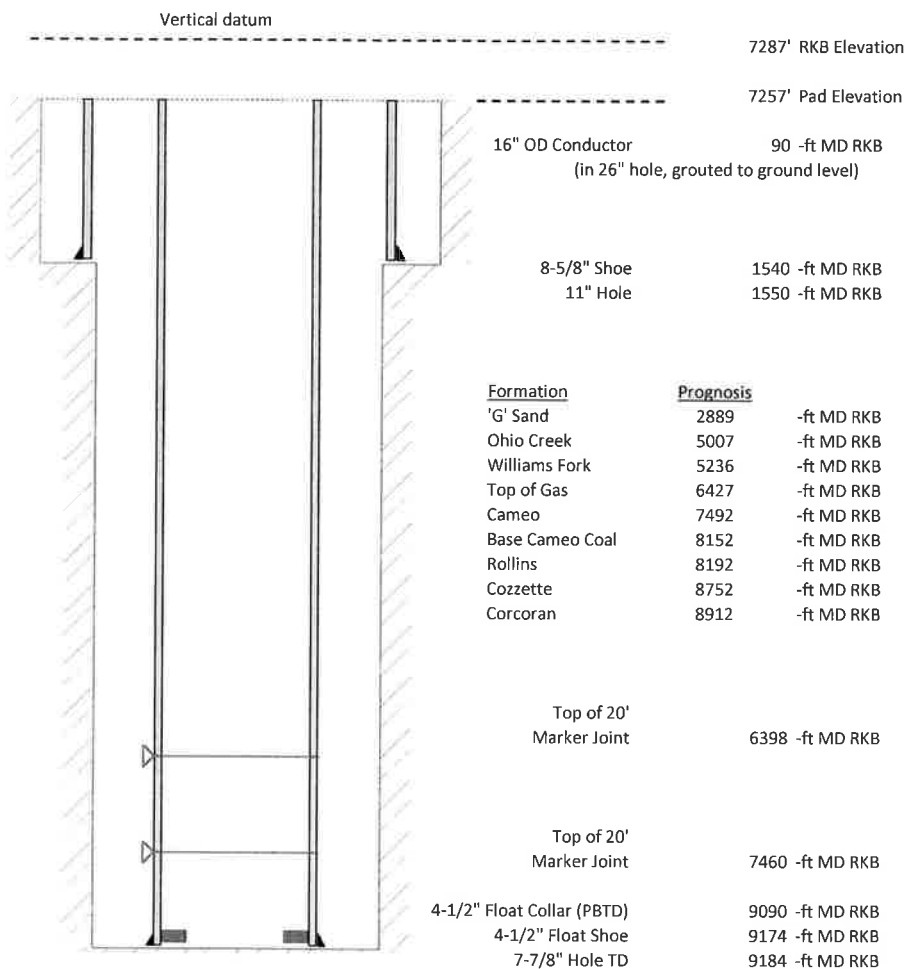


Laramie Energy, LLC  
 BCU 0993-21-06E  
 Slot A-6  
 H&P 522 (30-ft KB)

API #: 05-077-10519-00  
 SW/4 NW/4 S13/T9S/R94W/6th PM  
 Mesa County, CO  
 Date of diagram: 9/23/2018



**Cementing details**

8-5/8" 24# Surface Csg	Lead	Tail
Density (ppg)	12.3	12.8
Volume (sx)	171	94
Yield (cf/sx)	2.45	2.18
Top (ft RKB)	0	750
Bottom (ft RKB)	750	1540
Returns (full or partial)	Full	Full

4-1/2" 11.6# Prod Csg	Lead	Tail
Density (ppg)	12.5	13.3
Volume (sx)	784	496
Yield (cf/sx)	1.94	1.73
Est Top (ft RKB)	1030	6227
Est Bottom (ft RKB)	6227	9174
Returns (full or partial)	Full	Full

Displacement
8.3 ppg
141 bbls

Other Remarks: 20 bbls cement back on surface job. Production-40 bbls  
 spacer to surface