

©"4239"Dcmgt"Jwijgu."c"IG"eqorcp{"NNE"ó"Cnn"tkijvu"tgugtxgf0"Dcmgt"Jwijgu."c"IG"eqorcp{"NNE"cpf"kvu"chhknkcvgu"~DJIGö+"rtqkfgu"vjku"kphqtocvkqp"qp"cp"ôcu"kuö"dcuku"hqt"igpgtcn"kphqtocvkqp" purposes and believes it to be accurate as of the date of publication. BHGE does not make any representation as to the accuracy or completeness of the information and makes no warranties of any kind, specific, implied or oral, to the fullest extent permissible by law, including those of merchantability and fitness for a particular purpose or use. BHGE hereby disclaims any and all liability for any direct, indirect, consequential or special damages, claims for lost profits, or third party claims arising from the use of the information, whether a claim is asserted in contract, tort, or otherwise. The BHGE logo is a trademark of Baker Hughes, a GE company, LLC. GE and the GE monogram are trademarks of General Electric Company used under trademark license.

Crew								
Name	Arrive Wellsite	Depart Wellsite	Name	Arrive Wellsite	Depart Wellsite	Name	Arrive Wellsite	Depart Wellsite
James Himes	2018-06-26	2018-06-29						

Mud Properties Record											
Date / Time	Run No.	Measured Depth (ft)	Mud Type	Density (ppg)	Viscosity (cP)	pH	Fluid Loss (cm3)	Oil / Water	Source	Total Chlorides (ppm)	K+ (%)
2018-06-25 13:00	1	1959.00	Oil Based Mud	9.6	13	N/A	21.4	84.1/15.9	Active Pit	23000	0.00
2018-06-26 03:00	1	2380.36	Oil Based Mud	8.8	13	N/A	19.6	80.3/19.7	Active Pit	22000	0.00
2018-06-26 14:00	1	6079.38	Oil Based Mud	9.4	12	N/A	21.0	81.1/18.9	Active Pit	23700	0.00
2018-06-27 03:00	1	9263.06	Oil Based Mud	9.5	12	N/A	24.2	82/18	Active Pit	27000	0.00
2018-06-27 14:00	1	12414.31	Oil Based Mud	9.7	13	N/A	22.4	82.8/17.2	Active Pit	26500	0.00

2018-06-28 03:00	1	15592.87	Oil Based Mud	9.6	13	N/A	20.8	81.7/18.3	Active Pit	26000	0.00
2018-06-29 04:00	1	17400.00	Oil Based Mud	9.8	13	N/A	20.0	82.3/17.7	Active Pit	25000	0.00

Equipment and Service Data

Run No.	Tool	Serial Number	Measurement	Sensor Offset (ft)	Bit Offset (ft)	Max O.D. (in)	Min I.D. (in)
1	ATC_SU	14192926	Near Bit VSS	5.93	6.76	7.000	2.250
1	ATC_SU	14192926	Near Bit Inclination	5.93	6.76	7.000	2.250
1	ATC_MWD	14381913	Gamma (single)	2.76	12.93	6.940	2.250
1	ATC_MWD	14381913	Directional (mag)	12.27	22.44	6.940	2.250

Service and Tool Mnemonics

Mnemonic	Name	Description
ATC_SU	ATC_SU	Auto Trak Curve Steering Unit
ATC_MWD	ATC_MWD	Auto Trak Curve MWD
ATC_LCPM	ATC_LCPM	Auto Trak Curve LCPM

Comments

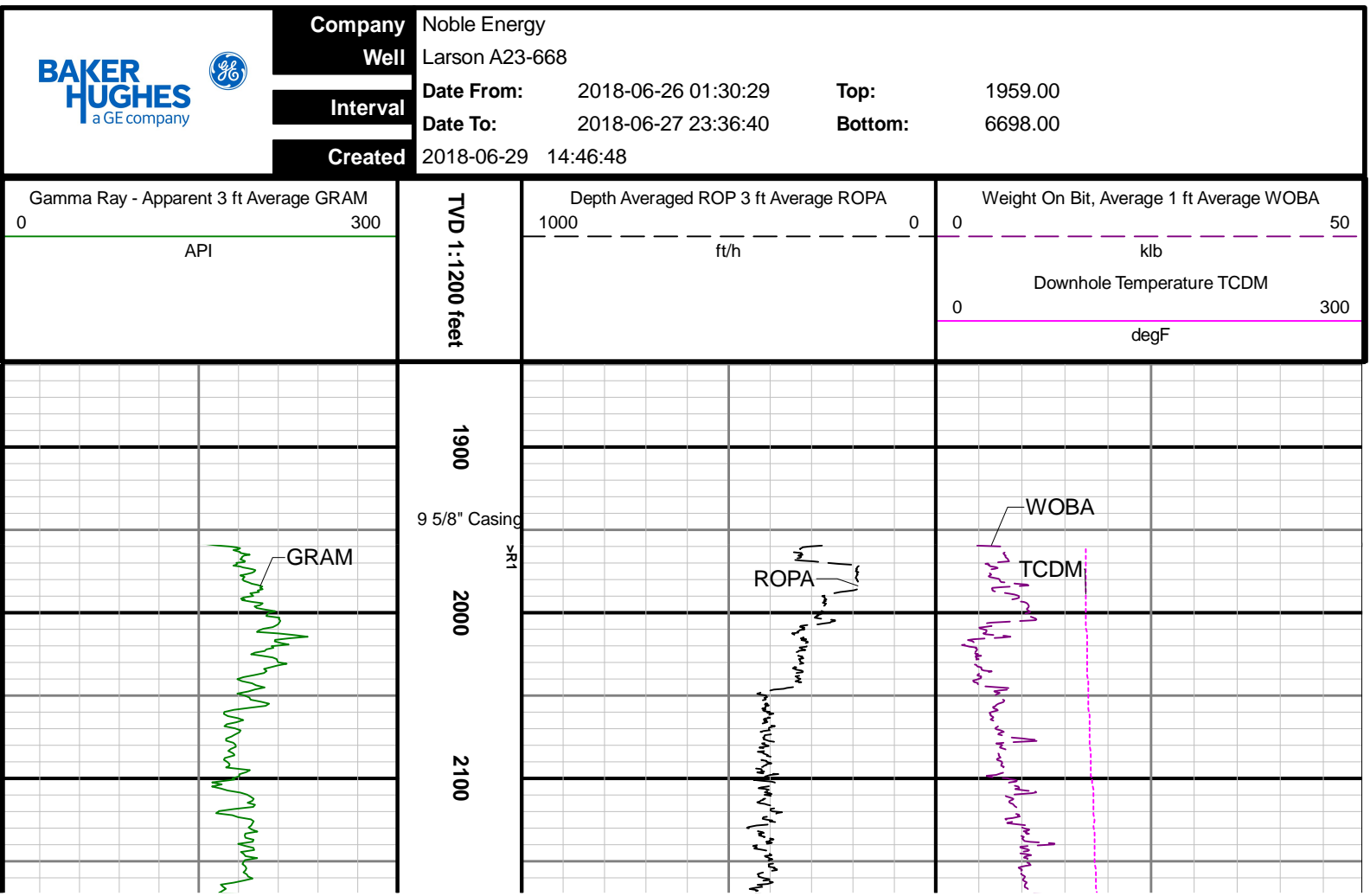
1	Depth measurements were obtained from a depth control system not supplied or operated by Baker Hughes. Due to lack of control by Baker Hughes logging engineers, depth calibrations and measurements could not be independently verified.
2	On 6/29/18, the well was shut in for a period of 24 hours due to a gas leak in the wellhead. The well was then restarted on 7/1/18 and the interval from 17400 feet MD (1959 to 6692 feet TVD) was logged.
3	On 6/29/18, the well was shut in for a period of 24 hours due to a gas leak in the wellhead. The well was then restarted on 7/1/18 and the interval from 17400 feet MD (1959 to 6692 feet TVD) was logged.

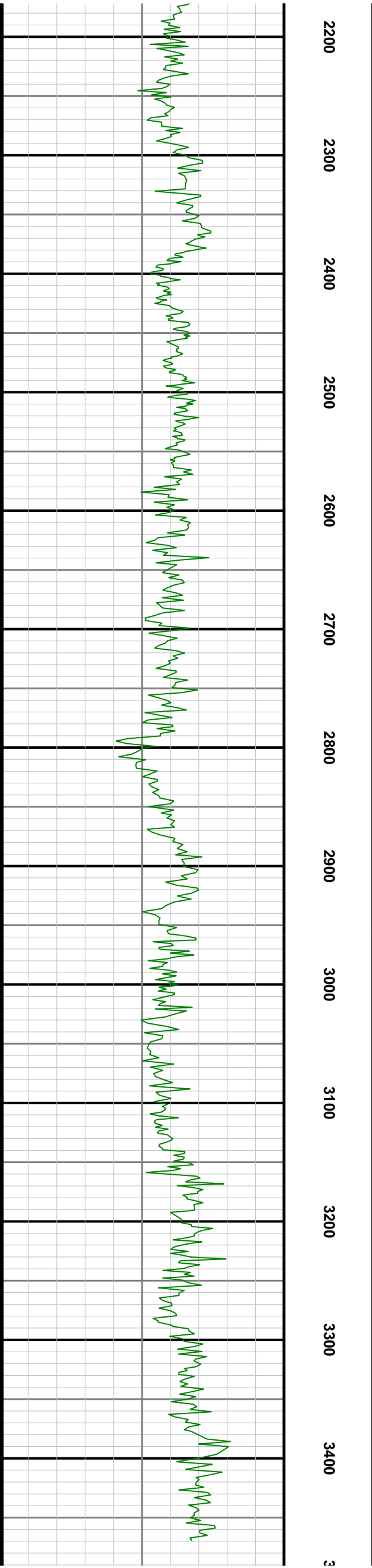
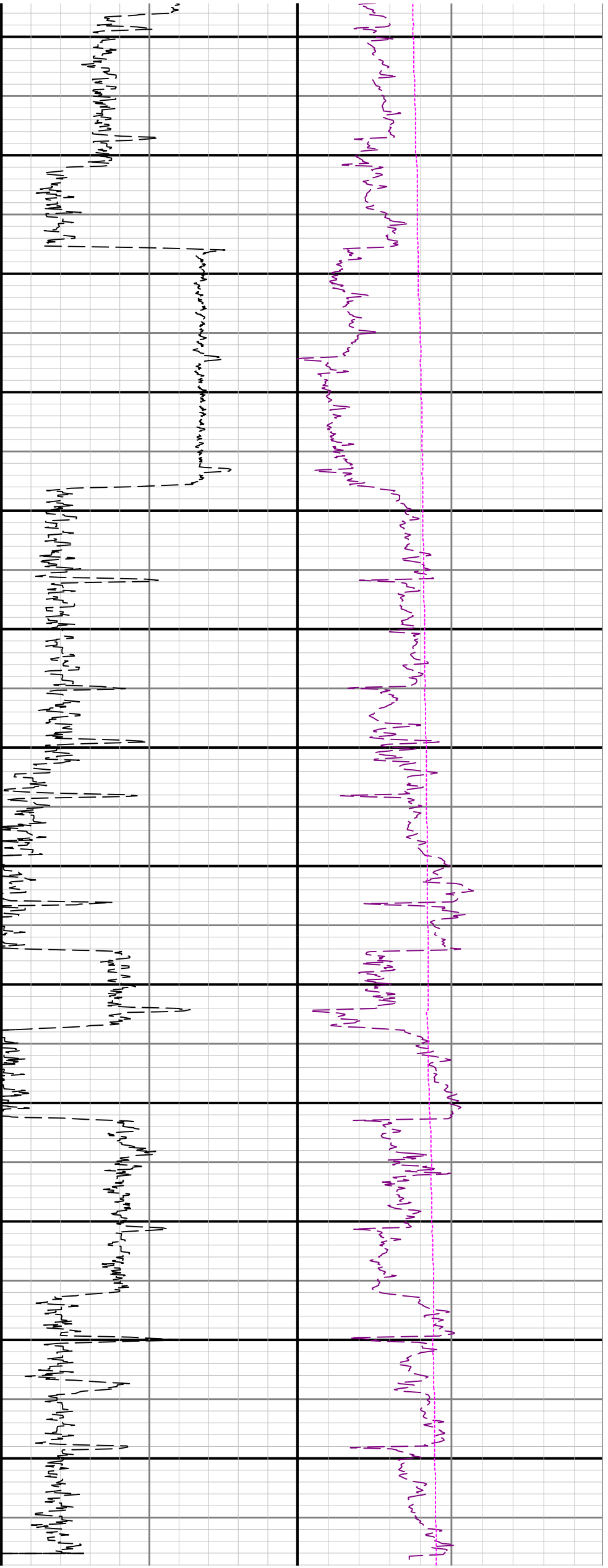
Remarks

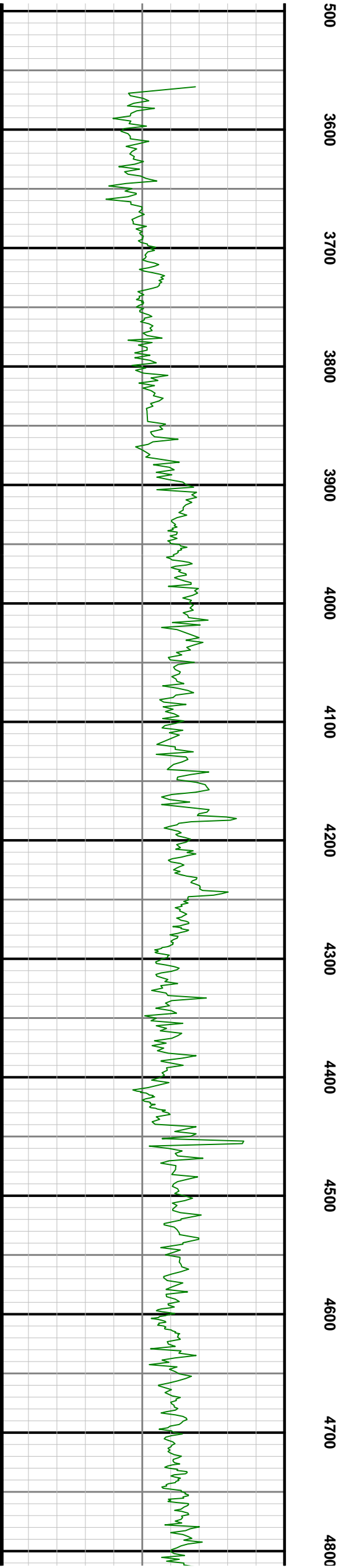
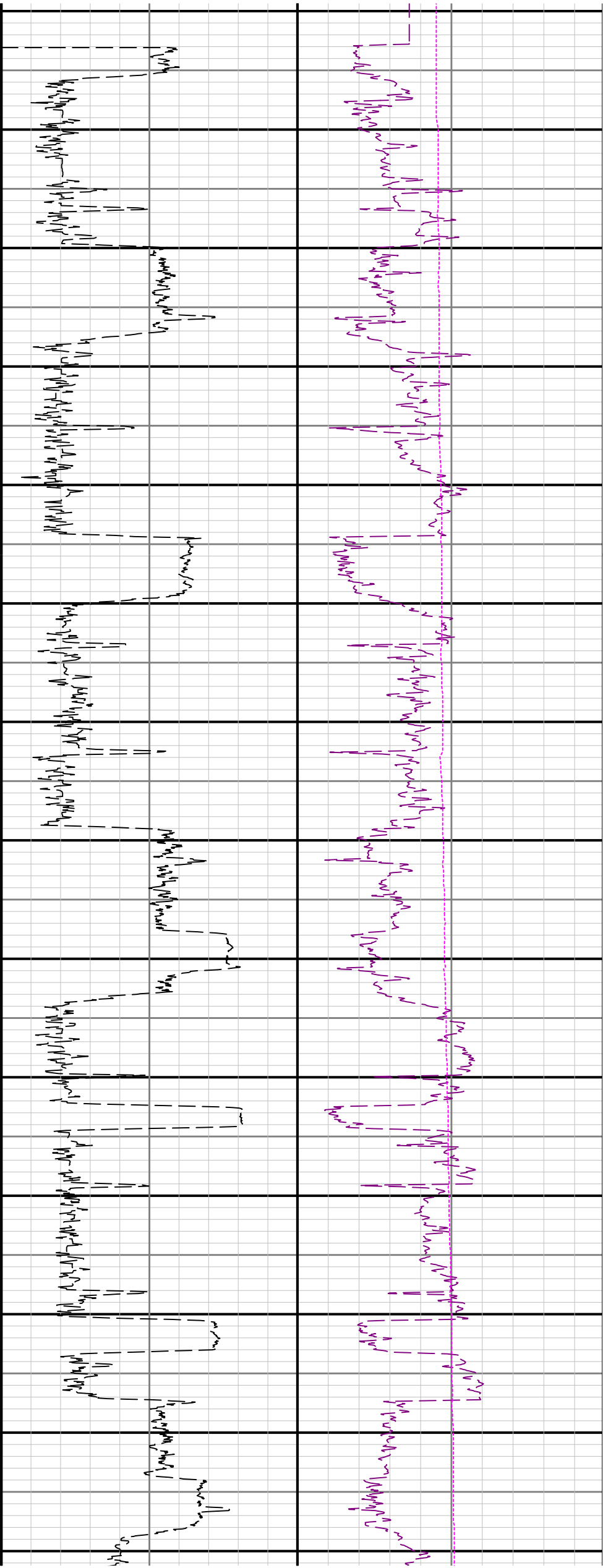
Number	Measured Depth (ft)	Hole Section (in)	Run No.	Remark
1	3530.00	8.500	1	Gap in data from 3502 to 3605 feet MD (3469 to 3569 feet TVD) due to an outage in the pason system
2	17400.00	8.500	1	The interval from 17387 to 17400 feet MD (6692 feet TVD) was not logged due to sensor to bit offset at well TD.

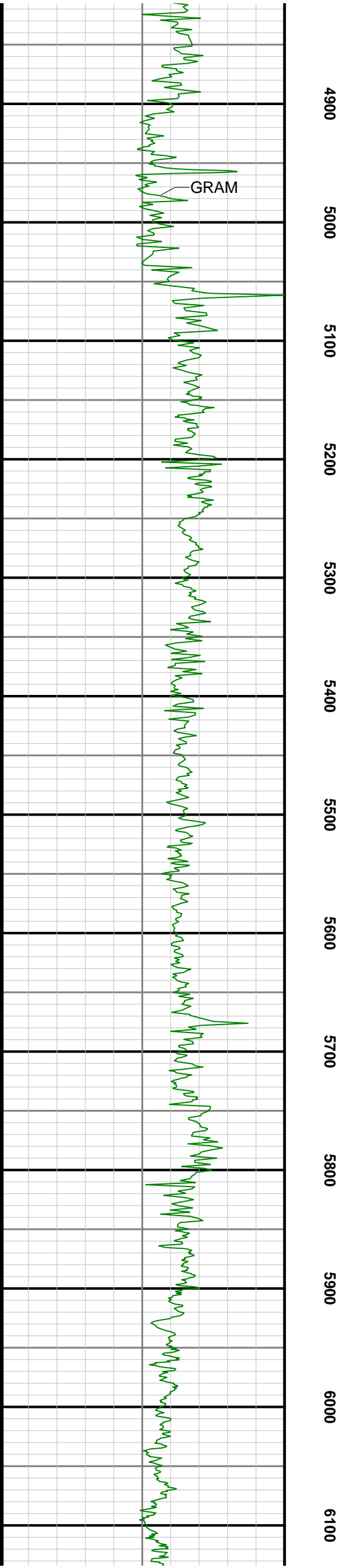
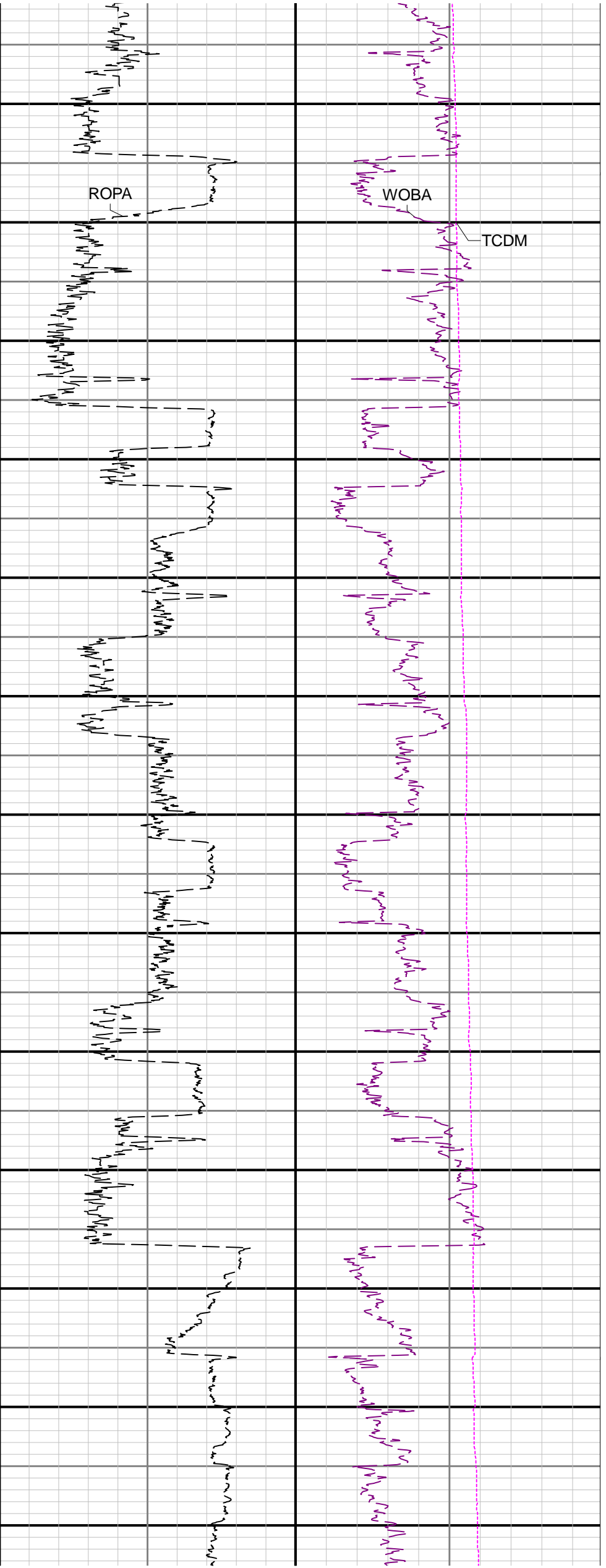
Curve Mnemonics

Presented Curves	Description	Units
ROPA	Depth Averaged ROP 3 ft Average	ft/h
WOBA	Weight On Bit, Average 1 ft Average	klb
GRAM	Gamma Ray - Apparent - Memory 3 ft Average	API
TCDM	Downhole Temperature	degF











	1690.00	0.05	57.82	N/A	0.73	-1.24	1689.99	-2992.01	1.17	95.00	0.41	-0.40	26.35
	1784.00	0.41	6.97	N/A	1.08	-1.16	1783.99	-2898.01	1.06	94.00	0.40	0.38	-54.10
	1878.00	1.07	359.05	N/A	2.29	-1.14	1877.98	-2804.02	0.92	94.00	0.71	0.70	-8.43
	1938.00	1.55	8.09	N/A	3.66	-1.03	1937.96	-2744.04	0.68	60.00	0.87	0.80	15.07
	1982.00	0.33	352.15	104.1	4.37	-0.97	1981.95	-2700.05	0.55	44.00	2.81	-2.77	-36.23
	2077.00	1.92	135.22	109.5	3.51	0.12	2076.94	-2605.06	-0.45	95.00	2.31	1.67	150.60
	2171.00	5.76	151.57	N/A	-1.75	3.47	2170.71	-2511.29	-3.29	94.00	4.21	4.09	17.39
	2266.00	7.37	149.43	114.9	-11.19	8.84	2265.09	-2416.91	-7.75	95.00	1.71	1.69	-2.25
	2360.00	7.99	151.92	114.9	-22.15	14.98	2358.24	-2323.76	-12.84	94.00	0.75	0.66	2.65
	2455.00	9.73	145.38	117.6	-34.58	22.65	2452.11	-2229.89	-19.31	95.00	2.11	1.83	-6.88
	2550.00	11.80	136.17	120.3	-48.20	33.94	2545.44	-2136.56	-29.27	95.00	2.83	2.18	-9.69
	2644.00	14.49	138.43	123.0	-63.93	48.41	2636.97	-2045.03	-42.20	94.00	2.91	2.86	2.40
	2738.00	14.50	134.60	125.7	-80.99	64.59	2727.98	-1954.02	-56.71	94.00	1.02	0.01	-4.07
	2833.00	14.73	126.95	125.7	-96.61	82.71	2819.91	-1862.09	-73.29	95.00	2.04	0.24	-8.05
	2928.00	14.52	121.02	125.7	-110.00	102.57	2911.84	-1770.16	-91.80	95.00	1.59	-0.22	-6.24
	3022.00	14.71	117.46	120.3	-121.58	123.26	3002.80	-1679.20	-111.32	94.00	0.98	0.20	-3.79
	3117.00	13.94	116.99	128.4	-132.34	144.16	3094.85	-1587.15	-131.11	95.00	0.82	-0.81	-0.49
	3211.00	13.97	120.49	87.8	-143.23	164.02	3186.07	-1495.93	-149.87	94.00	0.90	0.03	3.72
	3306.00	14.00	124.73	131.1	-155.60	183.35	3278.26	-1403.74	-167.95	95.00	1.08	0.03	4.46
	3401.00	13.39	131.59	133.8	-169.45	201.02	3370.56	-1311.44	-184.25	95.00	1.82	-0.64	7.22
	3495.00	12.73	140.13	133.8	-184.62	215.80	3462.14	-1219.86	-197.54	94.00	2.17	-0.70	9.09
	3590.00	14.12	143.28	71.6	-201.95	229.44	3554.54	-1127.46	-209.50	95.00	1.65	1.46	3.32
	3684.00	14.04	134.11	136.5	-219.07	244.49	3645.73	-1036.27	-222.87	94.00	2.37	-0.09	-9.76
	3779.00	14.07	127.63	136.5	-234.15	261.91	3737.89	-944.11	-238.80	95.00	1.66	0.03	-6.82
	3873.00	14.07	123.99	139.2	-247.51	280.43	3829.07	-852.93	-255.99	94.00	0.94	0.00	-3.87
	3968.00	13.95	119.75	139.2	-259.65	299.95	3921.25	-760.75	-274.28	95.00	1.09	-0.13	-4.46
	4062.00	14.54	119.83	141.9	-271.14	320.02	4012.36	-669.64	-293.19	94.00	0.63	0.63	0.09
	4156.00	14.47	121.94	141.9	-283.22	340.22	4103.37	-578.63	-312.17	94.00	0.57	-0.07	2.24
	4251.00	14.39	125.96	141.9	-296.43	359.85	4195.37	-486.63	-330.47	95.00	1.06	-0.08	4.23
	4345.00	14.43	130.92	144.6	-310.97	378.16	4286.42	-395.58	-347.33	94.00	1.31	0.04	5.28
	4439.00	14.29	139.13	144.6	-327.41	394.60	4377.49	-304.51	-362.16	94.00	2.17	-0.15	8.73
	4534.00	14.09	146.17	147.3	-345.89	408.71	4469.60	-212.40	-374.48	95.00	1.83	-0.21	7.41
	4628.00	14.20	150.96	147.3	-365.47	420.68	4560.75	-121.25	-384.56	94.00	1.25	0.12	5.10
	4723.00	14.17	152.63	150.0	-385.98	431.68	4652.85	-29.15	-393.59	95.00	0.43	-0.03	1.76
	4817.00	14.35	152.35	152.7	-406.52	442.37	4743.96	61.96	-402.31	94.00	0.21	0.19	-0.30
	4912.00	14.26	147.81	152.7	-426.85	454.07	4836.02	154.02	-412.05	95.00	1.18	-0.09	-4.78
	5006.00	14.38	140.81	155.4	-445.70	467.62	4927.10	245.10	-423.77	94.00	1.85	0.13	-7.45
	5101.00	14.27	135.23	155.4	-463.15	483.32	5019.15	337.15	-437.76	95.00	1.46	-0.12	-5.87
	5195.00	13.70	141.13	158.1	-480.05	498.46	5110.37	428.37	-451.26	94.00	1.63	-0.61	6.28
	5290.00	14.28	145.83	160.8	-498.50	512.10	5202.56	520.56	-463.11	95.00	1.34	0.61	4.95
	5384.00	14.36	142.81	160.8	-517.38	525.66	5293.64	611.64	-474.84	94.00	0.80	0.09	-3.21
	5479.00	14.34	144.69	163.5	-536.36	539.58	5385.67	703.67	-486.91	95.00	0.49	-0.02	1.98
	5573.00	14.39	143.15	166.2	-555.21	553.31	5476.73	794.73	-498.82	94.00	0.41	0.05	-1.64
	5668.00	14.44	138.93	166.2	-573.58	568.18	5568.75	886.75	-511.89	95.00	1.11	0.05	-4.44
	5762.00	14.41	135.46	168.9	-590.76	584.08	5659.78	977.78	-526.12	94.00	0.92	-0.03	-3.69
	5856.00	14.17	132.01	171.6	-606.80	600.83	5750.88	1068.88	-541.29	94.00	0.94	-0.26	-3.67
	5951.00	14.13	135.79	174.3	-622.89	617.56	5843.00	1161.00	-556.44	95.00	0.97	-0.04	3.98
	6045.00	8.79	156.36	174.3	-637.71	628.45	5935.13	1253.13	-565.89	94.00	7.07	-5.68	21.88
	6140.00	9.24	193.02	174.3	-651.80	629.65	6029.03	1347.03	-565.76	95.00	5.96	0.47	38.59
	6234.00	14.45	231.32	179.7	-666.52	618.77	6121.13	1439.13	-553.55	94.00	9.75	5.54	40.74
	6329.00	19.87	253.09	179.7	-678.64	594.02	6211.96	1529.96	-527.78	95.00	8.76	5.71	22.92
	6423.00	27.88	254.73	179.7	-689.09	557.48	6297.84	1615.84	-490.41	94.00	8.55	8.52	1.74
	6517.00	37.02	254.85	185.2	-702.30	508.86	6377.08	1695.08	-440.77	94.00	9.72	9.72	0.13
	6612.00	45.14	260.87	187.9	-715.15	447.88	6448.66	1766.66	-378.86	95.00	9.50	8.55	6.34
	6707.00	54.49	267.03	187.9	-722.51	375.83	6509.93	1827.93	-306.43	95.00	11.01	9.84	6.48
	6801.00	61.95	271.85	187.9	-723.16	296.01	6559.42	1877.42	-226.91	94.00	9.05	7.94	5.13
	6895.00	67.17	272.41	187.9	-720.00	211.22	6599.79	1917.79	-142.78	94.00	5.58	5.55	0.60
	6990.00	75.05	266.22	196.0	-721.18	121.47	6630.54	1948.54	-53.31	95.00	10.33	8.29	-6.52
	7084.00	86.24	261.69	196.0	-730.99	29.41	6645.81	1963.81	39.26	94.00	12.82	11.90	-4.82
	7179.00	89.88	261.90	196.0	-744.54	-64.55	6649.02	1967.02	134.07	95.00	3.84	3.83	0.22
	7273.00	89.91	263.78	201.4	-756.26	-157.81	6649.20	1967.20	228.02	94.00	2.00	0.03	2.00
	7367.00	90.00	265.87	204.1	-764.73	-251.42	6649.27	1967.27	322.02	94.00	2.23	0.10	2.22
	7462.00	90.00	267.48	206.8	-770.24	-346.26	6649.27	1967.27	416.95	95.00	1.69	0.00	1.69
	7556.00	89.97	269.29	209.5	-772.89	-440.22	6649.29	1967.29	510.75	94.00	1.93	-0.03	1.93
	7651.00	90.09	271.76	212.2	-772.02	-535.21	6649.24	1967.24	605.23	95.00	2.60	0.13	2.60
	7745.00	89.94	273.09	212.2	-768.04	-629.12	6649.22	1967.22	698.36	94.00	1.42	-0.16	1.41
	7840.00	90.15	273.76	214.9	-762.37	-723.95	6649.14	1967.14	792.24	95.00	0.74	0.22	0.71
	7934.00	90.25	272.70	217.6	-757.07	-817.80	6648.82	1966.82	885.18	94.00	1.13	0.11	-1.13
	8029.00	90.25	271.90	217.6	-753.26	-912.72	6648.40	1966.40	979.33	95.00	0.84	0.00	-0.84
	8123.00	90.18	270.69	220.3	-751.14	-1006.69	6648.05	1966.05	1072.69	94.00	1.29	-0.07	-1.29
	8218.00	90.25	269.39	220.3	-751.07	-1101.69	6647.69	1965.69	1167.26	95.00	1.37	0.07	-1.37
	8312.00	90.22	267.54	220.3	-753.59	-1195.65	6647.31	1965.31	1261.04	94.00	1.97	-0.03	-1.97
	8406.00	90.03	266.23	223.0	-758.70	-1289.51	6647.10	1965.10	1354.97	94.00	1.41	-0.20	-1.39
	8501.00	89.97	264.99	223.0	-765.97	-1384.23	6647.10	1965.10	1449.95	95.00	1.31	-0.06	-1.31
	8595.00	90.15	266.26	225.7	-773.14	-1477.96	6647.00	1965.00	1543.93	94.00	1.36	0.19	1.35
	8690.00	90.18	266.84	225.7	-778.85	-1572.78	6646.73	1964.73	1638.88	95.00	0.61	0.03	0.61
	8784.00	90.06	266.34	228.4	-784.45	-1666.62	6646.53	1964.53	1732.82	94.00	0.55	-0.13	-0.53
	8879.00	90.06	267.43	228.4	-789.61	-1761.47	6646.43	1964.43	1827.75	95.00	1.15	0.00	1.15
	8973.00	90.00	267.94	231.1	-793.40	-1855.40	6646.38	1964.38	1921.61	94.00	0.55	-0.06	0.54
	9068.00	90.00	268.26	231.1	-796.55	-1950.34	6646.38	1964.38	2016.44	95.00	0.34	0.00	0.34
	9163.00	90.06	269.07	231.1	-798.77	-2045.32	6646.34	1964.34	2111.20	95.00	0.85	0.06	0.85
	9257.00	90.22	272.25	233.8	-797.69	-2139.30	6646.11	1964.11	2204.67	94.00	3.39	0.17	3.38
	9352.00	89.78	272.35	233.8	-793.87	-2234.22	6646.11	1964.11	2298.81	95.00	0.47	-0.46	0.11
	9446.00	90.03	270.67	233.8	-791.40	-2328.19	6646.26	1964.26	2392.13	94.00	1.81	0.27	-1.79
	9541.00	89.97	270.05	233.8	-790.80	-2423.18	6646.26	1964.26	2486.65	95.00	0.66	-0.06	-0.65
	9635.00	89.91	268.78	236.5	-791.76	-2517.18	6646.36	1964.36	2580.32	94.00			

	9919.00	89.85	264.83	239.2	-809.95	-2800.52	6646.56	1964.56	2864.13	95.00	0.32	-0.06	-0.32
	10013.00	89.85	265.31	239.2	-818.03	-2894.17	6646.80	1964.80	2958.12	94.00	0.51	0.00	0.51
	10108.00	90.09	267.20	241.9	-824.24	-2988.97	6646.85	1964.85	3053.08	95.00	2.01	0.25	1.99
	10203.00	89.91	268.21	241.9	-828.04	-3083.89	6646.85	1964.85	3147.94	95.00	1.08	-0.19	1.06
	10297.00	90.00	268.68	241.9	-830.59	-3177.85	6646.93	1964.93	3241.73	94.00	0.51	0.10	0.50
	10392.00	89.91	269.20	244.6	-832.35	-3272.84	6647.00	1965.00	3336.46	95.00	0.56	-0.09	0.55
	10486.00	89.82	269.14	244.6	-833.71	-3366.83	6647.22	1965.22	3430.16	94.00	0.12	-0.10	-0.06
	10581.00	90.03	268.43	244.6	-835.72	-3461.80	6647.35	1965.35	3524.91	95.00	0.78	0.22	-0.75
	10675.00	89.88	269.21	247.3	-837.66	-3555.78	6647.42	1965.42	3618.66	94.00	0.84	-0.16	0.83
	10770.00	89.97	272.17	247.3	-836.52	-3650.77	6647.55	1965.55	3713.12	95.00	3.12	0.09	3.12
	10864.00	90.00	271.92	247.3	-833.16	-3744.71	6647.57	1965.57	3806.33	94.00	0.27	0.03	-0.27
	10959.00	89.78	271.97	250.0	-829.94	-3839.65	6647.75	1965.75	3900.55	95.00	0.24	-0.23	0.05
	11053.00	89.88	270.82	250.0	-827.65	-3933.62	6648.03	1966.03	3993.89	94.00	1.23	0.11	-1.22
	11148.00	89.97	271.04	250.0	-826.11	-4028.61	6648.16	1966.16	4088.32	95.00	0.25	0.09	0.23
	11243.00	90.03	270.13	250.0	-825.14	-4123.60	6648.16	1966.16	4182.80	95.00	0.96	0.06	-0.96
	11337.00	89.85	268.89	250.0	-825.94	-4217.60	6648.26	1966.26	4276.46	94.00	1.33	-0.19	-1.32
	11432.00	89.72	266.48	250.0	-829.78	-4312.51	6648.61	1966.61	4371.32	95.00	2.54	-0.14	-2.54
	11527.00	90.03	265.51	252.7	-836.41	-4407.28	6648.82	1966.82	4466.29	95.00	1.07	0.33	-1.02
	11621.00	90.06	265.17	252.7	-844.05	-4500.97	6648.75	1966.75	4560.28	94.00	0.36	0.03	-0.36
	11715.00	89.85	265.56	255.4	-851.65	-4594.66	6648.82	1966.82	4654.27	94.00	0.47	-0.22	0.41
	11810.00	89.08	266.65	255.4	-858.10	-4689.43	6649.71	1967.71	4749.23	95.00	1.40	-0.81	1.15
	11905.00	89.48	268.09	255.4	-862.46	-4784.32	6650.90	1968.90	4844.11	95.00	1.57	0.42	1.52
	11999.00	89.45	271.49	255.4	-862.80	-4878.31	6651.78	1969.78	4937.71	94.00	3.62	-0.03	3.62
	12094.00	89.11	271.90	258.1	-859.99	-4973.26	6652.97	1970.97	5031.98	95.00	0.56	-0.36	0.43
	12282.00	89.35	272.73	255.4	-852.40	-5161.08	6655.50	1973.50	5218.27	188.00	0.46	0.13	0.44
	12376.00	89.32	272.41	258.1	-848.18	-5254.98	6656.59	1974.59	5311.36	94.00	0.34	-0.03	-0.34
	12470.00	89.17	271.73	258.1	-844.79	-5348.91	6657.83	1975.83	5404.56	94.00	0.74	-0.16	-0.72
	12565.00	89.11	271.02	258.1	-842.51	-5443.87	6659.25	1977.25	5498.89	95.00	0.75	-0.06	-0.75
	12660.00	89.23	270.26	260.8	-841.45	-5538.86	6660.63	1978.63	5593.35	95.00	0.81	0.13	-0.80
	12754.00	89.26	266.86	260.8	-843.81	-5632.81	6661.87	1979.87	5687.11	94.00	3.62	0.03	-3.62
	12849.00	88.86	265.98	260.8	-849.74	-5727.61	6663.43	1981.43	5782.05	95.00	1.02	-0.42	-0.93
	12944.00	88.98	265.72	260.8	-856.62	-5822.34	6665.22	1983.22	5877.01	95.00	0.30	0.13	-0.27
	13038.00	88.71	265.87	263.5	-863.51	-5916.07	6667.11	1985.11	5970.97	94.00	0.33	-0.29	0.16
	13133.00	88.89	266.31	263.5	-869.98	-6010.83	6669.10	1987.10	6065.92	95.00	0.50	0.19	0.46
	13227.00	89.01	266.19	263.5	-876.13	-6104.61	6670.83	1988.83	6159.86	94.00	0.18	0.13	-0.13
	13322.00	88.71	266.76	260.8	-881.97	-6199.41	6672.72	1990.72	6254.79	95.00	0.68	-0.32	0.60
	13416.00	89.02	267.97	263.5	-886.29	-6293.29	6674.58	1992.58	6348.67	94.00	1.33	0.33	1.29
	13511.00	88.83	268.59	263.5	-889.14	-6388.23	6676.36	1994.36	6443.46	95.00	0.68	-0.20	0.65
	13606.00	88.98	269.36	266.2	-890.84	-6483.20	6678.18	1996.18	6538.16	95.00	0.83	0.16	0.81
	13700.00	88.95	270.66	266.2	-890.82	-6577.18	6679.87	1997.87	6631.73	94.00	1.38	-0.03	1.38
	13795.00	88.92	270.91	266.2	-889.52	-6672.15	6681.64	1999.64	6726.16	95.00	0.27	-0.03	0.26
	13889.00	89.01	270.32	266.2	-888.51	-6766.13	6683.34	2001.34	6819.64	94.00	0.63	0.10	-0.63
	13984.00	88.86	270.12	266.2	-888.15	-6861.12	6685.10	2003.10	6914.17	95.00	0.26	-0.16	-0.21
	14078.00	88.89	271.16	266.2	-887.10	-6955.09	6686.95	2004.95	7007.63	94.00	1.11	0.03	1.11
	14173.00	88.74	270.72	269.0	-885.54	-7050.06	6688.91	2006.91	7102.03	95.00	0.49	-0.16	-0.46
	14268.00	88.89	269.71	266.2	-885.19	-7145.04	6690.88	2008.88	7196.56	95.00	1.07	0.16	-1.06
	14362.00	88.80	269.01	269.0	-886.24	-7239.01	6692.77	2010.77	7290.21	94.00	0.75	-0.10	-0.74
	14457.00	88.86	268.59	269.0	-888.22	-7333.97	6694.71	2012.71	7384.94	95.00	0.45	0.06	-0.44
	14551.00	88.71	268.39	269.0	-890.70	-7427.92	6696.71	2014.71	7478.71	94.00	0.27	-0.16	-0.21
	14646.00	89.97	267.91	269.0	-893.77	-7522.86	6697.80	2015.80	7573.52	95.00	1.42	1.33	-0.51
	14740.00	90.00	267.17	271.7	-897.80	-7616.77	6697.82	2015.82	7667.39	94.00	0.79	0.03	-0.79
	14835.00	90.03	266.68	271.7	-902.90	-7711.63	6697.80	2015.80	7762.32	95.00	0.52	0.03	-0.52
	14929.00	89.85	265.01	271.7	-909.71	-7805.38	6697.90	2015.90	7856.29	94.00	1.79	-0.19	-1.78
	15024.00	90.31	263.67	271.7	-919.08	-7899.92	6697.77	2015.77	7951.29	95.00	1.49	0.48	-1.41
	15118.00	89.91	260.04	271.7	-932.39	-7992.95	6697.58	2015.58	8045.16	94.00	3.89	-0.43	-3.86
	15213.00	90.12	260.23	271.7	-948.67	-8086.55	6697.56	2015.56	8139.87	95.00	0.30	0.22	0.20
	15308.00	90.25	266.94	269.0	-959.28	-8180.90	6697.25	2015.25	8234.80	95.00	7.06	0.14	7.06
	15402.00	90.00	270.88	271.7	-961.07	-8274.86	6697.05	2015.05	8328.52	94.00	4.20	-0.27	4.19
	15497.00	90.18	271.57	269.0	-959.03	-8369.84	6696.90	2014.90	8422.89	95.00	0.75	0.19	0.73
	15591.00	90.15	271.57	269.0	-956.46	-8463.80	6696.63	2014.63	8516.20	94.00	0.03	-0.03	0.00
	15685.00	90.22	271.80	271.7	-953.69	-8557.76	6696.32	2014.32	8609.48	94.00	0.26	0.07	0.24
	15780.00	90.15	270.86	271.7	-951.49	-8652.74	6696.02	2014.02	8703.83	95.00	0.99	-0.07	-0.99
	15875.00	90.22	272.28	274.4	-948.89	-8747.70	6695.71	2013.71	8798.13	95.00	1.50	0.07	1.49
	15969.00	90.18	273.10	274.4	-944.48	-8841.59	6695.38	2013.38	8891.20	94.00	0.87	-0.04	0.87
	16064.00	90.15	271.81	274.4	-940.41	-8936.50	6695.11	2013.11	8985.31	95.00	1.36	-0.03	-1.36
	16158.00	90.25	270.67	274.4	-938.37	-9030.48	6694.78	2012.78	9078.68	94.00	1.22	0.11	-1.21
	16253.00	90.22	269.31	274.4	-938.39	-9125.48	6694.39	2012.39	9173.26	95.00	1.43	-0.03	-1.43
	16347.00	90.06	268.14	271.7	-940.48	-9219.45	6694.16	2012.16	9267.02	94.00	1.26	-0.17	-1.24
	16536.00	89.97	269.22	274.4	-944.83	-9408.40	6694.11	2012.11	9455.54	189.00	0.57	-0.05	0.57
	16631.00	90.15	270.14	274.4	-945.36	-9503.40	6694.01	2012.01	9550.17	95.00	0.99	0.19	0.97
	16725.00	90.31	270.66	274.4	-944.71	-9597.39	6693.64	2011.64	9643.69	94.00	0.58	0.17	0.55
	16820.00	90.06	270.48	274.4	-943.76	-9692.39	6693.33	2011.33	9738.18	95.00	0.32	-0.26	-0.19
	16914.00	90.00	269.85	274.4	-943.49	-9786.39	6693.28	2011.28	9831.74	94.00	0.67	-0.06	-0.67
	17009.00	90.37	269.59	277.1	-943.96	-9881.38	6692.97	2010.97	9926.36	95.00	0.48	0.39	-0.27
	17103.00	90.25	269.95	277.1	-944.33	-9975.38	6692.46	2010.46	10019.98	94.00	0.40	-0.13	0.38
	17198.00	90.00	269.36	277.1	-944.91	-10070.38	6692.26	2010.26	10114.61	95.00	0.67	-0.26	-0.62
	17292.00	90.00	268.47	277.1	-946.69	-10164.36	6692.26	2010.26	10208.35	94.00	0.95	0.00	-0.95
	17376.00	90.03	267.97	277.1	-949.30	-10248.32	6692.23	2010.23	10292.18	84.00	0.60	0.04	-0.60
Projection	17400.00	90.03	267.97	N/A	-950.15	-10272.31	6692.22	2010.22	10316.14	24.00	0.00	0.00	0.00