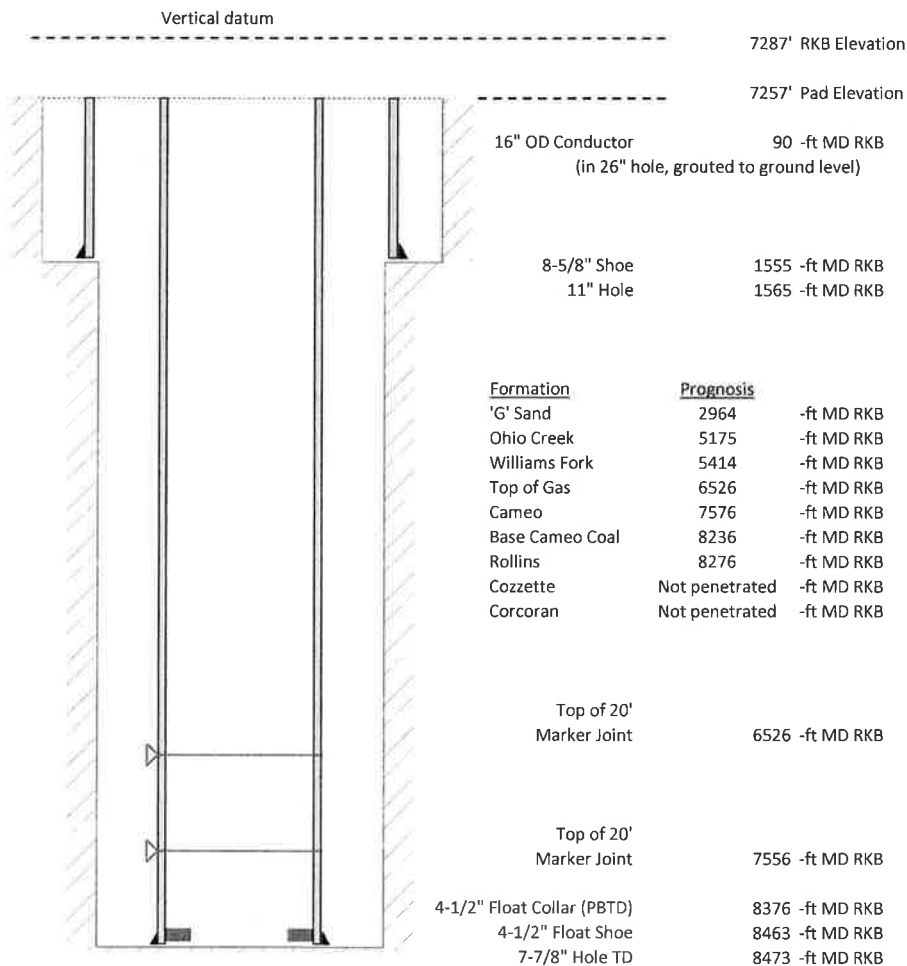


Laramie Energy, LLC  
 BCU 0993-21-10E  
 Slot A-10  
 H&P 522 (30-ft KB)

API #: 05-077-10522-00  
 SW/4 NW/4 S13/T9S/R94W/6th PM  
 Mesa County, CO  
 Date of diagram: 8/24/2018



#### Cementing details

| 8-5/8" 24# Surface Csg    | Lead | Tail |
|---------------------------|------|------|
| Density (ppg)             | 12.3 | 12.8 |
| Volume (sx)               | 177  | 100  |
| Yield (cf/sx)             | 2.46 | 2.18 |
| Top (ft RKB)              | 0    | 780  |
| Bottom (ft RKB)           | 780  | 1555 |
| Returns (full or partial) | Full | Full |

| 4-1/2" 11.6# Prod Csg     | Lead | Tail |
|---------------------------|------|------|
| Density (ppg)             | 12.5 | 13.3 |
| Volume (sx)               | 848  | 408  |
| Yield (cf/sx)             | 1.94 | 1.73 |
| Est Top (ft RKB)          | 1030 | 6326 |
| Est Bottom (ft RKB)       | 6326 | 8463 |
| Returns (full or partial) | Full | Full |

| Displacement |
|--------------|
| 8.3 ppg      |
| 126 bbls     |

Other Remarks: 21 bbls cement back on surface job. Production- 40 bbls cement to surface