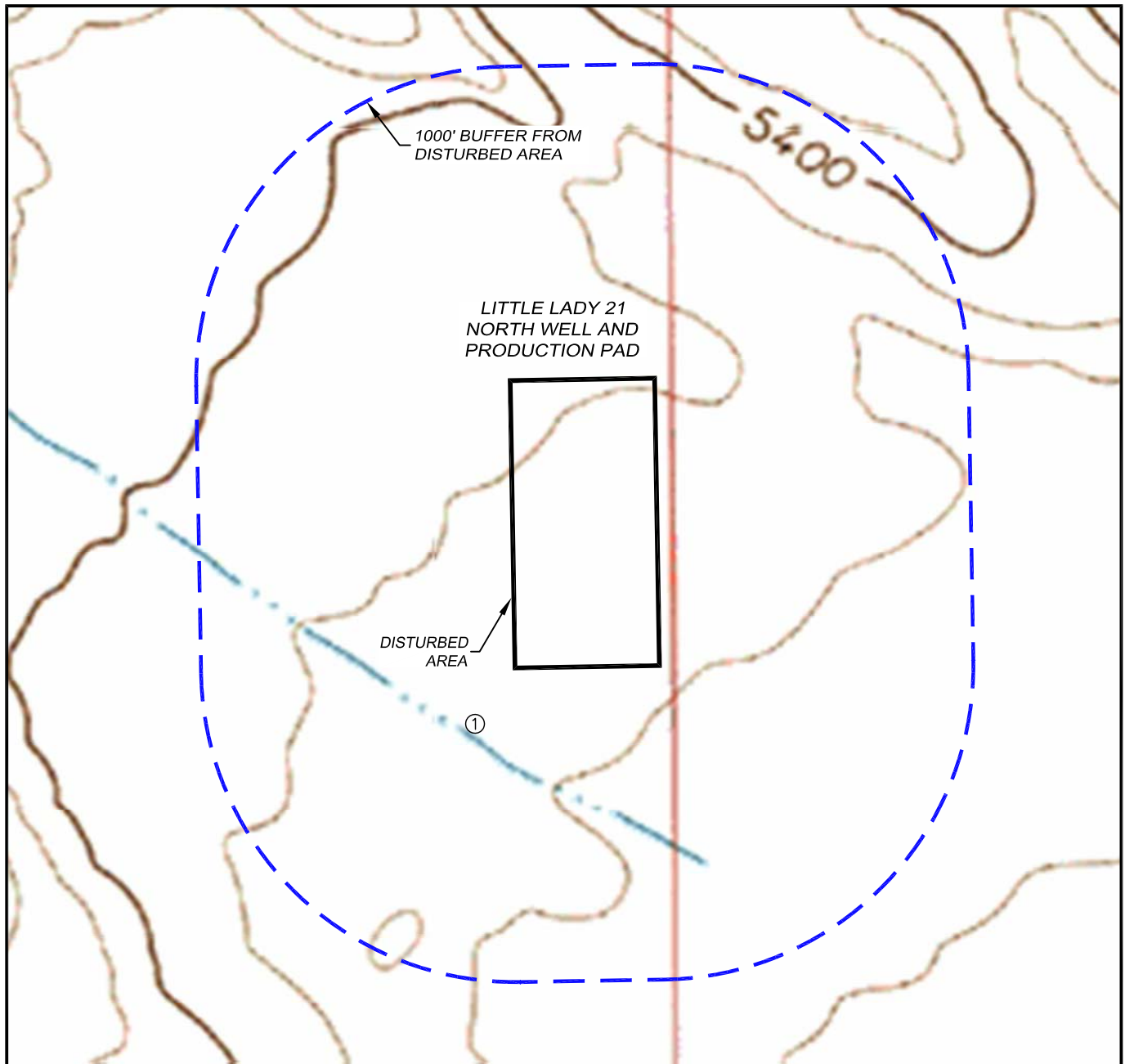
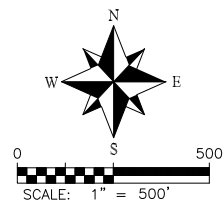


HYDROLOGY MAP
LITTLE LADY 21 NORTH WELL AND PRODUCTION PAD
SECTION 21, TOWNSHIP 11 NORTH, RANGE 64 WEST OF THE 6TH P.M.



(MEASURED FROM THE CLOSEST EDGE OF DISTURBED AREA)

1. INTERMITTENT STREAM: 257'± SW



UPLAND EXPLORATION

DALEY LAND SURVEYING, INC.
PARKER, COLORADO
303.953.9841