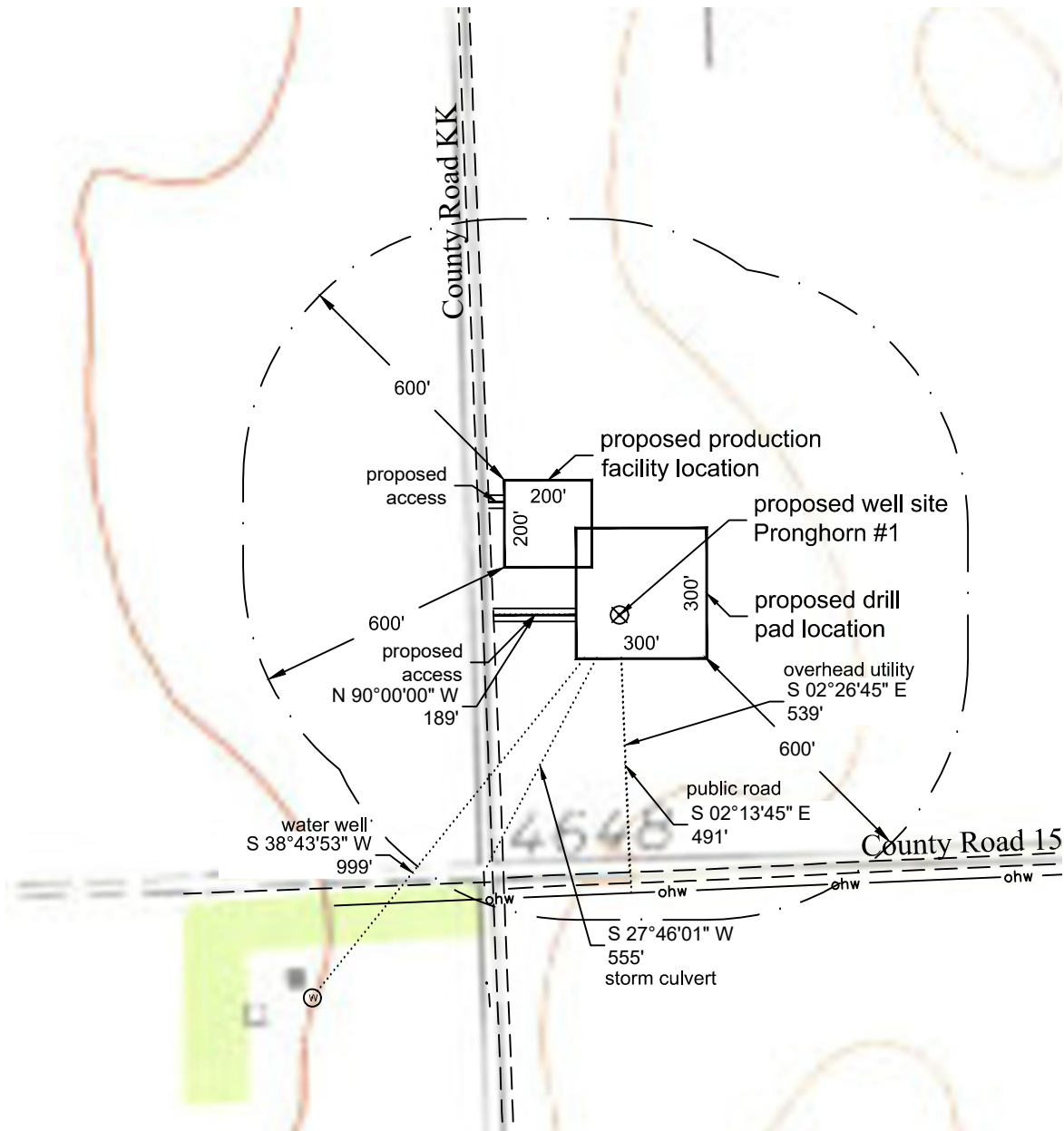


# Location Drawing



## Distance to nearest from Well:

Building:	942'
Building Unit:	1119'
High Occupancy Building Unit:	5280'
Designated Outside Activity Area:	5280'
Public Road:	289'
Aboveground Utility:	639'
Railroad:	5280'
Property Line:	300'

## Distance to nearest from Production Facility:

Building:	945'
Building Unit:	1095'
High Occupancy Building Unit:	5280'
Designated Outside Activity Area:	5280'
Public Road:	68'
Aboveground Utility:	765'
Railroad:	5280'
Property Line:	78'

P:\Project\2018\18050\dwg\18050\_imp.dwg December 07, 2018 - 3:43pm

Well Name:	<b>Pronghorn #1</b>	Field Date <b>6.1.2018</b>	Prepared for:	Project#: <b>18050.001</b>
		Party Chief <b>ADS</b>	<b>St. Croix Operating, Inc.</b>	
Section 15-T3S-R51W-6th PM, SW-SW		Proj. Manager <b>ZNB</b>		
Washington County, Colorado		Drawing Date <b>12.7.2018</b>		
			PLS Group 6843 North Franklin Avenue Loveland, Colorado 80538 970.669.2100 office - 970.669.3652 fax	