



December 11, 2018

Oil and Gas Conservation Commission
The Chancery Building
Attn: Julie Murphy, Director
1120 Lincoln St., Suite 801
Denver, CO 80203

Re: Rule 318A.e 30-Day Notice Certification Letter
HDI KF 10-6H
Township 1 North, Range 65 West, 6th P.M.
Section 10: SESE (SHL Location)
Weld County, Colorado

Dear Ms. Murphy,

Verdad Resources LLC (Verdad) hereby certifies to the Director that a thirty (30-day) notice has been given by certified mail to all mineral interest owners in the proposed spacing unit for the well identified below. We have not received any objections to this well location or proposed spacing unit.

Well Name / Number	Form 2 Doc #	TPZ Footages (T1N-R65W-Sec.10)	BHL Footages (T1N-R65W-Sec.3)	Proposed Spacing Unit Configuration
HDI KF 10-6H	401571748	460' FSL, 1366' FEL	2340' FNL, 1366' FEL	T1N-R65W-Sec.3: SE/4, S2NE; Sec.10: E2 (560 acres)

Verdad hereby requests the Director to approve the proposed wells. If you should have any questions or concerns regarding this request, please contact me at 214-838-2775 or rowe@verdadoil.com

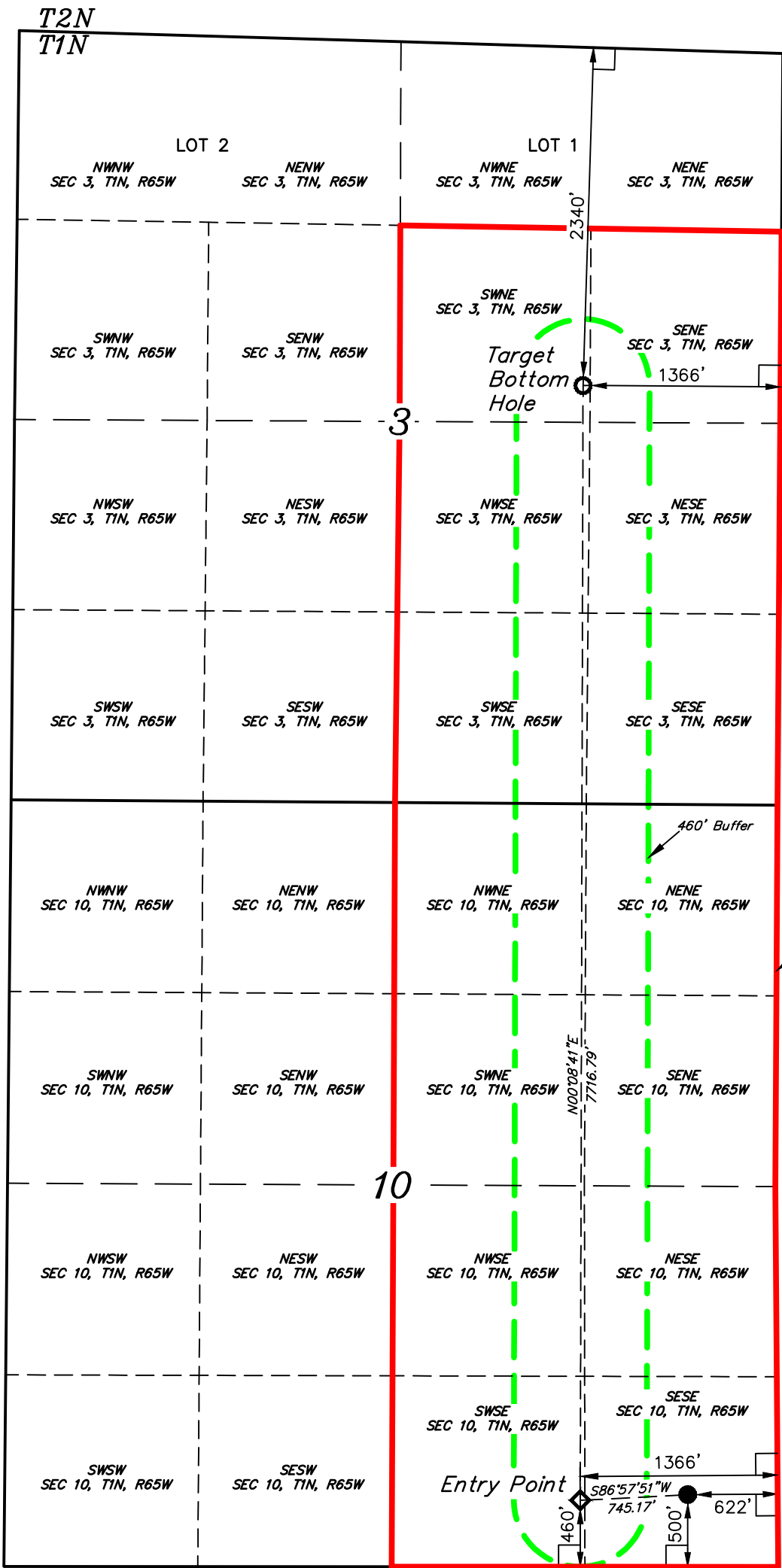
Sincerely,

A handwritten signature in blue ink that reads "Rick Rowe".

Rick Rowe
Land Manager

- LEGEND:
- = 90° SYMBOL
 - = PROPOSED WELLHEAD.
 - = ENTRY POINT.
 - = TARGET BOTTOM HOLE.

T1N, R65W, 6th P.M.



HDI KF 10-6H
Elev. Ungraded
Ground = 5012.9'

PDOP = 1.3



NAD 83 (SURFACE LOCATION)	NAD 83 (ENTRY POINT)	NAD 83 (TARGET BOTTOM HOLE)
LATITUDE = 40°03'36.38" (40.060105)	LATITUDE = 40°03'35.99" (40.059997)	LATITUDE = 40°04'52.23" (40.081175)
LONGITUDE = 104°38'33.76" (104.642712)	LONGITUDE = 104°38'43.33" (104.645370)	LONGITUDE = 104°38'43.08" (104.645299)
NAD 27 (SURFACE LOCATION)	NAD 27 (ENTRY POINT)	NAD 27 (TARGET BOTTOM HOLE)
LATITUDE = 40°03'36.44" (40.060122)	LATITUDE = 40°03'36.05" (40.060014)	LATITUDE = 40°04'52.29" (40.081192)
LONGITUDE = 104°38'31.89" (104.642192)	LONGITUDE = 104°38'41.46" (104.644850)	LONGITUDE = 104°38'41.20" (104.644779)
STATE PLANE NAD 83 (CO. NORTH)	STATE PLANE NAD 83 (CO. NORTH)	STATE PLANE NAD 83 (CO. NORTH)
N: 1265901.46 E: 3239956.88	N: 1265854.88 E: 3239213.38	N: 1273569.34 E: 3239158.91
STATE PLANE NAD 27 (CO. NORTH)	STATE PLANE NAD 27 (CO. NORTH)	STATE PLANE NAD 27 (CO. NORTH)
N: 265904.22 E: 2240108.68	N: 265857.63 E: 2239365.19	N: 273572.01 E: 2239310.65

CERTIFICATE

THIS IS TO CERTIFY THAT THE ABOVE DATA WAS PREPARED FROM FIELD NOTES OF ACTUAL SURVEYS MADE BY ME OR UNDER MY SUPERVISION, AND THAT THE SAME ARE TRUE AND CORRECT TO THE BEST OF MY KNOWLEDGE AND BELIEF.

REGISTERED LAND SURVEYOR
REGISTRATION NO. 28285
STATE OF COLORADO

BASIS OF BEARINGS
BASIS OF BEARINGS IS A G.P.S. OBSERVATION

BASIS OF ELEVATION
USGS COOPERATIVE BASE NETWORK CONTROL STATION, DESIGNATION "HUDSON CC".
NGS DATA SHEET LISTS THE NAVD 88 ELEVATION AS BEING 4999 FEET.



UELS, LLC
Corporate Office * 85 South 200 East
Vernal, UT 84078 * (435) 789-1017



VERDAD RESOURCES LLC

HDI KF 10-6H
SE 1/4 SE 1/4, SECTION 10, T1N, R65W, 6th P.M.
WELD COUNTY, COLORADO

SURVEYED BY	GREG WEIMER	10-30-17	SCALE
DRAWN BY	K.B.	12-11-18	1" = 1000'

WELLBORE SPACING UNIT