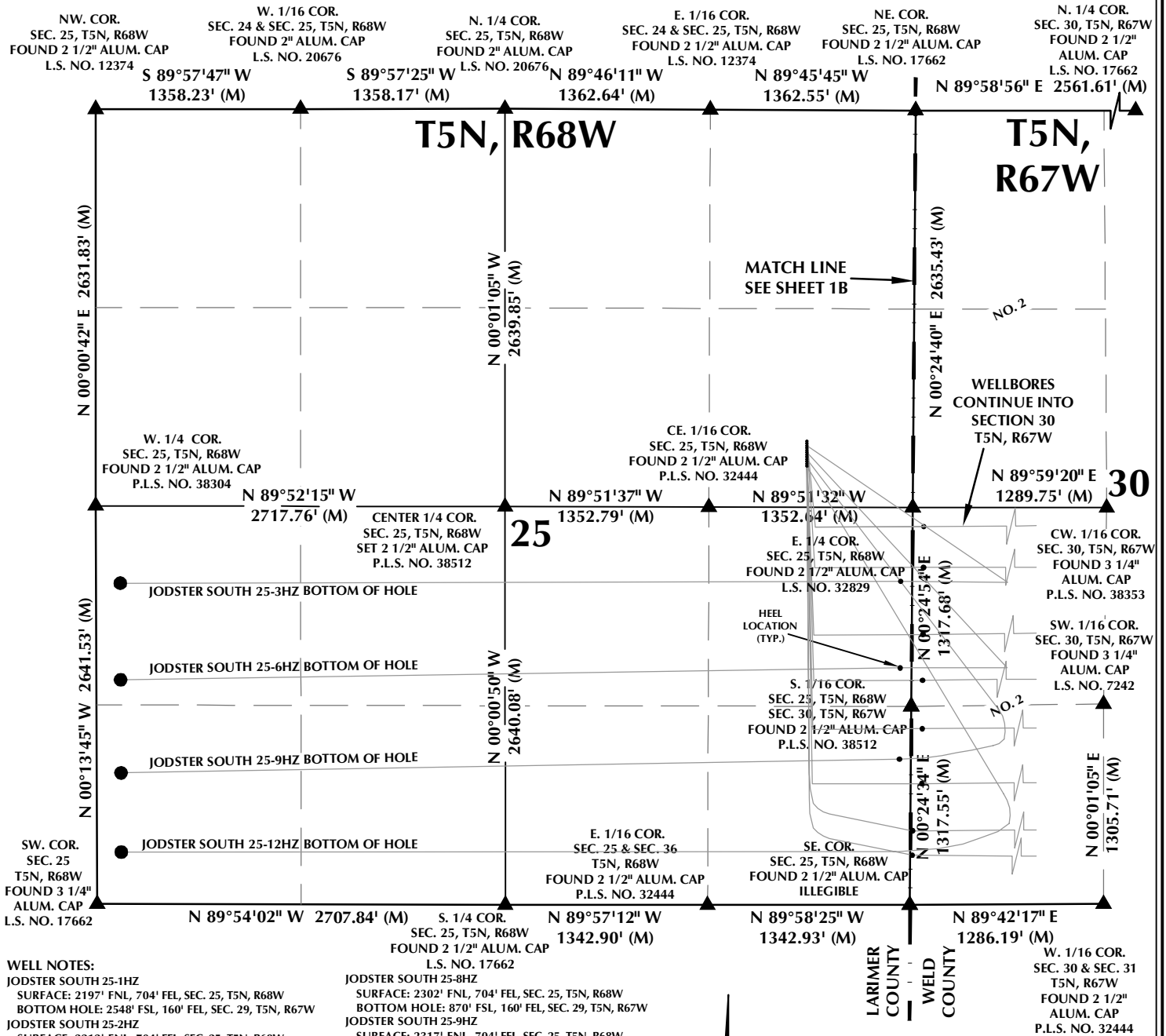


MULTI-WELL PLAN SECTIONS 25, T5N, R68W & 30, T5N, R67W



NOTES:

- INDICATES SECTION CORNER.
- INDICATES CALCULATED CORNER.
- BASIS OF BEARING DERIVED FROM COLORADO COORDINATE SYSTEM OF 1983 NORTH ZONE.
- ALL MEASURED DISTANCES ARE GRID.
- COMBINED SCALE FACTOR: .99972964 CALCULATED FROM THE E. 1/4 CORNER OF SECTION 25, T5N, R68W.
- WELL FOOTAGES ARE MEASURED AT RIGHT ANGLES TO THE SECTION LINES.
- NO. 2 AS SHOWN HEREON IS GOVERNMENT LOT 2 PER THE ORIGINAL GLO SURVEY.

WELL PAD - JODSTER SOUTH 24-25HZ

MULTI-WELL PLAN
JODSTER SOUTH 25-1HZ, JODSTER SOUTH 25-2HZ,
JODSTER SOUTH 25-3HZ, JODSTER SOUTH 25-4HZ, JODSTER SOUTH 25-5HZ,
JODSTER SOUTH 25-6HZ, JODSTER SOUTH 25-7HZ, JODSTER SOUTH 25-8HZ,
JODSTER SOUTH 25-9HZ, JODSTER SOUTH 25-10HZ,
JODSTER SOUTH 25-11HZ & JODSTER SOUTH 25-12HZ
LOCATED IN SECTION 25, T5N, R68W, 6TH P.M.
LARIMER COUNTY, COLORADO &
LOCATED IN SECTIONS 29 & 30, T5N, R67W, 6TH P.M.
WELD COUNTY, COLORADO

**Kerr-McGee Oil &
Gas Onshore L.P.**
1099 18th Street
Denver, Colorado 80202



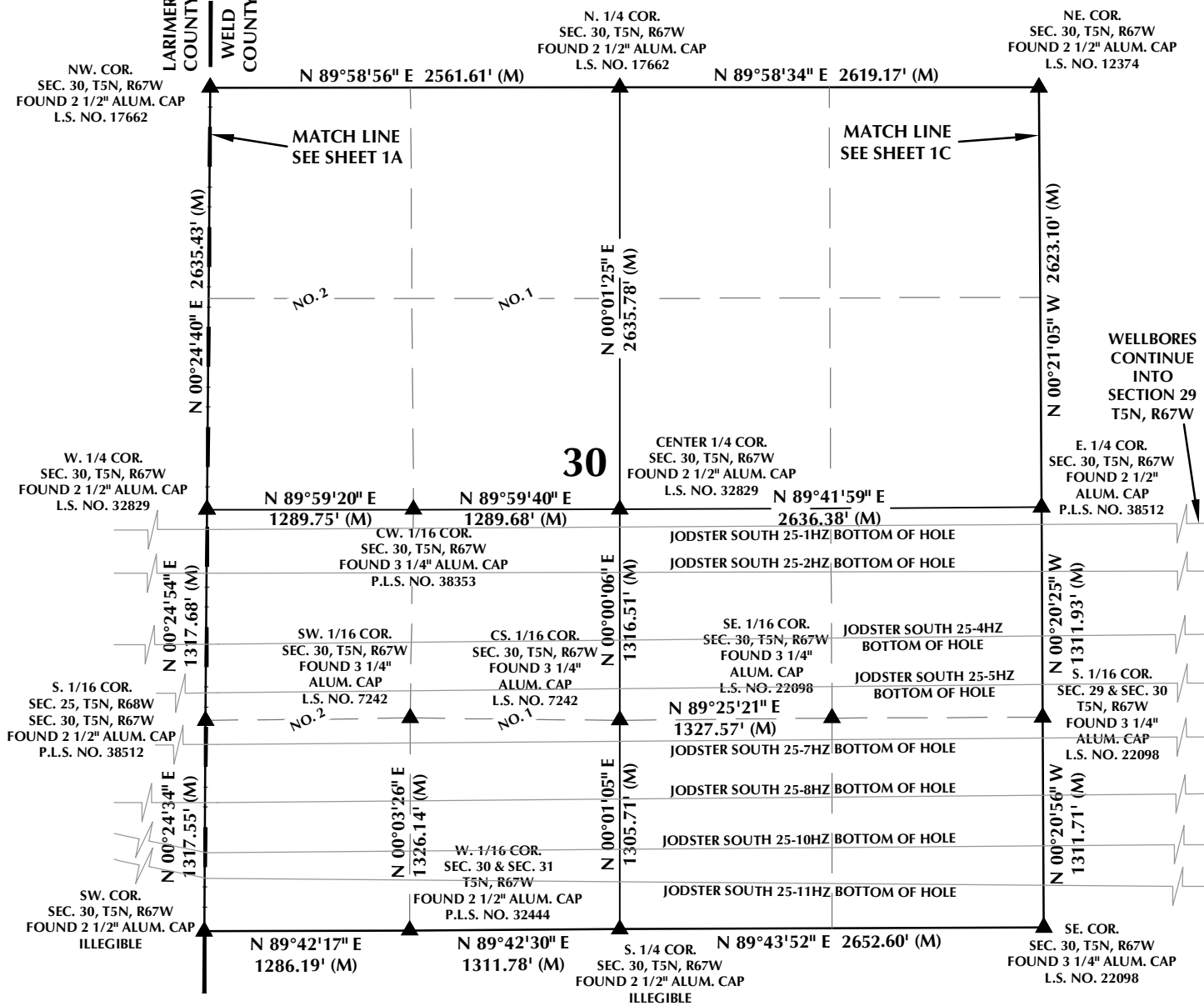
CONSULTING, LLC

SHERIDAN OFFICE
1095 Saberton Avenue
Sheridan, Wyoming 82801
Phone 307-674-0609

LOVELAND OFFICE
6706 North Franklin Avenue
Loveland, Colorado 80538
Phone 970-776-4331

DRAFTED BY:	LMO	CHECKED BY:	RKF	SHEET NO:
DATE DRAFTED:	9/21/18	DATE SURVEYED:	9/3/18	1A
REVISED:		FILE NAME:	16-95	1A OF 1

MULTI-WELL PLAN SECTION 30, T5N, R67W



WELL NOTES:

JODSTER SOUTH 25-1HZ
SURFACE: 2197' FNL, 704' FEL, SEC. 25, T5N, R68W
BOTTOM HOLE: 2548' FSL, 160' FEL, SEC. 29, T5N, R67W

JODSTER SOUTH 25-2HZ
SURFACE: 2212' FNL, 704' FEL, SEC. 25, T5N, R68W
BOTTOM HOLE: 2232' FSL, 160' FEL, SEC. 29, T5N, R67W

JODSTER SOUTH 25-3HZ
SURFACE: 2227' FNL, 704' FEL, SEC. 25, T5N, R68W
BOTTOM HOLE: 2128' FSL, 160' FWL, SEC. 25, T5N, R68W

JODSTER SOUTH 25-4HZ
SURFACE: 2242' FNL, 704' FEL, SEC. 25, T5N, R68W
BOTTOM HOLE: 1870' FSL, 160' FEL, SEC. 29, T5N, R67W

JODSTER SOUTH 25-5HZ
SURFACE: 2257' FNL, 704' FEL, SEC. 25, T5N, R68W
BOTTOM HOLE: 1566' FSL, 160' FEL, SEC. 29, T5N, R67W

JODSTER SOUTH 25-6HZ
SURFACE: 2272' FNL, 704' FEL, SEC. 25, T5N, R68W
BOTTOM HOLE: 1487' FSL, 160' FWL, SEC. 25, T5N, R68W

JODSTER SOUTH 25-7HZ
SURFACE: 2287' FNL, 704' FEL, SEC. 25, T5N, R68W
BOTTOM HOLE: 1220' FSL, 160' FEL, SEC. 29, T5N, R67W

JODSTER SOUTH 25-8HZ

SURFACE: 2302' FNL, 704' FEL, SEC. 25, T5N, R68W
BOTTOM HOLE: 870' FSL, 160' FEL, SEC. 29, T5N, R67W

JODSTER SOUTH 25-9HZ
SURFACE: 2317' FNL, 704' FEL, SEC. 25, T5N, R68W
BOTTOM HOLE: 870' FSL, 160' FWL, SEC. 25, T5N, R68W

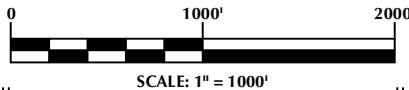
JODSTER SOUTH 25-10HZ
SURFACE: 2332' FNL, 704' FEL, SEC. 25, T5N, R68W
BOTTOM HOLE: 548' FSL, 160' FEL, SEC. 29, T5N, R67W

JODSTER SOUTH 25-11HZ
SURFACE: 2347' FNL, 704' FEL, SEC. 25, T5N, R68W
BOTTOM HOLE: 222' FSL, 161' FEL, SEC. 29, T5N, R67W

JODSTER SOUTH 25-12HZ
SURFACE: 2362' FNL, 704' FEL, SEC. 25, T5N, R68W
BOTTOM HOLE: 344' FSL, 160' FWL, SEC. 25, T5N, R68W

NOTES:

- ▲ INDICATES SECTION CORNER.
- INDICATES CALCULATED CORNER.
- BASIS OF BEARING DERIVED FROM COLORADO COORDINATE SYSTEM OF 1983 NORTH ZONE.
- ALL MEASURED DISTANCES ARE GRID.
- COMBINED SCALE FACTOR: .99972964 CALCULATED FROM THE E. 1/4 CORNER OF SECTION 25, T5N, R68W.
- WELL FOOTAGES ARE MEASURED AT RIGHT ANGLES TO THE SECTION LINES.
- NO. 1 & NO. 2 AS SHOWN HEREON ARE GOVERNMENT LOTS 1 & 2 PER THE ORIGINAL GLO SURVEY.

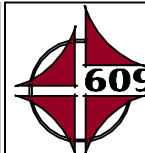


WELL PAD - JODSTER SOUTH 24-25HZ

MULTI-WELL PLAN
JODSTER SOUTH 25-1HZ, JODSTER SOUTH 25-2HZ,
JODSTER SOUTH 25-3HZ, JODSTER SOUTH 25-4HZ, JODSTER SOUTH 25-5HZ,
JODSTER SOUTH 25-6HZ, JODSTER SOUTH 25-7HZ, JODSTER SOUTH 25-8HZ,
JODSTER SOUTH 25-9HZ, JODSTER SOUTH 25-10HZ,
JODSTER SOUTH 25-11HZ & JODSTER SOUTH 25-12HZ
LOCATED IN SECTION 25, T5N, R68W, 6TH P.M.
LARIMER COUNTY, COLORADO &
LOCATED IN SECTIONS 29 & 30, T5N, R67W, 6TH P.M.
WELD COUNTY, COLORADO

**Kerr-McGee Oil &
Gas Onshore L.P.**

1099 18th Street
Denver, Colorado 80202



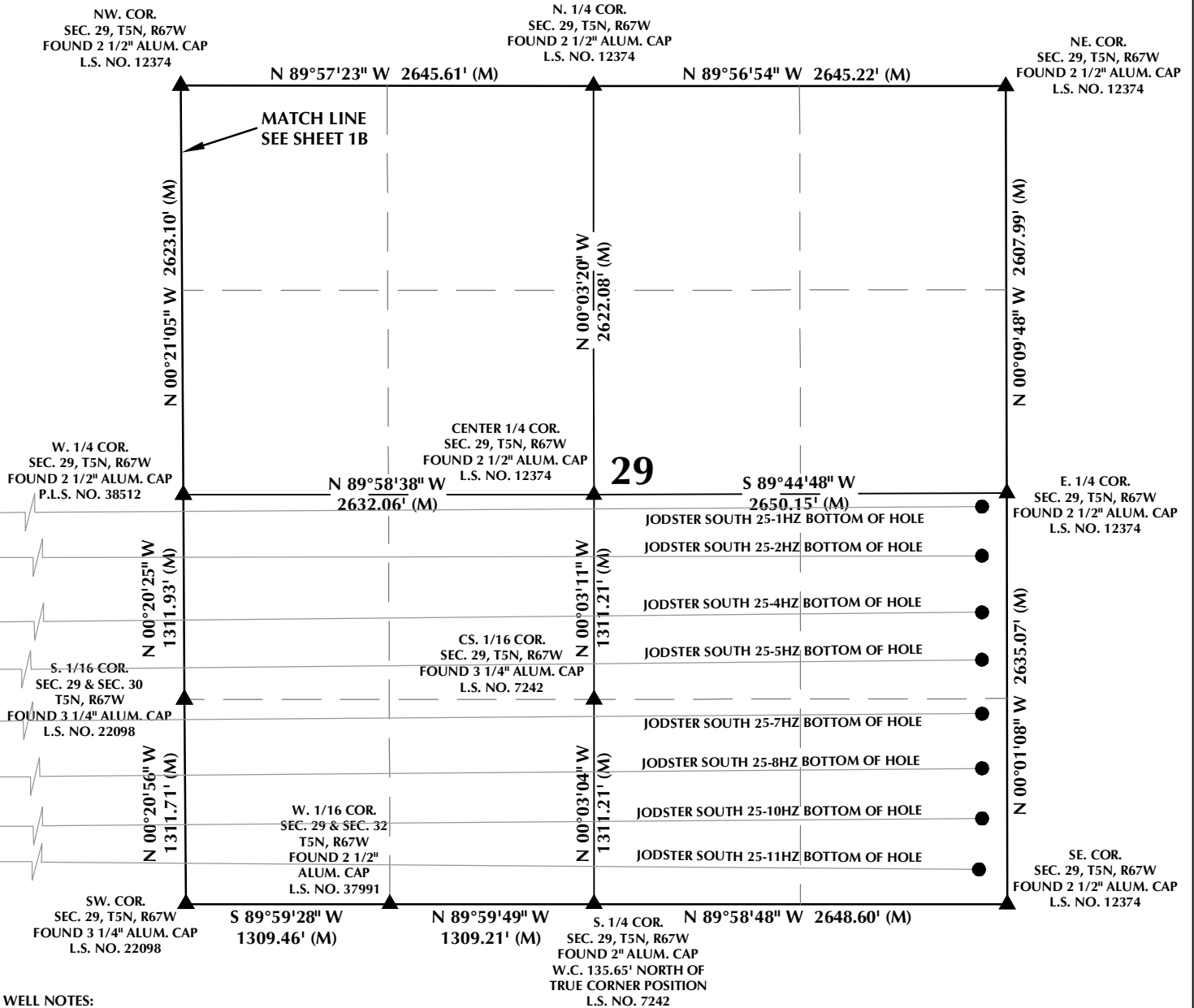
CONSULTING, LLC

SHERIDAN OFFICE
1095 Saberton Avenue
Sheridan, Wyoming 82801
Phone 307-674-0609

LOVELAND OFFICE
6706 North Franklin Avenue
Loveland, Colorado 80538
Phone 970-776-4331

DRAFTED BY:	LMO	CHECKED BY:	RKF	SHEET NO:
DATE DRAFTED:	9/21/18	DATE SURVEYED:	9/3/18	1B
REVISED:		FILE NAME:	16-95	1B OF 1

MULTI-WELL PLAN SECTION 29, T5N, R67W



WELL NOTES:

JODSTER SOUTH 25-1HZ
SURFACE: 2197' FNL, 704' FEL, SEC. 25, T5N, R68W
BOTTOM HOLE: 2548' FSL, 160' FEL, SEC. 29, T5N, R67W

JODSTER SOUTH 25-2HZ
SURFACE: 2212' FNL, 704' FEL, SEC. 25, T5N, R68W
BOTTOM HOLE: 2232' FSL, 160' FEL, SEC. 29, T5N, R67W

JODSTER SOUTH 25-3HZ
SURFACE: 2227' FNL, 704' FEL, SEC. 25, T5N, R68W
BOTTOM HOLE: 2128' FSL, 160' FWL, SEC. 25, T5N, R68W

JODSTER SOUTH 25-4HZ
SURFACE: 2242' FNL, 704' FEL, SEC. 25, T5N, R68W
BOTTOM HOLE: 1870' FSL, 160' FEL, SEC. 29, T5N, R67W

JODSTER SOUTH 25-5HZ
SURFACE: 2257' FNL, 704' FEL, SEC. 25, T5N, R68W
BOTTOM HOLE: 1566' FSL, 160' FEL, SEC. 29, T5N, R67W

JODSTER SOUTH 25-6HZ
SURFACE: 2272' FNL, 704' FEL, SEC. 25, T5N, R68W
BOTTOM HOLE: 1487' FSL, 160' FWL, SEC. 25, T5N, R68W

JODSTER SOUTH 25-7HZ
SURFACE: 2287' FNL, 704' FEL, SEC. 25, T5N, R68W
BOTTOM HOLE: 1220' FSL, 160' FEL, SEC. 29, T5N, R67W

JODSTER SOUTH 25-8HZ
SURFACE: 2302' FNL, 704' FEL, SEC. 25, T5N, R68W
BOTTOM HOLE: 870' FSL, 160' FEL, SEC. 29, T5N, R67W

JODSTER SOUTH 25-9HZ
SURFACE: 2317' FNL, 704' FEL, SEC. 25, T5N, R68W
BOTTOM HOLE: 870' FSL, 160' FWL, SEC. 25, T5N, R68W

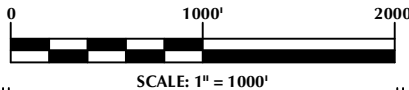
JODSTER SOUTH 25-10HZ
SURFACE: 2332' FNL, 704' FEL, SEC. 25, T5N, R68W
BOTTOM HOLE: 548' FSL, 160' FEL, SEC. 29, T5N, R67W

JODSTER SOUTH 25-11HZ
SURFACE: 2347' FNL, 704' FEL, SEC. 25, T5N, R68W
BOTTOM HOLE: 222' FSL, 161' FEL, SEC. 29, T5N, R67W

JODSTER SOUTH 25-12HZ
SURFACE: 2362' FNL, 704' FEL, SEC. 25, T5N, R68W
BOTTOM HOLE: 344' FSL, 160' FWL, SEC. 25, T5N, R68W

NOTES:

- ▲ INDICATES SECTION CORNER.
- INDICATES CALCULATED CORNER.
- BASIS OF BEARING DERIVED FROM COLORADO COORDINATE SYSTEM OF 1983 NORTH ZONE.
- ALL MEASURED DISTANCES ARE GRID.
- COMBINED SCALE FACTOR: .99972964 CALCULATED FROM THE E. 1/4 CORNER OF SECTION 25, T5N, R68W.
- WELL FOOTAGES ARE MEASURED AT RIGHT ANGLES TO THE SECTION LINES.

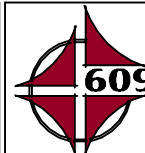


WELL PAD - JODSTER SOUTH 24-25HZ

MULTI-WELL PLAN
JODSTER SOUTH 25-1HZ, JODSTER SOUTH 25-2HZ,
JODSTER SOUTH 25-3HZ, JODSTER SOUTH 25-4HZ, JODSTER SOUTH 25-5HZ,
JODSTER SOUTH 25-6HZ, JODSTER SOUTH 25-7HZ, JODSTER SOUTH 25-8HZ,
JODSTER SOUTH 25-9HZ, JODSTER SOUTH 25-10HZ,
JODSTER SOUTH 25-11HZ & JODSTER SOUTH 25-12HZ
LOCATED IN SECTION 25, T5N, R68W, 6TH P.M.
LARIMER COUNTY, COLORADO &
LOCATED IN SECTIONS 29 & 30, T5N, R67W, 6TH P.M.
WELD COUNTY, COLORADO

**Kerr-McGee Oil &
Gas Onshore L.P.**

1099 18th Street
Denver, Colorado 80202



CONSULTING, LLC

SHERIDAN OFFICE
1095 Saberton Avenue
Sheridan, Wyoming 82801
Phone 307-674-0609

LOVELAND OFFICE
6706 North Franklin Avenue
Loveland, Colorado 80538
Phone 970-776-4331



DRAFTED BY:	LMO	CHECKED BY:	RKF	SHEET NO:
DATE DRAFTED:	9/21/18	DATE SURVEYED:	9/3/18	1C
REVISED:		FILE NAME:	16-95	1C OF 1

[illegible]

JODSTER NORTH 25-1HZ
SURFACE: 1518' FNL, 1092' FEL, SEC. 25, T5N, R68W
BOTTOM HOLE: 235' FNL, 160' FWL, SEC. 25, T5N, R68W
JODSTER NORTH 25-2HZ
SURFACE: 1533' FNL, 1092' FEL, SEC. 25, T5N, R68W
BOTTOM HOLE: 235' FNL, 160' FEL, SEC. 29, T5N, R67W
JODSTER NORTH 25-3HZ
SURFACE: 1548' FNL, 1092' FEL, SEC. 25, T5N, R68W
BOTTOM HOLE: 420' FNL, 160' FEL, SEC. 29, T5N, R67W
JODSTER NORTH 25-4HZ
SURFACE: 1563' FNL, 1092' FEL, SEC. 25, T5N, R68W
BOTTOM HOLE: 705' FNL, 160' FWL, SEC. 25, T5N, R68W
JODSTER NORTH 25-5HZ
SURFACE: 1578' FNL, 1092' FEL, SEC. 25, T5N, R68W
BOTTOM HOLE: 735' FNL, 160' FEL, SEC. 29, T5N, R67W
JODSTER NORTH 25-6HZ
SURFACE: 1593' FNL, 1092' FEL, SEC. 25, T5N, R68W
BOTTOM HOLE: 1074' FNL, 161' FEL, SEC. 29, T5N, R67W
JODSTER NORTH 25-7HZ
SURFACE: 1608' FNL, 1091' FEL, SEC. 25, T5N, R68W
BOTTOM HOLE: 1295' FNL, 160' FWL, SEC. 25, T5N, R68W

JODSTER NORTH 25-8HZ
SURFACE: 1623' FNL, 1091' FEL, SEC. 25, T5N, R68W
BOTTOM HOLE: 1345' FNL, 160' FEL, SEC. 29, T5N, R67W
JODSTER NORTH 25-9HZ
SURFACE: 1638' FNL, 1091' FEL, SEC. 25, T5N, R68W
BOTTOM HOLE: 1678' FNL, 160' FEL, SEC. 29, T5N, R67W
JODSTER NORTH 25-10HZ
SURFACE: 1653' FNL, 1091' FEL, SEC. 25, T5N, R68W
BOTTOM HOLE: 1912' FNL, 160' FWL, SEC. 25, T5N, R68W
JODSTER NORTH 25-11HZ
SURFACE: 1668' FNL, 1091' FEL, SEC. 25, T5N, R68W
BOTTOM HOLE: 2017' FNL, 160' FEL, SEC. 29, T5N, R67W
JODSTER NORTH 25-12HZ
SURFACE: 1683' FNL, 1091' FEL, SEC. 25, T5N, R68W
BOTTOM HOLE: 2378' FNL, 160' FEL, SEC. 29, T5N, R67W
JODSTER NORTH 25-13HZ
SURFACE: 1698' FNL, 1091' FEL, SEC. 25, T5N, R68W
BOTTOM HOLE: 2556' FNL, 160' FWL, SEC. 25, T5N, R68W



1.  INDICATES SECTION CORNER.
2.  INDICATES CALCULATED CORNER.
3. BASIS OF BEARING DERIVED FROM COLORADO COORDINATE SYSTEM OF 1983 NORTH ZONE.
4. ALL MEASURED DISTANCES ARE GRID.
COMBINED SCALE FACTOR: .99972964 CALCULATED FROM THE E. 1/4 CORNER OF SECTION 25, T5N, R68W.
5. WELL FOOTAGES ARE MEASURED AT RIGHT ANGLES TO THE SECTION LINES.
6. NO. 2 AS SHOWN HEREON IS GOVERNMENT LOT 2 PER THE ORIGINAL GLO SURVEY.

MULTI-WELL PLAN
 JODSTER NORTH 25-1HZ, JODSTER NORTH 25-2HZ, JODSTER NORTH 25-3HZ,
 JODSTER NORTH 25-4HZ, JODSTER NORTH 25-5HZ, JODSTER NORTH 25-6HZ,
 JODSTER NORTH 25-7HZ, JODSTER NORTH 25-8HZ, JODSTER NORTH 25-9HZ,
 JODSTER NORTH 25-10HZ, JODSTER NORTH 25-11HZ,
 JODSTER NORTH 25-12HZ & JODSTER NORTH 25-13HZ
 LOCATED IN SECTION 25, T5N, R68W, 6TH P.M.
 LARIMER COUNTY, COLORADO &
 LOCATED IN SECTIONS 29 & 30, T5N, R67W, 6TH P.M.
 WELD COUNTY, COLORADO

SHERIDAN OFFICE
1095 Saberton Avenue
Sheridan, Wyoming 82801
Phone 307-674-0609

LOVELAND OFFICE
6706 North Franklin Avenue
Loveland, Colorado 80538
Phone 970-776-4331

DRAFTED BY: LMO	CHECKED BY: RKF	SHEET NO: 1A 1A OF 1
DATE DRAFTED: 9/20/18	DATE SURVEYED: 9/3/18	
REVISED:	FILE NAME: 16-95	

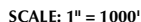
LARIMER COUNTY
—
WELD COUNTY



JODSTER NORTH 25-8HZ
SURFACE: 1623' FNL, 1091' FEL, SEC. 25, T5N, R68W
BOTTOM HOLE: 1345' FNL, 160' FEL, SEC. 29, T5N, R67W
JODSTER NORTH 25-9HZ
SURFACE: 1638' FNL, 1091' FEL, SEC. 25, T5N, R68W
BOTTOM HOLE: 1678' FNL, 160' FEL, SEC. 29, T5N, R67W
JODSTER NORTH 25-10HZ
SURFACE: 1653' FNL, 1091' FEL, SEC. 25, T5N, R68W
BOTTOM HOLE: 1912' FNL, 160' FWL, SEC. 25, T5N, R68W
JODSTER NORTH 25-11HZ
SURFACE: 1668' FNL, 1091' FEL, SEC. 25, T5N, R68W
BOTTOM HOLE: 2017' FNL, 160' FEL, SEC. 29, T5N, R67W
JODSTER NORTH 25-12HZ
SURFACE: 1683' FNL, 1091' FEL, SEC. 25, T5N, R68W
BOTTOM HOLE: 2378' FNL, 160' FEL, SEC. 29, T5N, R67W
JODSTER NORTH 25-13HZ
SURFACE: 1698' FNL, 1091' FEL, SEC. 25, T5N, R68W
BOTTOM HOLE: 2556' FNL, 160' FWL, SEC. 25, T5N, R68W

NOTES:

1. ▲ INDICATES SECTION CORNER.
2. ● INDICATES CALCULATED CORNER.
3. BASIS OF BEARING DERIVED FROM COLORADO COORDINATE SYSTEM OF 1983 NORTH ZONE.
4. ALL MEASURED DISTANCES ARE GRID.
COMBINED SCALE FACTOR: .99972964 CALCULATED FROM THE E. 1/4 CORNER OF SECTION 25, T5N, R68W.
5. WELL FOOTAGES ARE MEASURED AT RIGHT ANGLES TO THE SECTION LINES.
6. NO. 1 & NO. 2 AS SHOWN HEREON ARE GOVERNMENT LOTS 1 & 2 PER THE ORIGINAL GLO SURVEY.



MULTI-WELL PLAN
 JODSTER NORTH 25-1HZ, JODSTER NORTH 25-2HZ, JODSTER NORTH 25-3HZ,
 JODSTER NORTH 25-4HZ, JODSTER NORTH 25-5HZ, JODSTER NORTH 25-6HZ,
 JODSTER NORTH 25-7HZ, JODSTER NORTH 25-8HZ, JODSTER NORTH 25-9HZ,
 JODSTER NORTH 25-10HZ, JODSTER NORTH 25-11HZ,
 JODSTER NORTH 25-12HZ & JODSTER NORTH 25-13HZ
 LOCATED IN SECTION 25, T5N, R68W, 6TH P.M.
 LARIMER COUNTY, COLORADO &
 LOCATED IN SECTIONS 29 & 30, T5N, R67W, 6TH P.M.
 WELD COUNTY, COLORADO

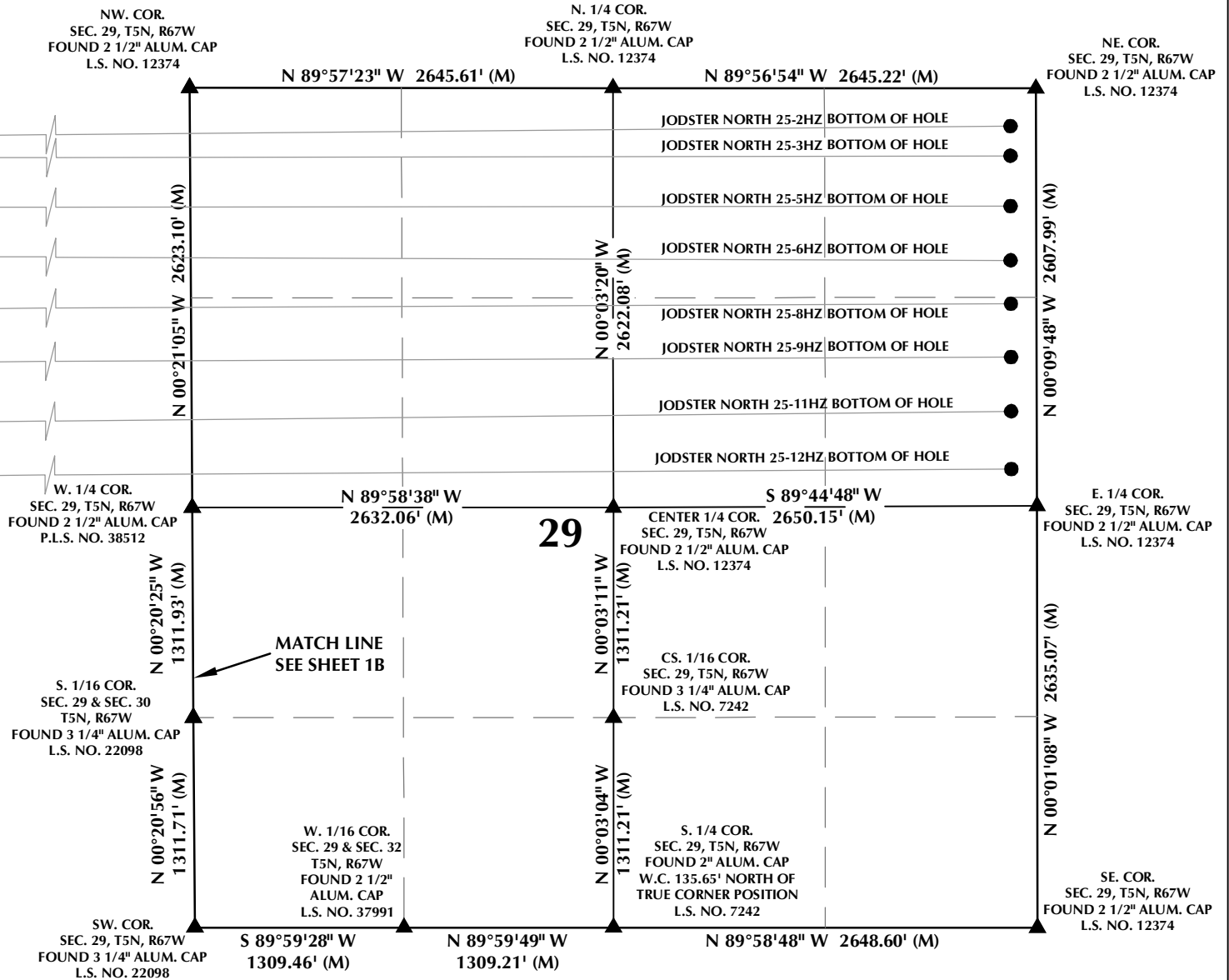
SHERIDAN OFFICE
1095 Saberton Avenue
Sheridan, Wyoming 82801
Phone 307-674-0609

LOVELAND OFFICE
6706 North Franklin Avenue
Loveland, Colorado 80538
Phone 970-776-4331

DRAFTED BY: LMO	CHECKED BY: RKF
DATE DRAFTED: 9/20/18	DATE SURVEYED: 9/3/18
REVISED:	FILE NAME: 16-95

SHEET NO:
1 B
1B OF 1

MULTI-WELL PLAN SECTION 29, T5N, R67W



WELL NOTES:

JODSTER NORTH 25-1HZ
SURFACE: 1518' FNL, 1092' FEL, SEC. 25, T5N, R68W
BOTTOM HOLE: 235' FNL, 160' FWL, SEC. 25, T5N, R68W

JODSTER NORTH 25-2HZ
SURFACE: 1533' FNL, 1092' FEL, SEC. 25, T5N, R68W
BOTTOM HOLE: 235' FNL, 160' FWL, SEC. 29, T5N, R67W

JODSTER NORTH 25-3HZ
SURFACE: 1548' FNL, 1092' FEL, SEC. 25, T5N, R68W
BOTTOM HOLE: 420' FNL, 160' FWL, SEC. 29, T5N, R67W

JODSTER NORTH 25-4HZ
SURFACE: 1563' FNL, 1092' FEL, SEC. 25, T5N, R68W
BOTTOM HOLE: 705' FNL, 160' FWL, SEC. 25, T5N, R68W

JODSTER NORTH 25-5HZ
SURFACE: 1578' FNL, 1092' FEL, SEC. 25, T5N, R68W
BOTTOM HOLE: 735' FNL, 160' FWL, SEC. 29, T5N, R67W

JODSTER NORTH 25-6HZ
SURFACE: 1593' FNL, 1092' FEL, SEC. 25, T5N, R68W
BOTTOM HOLE: 1074' FNL, 161' FWL, SEC. 29, T5N, R67W

JODSTER NORTH 25-7HZ
SURFACE: 1608' FNL, 1091' FEL, SEC. 25, T5N, R68W
BOTTOM HOLE: 1295' FNL, 160' FWL, SEC. 25, T5N, R68W

JODSTER NORTH 25-8HZ
SURFACE: 1623' FNL, 1091' FEL, SEC. 25, T5N, R68W
BOTTOM HOLE: 1345' FNL, 160' FWL, SEC. 29, T5N, R67W

JODSTER NORTH 25-9HZ
SURFACE: 1638' FNL, 1091' FEL, SEC. 25, T5N, R68W
BOTTOM HOLE: 1678' FNL, 160' FWL, SEC. 29, T5N, R67W

JODSTER NORTH 25-10HZ
SURFACE: 1653' FNL, 1091' FEL, SEC. 25, T5N, R68W
BOTTOM HOLE: 1912' FNL, 160' FWL, SEC. 25, T5N, R68W

JODSTER NORTH 25-11HZ
SURFACE: 1668' FNL, 1091' FEL, SEC. 25, T5N, R68W
BOTTOM HOLE: 2017' FNL, 160' FWL, SEC. 29, T5N, R67W

JODSTER NORTH 25-12HZ
SURFACE: 1683' FNL, 1091' FEL, SEC. 25, T5N, R68W
BOTTOM HOLE: 2378' FNL, 160' FWL, SEC. 29, T5N, R67W

JODSTER NORTH 25-13HZ
SURFACE: 1698' FNL, 1091' FEL, SEC. 25, T5N, R68W
BOTTOM HOLE: 2556' FNL, 160' FWL, SEC. 25, T5N, R68W

NOTES:

- ▲ INDICATES SECTION CORNER.
- INDICATES CALCULATED CORNER.
- BASIS OF BEARING DERIVED FROM COLORADO COORDINATE SYSTEM OF 1983 NORTH ZONE.
- ALL MEASURED DISTANCES ARE GRID.
- COMBINED SCALE FACTOR: .99972964 CALCULATED FROM THE E. 1/4 CORNER OF SECTION 25, T5N, R68W.
- WELL FOOTAGES ARE MEASURED AT RIGHT ANGLES TO THE SECTION LINES.



SCALE: 1" = 1000'

WELL PAD - JODSTER NORTH 8-25HZ

MULTI-WELL PLAN
JODSTER NORTH 25-1HZ, JODSTER NORTH 25-2HZ, JODSTER NORTH 25-3HZ,
JODSTER NORTH 25-4HZ, JODSTER NORTH 25-5HZ, JODSTER NORTH 25-6HZ,
JODSTER NORTH 25-7HZ, JODSTER NORTH 25-8HZ, JODSTER NORTH 25-9HZ,
JODSTER NORTH 25-10HZ, JODSTER NORTH 25-11HZ,
JODSTER NORTH 25-12HZ & JODSTER NORTH 25-13HZ
LOCATED IN SECTION 25, T5N, R68W, 6TH P.M.
LARIMER COUNTY, COLORADO &
LOCATED IN SECTIONS 29 & 30, T5N, R67W, 6TH P.M.
WELD COUNTY, COLORADO

**Kerr-McGee Oil &
Gas Onshore L.P.**
1099 18th Street
Denver, Colorado 80202



CONSULTING, LLC

SHERIDAN OFFICE
1095 Saberton Avenue
Sheridan, Wyoming 82801
Phone 307-674-0609

LOVELAND OFFICE
6706 North Franklin Avenue
Loveland, Colorado 80538
Phone 970-776-4331

DRAFTED BY:	LMO	CHECKED BY:	RKF	SHEET NO:
DATE DRAFTED:	9/20/18	DATE SURVEYED:	9/3/18	1C
REVISED:		FILE NAME:	16-95	1C OF 1