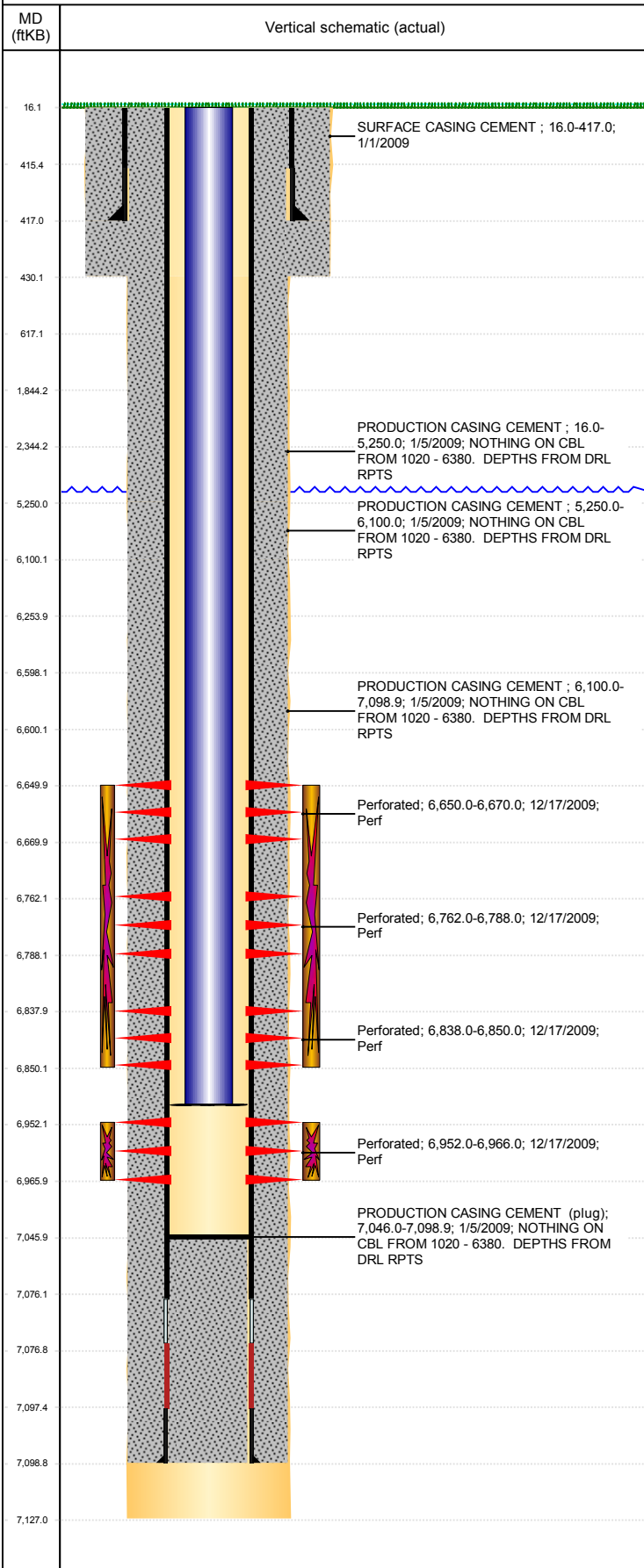


**Well Name: GWAA 03-15**

VERTICAL, ORIGINAL HOLE, 12/10/2018 3:42:37 PM



| Well Header                      |             |                           |             |                       |  |                              |                                    |                    |                                       |
|----------------------------------|-------------|---------------------------|-------------|-----------------------|--|------------------------------|------------------------------------|--------------------|---------------------------------------|
| API<br>05-123-26989              |             | Business Unit<br>DJ BASIN |             |                       | District<br>15                               |                              | Well Config<br>VERTICAL            |                    |                                       |
| KB - GL / MSL (ft...<br>16.00    |             | Spud Date<br>12/31/2008   |             | P & A Date            |  | Well Production Status<br>PR |                                    |                    | SoRT<br>No                            |
| Comment                          |             |                           |             |                       |  |                              |                                    |                    |                                       |
| Surface Location (Congressional) |             |                           |             |                       |  |                              |                                    |                    |                                       |
| Qtr 3<br>NE                      | Qtr 4<br>NE | Section<br>3              | Twnshp<br>5 | Twnsh...<br>N         | Range<br>65                                  | Rng E/...<br>W               | Actual Latitude (°)<br>40.43181000 |                    | Actual Longitude (°)<br>-104.64449000 |
| Wellbore Sections                |             |                           |             |                       |  |                              |                                    |                    |                                       |
| Section Des                      |             |                           | Size (in)   |                       |  | Act Top, MD (ftKB)           |                                    | Act Btm, MD (ftKB) |                                       |
| SURFACE                          |             |                           | 12 1/4      |                       |  | 16                           |                                    | 430                |                                       |
| PRODUCTION                       |             |                           | 7 7/8       |                       |  | 430                          |                                    | 7,127              |                                       |
| Casing Strings                   |             |                           |             |                       |  |                              |                                    |                    |                                       |
| Csg Des                          |             |                           | Run Date    |                       | OD (in)                                      | Wt/Len (lb/ft)               | Grade                              | Top, MD (ftKB)     | MD (ftKB)                             |
| Surface                          |             |                           | 1/1/2009    |                       | 8 5/8  | 24.00                        |                                    | 16.0               | 417.0                                 |
| Production                       |             |                           | 1/5/2009    |                       | 4 1/2  | 11.60                        | M-80                               | 16.0               | 7,098.9                               |
| Cement                           |             |                           |             |                       |  |                              |                                    |                    |                                       |
| Des                              |             |                           |             |                       | Start Date                                   |                              | Top (ftKB)                         |                    | Btm (ftKB)                            |
| SURFACE CASING CEMENT            |             |                           |             |                       | 1/1/2009                                     |                              | 16.0                               |                    | 417.0                                 |
| PRODUCTION CASING CEMENT         |             |                           |             |                       | 1/5/2009                                     |                              | 16.0                               |                    | 5,250.0                               |
| PRODUCTION CASING CEMENT         |             |                           |             |                       | 1/5/2009                                     |                              | 5,250.0                            |                    | 6,100.0                               |
| PRODUCTION CASING CEMENT         |             |                           |             |                       | 1/5/2009                                     |                              | 6,100.0                            |                    | 7,098.9                               |
| Zone Statuses                    |             |                           |             |                       |  |                              |                                    |                    |                                       |
| Zone Name                        |             | Status Date               | Status      | Fluid Type            | Job  |                              |                                    | Prod Method        |                                       |
| CODELL                           |             | 12/18/2009                | PR          |                       | DRILLING/COMPLETION - ORIGINAL, 12/31/200... |                              |                                    |                    |                                       |
| NIOBRARA                         |             | 12/18/2009                | PR          |                       | DRILLING/COMPLETION - ORIGINAL, 12/31/200... |                              |                                    |                    |                                       |
| Perforation Data                 |             |                           |             |                       |  |                              |                                    |                    |                                       |
| Linked Zone                      |             |                           | Bnch/Stg    | Entered Shot Total    | Top (ftKB)                                   |                              | Btm (ftKB)                         |                    | Date                                  |
| NIOBRARA, ORIGINAL HOLE          |             |                           | A           | 80                    | 6,650.00                                     |                              | 6,670.00                           |                    | 12/17/2009                            |
| NIOBRARA, ORIGINAL HOLE          |             |                           | B           | 104                   | 6,762.00                                     |                              | 6,788.00                           |                    | 12/17/2009                            |
| NIOBRARA, ORIGINAL HOLE          |             |                           | C           | 48                    | 6,838.00                                     |                              | 6,850.00                           |                    | 12/17/2009                            |
| CODELL, ORIGINAL HOLE            |             |                           |             | 56                    | 6,952.00                                     |                              | 6,966.00                           |                    | 12/17/2009                            |
| Stimulation Intervals            |             |                           |             |                       |  |                              |                                    |                    |                                       |
| Zone                             |             |                           |             | Start Date            |  | Top (ftKB)                   |                                    | Btm (ftKB)         |                                       |
| NIOBRARA, ORIGINAL HOLE          |             |                           |             | 12/18/2009            |  | 6,650.0                      |                                    | 6,850.0            |                                       |
| CODELL, ORIGINAL HOLE            |             |                           |             | 12/18/2009            |  | 6,952.0                      |                                    | 6,966.0            |                                       |
| Other In Hole                    |             |                           |             |                       |  |                              |                                    |                    |                                       |
| Run Date                         |             | Des                       |             |                       |  | OD (in)                      | Top (ftKB)                         |                    | Btm (ftKB)                            |
|                                  |             |                           |             |                       |  |                              |                                    |                    |                                       |
| Logs                             |             |                           |             |                       |  |                              |                                    |                    |                                       |
| Date                             |             | Type                      |             |                       |  | Top, MD (ftKB)               |                                    | Btm, MD (ftKB)     |                                       |
| 1/5/2009                         |             | COMPENSATED DENSITY       |             |                       |  | 3,480.0                      |                                    | 7,103.0            |                                       |
| 1/5/2009                         |             | INDUCTION                 |             |                       |  | 417.0                        |                                    | 7,123.0            |                                       |
| 2/18/2009                        |             | CBL/CCL/GR                |             |                       |  | 16.0                         |                                    | 7,044.0            |                                       |
| 12/30/2014                       |             | GYRO                      |             |                       |  | 10.0                         |                                    | 6,850.0            |                                       |
| Plug Back Total Depths           |             |                           |             |                       |  |                              |                                    |                    |                                       |
| Date                             |             | Type                      |             | Com                   |  |                              |                                    | Depth (ftKB)       |                                       |
| 2/18/2009                        |             | FILL                      |             | DEPTH LOGGER FROM CBL |  |                              |                                    | 7,046.0            |                                       |
| 2/12/2010                        |             | FILL                      |             | CLEAN OUT & LAND TBG  |  |                              |                                    | 7,046.0            |                                       |