

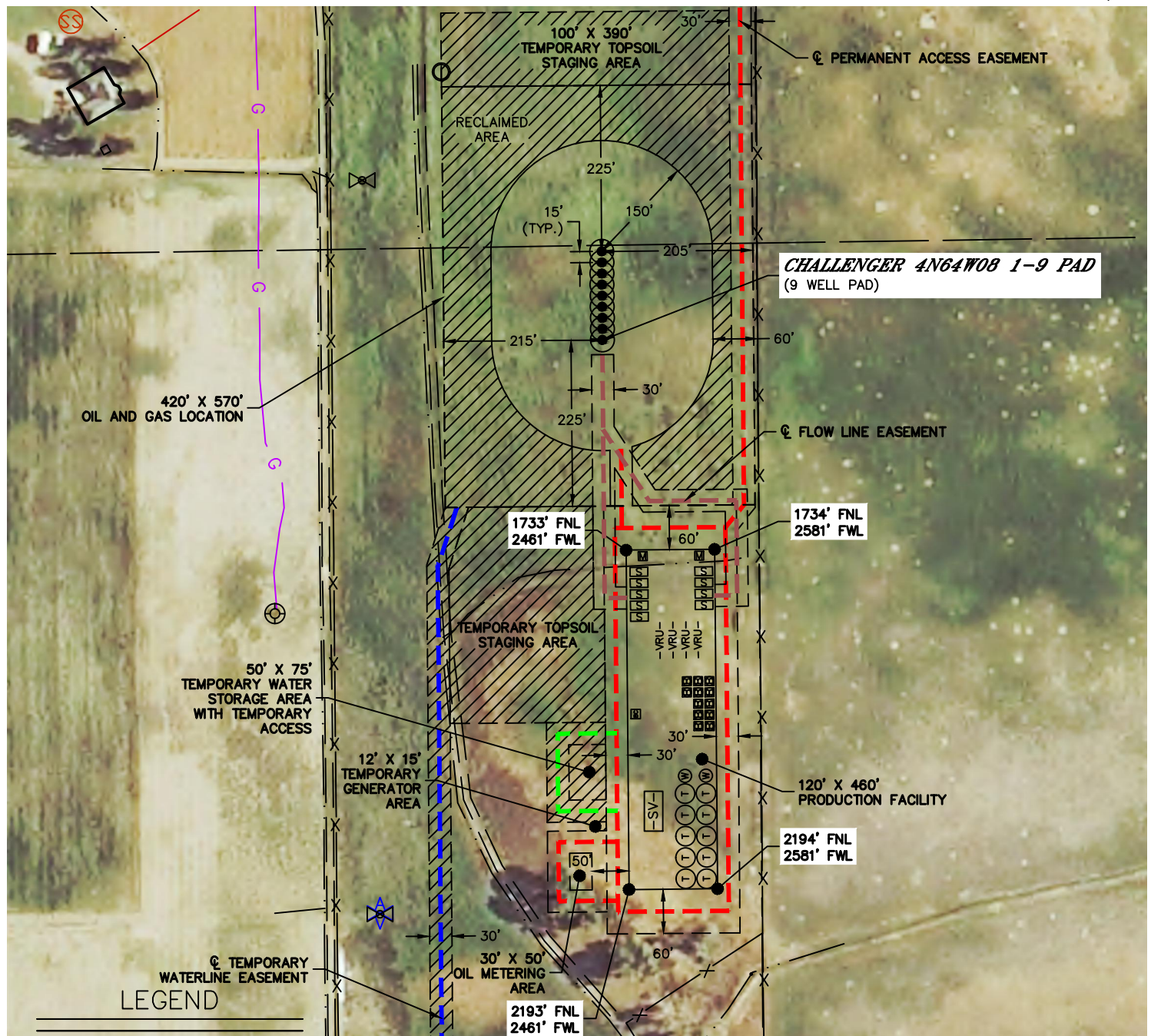


Lat40°, Inc. 6250 W. 10th Street, Unit 2, Greeley, CO 970-515-5294

PROPOSED SCALED FACILITY DRAWING

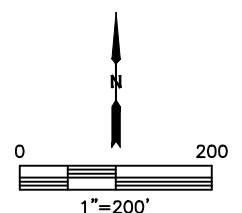
CHALLENGER 4N64W08 1-9 PAD

SECTION: 8
TOWNSHIP: 4N
RANGE: 64W
6TH. P.M.
WELD COUNTY, CO



- PROPOSED WELL HEAD
- ⊙ TANK BATTERY
- ⊙ WATER TANK
- ⊙ WATER VAULT
- ⊙ SEPARATOR
- ⊙ TWO PHASE UPRIGHT SEPARATOR
- ⊙ ECD
- ⊙ METER
- VRU- VAPOR RECOVERY UNIT
- ⊙ TEMPORARY GENERATOR
- SV- SURGE VESSEL
- OM- OIL METERING

TOTAL DISTURBED AREA OF LOCATION: ±12.4 ACRES
TOTAL SIZE OF LOCATION AFTER RECLAMATION: ±6.7 ACRES



DATE: 11/12/2018
PROJECT#: 2016123