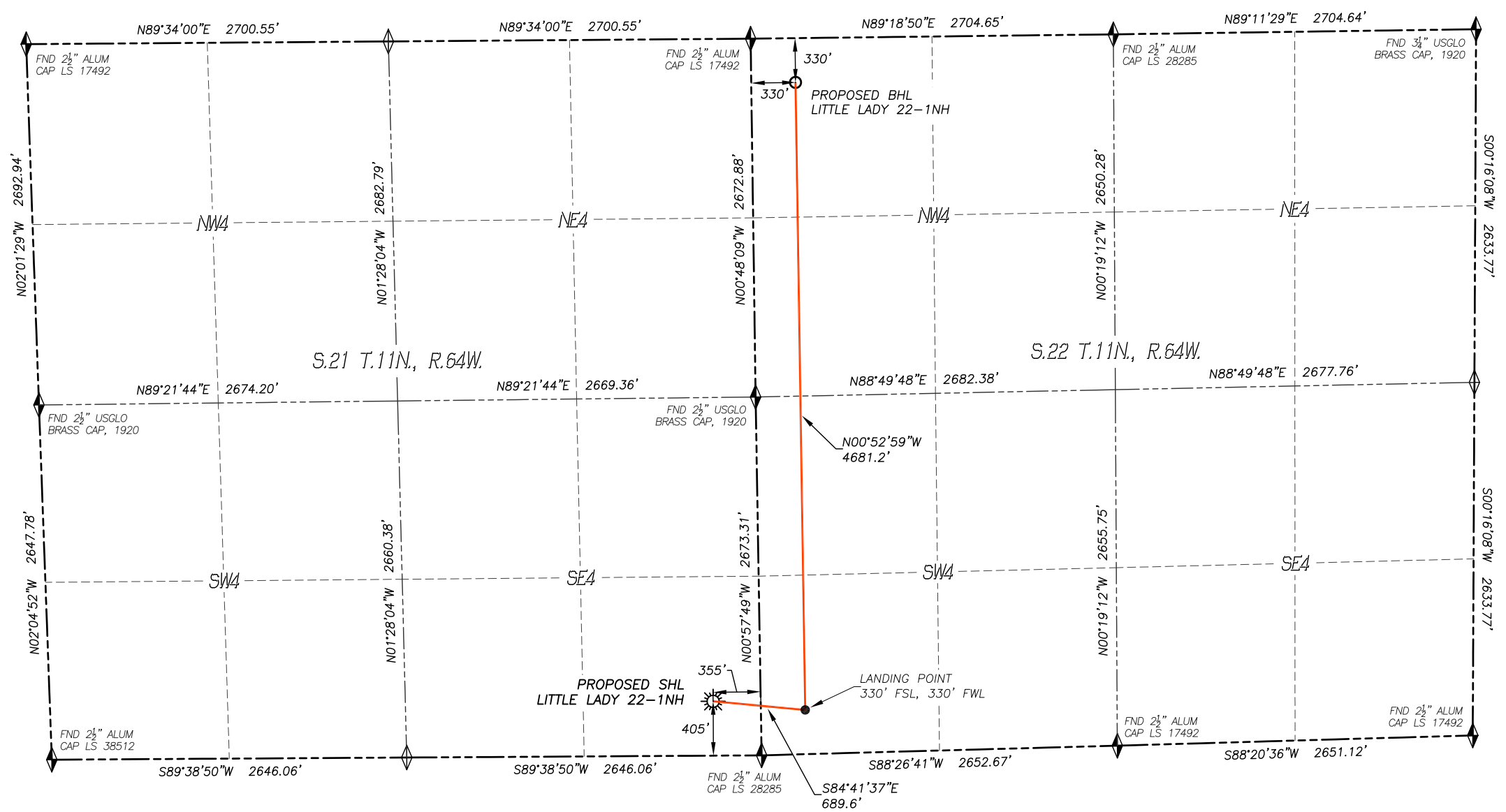


WELL LOCATION CERTIFICATE
LITTLE LADY 22-1NH
SECTION 21, TOWNSHIP 11 NORTH, RANGE 64 WEST OF THE 6TH P.M.



IN ACCORDANCE WITH A REQUEST FROM UPLAND EXPLORATION INC., DALEY LAND SURVEYING, INC. HAS DETERMINED THE SURFACE LOCATION OF THE LITTLE LADY 22-1NH WELL TO BE 405' FSL, 355' FEL, AS MEASURED AT NINETY (90) DEGREES FROM THE SECTION LINES OF SECTION 21, TOWNSHIP 11 NORTH, RANGE 64 WEST, AND THE BOTTOM HOLE LOCATION TO BE 330' FNL, 330' FWL, AS MEASURED AT NINETY (90) DEGREES FROM THE SECTION LINES OF SECTION 22, TOWNSHIP 11 NORTH, RANGE 64 WEST, OF THE 6TH PRINCIPAL MERIDIAN, WELD COUNTY, COLORADO.

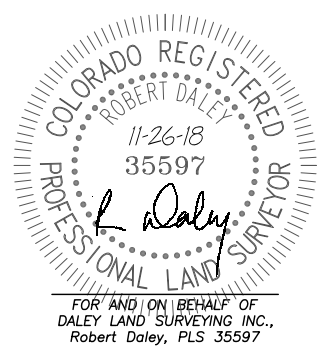
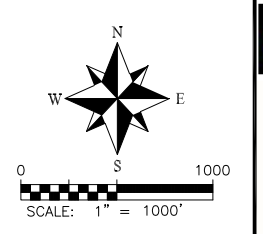
I HEREBY STATE THAT THIS WELL LOCATION CERTIFICATE WAS PREPARED BY ME OR UNDER MY DIRECT SUPERVISION, THAT THE WORK WAS COMPLETED ON 11/13/2018 FOR AND ON BEHALF OF UPLAND EXPLORATION INC., AND THAT THIS MAP DOES NOT REPRESENT A BOUNDARY SURVEY, IT IS NOT A LAND SURVEY PLAT OR AN IMPROVEMENT SURVEY PLAT AND IT IS NOT TO BE RELIED UPON FOR THE ESTABLISHMENT OF FENCE, BUILDING OR OTHER FUTURE IMPROVEMENT LINES.

- NOTES:**
- BEARINGS FOR THIS MAP ARE ASSUMED AND BASED UPON GPS OBSERVATIONS MADE BETWEEN MONUMENTS LOCATED AT THE EAST QUARTER CORNER AND SOUTHEAST CORNER OF SECTION 21, T.11N., R.64W.
 - HORIZONTAL DATUM IS NAD83.
 - VERTICAL DATUM IS NAVD88 AND ORIGINATES FROM THE LOCAL C.O.R.S. NETWORK, UTILIZING THE GEOID12A MODEL.
 - SEE LOCATION DRAWING FOR VISIBLE IMPROVEMENTS WITHIN 500' OF PROPOSED DISTURBED AREA.
 - SURFACE USE: PASTURE/RANGELAND.
 - INST. OPERATOR: KYLE DALEY

NEAREST CULTURAL ITEMS:	
BUILDING:	4151'± NW
BUILDING UNIT:	4105'± NW
HIGH OCC. BLD. UNIT:	5280'±
DES. OUTSIDE ACTIVITY AREA:	5280'±
PUBLIC ROAD:	542'± SE
ABOVE GROUND UTILITY:	4157'± NW
RAILROAD:	5280'±
PROPERTY LINE:	355'± E

NAD 83 LATITUDE AND LONGITUDE	
SURFACE LOCATION:	
LATITUDE:	N40.90006°
LONGITUDE:	W104.54285°
ELEV.:	5380'
PDOP.:	1.3
QTR/QTR:	SE4/SE4
LANDING POINT:	
LATITUDE:	N40.89986°
LONGITUDE:	W104.54037°
BOTTOM HOLE:	
LATITUDE:	N40.91271°
LONGITUDE:	W104.54044°

- LEGEND**
- FOUND MONUMENT AS DESCRIBED
 - CALCULATED POSITION
 - PROPOSED WELL
 - EXISTING WELL
 - BOTTOM HOLE



UPLAND EXPLORATION

DALEY LAND SURVEYING, INC.
PARKER, COLORADO
303.953.9841