

WELL LOCATION DATA:
 LATITUDE: 40.39042°N
 LONGITUDE: 104.68251°W
 ELEVATION: 4674'
 PDOP: 1.5
 OPERATOR: C HOLMES
 SURFACE USE: INDUSTRIAL

NOTES:

1. DISTANCES ARE MEASURED PERPENDICULAR TO NEAREST SECTION LINE AND ARE SHOWN ON THE SAME SIDE OF THE SECTION LINE WHERE THE WELL IS LOCATED.
2. THIS MAP DOES NOT REPRESENT A MONUMENTED BOUNDARY SURVEY. SIXTEENTH CORNER LOCATIONS ARE COMPUTED, UNLESS OTHERWISE NOTED.
3. BOTTOM HOLE LOCATIONS AND HORIZONTAL COMPLETION ZONE PROVIDED BY OTHERS.

BASIS OF BEARING:

THE NORTH LINE OF THE NORTHEAST QUARTER OF SECTION 20-T5N-R65W BEARS N89°44'34"E BETWEEN THE NORTH QUARTER CORNER OF SECTION 20 MONUMENTED WITH 3 1/4" A.C. IN R.B STAMPED "PLS 36053" AND THE NORTHEAST CORNER OF SECTION 20 MONUMENTED WITH A 3 1/4" A.C. IN R.B STAMPED "LS 34990" BASED ON THE COLORADO NORTH 0501 STATE PLANE COORDINATE SYSTEM.

ELEVATIONS ARE BASED ON NAVD 88, AS OBSERVED FROM GPS OBSERVATIONS

LEGEND

- ALIQUOT CORNER A.C. ALUMINUM CAP
- ⊕ BOTTOM HOLE R.B. RANGE BOX
- ⊙ PROPOSED WELL

LAND SURVEYOR'S CERTIFICATION

LAMP, RYNEARSON & ASSOCIATES, INC., OF FT. COLLINS, COLORADO HAS, IN ACCORDANCE WITH A REQUEST FROM TROY OWENS AT EXTRACTION, DETERMINED THE SURFACE LOCATION OF THE WELL DESIGNATED AS GP JACKSON FED 17W-25-8N TO BE 526' FROM THE NORTH LINE AND 1305' FROM THE EAST LINE OF SECTION 20, TOWNSHIP 5 NORTH, RANGE 65 WEST OF THE 6TH P.M., WELD COUNTY, COLORADO.



0 1000
 SCALE: 1"= 1000'
 U.S. SURVEY FEET

LAINE A. LANDAU
 COLORADO PLS 31159
 DATE OF SURVEY: 8/19/2010 (SECTION CONTROL)
 DATE OF SURVEY: 7/31/2014 (WELL LOCATION)



LAMP RYNEARSON
 & ASSOCIATES

4715 Innovation Drive 970.226.0342 | P
 Fort Collins, CO 80525 970.226.0879 | F
 www.LRA-inc.com

PROPOSED WELL LOCATION EXHIBIT
 GP JACKSON FED 17W-25-8N
 1 OF 4

DRAWN BY
 JMC
 PATH/FILENAME

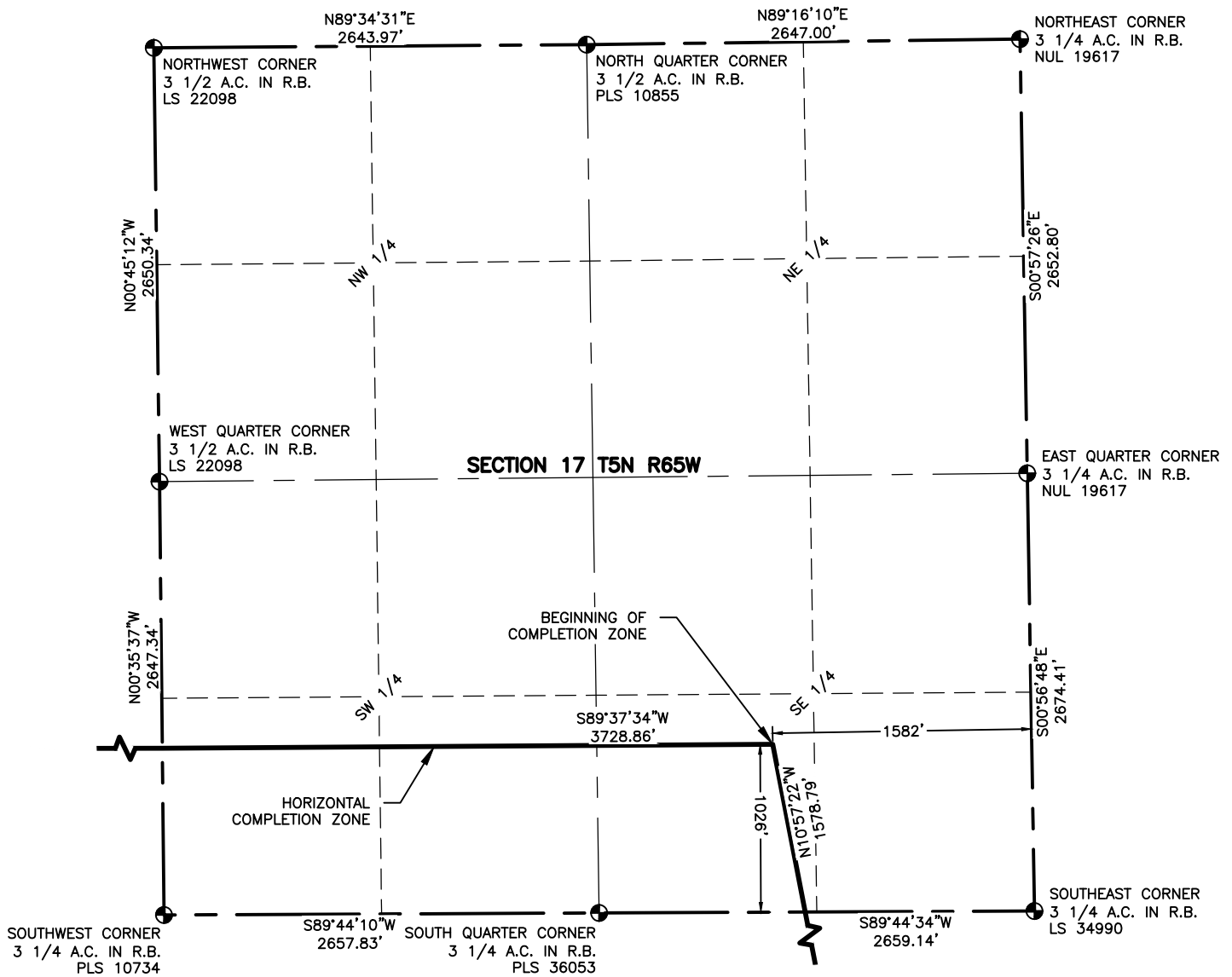
DATE
 4/9/2018

COGCC ID
 332837

PROJECT - TASK NUMBER
 0213001.01
 I:\engineering\0218001.01 xog - greeley directional gp

BOOK AND PAGE
 MR01/MR02

SURFACE - LOCATION
 NE/4,NE/4, SEC20, T5N, R65W

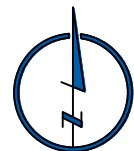


NOTES:

- DISTANCES ARE MEASURED PERPENDICULAR TO NEAREST SECTION LINE AND ARE SHOWN ON THE SAME SIDE OF THE SECTION LINE WHERE THE WELL IS LOCATED.
- THIS MAP DOES NOT REPRESENT A MONUMENTED BOUNDARY SURVEY.
- SIXTEENTH CORNER LOCATIONS ARE COMPUTED, UNLESS OTHERWISE NOTED.

LEGEND

- ALIQUOT CORNER
- BOTTOM HOLE
- A.C. ALUMINUM CAP
- R.B. RANGE BOX



SCALE: 1"= 1000'
U.S. SURVEY FEET

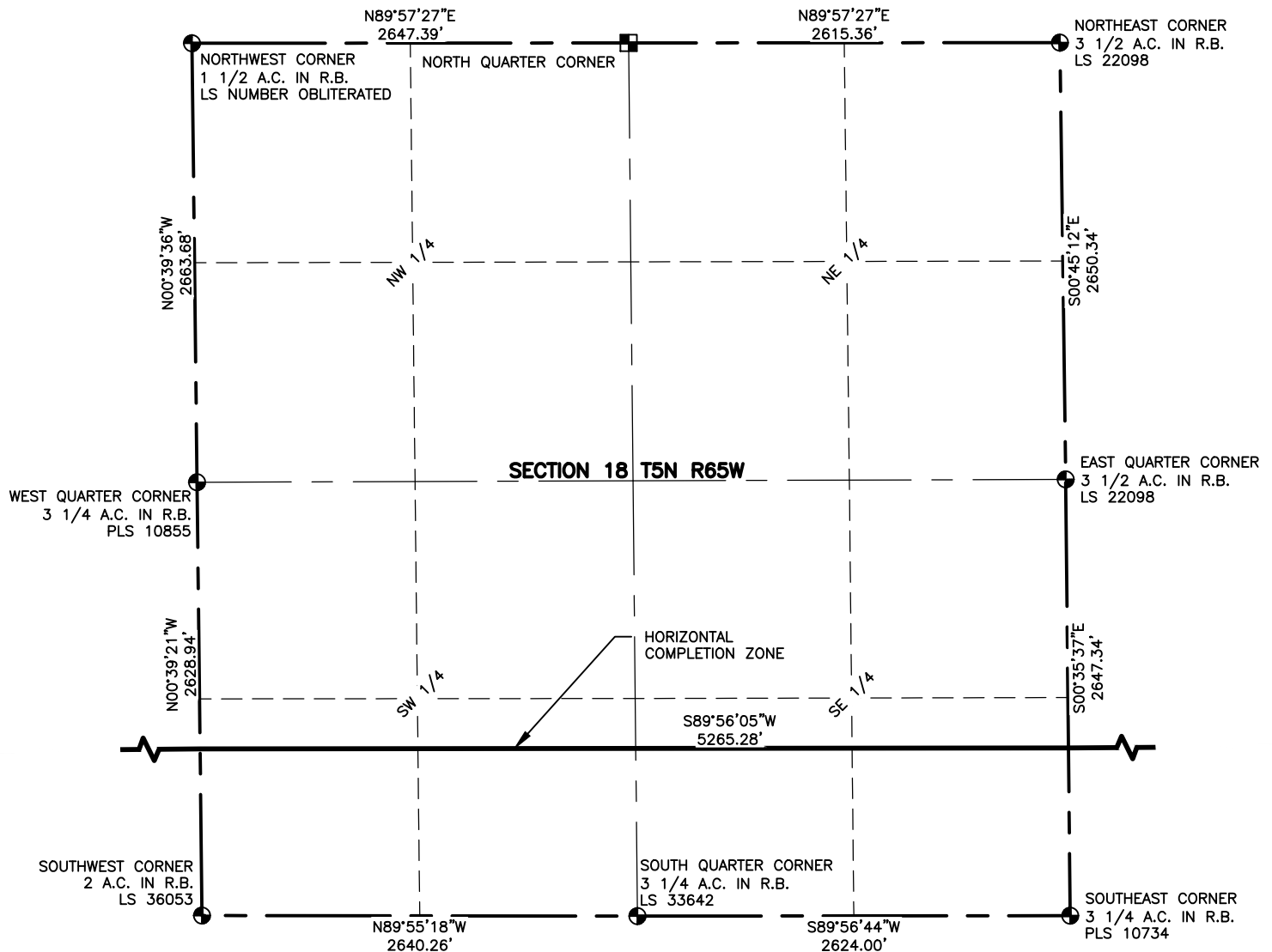


LAMP RYNEARSON
& ASSOCIATES

4715 Innovation Drive 970.226.0342 | P
Fort Collins, CO 80525 970.226.0879 | F
www.LRA-inc.com

PROPOSED WELL LOCATION EXHIBIT
GP JACKSON FED 17W-25-8N
2 OF 4

DRAWN BY	DATE	COGCC ID	PROJECT - TASK NUMBER	BOOK AND PAGE	SURFACE - LOCATION
JMC	4/9/2018	332837	0213001.01	MR01/MR02	NE/4,NE/4, SEC20, T5N, R65W
PATH/FILENAME	I:\engineering\0218001.01 xog - greeley directional gp				
(I:\SURVEY\DRAWINGS\EXHIBITS\0211010 - GALEY\MR01-2B.dwg)					

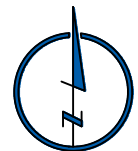


NOTES:

- DISTANCES ARE MEASURED PERPENDICULAR TO NEAREST SECTION LINE AND ARE SHOWN ON THE SAME SIDE OF THE SECTION LINE WHERE THE WELL IS LOCATED.
- THIS MAP DOES NOT REPRESENT A MONUMENTED BOUNDARY SURVEY.
- SIXTEENTH CORNER LOCATIONS ARE COMPUTED, UNLESS OTHERWISE NOTED.

LEGEND

- ALIQUOT CORNER
- ⊙ BOTTOM HOLE
- ⊠ COMPUTED ALIQUOT CORNER FROM GLO RECORDS
- A.C. ALUMINUM CAP
- R.B. RANGE BOX



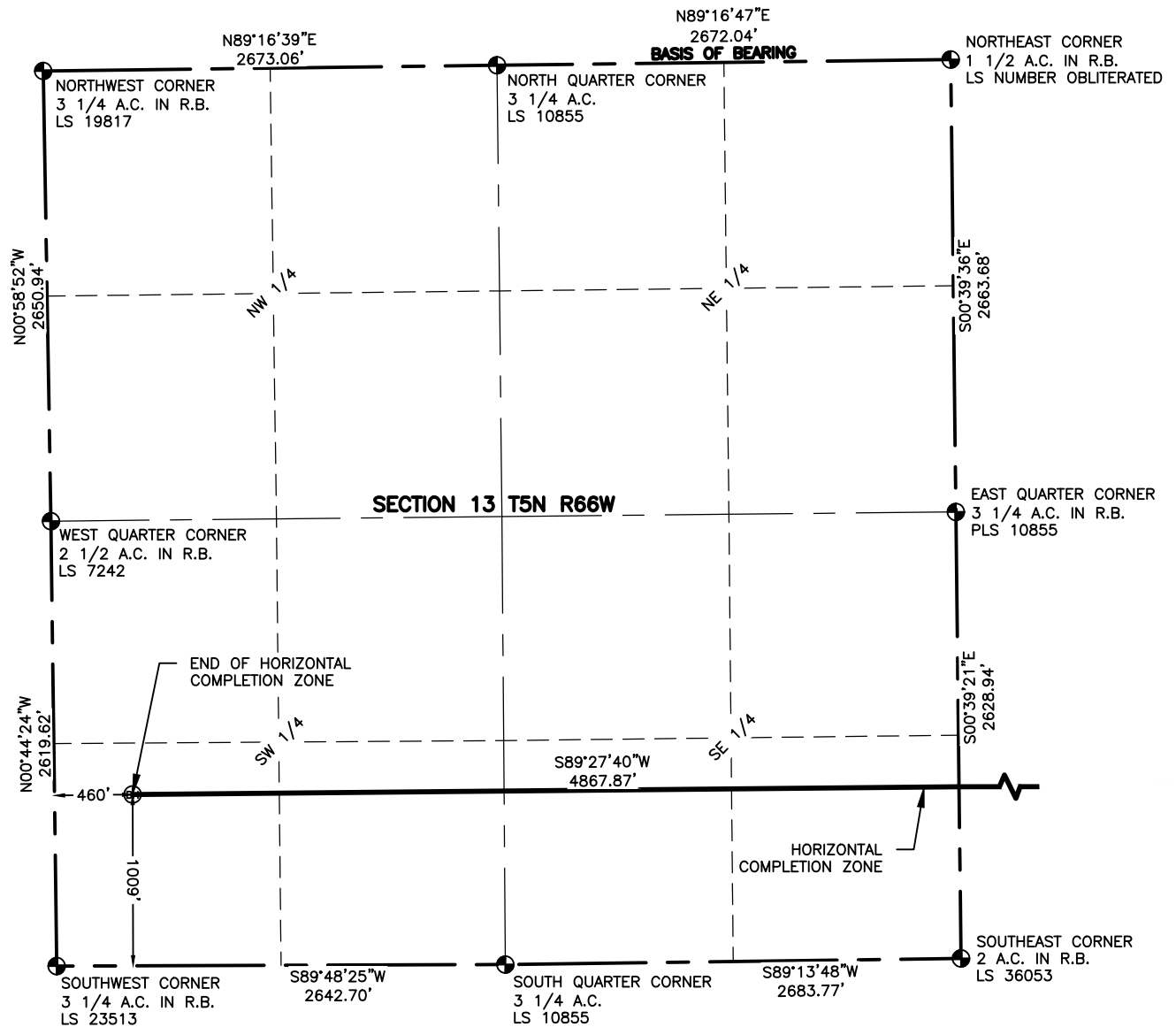
SCALE: 1" = 1000'
U.S. SURVEY FEET



4715 Innovation Drive 970.226.0342 | P
Fort Collins, CO 80525 970.226.0879 | F
www.LRA-inc.com

PROPOSED WELL LOCATION EXHIBIT
GP JACKSON FED 17W-25-8N
3 OF 4

DRAWN BY	DATE	COGCC ID	PROJECT - TASK NUMBER	BOOK AND PAGE	SURFACE - LOCATION
JMC	4/9/2018	332837	0213001.01	MR01/MR02	NE/4,NE/4, SEC20, T5N, R65W
PATH/FILENAME	I:\engineering\0218001.01 xog - greeley directional gp				

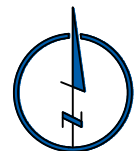


NOTES:

1. DISTANCES ARE MEASURED PERPENDICULAR TO NEAREST SECTION LINE AND ARE SHOWN ON THE SAME SIDE OF THE SECTION LINE WHERE THE WELL IS LOCATED.
2. THIS MAP DOES NOT REPRESENT A MONUMENTED BOUNDARY SURVEY. SIXTEENTH CORNER LOCATIONS ARE COMPUTED, UNLESS OTHERWISE NOTED.
3. BOTTOM HOLE LOCATIONS AND HORIZONTAL COMPLETION ZONE PROVIDED BY OTHERS.

LEGEND

- ALIQUOT CORNER
- ⊙ BOTTOM HOLE
- A.C. ALUMINUM CAP
- R.B. RANGE BOX



0 1000

SCALE: 1"= 1000'
U.S. SURVEY FEET



LAMP RYNEARSON
& ASSOCIATES

4715 Innovation Drive 970.226.0342 | P
Fort Collins, CO 80525 970.226.0879 | F
www.LRA-inc.com

PROPOSED WELL LOCATION EXHIBIT
GP JACKSON FED 17W-25-8N
4 OF 4

DRAWN BY
JMC
PATH/FILENAME

DATE
4/9/2018

COGCC ID
332837

PROJECT - TASK NUMBER
0213001.01
I:\engineering\0218001.01 xog - greeley directional gp

BOOK AND PAGE
MR01/MR02

SURFACE - LOCATION
NE/4,NE/4, SEC20, T5N, R65W